



Guangzhou Xunbao Electronics Technology CO.,LTD



Product Brochure



Scan to visit official website

Guangzhou Xunbao Eletronics Technology CO.,LTD

Building A2, No.18 Jingsan Road, High-tech Industrial Park, East Zone,
Zengjiang Street, Zengcheng, Guangzhou, China

+86-020-32030616

+86-020-82399635

sales@syble.cn

<http://www.syble.cn/>

**Professional Barcode Scanner
Manufacturer**

<http://www.syble.cn/>

Company Profile



Guangzhou XunBao Electronics Technology Co., Ltd. which located in Guangzhou. It is a high-tech enterprise that specializes in R&D, manufacturing, supplying and service of automatic identification products. We have a professional technical team engaged in hardware design, software development and system integration, as well as a management group with innovative spirits and abundant work experience.



Providing quality guaranteed products with reasonable prices is what we dedicated to, and keep you surprising. After introduction of handheld barcode scanners, omnidirectional barcode scanners and wireless barcode scanners, laser barcode scanners big investment have been made to develop new data collector, which possesses functions such as 1D and 2D barcode collecting, RFID reading, computer and 3G mobile phone is all in one. We have achieved very high recognition in various markets.

Our products are widely used in industry, commerce, taxation, national defense, transportation, finance, health care and postal sectors.

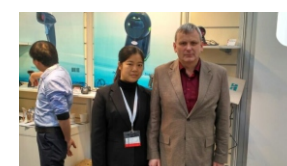
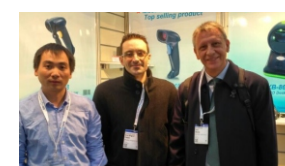
Over the years we adhere to the "quality first, credit first, customer first, integrity-based" operating principles of market development. In the coming years, Syble will be a world-class professional barcode scanning equipments manufacturer.

Customer profile



Exhibitions Syble Participated

2019 EuroCIS Germany



2019 COMPUTEX TAIPEI



2019 GITEX DUBAI



2D Desktop Scanner

AK-9808



NEW



- Supports most 1D and QR/PDF 2D barcodes
- Image Sensor: SXGA-W(Width1280*high1024)
- Scan Range: 10mm-400mm
- Supports USB, RS232, USB-COM
- Size:152mm(L)*87mm(W)*152mm(H)

AK-9208



NEW



- Supports most 1D and QR/PDF 2D barcodes
- Excellent motion tolerance and IR trigger
- Scan Range: 10mm-250mm
- Supports USB, RS232, USB-COM
- Size: 80.4mm(L)*58.4mm(W)*152mm(H)

XB-8808G



NEW



- Image Sensor: SXGA-W(Width1280*high1024)
- Supports most 1D and QR/PDF 2D barcodes
- Excellent motion tolerance and IR trigger
- Supports USB, RS232, USB-COM
- Size:152mm(L)*80mm(W)*152mm(H)

XB-PS80



NEW



- Supports most 1D and QR/PDF 2D barcodes
- Excellent motion tolerance and IR trigger
- Support Multi-Language keyboard
- Supports USB, RS232, USB-COM
- Size:118mm(L)*95mm(W)*144.4mm(H)

AK-9608



NEW



- Supports most 1D and QR/PDF 2D barcodes
- Excellent motion tolerance and IR trigger
- Motion tolerance: 3.8meters/second
- Supports USB, RS232, USB-COM
- Size:124mm(L)*83.6mm(W)*158mm(H)

XB-8208



NEW



- Supports most 1D and QR/PDF 2D barcodes
- Image Sensor: 630 LED illumination red light
- Scanning Accuracy: 4mil
- Supports USB, RS232, USB-COM
- Size: 80.4mm(L)*58.4mm(W)*152mm(H)

XB-8808



- Supports most 1D and QR/PDF 2D barcodes
- Excellent motion tolerance and IR trigger
- Motion tolerance: 3.8meters/second
- Supports USB, RS232, USB-COM
- Size:152mm(L)*80mm(W)*152mm(H)

XB-PS60



NEW



- Supports most 1D and QR/PDF 2D barcodes
- Image Sensor: SXGA-W(Width1280*high1024)
- Scanning Accuracy: Code 39 4mil
- Supports USB, RS232, USB-COM
- Size:146.4mm(L)*95mm(W)*124.8mm(H)

2D Desktop Scanner

XB-8608G



NEW



- Support payment code such as wechat,Alipay etc
- Motion tolerance: 3meters/second
- Supports USB, RS232, USB-COM
- Field of View: Horizontal: 46.1°; Vertical: 30.4°
- Size:96mm(L)*108mm(W)*150mm(H)

XB-8206G



- Supports most 1D and QR/PDF 2D barcodes
- Optical System: 640H*480V pixels(Wide VGA)
- Scan Depth: 0-160mm
- Supports USB, RS232, USB-COM
- Size:75mm(L)*71mm(W)*145mm(H)

XB-8807



NEW

- Supports most 1D and QR/PDF 2D barcodes
- Scan Mode: Automatic inductive scanning
- Supports USB, RS232, USB-COM
- Size:150mm(L)*76mm(W)*155mm(H)



1D Desktop Scanner

XB-3120



- Supports 1D barcodes
- 20 lines laser
- Supports USB-HID, USB-COM, PS2, RS232
- Size: 152mm(L)*87mm(W)*159mm(H)

XB-3080



- Supports 1D barcodes
- 20 lines laser
- Supports USB-HID, USB-COM, PS2, RS232
- Size: 96mm(L)*108mm(W)*151mm(H)

2D Bluetooth Barcode Scanner

XB-6221RB



- Light Sources: 617nm LED Aimer, White LED
- Supports most 1D and 2D barcodes
- Resolution: 640*480
- Precision: $\geq 5\text{mil}$
- Size: 79.7mm(L)*69mm(W)*155mm(H)

XB-6221BT



- Supports most 1D and 2D barcodes
- Dedicated bluetooth receiving base
- Scan Type: Image CMOS
- Precision: 1D $\geq 5\text{mil}$; 2D $\geq 10\text{mil}$
- Size: 86.6mm(L)*137mm(W)*169mm(H)

XB-6208RB



- Inventory mode can max store 3500 barcoder(EAN13)
- Supports most 1D and 2D barcodes
- Offline feature allow users operate it without area restrict
- Size: 102mm(L)*71mm(W)*177mm(H)

XB-6266MBT



- Supports most 1D and 2D barcodes
- Dedicated bluetooth receiving base
- Up to 100m wireless distance(Open air)
- Precision: $\geq 5\text{mil}$
- Size: 85mm(L)*62mm(W)*154mm(H)

XB-S80RB



- Inventory mode can max store 3500 barcoder(EAN13)
- Supports most 1D and 2D barcodes
- Precision: $\geq 5\text{mil}$
- Size: 65mm(L)*65mm(W)*200mm(H)

XB-S80BT



- Supports most 1D and 2D barcodes
- Dedicated bluetooth receiving base
- Scan Type: Image CMOS
- Size: 86.5mm(L)*137mm(W)*168mm(H)

2D Barcode Scanner

XB-6221



- Decode barcodes display on tablets and smart phones
- Depth of field: 6-250mm
- Size: 79.7mm(L)*69mm(W)*155mm(H)

XB-S80



- Supports most 1D and 2D barcodes
- Reliable and high stable decoding performance
- Plug and play, simple setup, fast use
- Size: 66mm(L)*65mm(W)*200mm(H)

2D Barcode Scanner

XB-6208



- Supports most 1D and 2D barcodes
- Excellent screen barcode reading
- Plug and play, simple setup, fast use
- Size: 102mm(L)*71mm(W)*177mm(H)

XB-6255M



- Supports most 1D and 2D barcodes
- D ecode barcodes display on tablets and smart phones
- Depth of field: 6-250mm
- Size: 83mm(L)*70mm(W)*172mm(H)

XB-6277



- Supports most 1D and 2D barcodes
- Long range scanning
- High density scanning
- Size: 102mm(L)*71mm(W)*177mm(H)

XB-6266M



- Support smost 1D and 2D barcodes
- Reliable and high stable decoding performance
- Plug and play, simple setup, fast use
- Size: 83mm(L)*70mm(W)*172mm(H)

1D Laser Barcode Scanner

XB-2021



- Supports 1D barcode
- Durable construction
- Interface: USB-HID, USB-COM, PS2, RS232
- Size: 69.2mm mm(L)*79.7mm(W)*178.3mm(H)

XB-2055



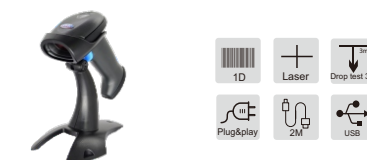
- Supports 1D barcode
- Durable construction
- Interface: USB-HID, USB-COM, PS2, RS232
- Size: 83mm(L)*70mm(W)*172mm(H)

XB-2058



- Supports 1D barcode
- Durable construction
- Interface: USB-HID, USB-COM, PS2, RS232
- Size: 69.2mm mm(L)*79.7mm(W)*178.3mm(H)

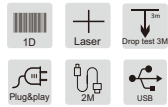
XB-2108



- Supports 1D barcode
- High density scanning
- Interface: USB-HID, USB-COM, PS2, RS232
- Size: 102mm(L)*71mm(W)*177mm(H)

1D Laser Barcode Scanner

XB-2178



- Supports 1D barcode
- High density scanning
- Interface: USB-HID, USB-COM, PS2, RS232
- Size: 102.5mm(L)*71mm(W)*177mm(H)

XB-S20



- Supports 1D barcode
- Depth of field: 20-280mm(0.33mm, PCS90%)
- Interface: USB-HID, USB-COM, PS2, RS232
- Size: 200mm(L)*66mm(W)*65mm(H)

1D Wireless Laser Barcode scanner

XB-5021R



- New decoding chip, Supports 1D barcode
- High reliable, long-lasting battery life
- Depth of field: 20-280mm(0.33mm, PCS90%)
- Size: 79.7mm(L)*69mm(W)*155mm(H)

XB-5055R



- New decoding chip, Supports 1D barcode
- High reliable, long-lasting battery life
- 2.4G, up to 50-80m wireless distance(Open air)
- Size: 83mm(L)*70mm(W)*172mm(H)

XB-5066R



- New decoding chip, Supports 1D barcode
- High reliable, long-lasting battery life
- 2.4G, up to 50-80m wireless distance(Open air)
- Size: 85mm(L)*62mm(W)*154mm(H)

XB-5108R



- New decoding chip, Supports 1D barcode
- 433 Mhz working frequency, 300m wireless distance (open air)
- Size: 102mm(L)*71mm(W)*154mm(H)

XB-5066BT



- New decoding chip, Supports 1D barcode
- Up to 100 meters wireless distance(open air)
- Via Bluetooth 4.0 BLE and 2.4G communication
- Size: 85mm(L)*62mm(W)*145mm(H)

XB-5066RT



- New decoding chip, Supports 1D barcode
- High reliable, long-lasting battery life
- 2.4G, up to 50-80m wireless distance(Open air)
- Size: 85mm(L)*62mm(W)*154mm(H)

1D Image Barcode Scanner

XB-915



- Supports 1D barcode
- Scan Speed: ≥ 200 times/s
- Compact and light weight design
- Image Resolution: 1500 pixels
- Size: 83mm(L)*70mm(W)*172mm(H)

XB-917



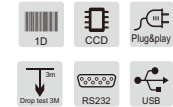
- Supports 1D barcode
- Long Range Scanning
- Scan Speed: ≥ 270 times/s
- Image Resolution: 2500 pixels
- Size: 102mm(L)*71mm(W)*177mm(H)

XB-S60



- Supports 1D barcode
- Professional bluetooth receiver base
- Image Resolution: 2500 pixels
- Dual-mode Wireless Scanner
- Scan Depth: 20-330mm(0.33mm, PCS90%)
- Size: 200mm(L)*66mm(W)*65mm(H)

XB-9158



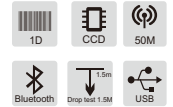
- Supports 1D barcode
- Long Range Scanning
- Precision: 4mil
- Image Resolution: 1500 pixels
- Size: 83mm(L)*70mm(W)*172mm(H)

XB-918RB



- Supports 1D barcode
- Image Resolution: 1500 pixels
- Storage capacity is 512000 characters
- Up to 30-50m wireless distance(Open air)
- Size: 102mm(L)*71mm(W)*177mm(H)

XB-S60RB



- Supports 1D barcode
- Professional bluetooth receiver base
- Precision: ≥ 3 mil(1mil)
- Image Resolution: 2500 pixels
- Dual-mode Wireless Scanner
- Size: 200mm(L)*66mm(W)*65mm(H)

XB-918BT



- Supports 1D barcode
- Professional bluetooth receiver base
- Image Resolution: 1500 pixels
- Dual-mode Wireless Scanner
- Scan Depth: EAN13 20-280mm(0.33mm)
- Size: 85mm(L)*62mm(W)*154mm(H)



1D/2D Fixed scanner

XB-7100



- Supports 1D barcode
- Precision: 4mil(0.1mm)
- Scan fine barcode, fast and accurate
- Size: 52mm(L)*56.5mm(W)*25mm(H)

XB-7126



- Support smost 1D and 2D barcode
- Easy integration with decoder board
- 3mil(Code 39), 7.5mil(Data Matrix), 4mil(PDF 417)
- Size: 52mm(L)*56.5mm(W)*25mm(H)



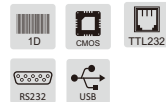
XB-7120



- Supports most 1D and 2D barcode
- Precision: ≥5mil
- Easy integration with decoder board
- Size: 52mm(L)*56.5mm(W)*25mm(H)

1D/2D Image Module

XB-D1500



- 1500 pixels resolution
- Scan Speed: ≥200time/s
- Easy integration with decoder board
- Size: 22.8mm(L)*10.8mm(W)*30.5mm(H)

XB-S200



- Sensor: 617 LED Aimer, White LED
- Depth of field: 60-220mm
- 2D imager with small footprint
- Size: 28mm(L)*11.8mm(W)*12mm(H)

XB-S500



- Sensor: Red LED 625nm±10nm
- Image Sensor: 640 x 480 CMOS
- 2D imager with small footprint
- Size: 21mm(L)*8mm(W)*9.3mm(H); Mainboard: 21*21mm



XB-D2500



- 2500 pixels resolution
- Scan Speed: ≥270time/s
- Easy integration with decoder board
- Size: 22mm(L)*12.5mm(W)*25.6mm(H)

XB-S300



- Sensor: 617 LED Aimer, White LED
- Precision: ≥5mil
- Easy integration with decoder board
- Size: 26mm(L)*15.3mm(W)*14mm(H)

2D Embedded scanner

XB-M4



- Image Sensor: SXGA-W(Width1280*high1024)
- Scan Range: 10mm-400mm
- Supports USB, RS232, USB-COM
- Size: 148mm(L)*140mm(W)*77mm(H)

XB-M2



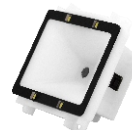
- Image Sensor: SXGA-W(Width1280*high1024)
- Scan Range: 10mm-250mm
- Supports USB, RS232, USB-COM
- Size: 91mm(L)*80.5mm(W)*36mm(H)

XB-7706



- Supports most 1D and QR 2D barcodes
- Motion tolerance:3.8m/s
- Supports USB, Rs232, USB-COM
- Size:115mm(L)*115mm(W)*80.5mm(H)

XB-76M7



- Special for self-service cashier
- Scan Type: Image CMOS
- Supports USBHID, RS232, USB-COM
- Size: 61mm(L)*64mm(W)*30mm(H)

XB-M3



- Image Sensor: SXGA-W(Width1280*high1024)
- Scan Range: 10mm-250mm
- Supports USB, RS232, USB-COM
- Size: 115mm(L)*94mm(W)*48mm(H)

XB-M1



- Image Sensor: SXGA-W(Width1280*high1024)
- Scan Range: 10mm-230mm
- Supports USB, USB-COM
- Size: 86mm in diameter

XB-7705



- Supports most 1D and 2D barcodes
- Compact size and easy integration
- Supports USB, RS232, USB-COM
- Size:78.3mm(L)*67.3mm(W)*52.6mm(H)

XB-76M6



- Image Sensor: 630 LED Aimer,White LED
- Precision: ≥5mil
- Supports USBHID, RS232, USB-COM
- Size: 61mm(L)*64mm(W)*30mm(H)

1D/2D Healthcare & Payment

HC-80



NEW



- Supports most 1D and QR/PDF 2D barcodes
- Excellent motion tolerance and IR trigger
- Support Multi-Language keyboard
- Supports USB, RS232, USB-COM
- Size: 118mm(L)*95mm(W)*144.4mm(H)

HC-70RB



NEW



- Light Sources: 617nm LED Aimer, White LED
- Supports most 1D and 2D barcodes
- Precision: $\geq 5\text{mil}$
- Storage capacity is 512000 characters
- Size: 102mm(L)*71mm(W)*177mm(H)

HC-20



NEW

- Light Sources: 617nm Red visible LED
- 2500 pixels CCD Image Sensor
- Scan Speed: ≥ 270 times/sec
- Scan Depth: 20-330mm(0.33mm, PCS90%)
- Size: 102mm(L)*71mm(W)*177mm(H)



HC-76



NEW



- Sensor: White LED lighting light
- Pixel: 640 x 480
- Scan Type: Image CMOS
- Scanning Accuracy: $\geq 10\text{mil}$
- Size: 135mm(L)*95mm(W)*95mm(H)

HC-70

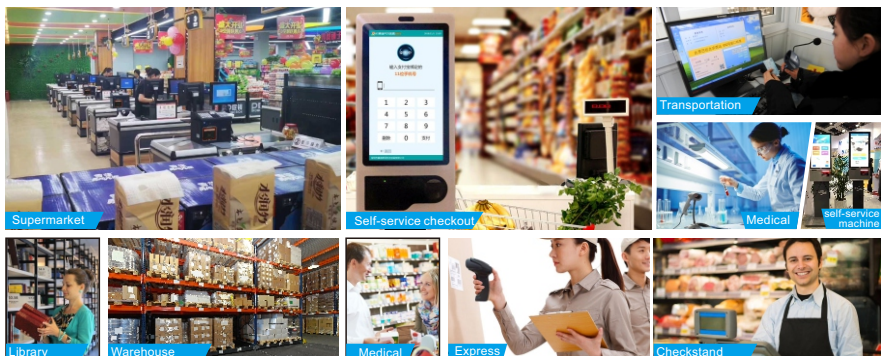


NEW



- Light Sources: Red LED 625nm $\pm 10\text{nm}$
- Supports most 1D and 2D barcodes
- Motion Tolerance: 2.5meter/sec
- Precision: $\geq 3\text{mil}$
- Size: 102mm(L)*71mm(W)*177mm(H)

Application



TEST SAMPLES

Test Samples 1D



0.10mm



0.127mm



0.18mm



0.20mm



0.25mm



6CM WINE WINDOW



8CM WINE WINDOW

Test Samples 2D



QR (30 Digit)



QR (100 Digit)



PDF-417(30 Digit)