

IMPORTANT! KEEP THIS MANUAL FOR FUTURE REFERENCE

**INSTRUCTION MANUAL
FOR USE OF CHILD RESTRAINT SYSTEM
„TECHNO”**

**CAR SEAT
TECHNO**



This child restraint system **chipolino** is designed and manufactured in compliance with the requirements of Regulation 44 of the United Nations Economic Commission for Europe concerning the safe transportation of children, the provisions of the Product safety Directive 2001/95/EU of the European Parliament and The Council as well as the Consumer Protection Law of Bulgarian Legislation.

NOTICE

For universal child restraint , groups 0+, I , II and III

1. This is a "UNIVERSAL" CHILD RESTRAINT. It is approved to Regulation No 44, 04 series of amendments, for general use in vehicles and it will fit most, but not all, car seats.
 2. A correct fit is likely if the vehicle manufacturer has declared in the vehicle handbook that the vehicle is capable of accepting a "universal" child restraint for these age groups.
 3. This child restraint has been classified as "universal" under more stringent conditions than those which applied to earlier designs which do not carry this notice.
- If in doubt, consult either the child restraint manufacturer or the retailer.

NOTICE

for semi-universal child restraint, groups 0+ and I

1. This is an ISOFIX CHILD RESTRAINT. It is approved to Regulation No 44, 04 series of amendments, for general use in vehicles fitted with ISOFIX anchorages systems.
 2. It will fit vehicles with positions approved as ISOFIX positions (as detailed in the vehicle handbook), depending on the category of the child seat and of the fixture.
- The mass group and the ISOFIX size class for which this device is intended is GROUP 0+ (0-13 kg), ISOFIX class D и GROUP I (9-18kg), ISOFIX class D.

NOTICE

for semi-universal child restraint groups 0+, I , II и III

This child restraint is classified Semi-universal use and is suitable for fixing into the seat positions of the following car:

<u>CAR</u>	<u>CAR</u>	<u>REAR</u>	
Refer to Vehicle list		<u>Outer</u>	<u>Centre</u>
	Yes	Yes	No

Seat positions in other cars may also be suitable to accept this child restraint. If in doubt, consult either the child restraint manufacturer or the retailer.



**DO NOT FORGET THAT NO RESTRAINT SYSTEM CAN PROVIDE ABSOLUTE PROTECTION IN CASE OF A CRASH OR ROAD ACCIDENT!
DRIVE WITH CARE WHEN THERE IS A CHILD IN YOUR VEHICLE!**

IN ORDER TO ENSURE THE SAFETY OF YOUR CHILD, FOLLOW EXACTLY THE INSTRUCTIONS AND SAFETY RECOMMENDATIONS IN THIS MANUAL!

MISUSE OF THE CAR SEAT WILL CONTRIBUTE TO REDUCING ITS SECURITY AND SAFETY FEATURES! FAILURE OF THE GUIDELINES OF THIS INSTRUCTION INCREASES THE RISK OF SERIOUS INJURY OR DEATH!

CAUTION!

NEVER INSTALL THE CAR SEAT IN FORWARD FACING POSITION BEFORE THE CHILD'S WEIGHT EXCEEDS 9 kg!



It is prohibited to place the car seat in a vehicle with a two-point seat belt. Place the car seat **ONLY** in a vehicle with a 3-point seat safety belt .

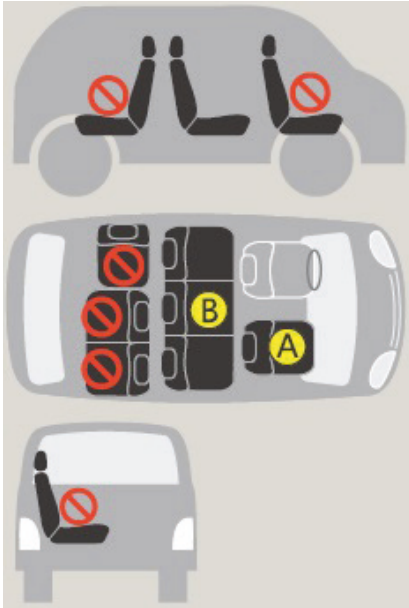
CAUTION! The child restraint is suitable for use in vehicles, equipped with approved LAP/3-POINT/STATIC/WITH RETRACTOR SAFETY BELTS in compliance with ECE R16.


 AIRBAG		
		


Do not place the restraint system on a vehicle seat equipped with air bag! This may result in death or serious injury!


Review the instructions of the vehicle for information about airbags and conditions of transportation of children.

PLACE OF THE CAR SEAT IN THE VEHICLE



 Do not install the car seat on that seat in the vehicle.

 "REARWARD FACING" installation of the car seat is not recommended on a seat equipped with air bag, which cannot be deactivated. Only use with 3-point seat belt and airbag off or position of the vehicle seat as far back as possible so the car seat to be away from the air bag.

 You can install car seat only if the vehicle seat is equipped with 3-point safety belt.

The rear outside seats are the most safety position of the vehicle for child under 12 years old. Install the car seat on vehicle seat " FORWARD FACING". Do not install on side facing or rearward facing vehicle seat. If any doubt about installation, please check your vehicle user manual, or contact the vehicle supplier.

Child restraint TECHNO

Group	Method of installation in the vehicle	Approved type of system
0+ and I "Rearward facing"	3-point safety vehicle belt	Universal
	ISOFIX attachment+ top tether	Semi-universal ISOFIX
I "Forward facing"	3-point safety vehicle belt	Universal
II and III	3-point safety vehicle belt	Universal
II and III	3-point safety vehicle belt + additional fixing	Semi-universal



Rearward facing

G 0+ I

Newborn

0-18 kg

approx from
birth to 4 years



Forward facing

G I

Infant

9-18 kg

approx from
9 months to
4 years old



G II

Toddler

15-25 kg

approx from
3 to 6 years old



G III

Kid

22-36 kg

approx from
5 to 12 years old

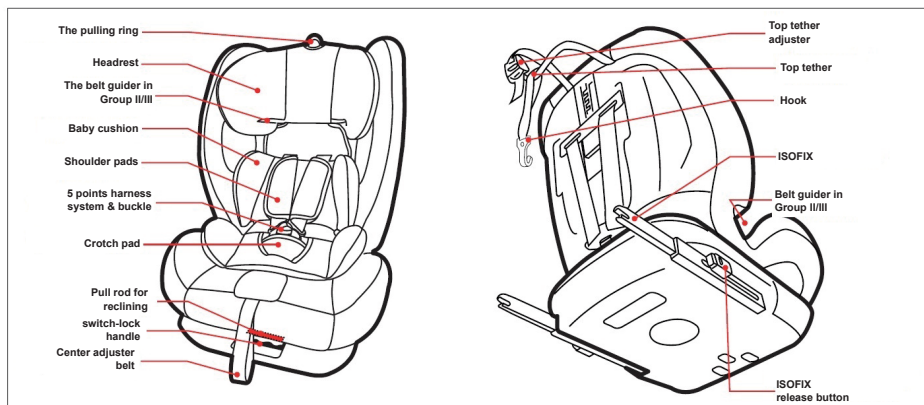


- ❖ **CAUTION! NEVER LEAVE YOUR CHILD UNATTENDED!**
- ❖ **CAUTION! DO NOT USE ANCHOR POINTS OTHER THAN THE ONES DESCRIBED IN THIS MANUAL AND MARKED ON THE RESTRAINT SYSTEM.**
- ❖ **CAUTION! NEVER INSTALL THE CHILD RESTRAINT IN THE DIRECTION OF VEHICLE MOVEMENT AND FACING FORWARD BEFORE THE CHILD WEIGHT REACHES 9kg!**
- ❖ **CAUTION! THE CAR SEAT SAFETY MUST BE PROPERLY ADJUSTED ACCORDING TO CHILD'S HEIGHT, NOT TWISTED AND SNUG WELL AGAINST BABY'S BODY.**
- ❖ **CAUTION! THIS CHILD RESTRAINT SHOULD NOT BE MODIFIED OR ADAPTED WITH NEW FITTINGS, WITHOUT PREVIOUS AUTHORIZATION BY THE COMPETENT AUTHORITY.**
- ❖ **CAUTION! KEEP AWAY FROM FIRE!**
- ❖ Installation in the vehicle and securing the child in the car seat to be done only by adult!
- ❖ The hard parts and the parts of the child restraint made of plastic should be located and installed so that when the vehicle is in normal use, they can not be trapped by a sliding seat or in a door of the vehicle.
- ❖ Do not allow the safety belts of the car seat and the vehicle to be twisted, frayed or torn, latches and locks (buckles) must be always in good order and firmly fixed.
- ❖ If you find uncertainty or defect in the structure, latches, straps or locking mechanisms of the car seat or ISOFIX attachments, discontinue usage until removal of the damaged parts and replacement with new ones.
- ❖ After a violent impact the car seat and belts may be damaged. therefore, it is recommended to replace the car seat with new one.
- ❖ Never use a second hand child restraint. it may have suffered structural damage, which may make the child restraint extremely dangerous.
- ❖ Do not use this car seat without its seat cover and do not replace it with a new one, unless supplied by the manufacturer. The fabric parts are integral parts of the restraint system and its safety features!
- ❖ Always make sure that you are not carrying any unsecured objects, especially on the back shelf, which, in case of an accident, may injure the car's occupants
- ❖ Do not put additional pads except the ones supplied from the manufacturer! Placing additional pads may obscure the safety of your child.
- ❖ Do not use spare parts and other components not supplied by the manufacturer. The manufacturer assumes no responsibility for safety in the event that are used spare parts other than original.
- ❖ It is recommended to cover the car seat if the vehicle is parked under strong sun shine – extreme sun exposure will make the plastic to deteriorate and the fabric to fade. Please, check that the child restraint has not become too hot before placing your child seat.
- ❖ The child car seat does not replace the child's cot or bed. When a child needs a sleep, you have to place him in a suitable baby stroller, baby crib or bed.
- ❖ Do not attach objects with long cords or strings on the car seat in order to avoid danger of suffocation!
- ❖ Never place a child seat on beds, couches or similar soft surfaces!
- ❖ Do not allow children to play with the product!
- ❖ Do not remove stickers and warnings – they contain important information!
- ❖ The packaging of the product must be kept out of the reach of children at the time of and after unpacking in order to avoid the risk of strangulation!

PRODUCT FEATURES

- ❖ **Child restraint restraint while traveling in a vehicle designed for children weighing from 0 to 36 kg, classified in weight groups:**
 - **0+ (0-13 kg):** universal and semi-universal integral ISOFIX child restraint, ISOFIX class D. The restraint system is installed in direction opposite to the direction of the vehicle and the child is "rearward facing";
 - **I (9-18kg):** universal and semi-universal integral ISOFIX child restraint, ISOFIX class D. The restraint system is installed in direction opposite to the direction of the vehicle and the child is "rearward facing" or in the direction of the vehicle and the child is "facing forward";
 - **II (15-25kg):** universal and semi-universal non-integral system for securing children. The restraint system is installed in the direction of the vehicle and the child is "facing forward";
 - **III (22-36kg):** universal and semi-universal non-integral system for securing children. The restraint system is installed in the direction of the vehicle and the child is "facing forward";
- ❖ ISOFIX attachments to vehicle (for groups 0+ and I);
- ❖ Possibility for additional fixing of the car seat groups II and III with ISOFIX connectors;
- ❖ Top tether (only for groups 0+ and I, "REARWARD FACING" car seat);
- ❖ The restraint rotates 360° on the base;
- ❖ Backrest recline;
- ❖ Head rest height adjustment;
- ❖ 5-point safety harness on the restraint;
- ❖ Additional soft pads;

MAIN PARTS DIAGRAM



INSTRUCTIONS FOR USE

IMPORTANT!

- Follow exactly the instructions and sequence of installation steps and use of the product described in the text and figures of this manual.
- Check the security of fixing after each operation!
- **ALWAYS CHECK THE SECURITY OF FIXING OF THE SAFETY BELTS!**
- After each installation make sure that the seat belts are not twisted and are in the correct position

INSTALLATION OF CAR SEAT GROUP 0+ AND GROUP I

For groups 0+ and I you can install the car seat on vehicle seat with 3-point safety belt of the vehicle or with ISOFIX connectors:

“REARWARD FACING” group 0+ and I



ISOFIX+top tether



3- point safety belt of the vehicle

“FORWARD FACING” group I



3- point safety belt of the vehicle



3- point safety belt of the vehicle

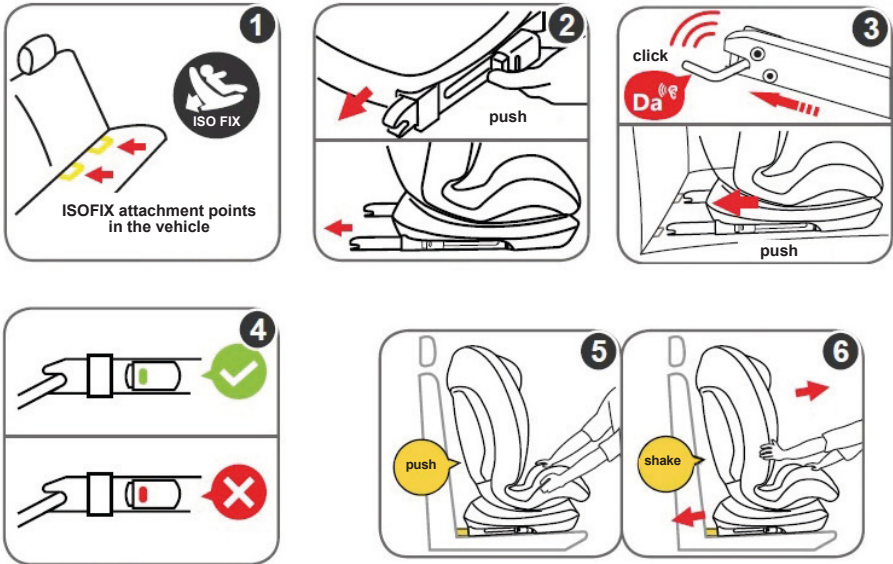


At ISOFIX attachment, there are three anchor points - two ISOFIX connectors and top tether.



For groups II and III the car seat is installed with ISOFIX + 3-point safety belt of the vehicle or only with 3 – point safety belt of the vehicle. **DO NOT USE THE TOP TETHER!**

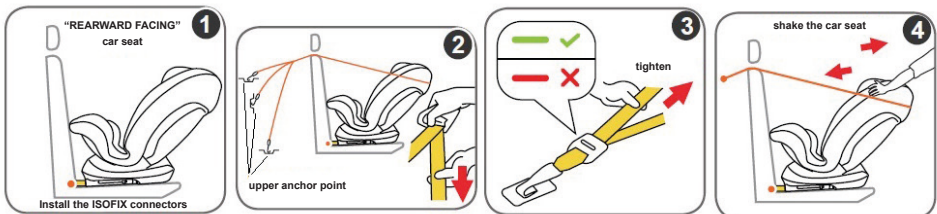
INSTALLATION OF THE CAR SEAT WITH ISOFIX CONNECTORS



IMPORTANT! When the ISOFIX connectors are fixed the indicators must show „green color” (4)! That is confirmation for correct fixing of the car seat.

CAUTION! After installation make sure that the car seat is firmly and securely secured to the vehicle seat (5 and 6). If the seat shakes or the ISOFIX connectors are removed, repeat steps 1 to 4 to reinstall the seat.

INSTALLATION OF THE CAR SEAT WITH ISOFIX AND TOP TETHER



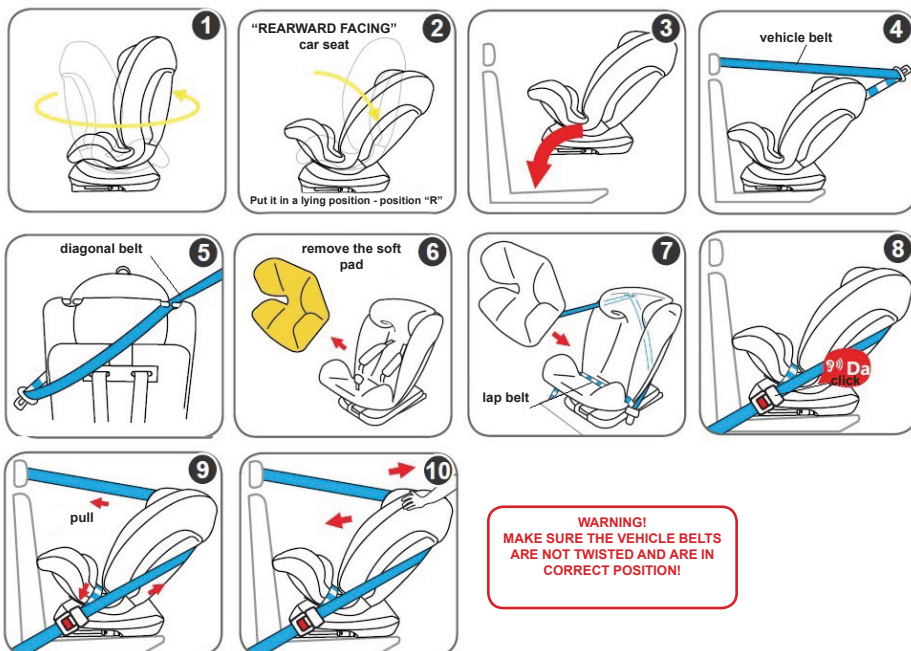
Note: The upper anchor point is fixed device on the trunk or the floor of the vehicle.

IMPORTANT! Tighten the belt of the top tether, until the indicator of top tether adjuster show „green color” (3) If the indicator does not show green, reinstall.

CAUTION! After installation make sure the car seat is firmly and securely secured (4).

INSTALLATION OF THE CAR SEAT groups 0+ and I WITH 3-POINT SAFETY BELT OF THE VEHICLE (“REARWARD FACING”)

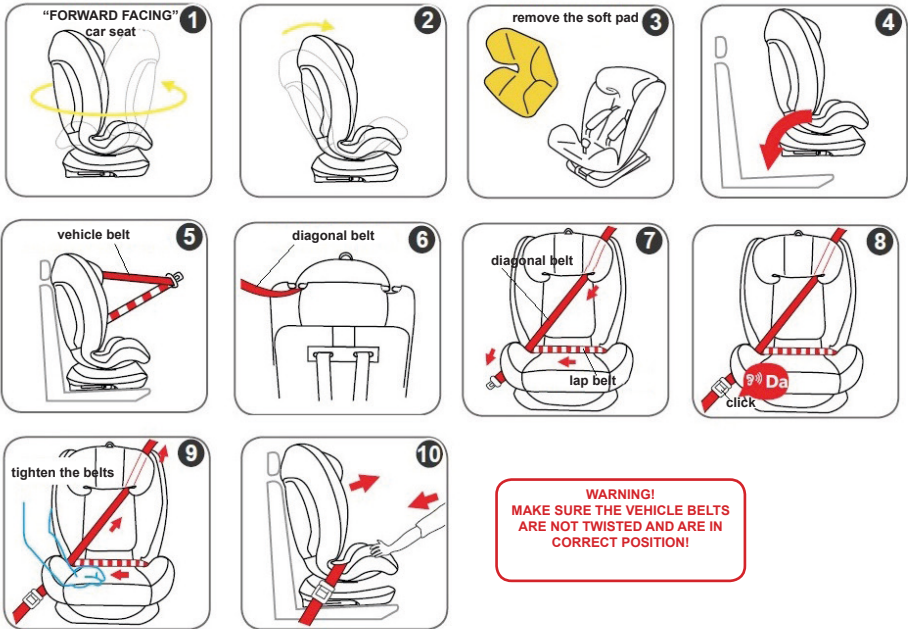
CAUTION! Place the car seat in the vehicle “REARWARD FACING”! (1)



IMPORTANT! Make sure the vehicle belts are tightened and the car seat is well fixed to the vehicle seat.

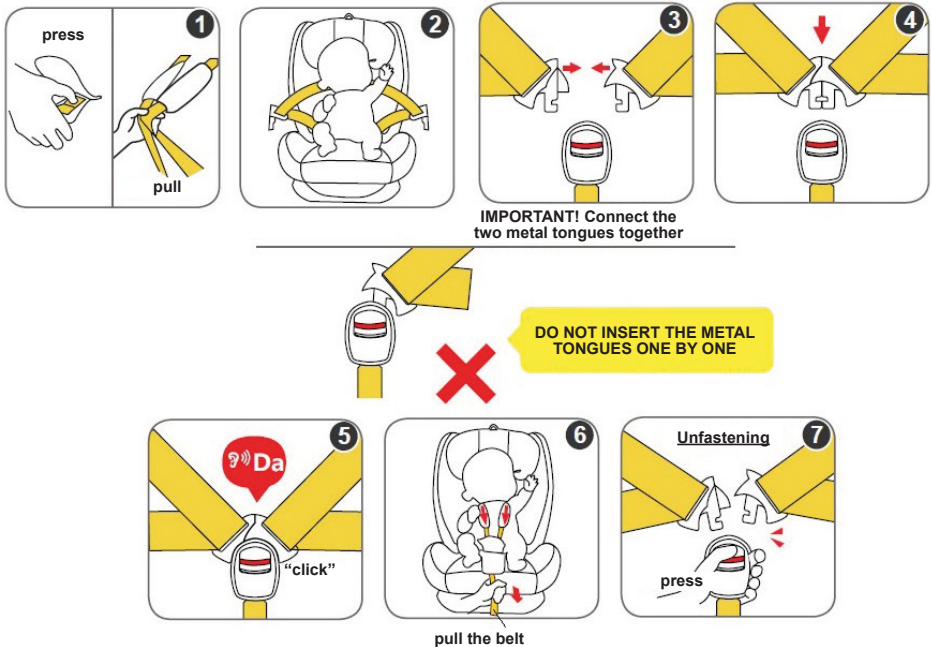
INSTALLATION OF THE CAR SEAT group I WITH 3-POINT SAFETY BELT OF THE VEHICLE ("FORWARD FACING")

CAUTION! Place the car seat in the vehicle **"FORWARD FACING"**! (1)



IMPORTANT! Make sure the vehicle belts are tightened and the car seat is well fixed to the vehicle seat.

5-POINT HARNESS OF THE CAR SEAT. USE FOR GROUPS 0+ and I



After placing the child in the car seat and fastening the belt, pull the adjusting strap to secure the belt (6). The seat belts should be adjusted according to the body and size of the child, snug well against baby's body and not loosened. The recommended distance between the belts and the body of the child should be about 3cm (or two fingers).

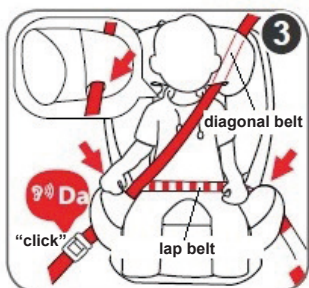
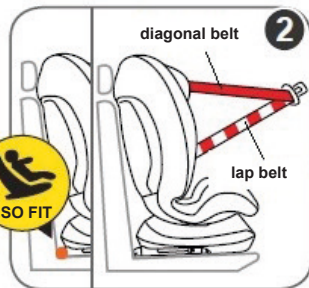
INSTALLATION OF THE CAR SEAT GROUP II AND GROUP III

CAUTION! IN GROUP II AND III, THE SEAT IS FITTED TO THE VEHICLE SEAT WITH THE 3-POINT BELT OF THE VEHICLE (DIAGONAL AND LAP). ISOFIX MOUNTING IS OPTIONAL AND CAN BE USED FOR ADDITIONAL ATTACHEMENT OF THE CAR SEAT TO THE VEHICLE SEAT!

CAUTION! When using ISOFIX installation with combination with 3-point safety belt of the vehicle, DO NOT PLACE THE TOP TETHER!

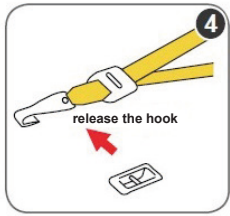
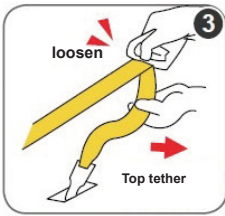
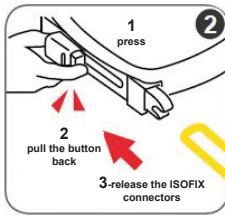
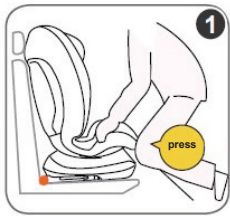
CAUTION! Only use position 1 for the seat recline!

IMPORTANT! The lap belt should cover the pelvis of the child, not the waist!



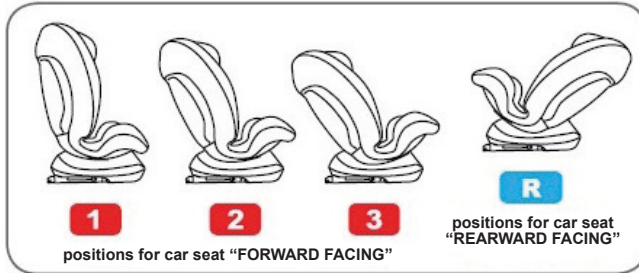
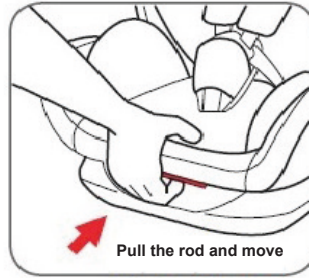
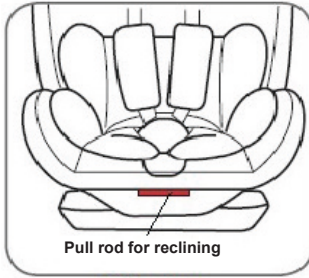
WARNING!
 MAKE SURE THE VEHICLE BELTS ARE
 NOT TWISTED AND ARE IN
 CORRECT POSITION!

UNLOCKING OF ISOFIX CONNECTORS AND TOP TETHER



CAUTION! Do not unlock or remove parts of the ISOFIX system applying strength! If the ISOFIX system is not unlocked, please repeat the steps shown in the figure

ADJUSTING THE RECLINE OF THE CAR SEAT

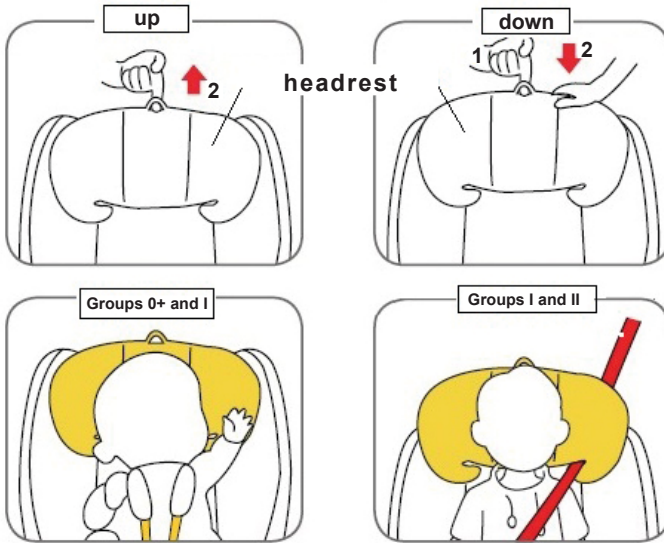


TIGHTENING AND LOOSENING OF 5-POINT HARNESS OF THE CAR SEAT

The recommended distance between the belts and the body of the child should be about 3cm (or two fingers).

<p>press button for adjusting</p> <p>LOOSENING</p> <p>TIGHTENING</p> <p>pull</p> <p>pull</p>	<p>LOOSENING</p> <p>Press the button for adjustment with one hand and with the other pull the shoulder belts.</p> <p>TIGHTENING</p> <p>Pull the adjustment strap and tighten, holding the shoulder straps with the other hand. Keep the recommended distance of about 3mm (two fingers) between the child's body and the shoulder straps!</p> <p>CAUTION! The belts should not be twisted!</p>
--	---

ADJUSTING THE HEIGHT OF THE HEADREST



IMPORTANT! Fix the headrest in suitable for your child position. Headrest should not be too high or too low to the child's head.

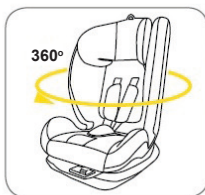
For groups **0 + and I** the slot for shoulder straps should higher than the child's shoulder!

For groups **II and III** the belts guide for groups II and III (of the head rest should be higher than the child's shoulder and the child's head must be well protected both sides of the headrest.

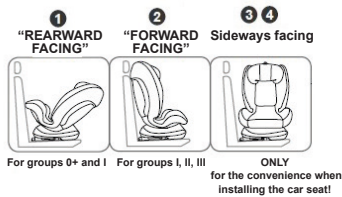
Notice: Loosen the pulling ring, to fix the chosen position.

ROTATION/CHANGE OF THE DIRECTION OF THE CAR SEAT

The seat of the car seat can be rotated at 360°. It can be fixed in two positions – 'FORWARD FACING' and "REARWARD FACING".



DO NOT USE THE CAR SEAT IF IT IS NOT FIXED IN THE CHOSEN POSITION!
ALWAYS CHECK BEFORE DRIVING!



ATTENTION!
DON'T USE THIS POSITION WHILE DRIVING!

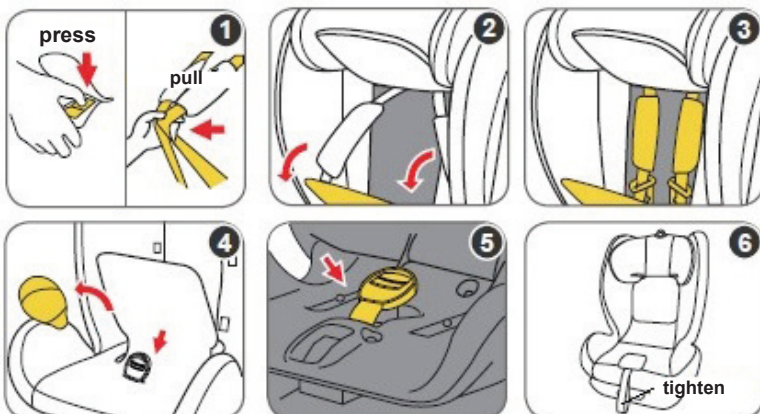


CAUTION! The seat is fixed only in position "REARWARD FACING" or in position "FORWARD FACING", when you hear click sound(3). Make sure the seat is fixed in the chosen position (4)!

STORING THE 5-POINT HARNESS OF THE CAR SEAT FOR groups II and III

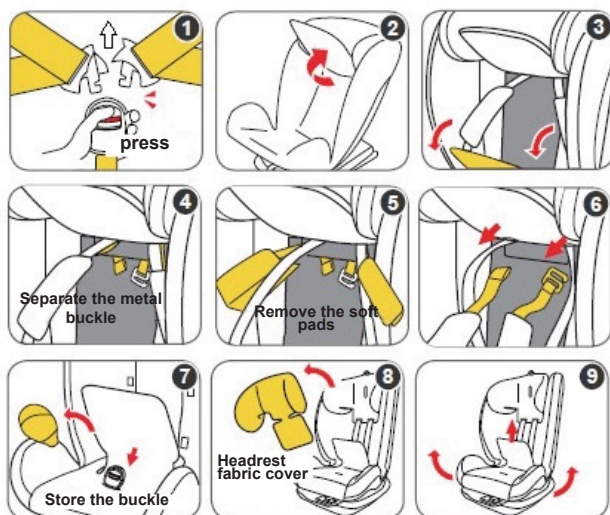


Unfasten the buckle of 5-point harness, fix the headrest in the highest position and lift the pad!
Follow the consequence of figure from 1 to 5 below:

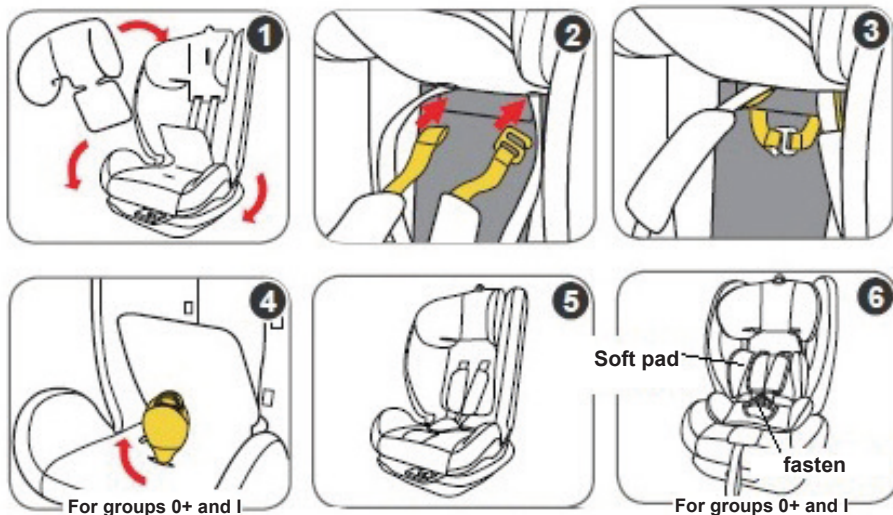


REMOVAL OF THE FABRIC COVER OF THE CAR SEAT

CAUTION! Do not use the car seat without its fabric cover!



PLACING THE FABRIC COVER



CARE AND MAINTENANCE

- ❖ Clean the fabrics, plastic parts and metal parts with damp cotton cloth or sponge and mild soap. Upholstery may be hand washed at 30°C using mild detergent!
- ❖ Do not bleach! Do not tumble dry! Do not machine wash! Do not iron!
- ❖ Do not use abrasive, bleach or other aggressive detergents.
- ❖ Always after cleaning leave the car seat fully dry and after that use it or store it.
- ❖ Harnesses must be cleaned with damp cloth and mild soap!
- ❖ Do not wet or remove the stickers. They contain important information!
- ❖ Always store your car seat indoors – on dry and clean place. Do not expose to direct environment influence - sun, rain, moisture and high temperature intervals.
- ❖ Please, contact your authorized dealer for problems connected with the use or repair.

Fabric:

Outer: 100% polyester

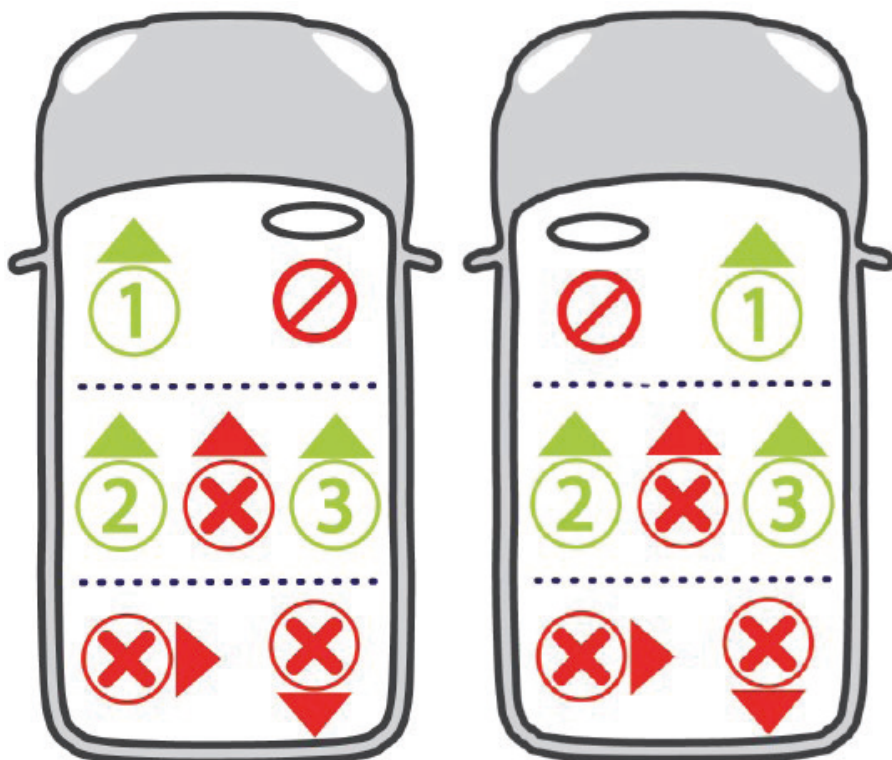
Filling: 100% polyester



Materials used: plastic, metal, textile

STKTH020xxx

List of vehicles, suitable for fixing of semi-universal child restraint system, model „TECHNO”



- Child restraint system model „TECHNO” **can be fitted** on the marked place in the vehicle.
- Child restraint system model „TECHNO” **CANNOT be fitted** on the marked place in the vehicle.

If your vehicle is not listed in this manual or it is not marked with ● or ○ , then please refer to your vehicle’s handbook or contact the manufacturer for further information.

Seat positions in other vehicles may also be suitable to accept the child restraint. If in doubt, consult either the child restraint manufacturer or the retailer.

	1	2	3
<u>Audi</u>			
A1 Sportback (2012)	○	●	●
A3 Hatch (2012)	○	●	●
A3 Limousine (2014)	○	●	●
A4L (2012 - 2015)	○	●	●
A4L (2016)	○	●	●
A6L (2011-2012)	○	●	●
A7 Sportback (2011)	○	●	●
A8L (2013)	○	●	●
Q3 (2013)	○	●	●
Q5 (2009 - 2012)	○	●	●
Q7 (2006 - 2015)	○	●	●
Q7 (2016)	○	●	●
<u>BMW</u>			
1 Series (2011)	○	●	●
2-Series Active (2016)	○	●	●
2-Series Coupe (2016)	○	●	●
3 Series F30 (2012)	○	●	●
5-GT (2010)	○	●	●
5 Series (2003 - 2010)	○	●	●
7 Series (2010)	○	●	●

	1	2	3
<u>BMW</u>			
7 Series (2016)	○	●	●
X1 (2009 - 2015)	○	●	●
X1 (2016)	○	●	●
X3 (2011)	○	●	●
BMW X4 (2014)	○	●	●
X5 (2007 - 2015)	○	●	●
BMW X5 (2016)	○	●	●
X6 (2009 - 2016)	○	●	●
BMW X6 (2016)	○	●	●
<u>BAIC</u>			
Senova D60 (2016)	○	●	●
Senova D70 (2013)	○	●	●
Senova X55 (2016)	○	●	●
Senova X65 (2016)	○	●	●
Shenbao D5 (2013)	○	●	●

	1	2	3
<u>BYD</u>			
S6 (SUV) (2013)	○	●	●
S7 (SUV) (2014)	○	●	●
Song PHEV (SUV) (2016)	○	●	●
Su-Rui (2012)	○	●	●
Su-Rui (2013)	○	●	●
Tang PHEV (SUV) (2016)	○	●	●
G6 (2012)	○	●	●
<u>Buick</u>			
Encore (2013)	○	●	●
Enclave (2013)	○	●	●
Excelle XT Hatchback (2012)	○	●	●
Excelle GT (2016)	○	●	●
Hatchback/GS (2016)	○	●	●
Lacrosse (2012)	○	●	●
Regal (2012)	○	●	●
Verano (2016)	○	●	●
<u>Besturn</u>			
B70 (2011)	○	●	●
B90 (2011)	○	●	●

	1	2	3
<u>Bentley</u>			
Continental Flying Spur (2013)	○	●	●
Continental GT (2012)	○	●	●
Mulsanne (2012)	○	●	●
<u>Cadillac</u>			
ATS (2016)	○	●	●
CTS Coupe (2013)	○	●	●
SRX (2012)	○	●	●
XTS (2013)	○	●	●
<u>Changan</u>			
CS15 (2016)	○	●	●
CS35 (2014)	○	●	●
CS75 (2014)	○	●	●
Eado XT (2014)	○	●	●
Raeton (2013)	○	●	●
V3 (2012)	○	●	●
V5 (2012)	○	●	●

	1	2	3
<u>Chery</u>			
Arrizo 5 (2015)	○	●	●
Arrizo 7 (2014)	○	●	●
E3 (2016)	○	●	●
E5 (2012)	○	●	●
EQ (2013)	○	●	●
3x (2016)	○	●	●
Tiggo 5 (2013 - 2015)	○	●	●
Tiggo 7 (SUV) (2017)	○	●	●
<u>Chevrolet</u>			
Malibu (2012)	○	●	●
Sail Saloon (2010)	○	●	●
Captiva (2012)	○	●	●
Cruze (2011)	○	●	●
<u>Chrysler</u>			
300C (2013)	○	●	●

	1	2	3
<u>Citroen</u>			
C-Elysee (2013)	○	●	●
C-Triumph (2010)	○	●	●
C-Quatre Saloon (2013)	○	●	●
C-Quatre Hatchback (2012)	○	●	●
C4 Sedan (2012)	○	●	●
C4 L (2013)	○	●	●
C5 (2012)	○	●	●
DS3 (2011)	○	●	●
DS4 (2011)	○	●	●
DS4 S (2016)	○	●	●
DS5 (2011)	○	●	●
<u>Dongfeng</u>			
H30 (2012)	○	●	●
S30 (2012)	○	●	●
MX6 SUV (2015)	○	●	●
S50 4dr (2015)	○	●	●
SX6 (SUV) (2016)	○	●	●
<u>EMGRAND</u>			
EC7 (2012 - 2015)	○	●	●
EC8 (2011 - 2015)	○	●	●

	1	2	3
<u>Englon</u>			
SC5(2012)	○	●	●
SC5 RV (2012)	○	●	●
<u>Everus</u>			
S1 (2012)	○	●	●
<u>Fiat</u>			
Viaggio (2012)	○	●	●
Ottimo (2015)	○	●	●
<u>Ford</u>			
Ecosport (2013)	○	●	●
Edge (2016)	○	●	●
I Escort 2016 Sedan (2016)	○	●	●
Explorer (2012)	○	●	●
Fiesta Saloon (2013)	○	●	●
Fiesta Sedan (2009 - 2013)	○	●	●
Fiesta Hatch (2009 - 2013)	○	●	●
Focus Sedan (2010 - 2012)	○	●	●
Focus Hatchback (2010 - 2011)	○	●	●
Focus Saloon (2011)	○	●	●
Focus Saloon (2012)	○	●	●
Kuga (2013)	○	●	●
Mondeo (2013)	○	●	●
Taurus (2016)	○	●	●

	1	2	3
<u>GAC Group</u>			
Trumpchi GA3 S Sedan (2017)	○	●	●
Trumpchi GA6 Sedan (2017)	○	●	●
Trumpchi GS4 (2016)	○	●	●
Trumpchi GS5 (2012)	○	●	●
Trumpchi GS8 (SUV) (2017)	○	●	●
<u>Geely</u>			
Borui GC7 (2016)	○	●	●
Boyue GX8 (2016)	○	●	●
Diaho (2016)	○	●	●
Diaho RS (2016)	○	●	●
EC7 (2015)	○	●	●
EC7-RV (2015)	○	●	●
GX7 (2015)	○	●	●
GX7+ (2016)	○	●	●
Yuanjing (2016)	○	●	●
<u>GLEAGLE</u>			
GC7 (2012)	○	●	●
GX7 (2012)	○	●	●
GC2 (PANDA) (2012)	○	●	●

	1	2	3
<u>Great Wall</u>			
C20R (2011)	○	●	●
C50 (2012)	○	●	●
M2 (SUV) (2010-2012)	○	●	●
M4 (SUV) (2012)	○	●	●
<u>Haima</u>			
FAMILY (2012)	○	●	●
HAPPIN (2010)	○	●	●
FREEMA (2012)	○	●	●
<u>Haval</u>			
2 (SUV) (2016)	○	●	●
2s (SUV) (2016)	○	●	●
6 (SUV) (2013)	○	●	●
6 Coupe (2016)	○	●	●
6 (SUV) (2017)	○	●	●
7 (SUV) (2016)	○	●	●
H1 (SUV) (2016)	○	●	●
H5 (SUV) (2011)	○	●	●
H6 (SUV) (2011)	○	●	●

	1	2	3
<u>Honda</u>			
Accord (2013)	○	●	●
Accord (2016)	○	●	●
Fit (2011)	○	●	●
City (2012)	○	●	●
Crider (2013)	○	●	●
Crosstour (2012)	○	●	●
Odyssey (2013)	○	●	●
Vezele (2016)	○	●	●
<u>Honda</u>			
Civic Saloon (2013)	○	●	●
CR-V (2012 - 2014)	○	●	●
CR-V (2015)	○	●	●
Greiz (2015)	○	●	●
Gienia (2017)	○	●	●
Jade (2013)	○	●	●
Spirior (2011 - 2015)	○	●	●
Spirior (2016)	○	●	●
UR-V (SUV) (2017)	○	●	●
XR-V (2016)	○	●	●

	1	2	3
<u>KIA</u>			
Carens (2013)	○	●	●
K5 (2012)	○	●	●
<u>Land Rover</u>			
Range Rover Sport (2013)	○	●	●
Discovery 4 (2013)	○	●	●
Discovery Sport (2015)	○	●	●
Freelander 2 (2013)	○	●	●
Range Rover (2013)	○	●	●
Range Rover Evoque 3DR (2013)	○	●	●
Range Rover Evoque 5DR (2013)	○	●	●
Discovery 5 (2017)	○	●	●
<u>Land Wind</u>			
X7 (2014)	○	●	●
<u>Luxgen</u>			
5 Sedan (2013)	○	●	●
7 (SUV) (2012)	○	●	●

	1	2	3
<u>Hyundai</u>			
Santa Fe L (2013)	○	●	●
Sonata Saloon (2013)	○	●	●
<u>Infiniti</u>			
M Saloon (2012)	○	●	●
G Saloon (2013)	○	●	●
Q50 Saloon (2014)	○	●	●
EX SUV (2013)	○	●	●
FX SUV (2013)	○	●	●
<u>Jaguar</u>			
F-Pace (2016)	○	●	●
XE (2015)	○	●	●
XF (2011)	○	●	●
XJ (2010)	○	●	●
<u>Jeep</u>			
Compass (2011)	○	●	●
Grand Cherokee (2011)	○	●	●
Patriot (2011)	○	●	●

	1	2	3
<u>Lexus</u>			
GX (SUV) (2012)	○	●	●
CT (2013)	○	●	●
IS (2013)	○	●	●
RX (SUV) (2013)	○	●	●
<u>Lifan</u>			
X60 (SUV) (2010-2012)	○	●	●
720 (2012)	○	●	●
<u>Maserati</u>			
Maserati Levante	○	●	●
Maserati Ghibli 2014	○	●	●
Maserati Quattroporte 2016	○	●	●
Maserati Gran Turismo 2007	○	●	●
<u>Mazda</u>			
Mazda 3 Hatch (2012)	○	●	●
Mazda 3 Axela Hatch (2016)	○	●	●
Mazda 3 Axela Sedan (2016)	○	●	●
Mazda 5 (2013)	○	●	●
Mazda 6 Saloon (2013)	○	●	●
Mazda CX-5 (2013)	○	●	●
Mazda CX-5 (2017)	○	●	●

	1	2	3
<u>Mercedes Benz</u>			
A Class (2013)	○	●	●
B Class (2012)	○	●	●
CLA (2013)	○	●	●
CLS Coupe (2012)	○	●	●
C-Class (2011)	○	●	●
C-Class (2016)	○	●	●
C-Class Saloon (2008 - 2012)	○	●	●
E-Class Saloon (2013)	○	●	●
GL-Class (2012)	○	●	●
GLE Class (2016)	○	●	●
ML Class (2012)	○	●	●
S-Class (2012)	○	●	●
S Class (2015)	○	●	●
V-Class (2015)	○	●	●
GLC Class	○	●	●
<u>MG</u>			
MG3 (2016)	○	●	●
MG5 (2012)	○	●	●
MG6 (2017)	○	●	●
MG GS (2016)	○	●	●
MG ZS (2017)	○	●	●

	1	2	3
<u>Mini</u>			
Paceman (2013)	○	●	●
Clubman (2016)	○	●	●
Countryman (2011)	○	●	●
Mini Hatchback 3dr (2015)	○	●	●
Mini Hatchback 5dr (2015)	○	●	●
<u>Mitsubishi</u>			
Lancer Fortis (2013)	○	●	●
Lancer Ex (2012)	○	●	●
ASX (2013)	○	●	●
Outlander (2013)	○	●	●
<u>Nissan</u>			
Lannia (2016)	○	●	●
Murano (2012 - 2015)	○	●	●
Murano (2016)	○	●	●
Qashqai (2014)	○	●	●
Qichen (Leaf) EV (2016)	○	●	●
Quest MPV (2013)	○	●	●
Sylphy (2016)	○	●	●
Teana (2013)	○	●	●
X-Trail (2010 - 2015)	○	●	●
X-Trail (2015)	○	●	●

	1	2	3
<u>Peugeot</u>			
301 (2013)	○	●	●
307 Hatch (2014)	○	●	●
307 Sedan (2013)	○	●	●
307 Hatch / Cross 307 (2013)	○	●	●
308 Saloon (2013)	○	●	●
308S 2014 Hatchback (2014)	○	●	●
408 (2015)	○	●	●
508 (2011)	○	●	●
508 (2016)	○	●	●
2008 (2014)	○	●	●
3008 (2009 - 2012)	○	●	●
3008 (2013)	○	●	●
5008 (2011)	○	●	●
<u>Porsche</u>			
Cayenne (2011)	○	●	●
Panamera (2011)	○	●	●
<u>Rely</u>			
V5 (2012)	○	●	●
<u>Riich</u>			
G5 (2012)	○	●	●

	1	2	3
<u>Roewe</u>			
950 (2012)	○	●	●
i6 (2017)	○	●	●
eRX5 EV (SUV) (2017)	○	●	●
RX5 (SUV) (2017)	○	●	●
<u>Seat</u>			
Ibiza (2013)	○	●	●
Leon (2013)	○	●	●
<u>Skoda</u>			
Yeti (2014)	○	●	●
Octavia (2015)	○	●	●
Superb (2013)	○	●	●
Superb (2016)	○	●	●
<u>Soueast</u>			
V5 (2013)	○	●	●
V6 Hatchback (2013)	○	●	●

	1	2	3
<u>Suzuki</u>			
Alto (2013)	○	●	●
S-Cross (2014)	○	●	●
Swift (2012)	○	●	●
Swift Sport (2011 - 2013)	○	●	●
SX-4 (2012)	○	●	●
Vitara (2015)	○	●	●
<u>Tesla</u>			
Model S (2014)	○	●	●
Model X (2016)	○	●	●
<u>Toyota</u>			
Corolla (2012)	○	●	●
Corolla EX (2012)	○	●	●
Crown (2012)	○	●	●
RAV4 (2012)	○	●	●
Reiz (2012)	○	●	●
Vios (2013)	○	●	●

	1	2	3
<u>Toyota</u>			
Camry (2012)	○	●	●
EZ (2013)	○	●	●
Highlander (2012)	○	●	●
Levin PHEV (2015)	○	●	●
<u>Venucia Nissan</u>			
D50 (2012)	○	●	●
T70 (2015)	○	●	●
<u>Volkswagen</u>			
Bora (2014)	○	●	●
Jetta (2013)	○	●	●
Magotan (2012)	○	●	●
Sagitar (2012)	○	●	●
CC (2012)	○	●	●
<u>Brilliance Zhonghua</u>			
H530 (2011)	○	●	●

	1	2	3
<u>Volkswagen</u>			
Lavida (2012)	○	●	●
Lavida (2013)	○	●	●
Gran Lavida (2013)	○	●	●
Passat (2012)	○	●	●
Tiguan L (2012 - 2015)	○	●	●
Tiguan L (2016)	○	●	●
Golf (7) (2014)	○	●	●
Gran Santana (2015)	○	●	●
Magotan (2016)	○	●	●
Santana (2013)	○	●	●
Touran L (2016)	○	●	●
Touareg (2010 - 2011)	○	●	●
Touareg (2012)	○	●	●
<u>Volvo</u>			
C30 (2012)	○	●	●
S60L (2011)	○	●	●
S80L (2012)	○	●	●
V40 (2013)	○	●	●
V60 (2011)	○	●	●
XC60 (2013)	○	●	●
XC90 Classic (2003 - 2013)	○	●	●
XC90 (2016)	○	●	●



Bulgaria, Plovdiv, Golyamokonarsko shosse Str. № 1
www.chipolino.com