

**IMPORTANT! READ THIS MANUAL CAREFULLY AND
KEEP IT FOR FUTURE REFERENCE!**

**INSTRUCTION MANUAL FOR
ELECTRICAL BABY CRADLE
„YOGA”**

YOGA



This **chipolino** product is produced in conformity with the requirements of the Directives of the European Parliament and the Council 2001/95/EC General Product Safety and 2009/48/EC Toy Safety, European Standard EN12790 Child use and care articles. Reclined cradles and assessment of the compliance of toys, the European standards applicable to toys and the Consumer Protection Law from national legislation.

TO SECURE SAFE USE OF THIS PRODUCT, FOLLOW THE WARNINGS, GUIDELINES AND RECOMMENDATIONS FROM THE INSTRUCTION MANUAL:

ATTENTION! WARNINGS!

- ❖ **CAUTION!** NEVER LEAVE THE CHILD UNATTENDED!
- ❖ **CAUTION!** STOP USING THE PRODUCT ONCE YOUR CHILD IS ABLE TO SIT UNAIDED OR WEIGHS MORE THAN 9 KG!
- ❖ **CAUTION!** THIS PRODUCT IS NOT INTENDED FOR LONG PERIODS OF USE AND SLEEP.
- ❖ **CAUTION!** NEVER LEAVE THIS PRODUCT ON ELEVATED, SLOPED OR SOFT SURFACES!
- ❖ **CAUTION!** ALWAYS USE THE SAFETY HARNESS!
- ❖ **CAUTION!** TO AVOID INJURY, MAKE SURE THAT THE CHILD IS AT SAFE DISTANCE WHILE MAKING ADJUSTMENTS, UNFOLDING, FOLDING AND STORING THE PRODUCT!
- ❖ **CAUTION!** DO NOT MOVE THE PRODUCT OR LIFT THE PRODUCT WHILE THERE IS A CHILD IN IT!
- ❖ **CAUTION!** DO NOT ALLOW CHILDREN PLAY WITH THIS PRODUCT!
- ❖ **CAUTION!** SET THE SOUND VOLUME LOW TO AVOID DAMAGE TO THE CHILD'S HEARING!
- ❖ **CAUTION!** KEEP AWAY FROM FIRE!
- ❖ Adult assembly required!
- ❖ Use for babies aged around up to 6 months with maximum weight 9 kg.
- ❖ Do not use the product for more than one child!
- ❖ The product is not a substitute for a cot or bed. If the child needs sleep, you must put it in a suitable bed or cot.
- ❖ Do not use the product if there are missing or damaged parts!
- ❖ Do not use spare parts or other components, which are not supplied by the producer! The producer revokes all responsibility in case you have used spare parts different from the approved type or from the recommended by the producer.
- ❖ Do not make changes or modifications to the structure! If necessary, contact the retailer or an authorized service for advice and repair.
- ❖ Do not tie strings or cords to the product to avoid risk of suffocation!
- ❖ Use the product only for its purpose.
- ❖ All settings regarding the power supply – turning on/off, replacing or charging of batteries to be done only by adult!
- ❖ Use only the AC/DC adaptor supplied by the producer.
- ❖ Regularly check the good working order of the AC/DC adaptor. Discontinue usage in case of damage.
- ❖ Do not allow presence of children under 3 years before assembly is complete to avoid their access to small or disassembled parts!
- ❖ Keep the nylon package away from children to avoid risk of suffocation!



IMPORTANT! WARNINGS AND GUIDELINES FOR USE OF BATTERIES

- ❖ Always secure the battery compartment cover after having inserted the batteries.
- ❖ Do not let children have access to the batteries or play with them!
- ❖ Insert batteries only of the designated type and voltage.
- ❖ Do not use batteries of different types.
- ❖ Do not mix used and new batteries.
- ❖ Follow the designated polarity in the battery compartment.
- ❖ Remove the damaged or worn out batteries.
- ❖ Remove the batteries when you are not using the product.
- ❖ Do not throw the batteries in open fire. Do not take the batteries to pieces.

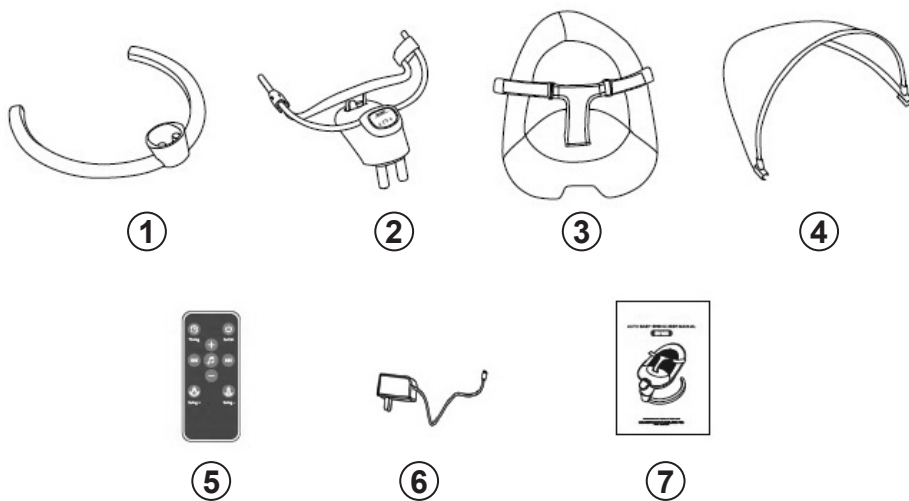
CAUTION! Waste from exhausted or unusable batteries must be disposed of separately. Do not dispose of the batteries with your household waste. Throw out the batteries at the designated places.



PRODUCT FEATURES

- ❖ Intended for newborns and very little children aged between 0 and 6 months, who cannot sit unaided with maximum weight 9kgs;
- ❖ Safety harness;
- ❖ FUNCTIONS:
 - 8 speeds
 - Timer for 5, 10, 15, 20, 25, 30, 35 and 40 minutes)
 - 8 volume levels
 - 9 melodies
- ❖ Canopy with mosquito net and toys;
- ❖ Remote control - 1 battery type CR2025 (3V), included in the set.
- ❖ Power supply of cradle: adapter AC 100-240V 50/60Hz and DC 6V/1A;

MAIN PARTS



№	Description	Q-ty	№	Description	Q-ty
1	Base	1 pc	5	Remote control	1 pc
2	Frame	1 pc	6	Adapter	1 pc
3	Seat	1 pc	7	Instruction manual	
4	Canopy	1 pc			

ASSEMBLY GUIDE

IMPORTANT! Follow exactly the guidelines and the sequence of steps for product assembly and use which you will find in the figures in this manual.

CAUTION! After completing each step, check that fixing is secure!

CAUTION! Fixing in certain position is most of the times accompanied with a click!

CAUTION! Make sure all pins have shown through the openings.

Tools needed: To complete assembly of swing you do not need to use tools.

The assembly actions are numbered from 1 to 5. Use their descriptions below along with the illustration with the same number.

1 – INSTALLATION AND REMOVAL OF FRAME OF THE BASE

Join tube 2 with tube 1. Fix it with two screws. The base is assembled.

Place the frame in the base, as shown in figure and press (1-1 and 1-2). Make sure they are well fixed .

Press the removal button and remove the frame from the base (1-3).

2 – INSTALLATION OF SEAT

Insert the seat tubes in the frame tube, until pins protrude from the corresponding holes (2-4). Place the upholstery (2-5) and fasten the straps buckles on back of the upholstery (2-6).

3 – INSTALLATION OF CANOPY

Place the two ends of the canopy frame to the tubes of the seat and press (3-1). Push or pull the canopy with your hand in order to fold or open it (3-2).

4 – ADJUSTING THE SEAT

The seat can be adjusted in 3 positions:

- Low – suitable for baby's rest;
- Middle – suitable for feeding the baby;
- High – suitable for play with the baby.

Hold the adjusting button pressed and move the seat up or down. When the desired position is fixed you will hear a click.

ATTENTION! DO NOT ADJUST THE SEAT WHILE THERE IS CHILD IN IT!

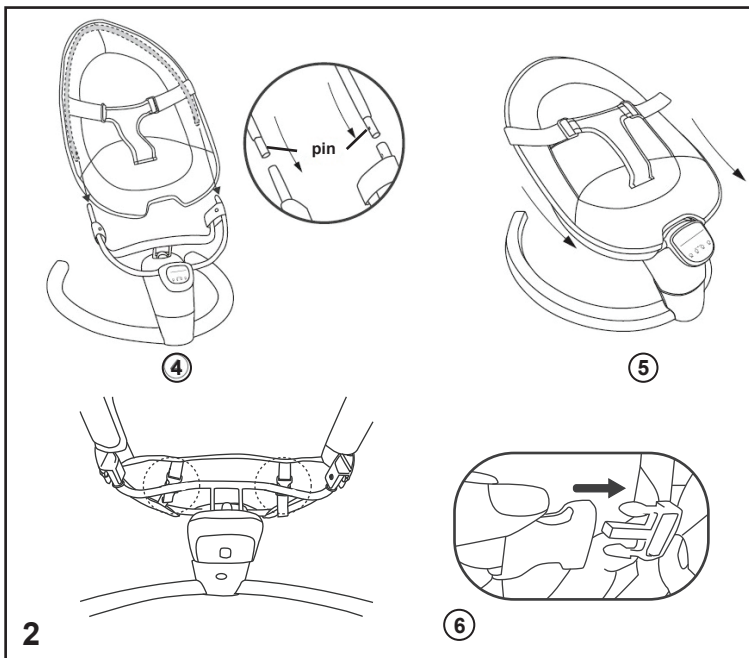
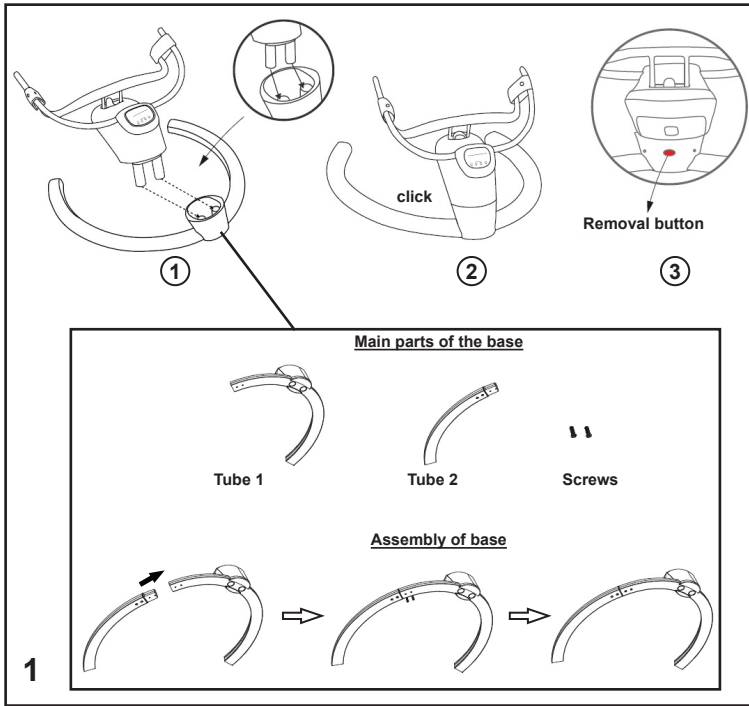
5 – RESTRAINT SYSTEM (SAFETY HARNESS)

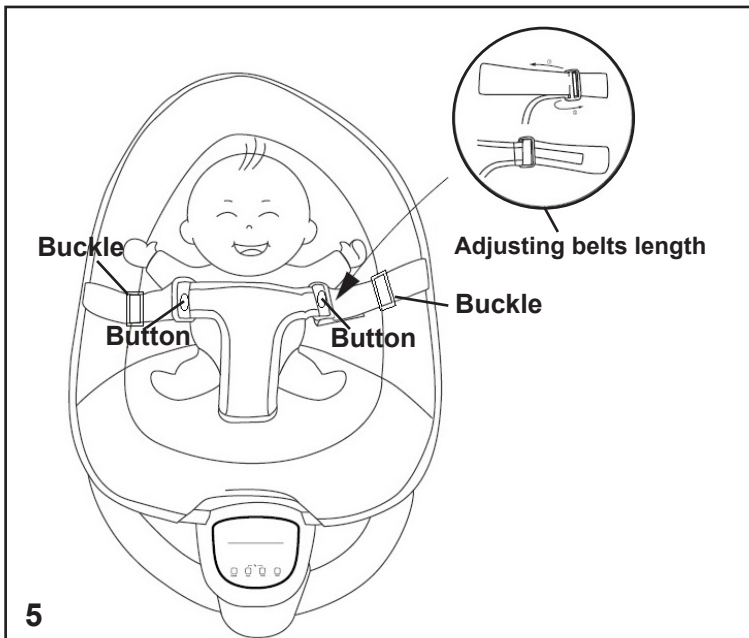
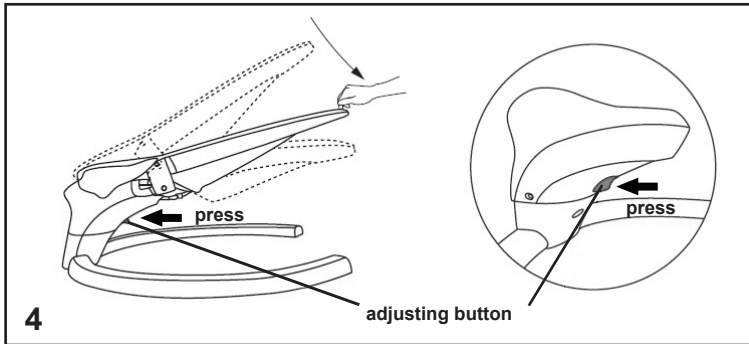
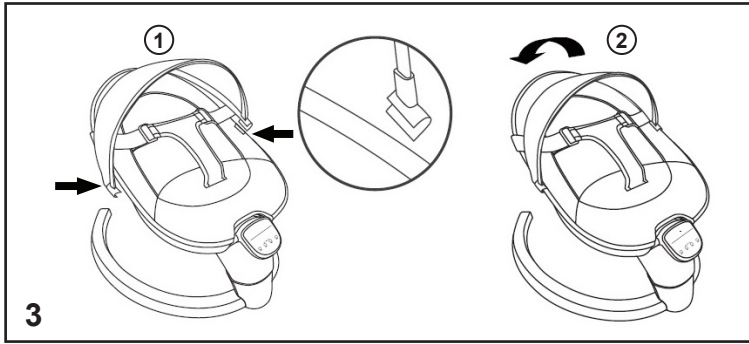
Place the baby in the cradle and fasten the belt on both sides.

To unfasten the belt, press the buckle.

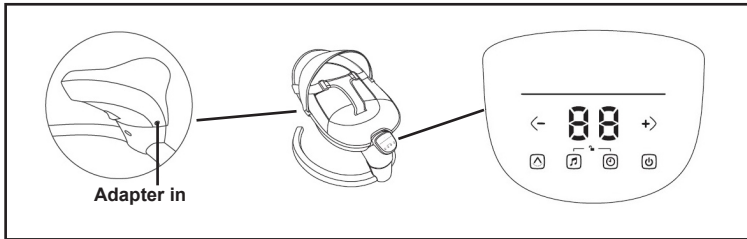
Adjust the belts so that they fit well the child and are not twisted

CAUTION! Periodically check to ensure that the seat belt is securely attached to the stroller frame as well as securely fastened. The belts should not be worn or torn, and plastic buckles and fasteners must be sturdy, free of damage and secure.





CONTROL PANEL AND MUSIC



	<p>Power supply button Press the switch to power on the cradle. The symbol shown here will be illuminated in white. Press again to power off.</p>
	<p>Timer button (choosing the period for cradling) (5, 10, 15, 20, 25, 30,35 and 40 minutes) When the music and cradle functions are on, press the timer button. The display will be activated. With buttons „+“ and „-“, choose the desired period from 5 up to 40 minutes - each 5 minutes (5, 10, 15, 20, 25, 30, 35 and 40 minutes).</p>
	<p>Melodies button Press the power button and then the melodies button. You can hear 9 melodies, which will change automatically. If you want to choose the next melody, press the button. To turn off the melodies, press and hold the button.</p>
	<p>Remembering the last melody: Turn off the melodies. When you press the button again, you will hear the last melody that was playing. When melodies are turned on, the symbols of melodies and timer will light up one after another. If you have to use the musical function, press the melodies button and then press it again to hear the next melody. To adjust the volume level, press „+“ and „-“. Volume may be adjusted in 8 levels. Level 1 – lowest, and level 8 – loudest.</p>
	<p>Cradle speed button Switch the power on, then press the cradle speed button. The symbol shown here will illuminate in white and the display will be activated. Press „+“ and „-“, to adjust the cradle speed. There are 8 cradle speeds. When you choose „0“ the cradle function is turned off. If the timer, melodies and cradle functions are on, their symbols will light up consequently. If you want to adjust the cradle speed, but the button does not light, press it and choose the desired speed.</p>
<p>NOTE</p>	
<p>If the control panel and music do not work for 1 minute, the system will lock automatically. You must press simultaneously the melodies and timer buttons to unlock the system.</p>	
<p>Power supply with adapter (Adapter in) - In AC 100-240V - 50/60Hz and out DC 6V/1A. <i>Insert the adapter in the control panel in, and the plug must be inserted in the wall outlet (230V).</i></p>	

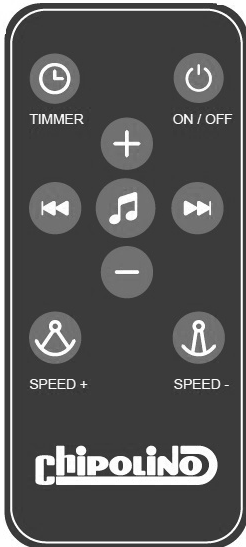









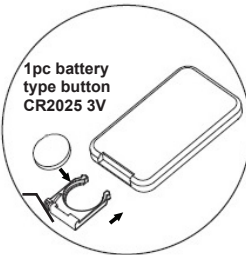
REMOTE CONTROL

CAUTION! TO BE MANAGED ONLY BY AN ADULT!
CAUTION! REMOTE CONTROL DEVICE IS NOT A TOY!

ATTENTION!

IN ORDER TO CONTROL THE CRADLE WITH THE REMOTE CONTROL, YOU MUST POINT THE REMOTE CONTROL TO THE CONTROL PANEL!

IMPORTANT: Pull the PVC stopper at the end of the remote control before use to activate it.

		<p>BUTTON ON/OFF Press the button to power on. The button will be illuminated in white. Press the button again to turn off the power.</p>
		<p style="text-align: center;">TIMER BUTTON (CHOOSING CRADLE DURATION) (5, 10, 15, 20, 25, 30,35 and 40 minutes)</p> <p>After the cradle function is activated, the timer button will light at each pressing. You can choose duration of 5 up to 40 minutes (5, 10, 15, 20, 25, 30, 35 and 40 minutes).</p>
		<p style="text-align: center;">MELODIES BUTTON</p> <p>Press the button in order to start or stop playing melodies.</p>
		<p>VOLUME CONTROL BUTTON</p>
		<p>VOLUME CONTROL BUTTON</p>
		<p>CHOOSING THE PREVIOUS MELODY</p>
		<p>CHOOSING THE NEXT MELODY</p>
		<p style="text-align: center;">INCREASING CRADLE SPEED</p> <p>Press the button when power is on. You can choose 8 cradle speed. When choosing „0“ the cradle function is turned off.</p>
		<p style="text-align: center;">DECREASING CRADLE SPEED</p> <p>Press the button when power is on. You can choose 8 cradle speed. When choosing „0“ the cradle function is turned off.</p>
	 <p>1pc battery type button CR2025 3V</p>	

CARE AND MAINTENANCE

- ❖ Clean the plastic and metal parts with slightly damp soft cloth with mild soap.
- ❖ Clean the canopy with toys and toys with damp towel. Follow the guidelines from the label of each toy.
- ❖ The upholstery may be hand washed at 30°.
- ❖ Do not tumble or machine dry.
- ❖ Do not wet with water or other liquids the adaptor, control box or remote control. Before cleaning, remove the plug of the adaptor from the socket and turn off the power supply!
- ❖ Do not clean with abrasive detergents containing ammonia, bleach or spirit.
- ❖ When you store or transport the product, do not place items or objects in or on it because you may damage the structure, fabric cover or control box.
- ❖ Store the product in a clean and dry place. Do not subject to direct environmental influence – sun, rain, moisture or harsh temperature changes!

Fabric composition:

100% polyester



Soft toys:

Toys are marked
with compliance sign



Used materials: ABS, textile, metal.

SHEYG021XXX/BY055

CHIPOLINO

Bulgaria, Plovdiv, Str. Golyamokonarsko shosse №1

www.chipolino.com