

JVS-DL68-Z78

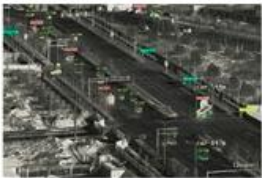
Super Long Range Heavy-load PTZ Thermal Camera



Key Features

- 6th Gen Uncooled focal Plane Array VOx Detector
- 78x Zoom
- 31 ~ 155mm Thermal Lens
- 13Km Distance Detection
- Support 360° Pan and Tilt
- Support Intelligent Functions
- Support Hot-spot Detection
- Optional Laser Illuminator
- Anti-salt spraying support

Long-range Detections



Car Detection



Truck Detection



Ship Detection



Drone Detection

Model	JVS-DL68-Z78
Thermal Imaging	
Detector	6 th Gen Uncooled focal Plane Array VOx Detector
Detector Array	640 x 512
Field of View	20° x 15° ~ 4° x 3°
Wavelength	8 ~ 14μm
NETD	40mK (@25°C F1.0)
Lens	31 ~ 155mm Thermal Lens
Detection Distance	13,000m to the car, 4,800m to the person. The detection distance of 2X2 meters fire source can reach 10,000m (3X3 pixels)
Recognition Distance	3,400m to the car, 1,300m to the person
Lens Control	Digital Zoom, Manual/ Auto Focus, 3A adaptive active focus algorithm, supports multiple trigger modes, precise and high speed. 3CAM method and AS+DOE optical-mechanical structure, high infrared transmittance, no virtual focus during zooming process, the axis is too small.
Image Enhancement:	SDE digital image enhancement technology, improve the details of the image, support 255-level thermal image enhancement adjustment
Pseudo-color Polarity	16 Pseudo-color images, Hot black/ Hot white two polarities
Image Parameters	AGC automatic gain control, brightness, contrast adjustment
Digital Zoom	1.0~8.0x continuous zoom (Step size 0.1), support optical electronic relay zoom, support global eagle eye diagram
Ranging Ruler	Support
Dead Pixel Correction	Support
Image Correction	Support manual correction, Background correction, Automatic correction time interval
Bright Light Protection:	Supports sun damage
Visible Imaging	
Sensor Type	Back-illuminated ultra-low illumination starlight CMOS
Minimum Illumination	Color: 0.0005Lux; Black & White: 0.0001Lux; 0Lux (IRON)
Lens	11 ~ 860mm HD motorized zoom; Manual/auto focus, 3A adaptive active focus algorithm, supports multiple trigger modes, accurate and high-speed
Image Processing	Supports White balance, Electronic shutter, Frame accumulation, BLC, HLC, 2D/3D DNR, Electronic image stabilization, WDR, Heat wave drift suppression
Day and Night	0.4 ~ 0.75μm visible light wide spectral window and 0.8 ~ 0.95μm near-infrared spectral window. Day and night independent double clear light window, improve the signal-to-noise ratio of imaging light and stray light
Defog	Support digital defog, Optical defog
Laser Light Source (Optional)	
Technology	Patented technology of the new infrared GHT-III HD flood light super- homogenization light source. No speckle particles and the brightness balance of all focal segments is > 92%.
Irradiation Distance	3,000 meters
Wavelength	810nm military grade infrared laser
Illumination Angle	0.5° ~ 20° DSS digital stepping illumination angle control technology
Laser Safety	Adopt ZQB safety laser beam processing patented technology, in line with international IEC 60825 safety standards

Audio & Video	
Thermal Image Resolution	1920x1080; 1280x1024; 1280x960; 1024x768; 1280x720; 704x576; 640x512; 640x480; 400x300; 384x288; 352x240
Visible Light Resolution	2592x1520; 2560x1440; 1920x1080; 1280x1024; 1280x960; 1024x768; 1280x720; 704x576; 640x512; 640x480; 352x288; 352x240
Video Encoding	H.265/H.264/MJPEG, Support multi-stream
Video Bitrate	32Kbps ~ 16Mbps
Audio Codec	G.711A / G.711U/ G726
Image Flip	Left/ Right/ Up/ Down/ Diagonal
OSD Settings	Support OSD display settings of channel name, time, PTZ orientation, field of view angle, focal length, and support preset name setting.
Hotspot/ Smoke Detection Alarm	
Alarm Threshold	255 Levels
Target Size	Support range adjust and automatically identify targets of different sizes
Number of Alarm Targets	1 ~ 16
Alarm Mode	Video overlay alarm box + Data return (Or switch value) multiple alarm modes. The alarm is intuitive and easy to read
Front-end Algorithm	Optimized front-end fast processing algorithm, based on each frame analysis of raw heat map data. Alarm response 0.1Sec. No delay, No information loss
Other Alarm	Support visible light fireworks detection alarm
Smart Function	
Intelligent Analysis	Support Intrusion detection, Cross-border detection, Entry/exit area detection, Motion detection, Loitering detection, People gathering, Fast movement, Target tracking, Item leftover, Item retrieval. Human/Vehicle target detection, Face detection and supports 16 regional settings. Supports intrusion detection, human and vehicle screening and filtering functions. Supports target temperature screening and filtering functions
Automatic Tracking	Support single scene tracking / Multi scene tracking / Panorama tracking / Alarm linkage tracking
Intelligent Information Fusion	Support 512 AR intelligent information fusion, Support fire point, Intelligent analysis video identification information function, Support azimuth angle, Field angle, Focal length, Multiple information fusion
Image Fusion	Support 18 dual-light fusion modes, Support picture-in-picture function
Alarm Management	Support alarm snapshot upload
Protecting Mask	
Material	Precision cast aluminum alloy shell, stainless steel fixings, strong wind resistance
Knot Structure	Integrated multi-window design. Support for wipers (Optional plug-in small spray device, Self-storage, no damage to freezing, does not affect the function of the host)
Window Glass	4mm microcrystalline infrared high-efficiency anti-reflection HLIN optical glass, transmittance>98%
Surface Spraying	PTA three-proof coating, Anti-seawater corrosion
Temperature Control	The overall use of thermal balance design + wide temperature electronic and optoelectronic devices, built-in heating, heat dissipation and other temperature control components, can work in low and high temperature environments
Physical Interface	Aviation waterproof plug
PTZ	
Range	Pan 0°~360°, Tilt -45° ~ +45°
Rotational Speed	Horizontal 0.01°/Sec ~ 30°/Sec, Vertical 0.01°/S ~ 15°/Sec, Support lens focal length speed adaptive function
Accuracy	±0.1°
Preset Cruise	3000 presets, support 16 cruise routes, each can support 256 presets
Watch	Preset position/pattern scan/cruise scan/vertical scan/frame scan/panorama scan/apple peel scan/horizontal fan scan line scan
Zoom	Support 3D frame selection zoom
Memory	Support (Can restore the position before power-off, preset position status, cruise status, line scan status)
Orientation	Support angle query/real-time return, positioning; support lens field of view return and positioning
Zero-point Correction	Support the north zero-point remote correction function

Network	
Interface	1x RJ 45, 10/100 Base-T adaptive
Protocols	HTTP, HTTPS, FTP, SMTP, DNS, NTP, RTSP, RTCP, RTP, TCP, UDP, ICMP, DHCP, ONVIF, GB28181
Development	Easy to use SDK available
Optical Network	Optional built-in optical fiber module, Single-mode optical fiber output, Improve anti-interference
General	
Power Supply	AC/DC 24V, Anti-reverse polarity protection
Power Consumption	≤180W
Working Temperature	-40°C ~ +60°C
Storage Temperature	-45°C ~ +70°C
Humidity	<90%Rh
Lightning Protection	Built-in surge protection 6000V
Anti-salt Spray	PH value of 6.5 to 7.2, continuous spraying for 96 hours
Ingress Protection	IP66
Weight	45Kg (Including the mount)

Applicable For



Oilfield Protection



Border Defense



Coastal Defense



City Security



Wild Fire Prevention



River Security