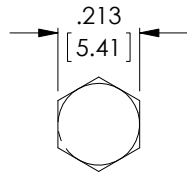
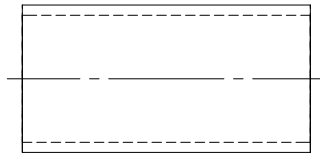


THE INFORMATION CONTAINED IN THIS DRAWING IS THE SOLE PROPERTY OF L-COM, INC. ANY REPRODUCTION IN PART OR WHOLE WITHOUT THE WRITTEN PERMISSION OF L-COM, INC. IS PROHIBITED.

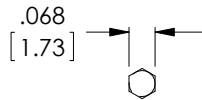
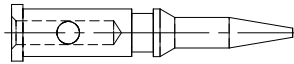
RoHS Compliant ✓

REVISIONS			
REV	DESCRIPTION	DATE	APPROVED
A	INITIAL RELEASE	9/9/03	A. VAJANYI
B	ECN 6473: UPDATED FORMAT. ADDED FERRULE AND PIN CRIMP SIZE	10/18/12	D. DESJARDIN
C	ECN 6493: UPDATED INSULATOR MATERIAL	10/29/12	D. DESJARDIN

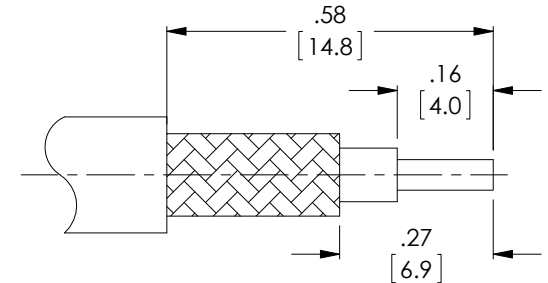
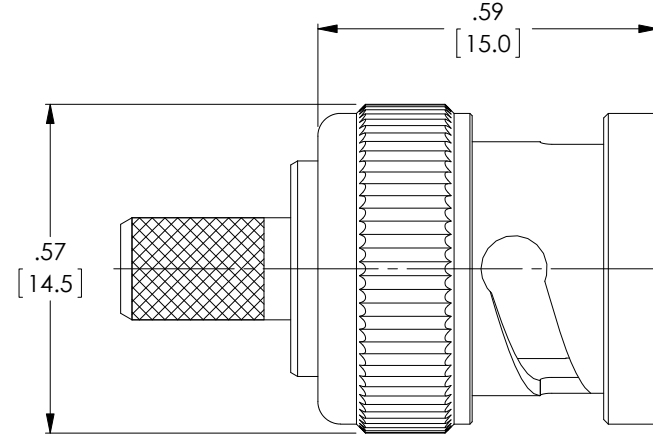
DESCRIPTION	MATERIAL	FINISH
BODY	BRASS	NICKEL
INSULATOR	PTFE	-
CENTER PIN	BRASS	GOLD
FERRULE	BRASS	NICKEL
SHELL	BRASS	NICKEL
WASHER	BRASS	NICKEL
CURVED WASHER	HIGH CARBON STEEL	NICKEL
RETAINING RING	BRASS	NICKEL
GASKET	RUBBER	-



RECOMMENDED FERRULE CRIMP SIZE



RECOMMENDED PIN CRIMP SIZE



RECOMMENDED CABLE STRIPPING

NOTES:

ELECTRICAL:

IMPEDANCE: 50 Ohms
 DIELECTRIC WITH STAND VOLTAGE: 1500V RMS
 FREQUENCY RANGE: DC ~ 4 GHz
 VOLTAGE RATING: 500V PEAK
 INSERTION LOSS: .20dB MAX.
 CABLE RETENTION: 30 lbs. PULL.

MISCELLANEOUS:

COMPONENT SHALL BE INDIVIDUALLY PACKAGED IN ACCORDANCE WITH L-COM SPECIFICATION PS-0031.

ALL DIMENSIONS ARE FOR REFERENCE ONLY

UNLESS OTHERWISE SPECIFIED, DIMENSIONS ARE IN INCHES [mm] OVERALL CABLE LENGTH TOLERANCE: ≤12 [305] = +1 [25] / -0 >12 [305] ≤60 [1524] = +2 [51] / -0 >60 [1524] ≤120 [3048] = +4 [102] / -0 >120 [3048] ≤300 [7620] = +6 [152] / -0 >300 [7620] = +3% / -0%	APPROVALS	DATE		45 BEECHWOOD DRIVE NORTH ANDOVER, MA 01845
	DRAWN BY A. VAJANYI	9/9/03		CATEGORY COAXIAL
ALL OTHER DIMENSIONAL TOLERANCES: .X = ±.2 .XX = ±.02 .XXX = ±.005	CHECKED BY A. VAJANYI	9/9/03	PRODUCT DESCRIPTION CON,BNC MALE CRIMP LMR195	
	APPROVED BY P. PESA	9/9/03	SIZE A	FSCM NO. 43321
PROJECTION 	CONFIGURATION DETAILS OF UNDIMENSIONED FEATURES MAY VARY		DWG. NO. ABM-1700	REV. C
COLOR VARIATIONS MAY OCCUR		SCALE: NONE	CAD FILE: ABM-1700.SLDDRW	SHEET 1 OF 1