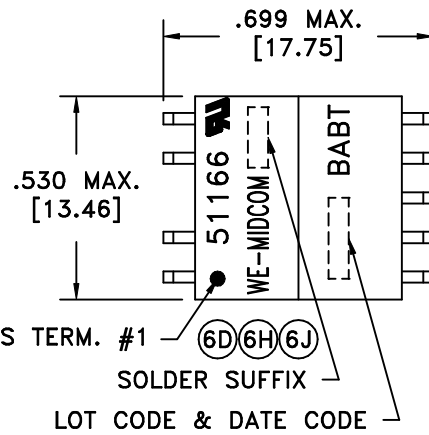
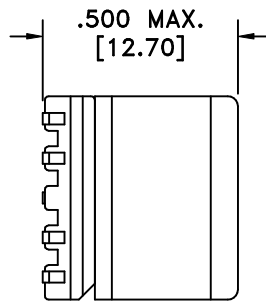
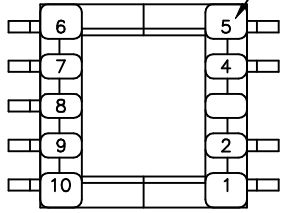


TERM. NO.'s FOR REF. ONLY



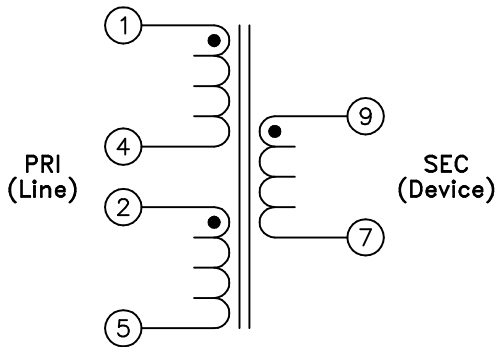
DOT LOCATES TERM. #1

SOLDER SUFFIX

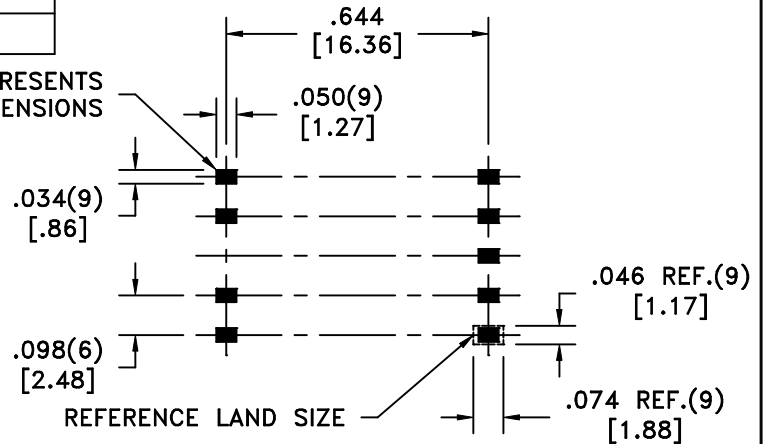
LOT CODE & DATE CODE

6J

SOLDER SUFFIX	CUSTOMER TERMINAL	RoHS	LEAD(Pb)-FREE
	Sn63%, Pb37%	No	No
LF1	Sn96%, Ag4%	Yes	Yes



AREA REPRESENTS TERMINAL PAD DIMENSIONS



CUSTOMER TO DETERMINE LAND LAYOUT

6G

ELECTRICAL SPECIFICATIONS @ 25°C unless otherwise noted:

LONGITUDINAL BALANCE: 55dB min., 20k - 500kHz, per ITU Method (L->M).

D.C. RESISTANCE (@20°C):
 1-4, 1.36 ohms ±10%.
 2-5, 1.36 ohms ±10%.
 9-7, 0.315 ohms ±10%.

INSERTION LOSS: 0.5dB max., 40kHz, 8.4 ohm load.

6D DIELECTRIC RATING: 2000VAC, 1 minute tested by applying 2050VAC for 1 second between 1-9(tie 2+4). 850VDC for 1 second between 1-2.

6C INDUCTANCE: 2.07mH ±5%, 10kHz, 100mVAC, 0/100mADC, 1-5(tie 2+4), Ls.

6C LEAKAGE INDUCTANCE: 15uH max., 100kHz, 100mVAC, 1-5(tie 2+4, 9+7), Ls.

TURNS RATIO: (1-5):(9-7) = 4:1, tie(2+4), ±1%.

6C TOTAL HARMONIC DISTORTION: -75dB max., 5kHz, 2Vrms across PRI, 8.4 ohm load, 135 ohm input, tie(2+4).

INTERWINDING CAPACITANCE: 70pF max., 100kHz, 100mVAC, 1-9(tie 2+4), Cs.

OPERATING TEMPERATURE RANGE: -40°C to +85°C.

6D Designed to comply with the following requirements as defined by IEC60950, EN60950, UL60950/CSA60950 and AS/NZS60950:
 - Supplementary insulation for a primary circuit at a working voltage of 250Vrms.
 - Reinforced insulation for a secondary circuit at a working voltage of 150VDC.

DETAILS SUBJECT TO CHANGE

6D

AGENCY NUMBER	
BABT	NC/011325
UL60950	E205930
CSA60950 (Via CUL)	E205930
IEC60950 (Via CB cert.)	NO 11577
ACA/AUSTEL (Via CB cert.)	NO 11577
JAPAN (Via CB cert.)	NO 11577

Unless otherwise specified:
 Tolerances:
 Angles: ±1°
 Fractions: ±1/64
 Decimals: ±.005[.13]
 This drawing is dual dimensioned.
 Dimensions in brackets are in millimeters.

DRAWING TITLE
TRANSFORMER
 eiSos p/n:
 REVISIONS: SEE SHEET 1

DRAWING NO. **51166R/-LF1** REV. 6K 5/06
 SCALE --- SHEET 2 OF 6

DWG.# 51166R/-LF1