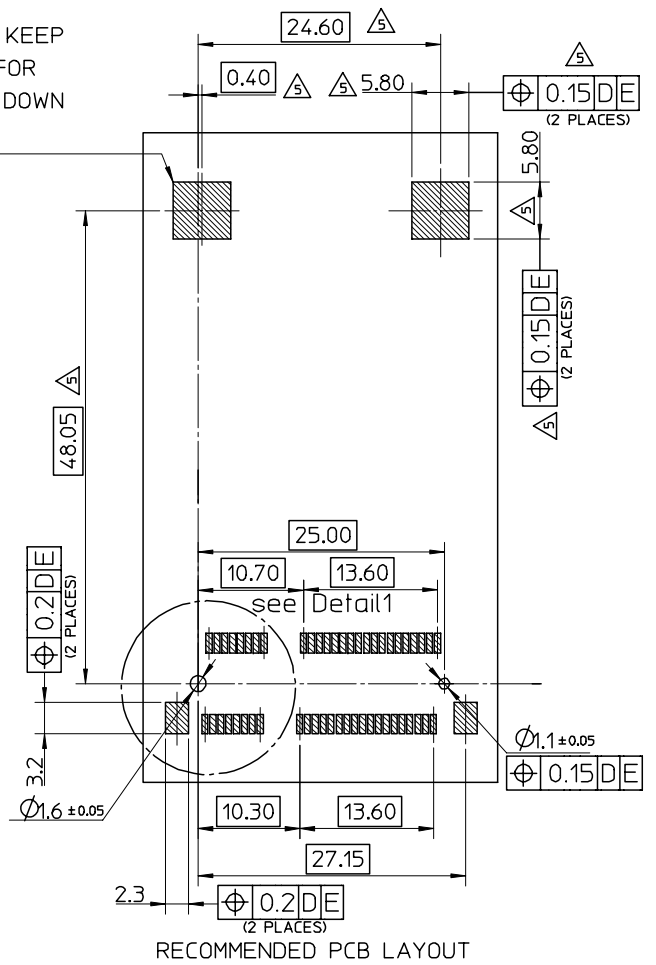
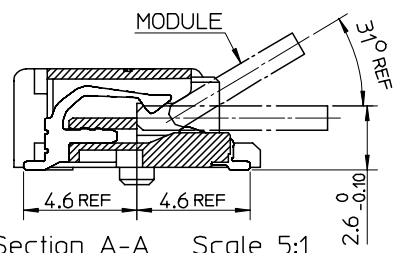


COMPONENT KEEP OUT AREA FOR CARD HOLD DOWN SOLUTION



- NOTES:
- MATERIALS:
HOUSING:LCP,COLOR:BLACK, UL94V-0.
CONTACT: PHOSPHOR BRONZE NAIL:BRASS
 - FINISH
CONTACT:SELECTIVE GOLD IN CONTACT AND SOLDER AREA.
UNDERPLATED:NICKEL OVERALL
NAIL:TIN IN SOLDER AREA.
UNDERPLATED:NICKEL OVERALL.
 - THE MODULE CARD REFERENCE MINI PCI EXPRESS CARD ELECTROMECHANICAL SPECIFICATION.
 - DATUM D IS THE TOP SURFACE OF PCB.
 - IF THE CONNECTOR USED WITH 48099-00**,LATCH SIDE RECOMMENDED PCB LAYOUT REFERS TO SD-48099-0**.
 - PART 67910**** COMPLIANT TO ROHS DIRECTIVE 2002/95/EC AND ELV DIRECTIVE 2000/53/EC.

679100002	10 MICROINCH GOLD
679101002	GOLD FLASH



RELEASED EC NO: SH2007-0020 2006/08/02 DRWN:DHU 2006/08/02 CHKD:HARVEY 2006/08/02 APPR: JNCHEN 2006/08/09	DESCRIPTION	QUALITY SYMBOLS	GENERAL TOLERANCES (UNLESS SPECIFIED)	DIMENSION STYLE	SCALE	DESIGN UNITS	THIRD ANGLE PROJECTION													
		$\nabla=0$ $\triangle=0$	<table border="1"> <thead> <tr> <th></th> <th>mm</th> <th>INCH</th> </tr> </thead> <tbody> <tr> <td>4 PLACES</td> <td>± ---</td> <td>± ---</td> </tr> <tr> <td>3 PLACES</td> <td>± ---</td> <td>± ---</td> </tr> <tr> <td>2 PLACES</td> <td>± 0.25</td> <td>± ---</td> </tr> <tr> <td>1 PLACE</td> <td>± 0.25</td> <td>± ---</td> </tr> </tbody> </table>		mm	INCH	4 PLACES	± ---	± ---	3 PLACES	± ---	± ---	2 PLACES	± 0.25	± ---	1 PLACE	± 0.25	± ---	MM ONLY	2:1
	mm	INCH																		
4 PLACES	± ---	± ---																		
3 PLACES	± ---	± ---																		
2 PLACES	± 0.25	± ---																		
1 PLACE	± 0.25	± ---																		
				DRAWN BY J. CHIANG 2003/02/25	DATE	TITLE	MINI PCI EXPRESS CONN. 0.8 MM PITCH 52CIRCUIT 4.0MM H													
				CHECKED BY C. WILSON 2003/03/06	DATE															
				APPROVED BY L. ERICK 2003/03/06	DATE															
				MATERIAL NO.		DOCUMENT NO.	SD-67910-001													
				SIZE A3			SHEET NO. 1 OF 2													
			DRAFT WHERE APPLICABLE MUST REMAIN WITHIN DIMENSIONS	SEE TABLE																

10 9 8 7 6 5 4 3 2 1

F

E

D

C

B

A

F

E

D

C

B

A

NOTES;

1. PIN NUMBERING REFERENCE:

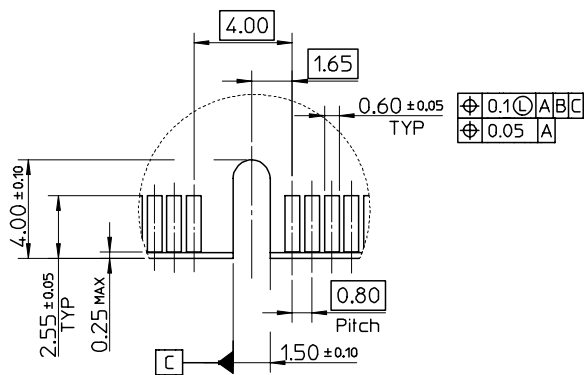
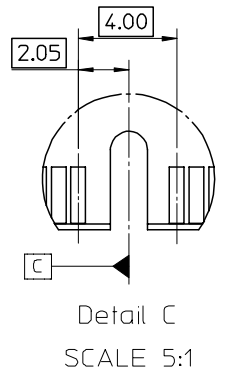
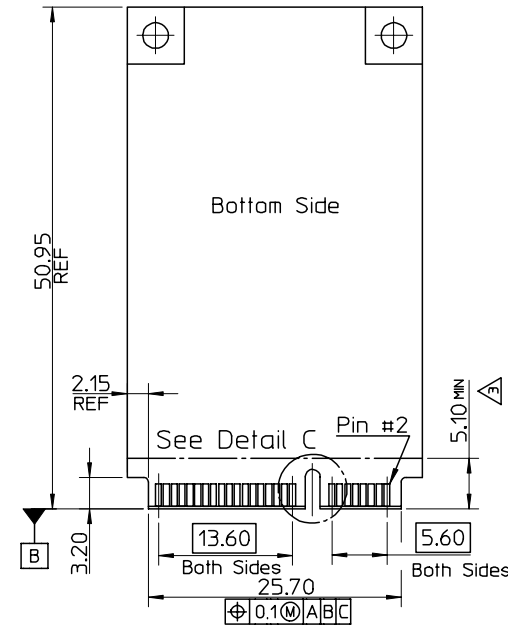
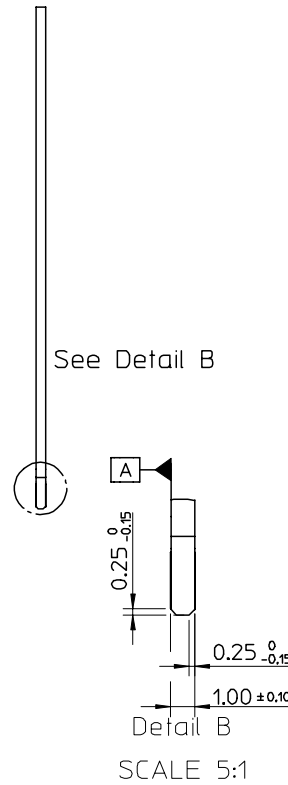
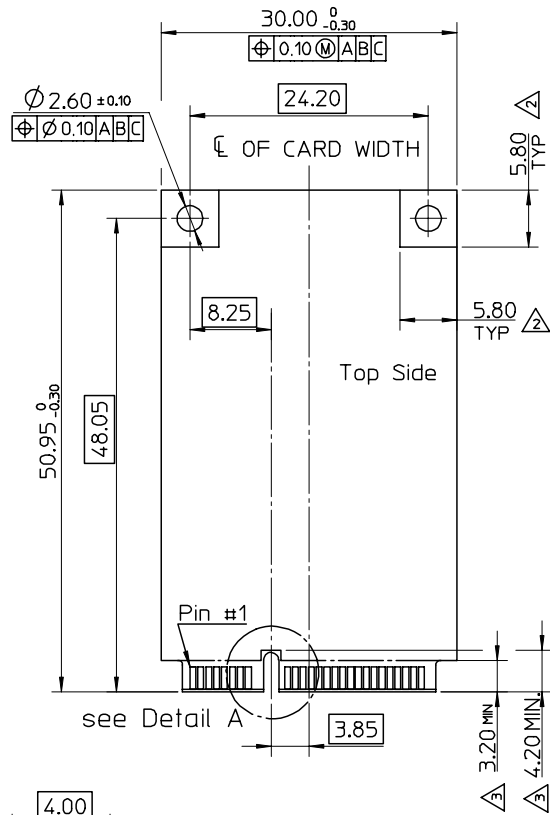
ODD PINS - TOP SIDE

EVEN PINS - BOTTOM SIDE

△ COMPONENT AND ROUTING (ALL LAYERS)

KEEP OUT AREA FOR HOLD DOWN SOLUTIONS.

△ COMPONENT KEEP OUT AREA FOR CONNECTOR.



RELEASED EC NO: SH2007-0020 2006/08/02 DRWN:DHU CHKD:HARVEY APPR: JNCHEM 2006/08/02 2006/08/02 2006/08/09	DESCRIPTION	QUALITY SYMBOLS	GENERAL TOLERANCES (UNLESS SPECIFIED)		DIMENSION STYLE	SCALE	DESIGN UNITS	THIRD ANGLE PROJECTION		
		▽=0 △=0	mm	INCH	MM ONLY	1:1	METRIC			
			4 PLACES	± ---	± ---	DRAWN BY	DATE	TITLE		
			3 PLACES	± ---	± ---	J. CHIANG	2003/02/25	MINI PCI EXPRESS CONN.		
			2 PLACES	± 0.25	± ---	CHECKED BY	DATE	0.8 MM PITCH		
			1 PLACE	± 0.25	± ---	C. WILSON	2003/03/06	52CIRCUIT 4.0MM H		
			ANGULAR ± 3 °			APPROVED BY	DATE	MOLEX INCORPORATED		
			DRAFT WHERE APPLICABLE MUST REMAIN WITHIN DIMENSIONS			L. ERICK	2003/03/06	MOLEX INCORPORATED		
			SEE TABLE			MATERIAL NO.	DOCUMENT NO.	SHEET NO.		
			SIZE A3			SD-67910-001		2 OF 2		
THIS DRAWING CONTAINS INFORMATION THAT IS PROPRIETARY TO MOLEX INCORPORATED AND SHOULD NOT BE USED WITHOUT WRITTEN PERMISSION										

9 8 7 6 5 4 3 2 1

Mouser Electronics

Authorized Distributor

Click to View Pricing, Inventory, Delivery & Lifecycle Information:

[Molex:](#)

[67910-0002](#)