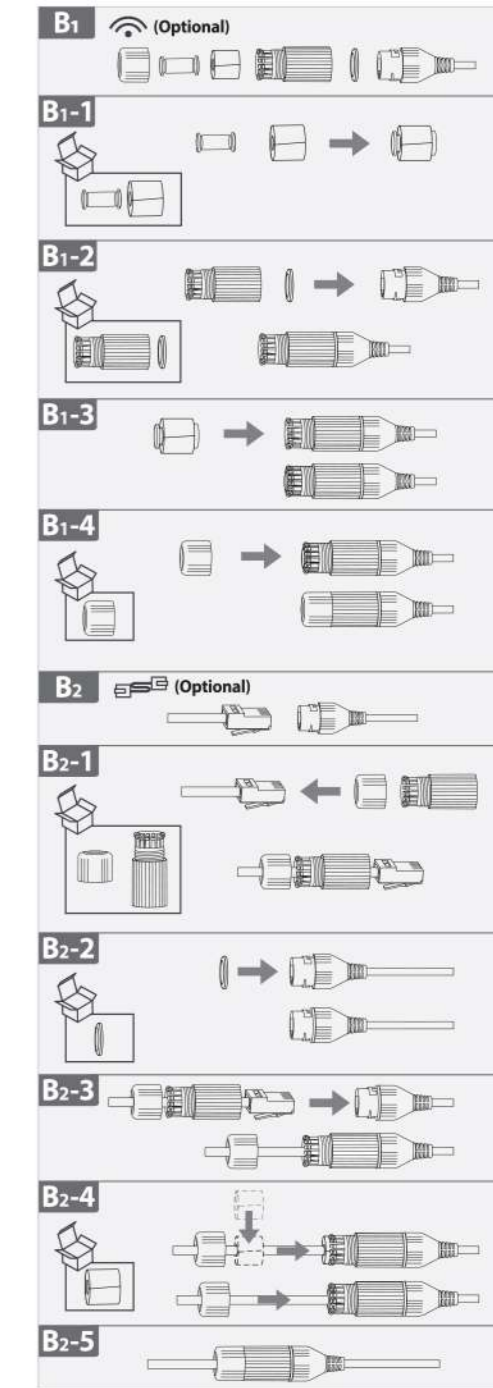
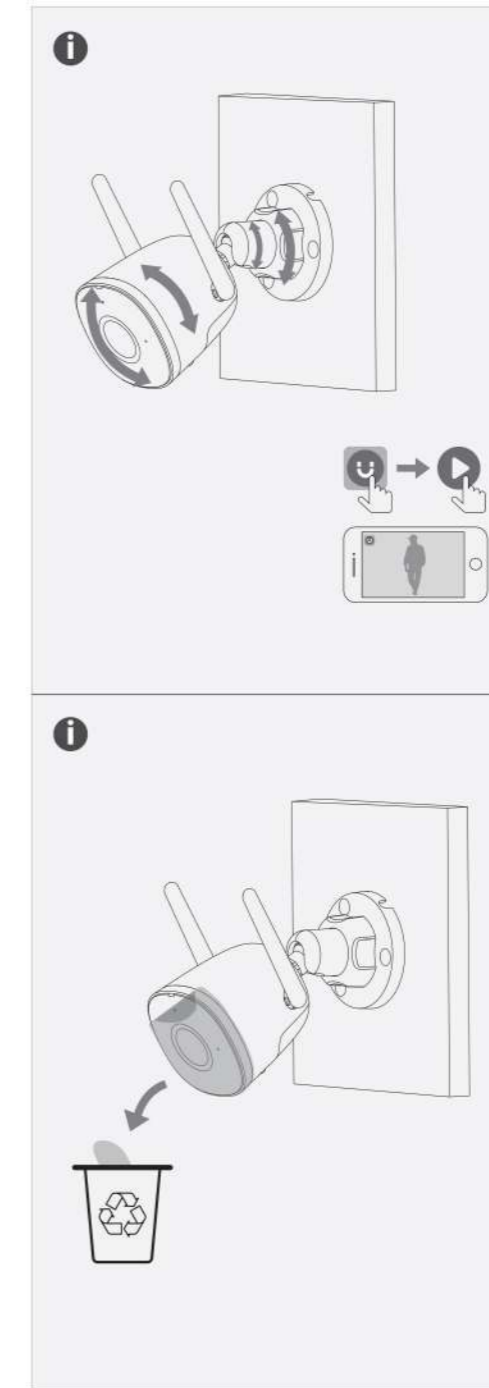
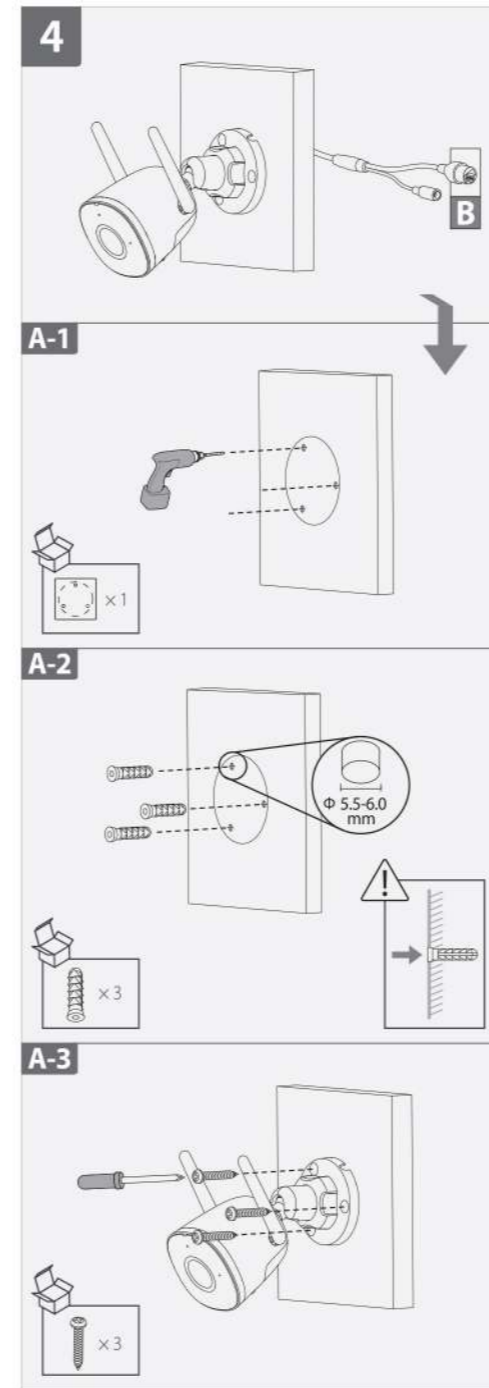
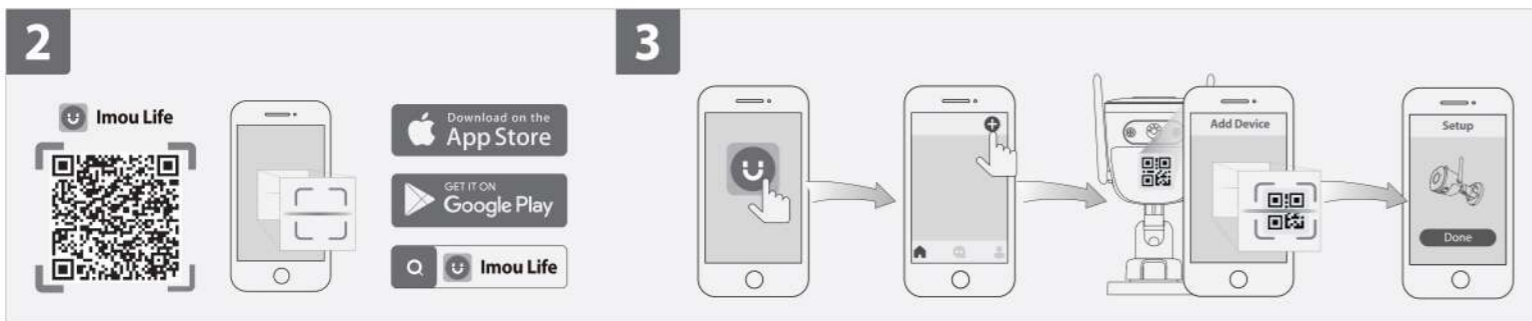
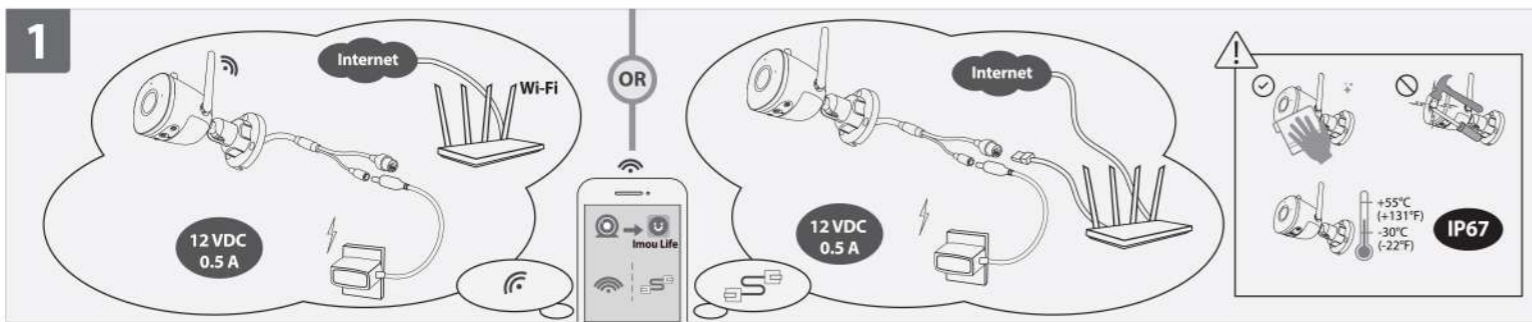
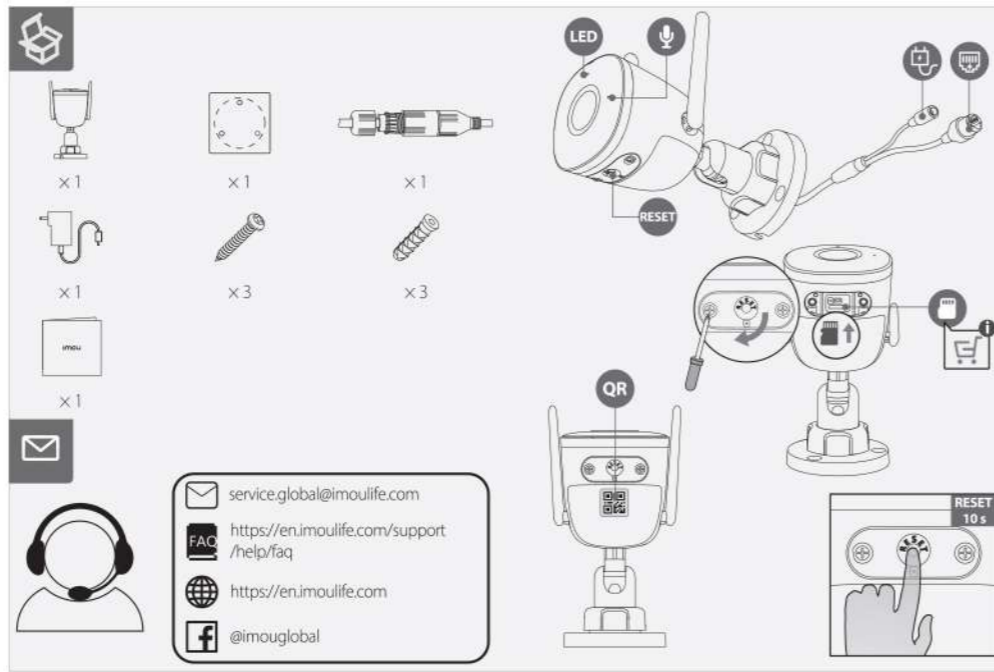
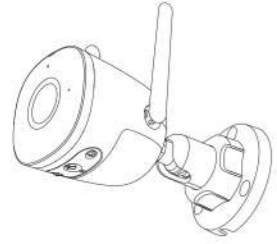


Imou

Quick Start Guide

V1.0.0



English

- 1 Power On the Camera**
Connect the camera to power. You can choose wireless or wired network connection (see part 1).
- 2 Get the Imou Life App**
Scan the QR code on part 2 or search for "Imou Life" to download and install the app. Create an account and log in.
- 3 Set Up the Camera**
Scan the QR code on the body of the device or on the cover of this guide with the app, and then follow on-screen instructions to complete the setup (see part 3).
- 4 Install the Camera**
Make sure the mounting surface is strong enough to hold three times the weight of the camera. For detailed installation process, please see part 4.

LED Status	Device Status	
Green	Flashing	Ready to set up the device
	Solid	Working properly
Red	Flashing	Network disconnected
	Solid	Failed to set up the device
Green & Red	Flashing	Booting
	Solid	Device malfunction
Green & Red	Alternating	Updating firmware
Off	Power off	Power off
	LED turned off	LED turned off

i If you need to reset the camera, press and hold the reset button for 10 s. The LED turns solid red when the camera is booting.