

RUTH LEE



FOR PROFESSIONALS WHO SAVE LIVES

TRAINING MANIKINS FOR
FIRE & RESCUE SERVICES

Gholami Trading Company



RUTH LEE™



DUTY RANGE TRAINING MANIKIN

FOR PROFESSIONALS WHO SAVE LIVES

Ruth Lee is a family business whose core values revolve around the care of our employees, service to our customers and uncompromising product quality. We are proud to serve YOU, the dedicated professionals who make such a valuable contribution to society.

We employ highly skilled people and source the most durable materials to ensure our products meet the highest international standards.

Our manikins are designed to represent the correct anatomic weight distribution of a real person, and we offer a range of different models to suit every conceivable scenario. This ensures that your training is as realistic and as effective as possible; preparing you for all eventualities.

LEARN MORE ABOUT OUR
EXTENSIVE RANGE OF
TRAINING MANIKINS,
BESPOKE BAGS,
OPERATIONAL
PRODUCTS AND FIRE
SIMULATION EQUIPMENT

Gholami Trading Company

07791021673

09171744793

Address: Bushehr - Bandar Delvar - Persian Gulf Pearl Commercial Complex - No. 75

DUTY RANGE TRAINING MANIKIN

IDEAL FOR THE FOLLOWING TRAINING SCENARIOS:

Confined space, Urban Search & Rescue (USAR), Road Traffic Collision (RTC), CBRN & general handling exercises. Our best selling manikin; commonly known as the 'Drill Dummy'!

SPECIAL MATERIALS:

Constructed from the same flame retardant material used in Police ballistic/stab vests, offering 4x the strength and abrasion resistance of 16oz canvas or P.V.C. (conforms to OEKO-TEX® Standard 100, BS EN ISO 12947-2 & 14116: 2008). High density polypropylene webbing (25mm rated to 207 Kg, 50mm rated to 440Kg).

FEATURES & BENEFITS:

- Anatomically correct weight distribution to give the 'feel' of an unconscious casualty.
- Strong webbing loop at the back allows easy handling, hauling aloft, storage and suspension for drying.
- Tough enough to withstand being buried under concrete or steel lintels, driven over by a 4x4 vehicle, or dropped from a 2nd floor window without damage.
- Water repellent material, making it suitable for wet or foul scenarios such as HAZMAT/CBRN.
- Soft body joints to eliminate the risk of pinch welts and bruising; common injuries when using plastic bodied manikins.

AVAILABLE WEIGHTS & SIZES:

DESCRIPTION	MODEL CODE	HEIGHT (M)	WEIGHT (KG)	NATO STOCK #
Baby	RLN5	0.7	5	4240-99-8581987
Toddler	RLN10	0.9	10	4240-99-0218800
Youth	RLN20	1.3	20	4240-99-2130513
20 Kg Adult	RLN20A	1.8	20	N/A
30 Kg Adult	RLN30	1.8	30	4240-99-8525913
50 kg Adult	RLN50	1.8	50	4240-99-9771707
70 Kg Adult	RLN70	1.8	70	4240-99-2416796
80 Kg Adult	RLN80	1.8	80	6910-99-858-3207
90 Kg Adult	RLN90	1.8	90	6910-99-850-7387

Note: Shorter adult versions (1.65m) also available in 30, 50 and 70 Kg weight.

*Manikins weighing over 50kg may have metal ballast as part of their construction. Please contact us for more information.

- An immobilisation/extrication collar can be fitted around the neck of our adult manikins to promote proper casualty care.
- Using shoutbox feature (optional extra) you can personalise a recorded message up to 60 seconds; eg "Help I can't feel my legs..." which can be periodically repeated.
- Comes complete with boots, which are easily replaced if damaged.

NOT SUITED FOR:

- Use in temperatures above 100°C or flashover scenarios – See our **Fire House** manikin.
- Use in water – See our **Water Rescue** range.

OPTIONAL EXTRAS:

- Tough drag protectors and overalls to greatly extend the life of your manikin.
- Shoutbox and hood to give your casualty the power of speech to add extra realism.
- Face mask and wig for a more human-like appearance.

EXTENSIVELY USED BY:

- All UK Fire & Rescue Services.
- The British Ministry of Defence (MOD).
- Police, Ambulance/EMS/HART teams.
- Health & Safety experts across various industries.
- Equivalent organisations across North & South America, Europe, Australia and Asia.



FOR PROFESSIONALS WHO SAVE LIVES



UPDATED:09.06.23



DUTY RANGE TRAINING MANIKIN

برای افراد حرفه ای که جان انسان را نجات می دهند

کار تخصصی راستلی مراقبت از کارمندان آتش نشانی و خدمات به مشتریان است

ما مفتخریم که به شما متخصصین متعهدی که چنین کمک ارزشمندی به جامعه میکنید خدمت میکنیم

ما افراد بسار ماهر را استخدام کرده ایم و با دوام ترین مواد را تهیه میکنیم

تا اطمینان حاصل کنیم که محصولات ما با بالاترین استانداردهای بین المللی مطابقت دارد

ادمک های آموزشی ما بر اساس اناتومیک بدن یک فرد واقعی طراحی شده اند و طیف وسیع از ادمکهای مختلف را برای مطابقت با هر سناریو

قابل تصویری ارائه میدهد این موضوع تضمین میکند که آموزش شما تا حد ممکن واقع بینانه و موثر است و شما را برای همه احتمالات آماده

میکند

بازرگانی غلامی

۰۷۷۹۱۰۲۱۶۷۳

۰۹۱۷۱۷۴۴۷۹۳

آدرس: بوشهر - بندر دلواری - مجتمع تجاری مروارید خلیج فارس - پلاک ۷۵

DUTY RANGE TRAINING MANIKIN

آدمک تمرینی آتش نشانی RUTHLEE

این مانکن به گونه ای سخت است که بتواند زیر کالاهای بتنی و فولادی و رانده شده توسط خودروهای سایز بزرگ یا سقوط از پنجره طبقه دوم بدون آسیب مقاومت کند .

پوشش روی این مانکن ها ضد آب بوده و برای سناریو های مرطوب و غیر تمیز مناسب میباشد

برای این که متخصص هنگام آموزش آسیب نبیند از مفاصل نرم استفاده شده است

این آدمک تا دمای ۱۰۰ درجه سانتی گراد مقاوم میباشد و به راحتی قابل استفاده در آب میباشد

مکان های استفاده شده این آدمک آموزشی

۱) کلیه خدمات آتشنشانی و نجات انگلستان

۲) وزارت دفاع بریتانیا

۳) تیم های پلیس و امبولانس

۴) کارشناس و بهداشت دائمی در صنایع .مختلف سازمان های مختلف در

شهرهای شمال و جنوب امریکا استرالیا و اروپا

پوشش لباسی این مانکن ها از مواد سخت بوده که دارای دوام بسیار بالا در طول استفاده در مجموعه می باشند.

این مانکن ها دارای مواد نگهدارنده هستند که طول عمر آن ها را افزایش میدهد.

در این مانکن ها کشش اعضای بدن مجاز بوده زیرا دارای استقامت و سفتی بسیاری هستند.

حرکات آدمک و اعضای بدن آن در طول تمرین همانند یک انسان واقعی باشد.

توزیع وزن اعضای بدن آدمک بصورت یکسان در سرتاسر آن می باشد که همانند یک انسان واقعی به نظر می رسد.

این آدمک ها انعطاف پذیر هستند و می توان به شکل های مختلف مانند (نشستن، دراز کشیدن، خم شدن و غیره) استفاده نمود.

این آدمک ها به طور واقع بینانه نقش یک مصدوم ناخودآگاه را شبیه سازی می کنند - (نمایش گر وزن یک انسان بی جان)

آدمک های موجود بر اساس قد و وزن

DESCRIPTION	MODEL CODE	HEIGHT (M)	WEIGHT (KG)	NATO STOCK #
Baby	RLN5	0.7	5	4240-99-8581987
Toddler	RLN10	0.9	10	4240-99-0218800
Youth	RLN20	1.3	20	4240-99-2130513
20 Kg Adult	RLN20A	1.8	20	N/A
30 Kg Adult	RLN30	1.8	30	4240-99-8525913
50 kg Adult	RLN50	1.8	50	4240-99-9771707
70 Kg Adult	RLN70	1.8	70	4240-99-2416796
80 Kg Adult	RLN80	1.8	80	6910-99-858-3207
90 Kg Adult	RLN90	1.8	90	6910-99-850-7387

Note: Shorter adult versions (1.65m) also available in 30, 50 and 70 Kg weight.

*Manikins weighing over 50kg may have metal ballast as part of their construction. Please contact us for more information.



FOR PROFESSIONALS WHO SAVE LIVES

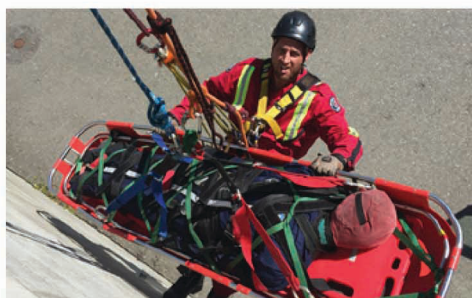


UPDATED:09.06.23

FIRE & RESCUE SERVICES FOR PROFESSIONALS WHO SAVE LIVES

Ruth Lee manikins are used throughout the world by fire and rescue professionals. They are tough enough for the fire service and military, and are weighted proportionately to be anatomically correct, for more realistic training.

We are confident you won't find a more durable manikin on the market and with a full range of dummies, designed for different training scenarios, we are sure we can provide you with the perfect training partner!



DUTY RANGE

Our best selling manikin and commonly known as the "Drill Dummy". It is ideal for a range of training scenarios including: Confined Space, Urban Search and Rescue (USAR), Road Traffic Collision (RTC), CBRN and general handling exercises.

CODE	DESCRIPTION	WEIGHT	HEIGHT	NATO STOCK NO
RLN5	BABY	5 Kg	0.7m	4240-99-8581987
RLN10	TODDLER	10Kg	0.9m	4240-99-0218800
RLN20	YOUTH	20Kg	1.3m	4240-99-2130513
RLN30	30Kg ADULT	30Kg	1.8m	4240-99-5158249
RLN50	50Kg ADULT	50Kg	1.8m	4240-99-5550594
RLN70	70Kg ADULT	70Kg	1.8m	4240-99-2416796
RLN90	90Kg ADULT	90Kg	1.8m	NA



FIRE HOUSE

This manikin is ideal for snatch rescue training and 'hot cell' training. Will withstand temperatures of around 160C at floor level (400C at ceiling).

CODE	DESCRIPTION	WEIGHT	HEIGHT	NATO STOCK NO
RLNFH10	TODDLER	10Kg	0.9m	NA
RLNFH20	YOUTH	20Kg	1.3m	NA
RLNFH30	30Kg ADULT	30Kg	1.8m	4240-99-5158249
RLNFH50	50Kg ADULT	50Kg	1.8m	4240-99-5550594
RLNFH70	70Kg ADULT	70Kg	1.8m	NA



MAN OVERBOARD

It is vital that effective MOB drills are conducted frequently with crew members on all vessels - these manikins have proven to be a vital tool in achieving that. This manikin can float at any angle between the vertical and horizontal by simply moving the foam pieces between the chest pockets and the legs, a process which takes seconds.

CODE	DESCRIPTION	WEIGHT	HEIGHT	NATO STOCK NO
RLNW20MO	YOUTH	20Kg	1.3m	NA
RLNWMO	ADULT	40Kg	1.8m	0472-99-7837372



FULL BODIED AIRWAY MANAGEMENT

Your team will be expected to carry our airway management skills in some difficult circumstances - not a warm, well-lit classroom! Introducing this manikin into your routine training will allow you to create more realistic scenarios and ensure your team are resilient.

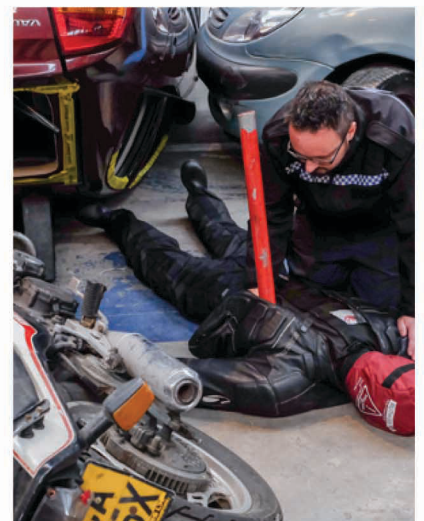
CODE	DESCRIPTION	WEIGHT	HEIGHT
RLNAWM	20KG ADULT WITHOUT TORSO	13Kg	1.8m
RLNAWMTOR	20KG ADULT WITH TORSO	20Kg	1.8m
RLNAWM50	50KG ADULT WITHOUT TORSO	43Kg	1.8m
RLNAWMTOR50	50KG ADULT WITH TORSO	50Kg	1.8m



MULTI TRAUMA

One of our more interesting manikins that can be used to simulate impalements or a partial or total loss of limb. It is an excellent choice for USAR or RTC (Road Traffic Collision) training and helps to promote proper casualty care -after all, if you handle him incorrectly, he could lose an arm!

CODE	DESCRIPTION	WEIGHT	HEIGHT	NATO STOCK NO
RLN30MT	30Kg ADULT	30Kg	1.8m	4210-99-2547551
RLN50MT	50Kg ADULT	50Kg	1.8m	NA
RLN70MT	70Kg ADULT	70Kg	1.8m	NA



WORKING AT HEIGHT

Specially designed for Working at Height training. This manikin is constructed to provide extra rigidity and reduce slumping when using a rescue harness.

CODE	DESCRIPTION	WEIGHT	HEIGHT	NATO STOCK NO
RLWAH30	30Kg ADULT	30Kg	1.8m	NA
RLWAH50	50Kg ADULT	50Kg	1.8m	NA
RLWAH70	70Kg ADULT	70Kg	1.8m	NA



BARIATRIC

Obesity is a growing problem in the Western world. Would you and your team be confident in extricating a heavier casualty in an emergency? With a 'light-weight' option available when bulk and not excessive weight is required.

CODE	DESCRIPTION	WEIGHT	HEIGHT	NATO STOCK NO
RLN90B	90KG ADULT	90Kg	1.8m	NA
RLN180	180KG ADULT	180Kg	1.8m	NA
RLN260	260KG ADULT	260Kg	1.8m	NA



WATER-FILLABLE BARIATRIC SUIT

A NEW innovation for Bariatric training. Our Water-fillable Bariatric Suit fits over any Duty Adult manikin and allows you to add up to 150kgs of additional weight. When empty it is light enough for one person to carry easily.

CODE	DESCRIPTION
RLBCS	WATER-FILLABLE BARIATRIC SUIT



بازرگانی غلامی

۰۷۷۹۱۰۲۱۶۷۳

۰۹۱۷۱۷۴۴۷۹۳

آدرس؛ بوشهر - بندر دلواری - مجتمع تجاری مروارید خلیج فارس - پلاک ۷۵



Edited: 11.12.17