

2011 INTERNATIONAL
Safety Footwear Catalog



WORK IS OUR WORK™



For more than a century, workers have headed to demanding job sites feeling comfortable and confident with the knowledge that their feet were protected by Red Wing Shoes. Today, our full line of personal protective equipment provides this same peace of mind on life-threatening job sites across the globe. So whether it is footwear, garments or accessories, rest assured that the Red Wing logo stands for safety like no other.

Whenever safety is critical, Red Wing has you covered.™

Table Of Contents

History of Innovation and Quality.....	4-5
Craftsmanship and Purpose-Built Footwear.....	6-7
Complete PPE solutions.....	8-9
New for 2011	10

FOOTWEAR

ASTM.....	11-25
INSULATED.....	26-27
WOMEN'S	28-30
SINGAPORE.....	31
EN	32-35
SOFT TOE	36-38

ACCESSORIES AND CARE PRODUCTS

ACCESSORIES.....	39-41
CARE PRODUCTS.....	42-43

REFERENCE

Footwear Construction	44-45
Footwear Standards.....	45-46
Comparison Chart of Footwear Standards.....	47
Limited Warranty	48
Catalog Icon and Logo Key.....	49
Contact Information and Size Conversion Chart.....	50

PRODUCT INDEX.....	51
---------------------------	-----------

The Red Wing Shoe Company



Charles Beckman founded Red Wing Shoes in 1905.

A CENTURY OF EXCELLENCE

The hard-working men and women in the American heartland had few viable footwear options a century ago. Industries such as farming, logging and mining required a boot that offered premium protection from the rigors of the job, but these rugged shoes were rarely comfortable. Charles Beckman, a shoe merchant in Red Wing, realized this and set out to create a better boot. In 1905, he did, and Red Wing Shoes was born.

Since those early days, we have never wavered in our commitment to outfit our hard-working customers with premium quality products that consistently perform. Today, Red Wing Shoes is the world's foremost choice for safety, durability and comfort.

A LEGACY OF QUALITY

J.R. Sweasy began his career in the shoe business the same year Red Wing Shoe Company was founded. Less than a decade later, he joined the company to continue the tradition established by founder Charles Beckman. J.R.'s personal commitment to quality was evident in everything he did. And under his guidance he built quality at the company—like the shoes themselves—layer by layer.

J.R.'s legacy of quality has endured in the generations since, and today it is one of our greatest assets. Customers of Red Wing Shoes know they can depend on our personal protective equipment to deliver under life-threatening conditions, and we take this responsibility very seriously. That's why all our products must meet the superior Red Wing standard of quality and durability by undergoing rigorous, industry-leading testing at our global quality and testing labs.



Red Wing Shoes, a legacy of quality that has endured for generations.

1905-2011



Red Wing Shoes are handcrafted with attention to detail.

SAFETY FROM THE GROUND UP

At Red Wing Shoes, we take great pride in offering only the highest quality products to protect hard-working individuals in more than 80 different countries. Each item we sell is manufactured under stringent Red Wing quality standards to withstand even the most demanding work environments. This ensures that each personal protective product we make meets the most stringent quality standards, and even more importantly, our customers' needs. We believe our customers wouldn't expect anything less from Red Wing.

DURABLE COMFORT DAILY

It's no easy task to craft leather that's tough enough to provide superior protection, and yet is comfortable enough to wear all day in demanding conditions. But at Red Wing, we've met this challenge for more than a century. Our master tanners use a watchful eye and sensitive feel to produce leather that is the signature component of Red Wing footwear. Our durable leather uppers provide superior protection and a great look and feel; while our leather insoles mold to each wearer's foot for superior comfort and fit. There's little question about it—Red Wing leather proves its worth day after hard-working day.



*Red Wing leather production,
Red Wing, Minnesota, USA.*



*Whenever safety is critical,
Red Wing has you covered.™*

Red Wing boots combine the very best components with superior craftsmanship.

Time-Tested Craftsmanship

Handcrafted Red Wing Shoe Company Leather

Building the best work safety footwear starts with the best leather. For more than a century, the master tanners at our own tannery have practiced their craft and honed their skills in Red Wing, Minnesota. Our SB Foot Tanning Co. is located near the banks of the Mississippi River, just down the road from the Plant 2 factory. The leather they craft possesses a natural beauty and unmatched durability.

Crafting a raw, natural material into a perfect piece of finished leather is no easy task. To start with, our tannery uses only hides from U.S. raised cattle. They then select only the hides with minimal surface imperfections, because a flaw in the hide could eventually compromise the quality of our footwear.



As every hide is unique, it takes a watchful eye and a sensitive feel for the leather, skills that only come from years of experience.

Our durable leather uppers provide superior protection, while our leather insoles mold to an individual's foot for superior comfort and fit. Our leathers are tested in our own laboratory to make sure they will meet the demands of the toughest work site.

Red Wing Shoe Company Leathers are the signature component of our Made in the USA styles of Red Wing footwear. These exclusive leathers are the most important material in building the work boots which make Red Wing famous around the world.



Purpose-Built Innovation

Research and development have always been part of the spirit of innovation at Red Wing Shoe Company. Before a boot hits the production floor, we consider how it will be used and who will be using it. Every component has been carefully chosen to meet a specific purpose. Just like the job you do, our boots fit your need to help you perform your best under the most demanding conditions. Throughout the design process, we select the best materials to meet our strict performance criteria. And long hours of field testing confirm we've got it right.

Look for these innovative technologies, purpose-built into select Red Wing footwear styles:



The standard for lightweight insulation.



In the most premium boots, the ultimate layer of breathable waterproof protection.



Red Wing's exclusive 3-part waterproof system.



Single density urethane sole designed to provide abrasion resistance, cut resistance, traction, oil and chemical resistance, and comfort.



Dual density urethane sole designed to provide top performance in traction, abrasion resistance, cut resistance, oil and chemical resistance, and maximum comfort.



Advanced 4-layer construction designed to ventilate and manage moisture, absorb impact, stabilize heel, support arch, and cushion foot.



A removable footbed designed to help keep feet cool and dry all day. Dual density construction dissipates shock to help keep your feet from tiring.



Dramatically reduces underfoot pressure, blocking painful pressure points by redistributing them across the foot while minimizing shock.



ForceShield™ internal metguard and ankle protection system meets ASTM F2413-05 metatarsal standards for impact protection.



Non-metallic puncture resistant midsoles manufactured from high strength woven fibers.



Offers excellent traction and high abrasion resistance in a multitude of environments.



Steel, Non-Metallic, and Aluminum safety toes. Internal and external metatarsal protection.

Full descriptions of these technologies can be found on page 49 of this catalog.



KING TOE®

King Toe lets your feet stretch out and work. It's like a spacious garage for your feet, with 44% more toe room than our standard steel toe work boots. This toe has headroom that'll go straight to your feet! Look for the King Toe logo on select styles throughout this catalog.



Wherever safety is critical, Red Wing has you covered.

For more than a century, workers have headed to demanding and dangerous job sites feeling comfortable, confident and secure in the knowledge that their feet were protected by Red Wing boots. Today, our complete line of Red Wing industrial workwear provides this same peace of mind on dangerous job sites across the globe. So, whether you need workwear, footwear or accessories, you can depend on a century of experience – depend on Red Wing.





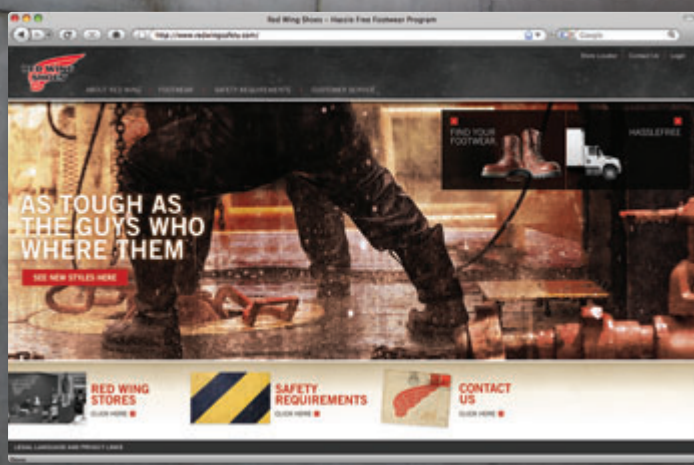
2011 INDUSTRIAL WORKWEAR CATALOG



Whenever safety is critical,
Red Wing has you covered™

Red Wing Shoes Industrial Workwear Catalog

Ask your sales representative for a copy of our Industrial Workwear Catalog—Red Wing's complete PPE solution.



Safety Website

This website contains all the details you need to know about industrial workwear and footwear products from Red Wing.

redwingsafety.com

Customized industrial garments and PPE programs are available. Call us for more information.

Innovation for 2011

Welcome to the future of high performance lacing—our new 8" waterproof Cordura work boot features the patented Boa® lacing system.

This technology is utilized on the following products:

2491 (shown below and on page 22)

3282 (page 35)

4216 (page 21)

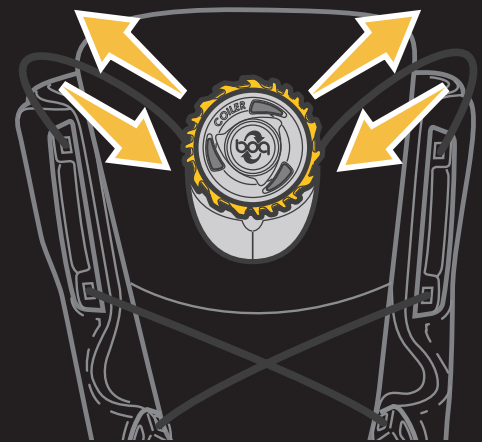


What is Boa® technology?

New Boa lacing technology makes lacing up as quick and easy as turning a dial. One click of the reel releases laces for instant loosening.

These boots are the perfect choice for workers who require quick on/off convenience. Once the dial is adjusted, lace tension is locked in.

The laces, made of air-craft grade stainless steel, are stronger per gram than tank armor. The reel and laces are guaranteed for the life of the boot.



With a simple twist of the Boa® dial, laces come together evenly for a quick, comfortable fit. The Boa® reel allows customers to dial in the perfect lace tension with no pressure points.

A full-page photograph of a worker in a red protective suit and white hard hat carrying a large, light-colored pipe over his shoulder. The worker is walking on a gravel surface. In the background, there are several large white and orange storage tanks and snow-capped mountains under a clear blue sky. A dark grey horizontal bar is positioned in the upper right quadrant, containing the text 'ASTM' in white.

ASTM



8701 Red Wing Men's Oxford



MADE IN THE USA W/IMPORTED MATERIALS

- Full Grain, Water Resistant Black Endura Leather
- Cement Construction
- Steel Shank
- SD Cushion Footbed
- Oil/Slip Resistant Grip-Tec® Sole

Rating: ASTM F 2413-05, M I/75 C/75, SD
Care: Leather Protector, Shoe Creme
Sizes: D 7-12,13,14 EE 6-12 EEE 7-12

Slip Resistance	Best
Oil/Gas	Best
Chemicals	Good
Abrasions	Better
Non-Marking	Yes



Grip-Tec®



4407 Red Wing Men's Oxford



MADE IN THE USA

- Full Grain, Water Resistant Brown Velva Boomer Leather
- SuperSole® Welt Construction
- Fiberglass Shank
- Removable ComfortForce® Footbed
- Oil Resistant Odyssey SuperSole®

Rating: ASTM F 2413-05, M I/75 C/75, EH
Care: Leather Protector, Boot Oil
Sizes: D 7-12,13,14 E 6-12,13 EEE 8-12,13

Slip Resistance	Good
Oil/Gas	Best
Chemicals	Better
Abrasions	Better
Non-Marking	Yes



Odyssey SuperSole®



4408 Red Wing Men's Oxford



MADE IN THE USA

- Full Grain, Water Resistant Black Star Leather
- SuperSole® Welt Construction
- Fiberglass Shank
- Removable ComfortForce® Footbed
- Oil Resistant Odyssey SuperSole®

Rating: ASTM F 2413-05, M I/75 C/75, EH
Care: Leather Protector, Shoe Creme
Sizes: D 7-12,13,14,15 EE 8-12 EEE 8-12

Slip Resistance	Good
Oil/Gas	Best
Chemicals	Better
Abrasions	Better
Non-Marking	Yes



Odyssey SuperSole®



6602 Red Wing Men's Oxford



MADE IN THE USA W/IMPORTED MATERIALS

- Full Grain, Clay Mustang Leather
- Cement Bond Construction
- SD Foil/Felt Footbed
- Oil/Slip Resistant Urethane Wedge Sole

Rating: ASTM F 2413-05, M I/75 C/75, SD
Care: Leather Protector, Shoe Creme
Sizes: EE 7-12,13 EEE 6-12,13

Slip Resistance	Best
Oil/Gas	Best
Chemicals	Good
Abrasions	Good
Non-Marking	Yes



Urethane Wedge



6604 Red Wing Men's Oxford



MADE IN THE USA W/IMPORTED MATERIALS

- Full Grain, Black Mustang Leather
- Cement Bond Construction
- SD Foil/Felt Footbed
- Oil/Slip Resistant Urethane Wedge Sole

Rating: ASTM F 2413-05, M I/75 C/75, SD
Care: Leather Protector, Shoe Creme
Sizes: EE 6-12,13,14 EEE 6-12,13,14

Slip Resistance	Best
Oil/Gas	Best
Chemicals	Good
Abrasions	Good
Non-Marking	Yes



Urethane Wedge

MADE IN THE **USA** W/IMPORTED MATERIALS

6607 Red Wing Men's Slip-On



- Finished Split Black Duty Leather
 - Cement Bond Construction
 - Oil/Slip Resistant Urethane Wedge Sole
- Rating: ASTM F 2413-05, M I/75 C/75, SD
 Care: Leather Protector, Shoe Creme
 Sizes: EE 6-12,13

Slip Resistance	Best
Oil/Gas	Best
Chemicals	Good
Abrasions	Good
Non-Marking	Yes



NEW

8204 Red Wing Men's Oxford



MADE IN THE **USA** W/IMPORTED MATERIALS



- Full Grain, Black Leather
 - Cement Construction
 - Leather Covered Foam Footbed
 - Oil/Slip Resistant Urethane Wedge Sole
- Rating: ASTM F 2413-05, M I/75 C/75, SD
 Care: Shoe Creme
 Sizes: EE 6-12,13,14,15

Slip Resistance	Best
Oil/Gas	Best
Chemicals	Good
Abrasions	Good
Non-Marking	Yes



NEW

8207 Red Wing Men's Oxford



MADE IN THE **USA** W/IMPORTED MATERIALS



- Full Grain, Black Leather
 - Cement Construction
 - Leather Covered Foam Footbed
 - Oil/Slip Resistant Urethane Wedge Sole
- Rating: ASTM F 2413-05, M I/75 C/75, SD
 Care: Shoe Creme
 Sizes: EE 6-12,13,14,15

Slip Resistance	Best
Oil/Gas	Best
Chemicals	Good
Abrasions	Good
Non-Marking	Yes



6646 Red Wing Men's Slip-On



ASSEMBLED IN THE **USA** W/IMPORTED COMPONENTS



- Full Grain, Waterproof Black Rio Grande Leather
 - Strobel Stitched/Cement Construction
 - H-Tech Stabilizer Shank
 - Removable Leather Covered Polyurethane Footbed
 - Oil Resistant TPU/PU Omni Comfort Sole
- Rating: ASTM F 2413-05, M I/75 C/75, EH
 Care: Shoe Creme, Leather Protector
 Sizes: D 7-12,13,14 EE 7-12,13

Slip Resistance	Better
Oil/Gas	Best
Chemicals	Best
Abrasions	Best
Non-Marking	Yes



6647 Red Wing Men's Slip-On



ASSEMBLED IN THE **USA** W/IMPORTED COMPONENTS



- Full Grain, Waterproof Dark Brown Worn Saddle Leather
 - Strobel Stitched/Cement Construction
 - H-Tech Stabilizer Shank
 - Removable Leather Covered Polyurethane Footbed
 - Oil Resistant TPU/PU Omni Comfort Sole
- Rating: ASTM F 2413-05, M I/75 C/75, EH
 Care: Shoe Creme, Leather Protector
 Sizes: D 7-12,13,14 EE 7-12,13

Slip Resistance	Better
Oil/Gas	Best
Chemicals	Best
Abrasions	Best
Non-Marking	Yes



+1.651.388.8211



6633 Red Wing Men's Oxford

ST **EH**

MADE IN CHINA

- Full Grain, Water Resistant Black Yukon Leather
- Direct Attach Construction
- TPU Shank
- Nylon Covered Polyurethane Footbed
- Oil Resistant Dual Density TPU/PU Galaxy Sole

Rating: ASTM F 2413-05, M I/75 C/75, EH
Care: Leather Protector, Shoe Creme
Sizes: D 7-12,13,14,15 EE 8-12,13,14

Slip Resistance	Better
Oil/Gas	Best
Chemicals	Best
Abrasions	Best
Non-Marking	Yes



Dual Density TPU/PU Galaxy

KING TOE™



6634 Red Wing Men's Oxford

ST **EH**

MADE IN CHINA

- Full Grain, Hazelnut Tramper Leather
- Direct Attach Construction
- TPU Shank
- Nylon Covered Polyurethane Footbed
- Oil Resistant Dual Density TPU/PU Galaxy Sole

Rating: ASTM F 2413-05, M I/75 C/75, EH
Care: Leather Protector
Sizes: B 10-12,13,14 D 7-12,13,14,15 EE 8-12,13,14

Slip Resistance	Better
Oil/Gas	Best
Chemicals	Best
Abrasions	Best
Non-Marking	Yes



Dual Density TPU/PU Galaxy

KING TOE™



6700 Red Wing Men's Slip-On

AT ⚡

MADE IN CHINA

- Full Grain Black Star Leather
- Opanka Construction
- TPU Shank
- Nylon Covered Polyurethane SD Footbed
- Oil/Slip Resistant Rubber Forager Sole

Rating: ASTM F 2413-05, M I/75 C/75, SD
Care: Leather Protector, Shoe Creme
Sizes: B 10-12,13,14 D 7-12,13,14,15 EE 8-12,13

Slip Resistance	Best
Oil/Gas	Best
Chemicals	Best
Abrasions	Best
Non-Marking	No



Forager

6702 Red Wing Men's Slip-On

AT ⚡

MADE IN CHINA



- Full Grain, Dark Brown Worn Saddle Leather
- Opanka Construction
- TPU Shank
- Nylon Covered Polyurethane SD Footbed
- Oil/Slip Resistant Rubber Forager Sole

Rating: ASTM F 2413-05, M I/75 C/75, SD
Care: Leather Protector, Shoe Creme
Sizes: B 10-12,13,14 D 7-12,13,14,15 EE 8-12,13

Slip Resistance	Best
Oil/Gas	Best
Chemicals	Better
Abrasions	Best
Non-Marking	No



Forager

6703 Red Wing Men's Oxford

AT ⚡

MADE IN CHINA



- Full Grain Black Star Leather
- Opanka Construction
- TPU Shank
- Nylon Covered Polyurethane SD Footbed
- Oil/Slip Resistant Rubber Forager Sole

Rating: ASTM F 2413-05, M I/75 C/75, SD
Care: Leather Protector, Shoe Creme
Sizes: B 10-12,13,14 D 7-12,13,14,15 EE 8-12,13 H 8-12,13

Slip Resistance	Best
Oil/Gas	Best
Chemicals	Best
Abrasions	Best
Non-Marking	No



Forager



6704 Red Wing Men's Oxford



MADE IN CHINA

- Full Grain, Dark Brown Worn Saddle Leather
 - Opanka Construction
 - TPU Shank
 - Nylon Covered Polyurethane SD Footbed
 - Oil/Slip Resistant Rubber Forager Sole
- Rating: ASTM F 2413-05, M I/75 C/75, SD
 Care: Leather Protector, Shoe Creme
 Sizes: B 10-12,13,14 D 7-12,13,14,15 EE 8-12,13 H 8-12,13

Slip Resistance	Best
Oil/Gas	Best
Chemicals	Better
Abrasions	Best
Non-Marking	No



5503 WORX Men's Slip-On



MADE IN CHINA

- Full Grain, Nubuck Brown Leather
 - Cement Construction
 - Steel Shank
 - Removable Polyurethane-SD Footbed
 - Oil/Slip Resistant SSRT Sole
- Rating: ASTM F 2413-05, M I/75 C/75, SD
 Care: Leather Protector
 Sizes: M 6-12,13,14 W 7-12,13,14 WW 8-12,13

Slip Resistance	Best
Oil/Gas	Best
Chemicals	Best
Abrasions	Best
Non-Marking	Yes



5504 WORX Men's Slip-On



MADE IN CHINA

- Full Grain Black Leather
 - Cement Construction
 - Non-Metallic Shank
 - Removable Polyurethane-SD Footbed
 - Oil/Slip Resistant SSRT Diamond Sole
- Rating: ASTM F 2413-05, M I/75 C/75, SD
 Care: Leather Protector, Polish
 Sizes: M 6-12,13,14 WW 8-12,13

Slip Resistance	Best
Oil/Gas	Best
Chemicals	Best
Abrasions	Best
Non-Marking	Yes



8281 WORX Men's Oxford



MADE IN CHINA

- Full Grain Black Leather
 - Direct Attach Welt Construction
 - Steel Shank
 - Removable EVA Footbed
 - Oil Resistant ENDURANCE Arrowhead Sole
- Rating: ASTM F 2413-05, M I/75 C/75, EH, PR
 Care: Shoe Creme
 Sizes: EEE 6-12,13,14

Slip Resistance	Good
Oil/Gas	Best
Chemicals	Best
Abrasions	Best
Non-Marking	Yes



8291 WORX Men's Oxford



MADE IN CHINA

- Full Grain Black Leather
 - Direct Attach Welt Construction
 - Steel Shank
 - Removable EVA Footbed
 - Oil Resistant ENDURANCE Arrowhead Sole
- Rating: ASTM F 2413-05, I/75 C/75, EH
 Care: Shoe Creme
 Sizes: EEE 6-12,13

Slip Resistance	Good
Oil/Gas	Best
Chemicals	Best
Abrasions	Best
Non-Marking	Yes



+1.651.388.8211



8294 WORX Men's Oxford

ST EH

MADE IN CHINA

- Full Grain Brown Leather
- Direct Attach Welt Construction
- Steel Shank
- Removable EVA Footbed
- Oil Resistant ENDURANCE Arrowhead Sole

Rating: ASTM F 2413-05, I/75 C/75, EH
Care: Shoe Creme
Sizes: EEE 6-12,13,14

Slip Resistance	Good
Oil/Gas	Best
Chemicals	Best
Abrasions	Best
Non-Marking	Yes



ENDURANCE Arrowhead



5411 WORX Men's Oxford

ST ⚡

MADE IN CHINA

- Full Grain, Tumbled Black Leather
- Cement Construction
- Steel Shank
- Removable Polyurethane-SD Footbed
- Oil/Slip Resistant Dual Density PU Crosscut Wedge Sole

Rating: ASTM F 2413-05, M I/75 C/75, SD
Care: Leather Protector, Polish
Sizes: M 7-12,13,14 W 7-12,13 WW 8-12,13

Slip Resistance	Best
Oil/Gas	Best
Chemicals	Best
Abrasions	Best
Non-Marking	Yes



Crosscut Wedge



6550 WORX Men's Oxford

NT EH

MADE IN CHINA

- PU-Coated Black Leather
- Cement Construction
- Non-Metallic Shank
- Removable Polyurethane Footbed
- Oil/Slip Resistant SSRT Diamond Sole

Rating: ASTM F 2413-05, M I/75 C/75, EH
Care: Leather Protector, Polish
Sizes: M 7-12,13,14,15 W 7-12,13,14,15 WW 8-12,13

Slip Resistance	Best
Oil/Gas	Best
Chemicals	Best
Abrasions	Best
Non-Marking	Yes



SSRT Diamond



6667 Red Wing Men's Hiker Boot

ST EH ⚡

ASSEMBLED IN THE **USA** W/IMPORTED COMPONENTS

- Full Grain, Waterproof Cloud Burst Oil Nubuck Leather
- Strobel Stitched/Cement Construction
- TC-Tech Shank
- Removable Nylon Covered Polyurethane Footbed
- Oil/Slip Resistant Extensity™ Rubber Sole

Rating: ASTM F 2413-05, M I/75 C/75, EH
Care: NaturSeal®, Silicone, Leather Protector
Sizes: EE 6-12,13,14

Slip Resistance	Best
Oil/Gas	Best
Chemicals	Best
Abrasions	Best
Non-Marking	Yes



Extensity™ Rubber



6668 Red Wing Men's Hiker Boot

ST EH ⚡

ASSEMBLED IN THE **USA** W/IMPORTED COMPONENTS

- Full Grain, Waterproof Cloud Burst Brown Leather
- Strobel Stitched/Cement Construction
- TC-Tech Shank
- Removable Nylon Covered Polyurethane Footbed
- Oil/Slip Resistant Extensity™ Rubber Sole

Rating: ASTM F 2413-05, M I/75 C/75, EH
Care: NaturSeal®, Shoe Creme, Leather Protector
Sizes: EE 6.5-12,13,14

Slip Resistance	Best
Oil/Gas	Best
Chemicals	Best
Abrasions	Best
Non-Marking	Yes



Extensity™ Rubber



redwingsafety.com



Steel Toe
Casco de Acero



Non-Metallic Toe
Casco No Metálico



Aluminum Toe
Casco de Aluminio



Electrical Hazard
Di-Eléctrico



Puncture Resistant
Resistente a las Perforaciones



6681 Red Wing Men's Hiker Boot

ST EH

ASSEMBLED IN THE USA W/IMPORTED COMPONENTS

- Full Grain, Waterproof Red Roan Leather
 - Strobel Stitched/Cement Construction
 - TC-Tech Shank
 - Removable Nylon Covered Polyurethane Footbed
 - Oil/Slip Resistant Extensity™ Rubber Sole
- Rating: ASTM F 2413-05, M I/75 C/75, EH
 Care: NaturSeal®, Shoe Creme, Leather Protector
 Sizes: D 7-12,13 EE 6-12,13,14 H 8-12,13



Slip Resistance	Best
Oil/Gas	Best
Chemicals	Best
Abrasions	Best
Non-Marking	Yes



Extensity™ Rubber



6682 Red Wing Men's Hiker Boot

ST EH

ASSEMBLED IN THE USA W/IMPORTED COMPONENTS

- Waterproof, Nubuck Sandstone Leather
 - Strobel Stitched/Cement Construction
 - Removable Nylon Covered Polyurethane Footbed
 - Oil/Slip Resistant Extensity™ Rubber Sole
- Rating: ASTM F 2413-05, M I/75 C/75, EH
 Care: NaturSeal®, Leather Protector
 Sizes: EE 6-12,13,14



Slip Resistance	Best
Oil/Gas	Best
Chemicals	Best
Abrasions	Best
Non-Marking	Yes



Extensity™ Rubber



6690 Red Wing Men's Hiker Boot

AT EH

MADE IN CHINA

- Full Grain, Waterproof Black Star Leather
 - Cement Construction
 - Steel Shank
 - Nylon Covered Polyurethane Footbed
 - Oil/Slip Resistant Vibram Summit TC-4 Sole
- Rating: ASTM F 2413-05, M I/75 C/75, EH
 Care: NaturSeal®, Leather Protector
 Sizes: D 7-12,13,14,15 EE 8-12,13,14



Slip Resistance	Best
Oil/Gas	Best
Chemicals	Best
Abrasions	Best
Non-Marking	Yes



Vibram® Summit TC-4



6674 Red Wing Men's Hiker Boot

AT EH

MADE IN CHINA

- Full Grain, Waterproof Hazelnut Trampler Leather
 - Cement Construction
 - Steel Shank
 - Nylon Covered Polyurethane Footbed
 - Oil/Slip Resistant Vibram® Summit TC-4 Sole
- Rating: ASTM F 2413-05, M I/75 C/75, EH
 Care: NaturSeal®, Leather Protector
 Sizes: D 7-12,13,14,15 EE 8-12,13,14



Slip Resistance	Best
Oil/Gas	Best
Chemicals	Best
Abrasions	Best
Non-Marking	Yes



Vibram® Summit TC-4



6670 Red Wing Men's Hiker Boot

ST EH

MADE IN CHINA

- Waterproof Gray Suede Leather
 - Cement Construction
 - Steel Shank
 - Removable EVA Footbed
 - Oil/Slip Resistant Rubber/EVA Xplorer Sole
- Rating: ASTM F 2413-05, M I/75 C/75, EH
 Care: NaturSeal®, Leather Protector
 Sizes: D 8-12,13,14 EE 8-12,13



Slip Resistance	Best
Oil/Gas	Best
Chemicals	Best
Abrasions	Better
Non-Marking	Yes



Rubber/EVA Xplorer

+1.651.388.8211



8212 Red Wing Men's 5-inch Boot

ST PR

MADE IN THE **USA**

- Full Grain Brown Leather
- SuperSole® Welt Construction
- Fiberglass Shank
- Oil Resistant Mini Lug SuperSole®

Rating: ASTM F 2413-05, M I/75 C/75, PR
Care: Leather Protector
Sizes: EE 6-12,13 EEE 6-12,13



Slip Resistance	Good
Oil/Gas	Best
Chemicals	Better
Abrasions	Better
Non-Marking	Yes



Mini Lug SuperSole®



8215 Red Wing Men's 5-inch Boot

ST EH

MADE IN THE **USA**

- Full Grain Brown Leather
- SuperSole® Welt Construction
- Fiberglass Shank
- Oil Resistant Mini Lug SuperSole®

Rating: ASTM F 2413-05, M I/75 C/75, EH
Care: Leather Protector
Sizes: EE 6-12,13 EEE 6-12,13



Slip Resistance	Good
Oil/Gas	Best
Chemicals	Better
Abrasions	Better
Non-Marking	Yes



Mini Lug SuperSole®



8249 Red Wing Men's 6-inch Boot

ST EH

MADE IN THE **USA**

- Full Grain, Water Resistant Brown Chrome Leather
- SuperSole® Welt Construction
- Fiberglass Shank
- Oil Resistant Mini Lug SuperSole®

Rating: ASTM F 2413-05, M I/75 C/75, EH
Care: Boot Oil, Leather Protector
Sizes: E 7-12,13 EEE 8-12



Slip Resistance	Good
Oil/Gas	Best
Chemicals	Better
Abrasions	Better
Non-Marking	Yes



Mini Lug SuperSole®



2245 Red Wing Men's 6-inch Boot

ST

MADE IN THE **USA**

- Full Grain, Water Resistant Mahogany Original Leather
- SuperSole® Welt Construction
- Steel Shank
- Oil Resistant Diamond Lug SuperSole®

Rating: ASTM F 2413-05, M I/75 C/75
Care: Boot Oil, Leather Protector
Sizes: B 9-12,13,14 D 7-12,13,14,15,16 E 8-12,13
EE 8-12,13 EEE 7-12,13,14,15,16



Slip Resistance	Better
Oil/Gas	Best
Chemicals	Better
Abrasions	Better
Non-Marking	Yes



Diamond Lug SuperSole®



2226 Red Wing Men's 6-inch Boot

ST EH

MADE IN THE **USA** W/IMPORTED MATERIALS

- Full Grain, Brown Turbo Vegas Leather
- SuperSole® Welt Construction
- Fiberglass Shank
- Removable RedBed™ Footbed
- Oil Resistant Horizon™ SuperSole®

Rating: ASTM F 2413-05, M I/75 C/75, EH
Care: Boot Oil, Leather Protector
Sizes: B 9-12,13,14,15 D 6-12,13,14,15,16 E 8-12,13
EE 6-12,13,14,15 H 8-12,13



Slip Resistance	Good
Oil/Gas	Best
Chemicals	Better
Abrasions	Better
Non-Marking	Yes



Horizon™ SuperSole®

redwingsafety.com



2223 Red Wing Men's 6-inch Boot

ST EH

MADE IN THE **USA** W/IMPORTED MATERIALS

- Full Grain, Black Turbo Vegas Leather
 - SuperSole® Welt Construction
 - Fiberglass Shank
 - Removable RedBed™ Footbed
 - Oil Resistant Horizon™ SuperSole®
- Rating: ASTM F 2413-05, M I/75 C/75, EH
 Care: Boot Oil, Leather Protector, Shoe Creme
 Sizes: B 9-12,13,14 D 7-12,13,14,15 EE 7-12,13,14,15 H 8-12,13



Slip Resistance	Good
Oil/Gas	Best
Chemicals	Better
Abrasions	Better
Non-Marking	Yes



2234 Red Wing Men's 6-inch Boot

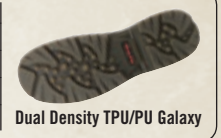
NT EH

MADE IN CHINA

- Full Grain, Water Resistant Black Yukon Leather
 - Direct Attach Construction
 - TPU Shank
 - Nylon Covered Polyurethane Footbed
 - Oil Resistant Dual Density TPU/PU Galaxy Sole
- Rating: ASTM F 2413-05, M I/75 C/75, EH
 Care: Leather Protector, Shoe Creme
 Sizes: D 7-12,13,14,15 EE 8-12,13,14 H 8-12,13,14

KING TOE

Slip Resistance	Better
Oil/Gas	Best
Chemicals	Best
Abrasions	Best
Non-Marking	Yes



2235 Red Wing Men's 6-inch Boot

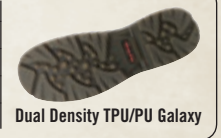
NT EH

MADE IN CHINA

- Full Grain, Poplar Frontier Leather
 - Direct Attach Construction
 - TPU Shank
 - Nylon Covered Polyurethane Footbed
 - Oil Resistant Dual Density TPU/PU Galaxy Sole
- Rating: ASTM F 2413-05, M I/75 C/75, EH
 Care: Leather Protector
 Sizes: B 9-12,13,14,15 D 6-12,13,14,15,16 EE 7-12,13,14 H 8-12,13,14



Slip Resistance	Better
Oil/Gas	Best
Chemicals	Best
Abrasions	Best
Non-Marking	Yes



4206 Red Wing Men's 6-inch Boot

ST EH

MADE IN THE **USA**

- Full Grain, Calico Brawny Leather
 - Dual Density SuperSole® Welt Construction
 - Fiberglass Shank
 - ComfortForce® Footbed
 - Oil/Slip Resistant Mini Lug SuperSole® 2.0
- Rating: ASTM F 2413-05, M I/75 C/75, EH
 Care: Boot Oil, Leather Protector
 Sizes: B 9-12,13,14 D 7-12,13,14,15 EE 7-12,13,14



Slip Resistance	Best
Oil/Gas	Best
Chemicals	Best
Abrasions	Best
Non-Marking	Yes



MADE TO ORDER



5445 WORX Men's 6-inch Boot

ST EH

MADE IN CHINA

- Full Grain, Oil Tanned Brown Leather
 - Direct Attach Welt Construction
 - Steel Shank
 - Removable Polyurethane Footbed
 - Oil Resistant ENDURANCE Arrowhead Sole
- Rating: ASTM F 2413-05, M I/75 C/75, EH
 Care: Boot Oil, Leather Protector
 Sizes: WW 8-12,13 WWW 8-12,13

Slip Resistance	Good
Oil/Gas	Best
Chemicals	Best
Abrasions	Best
Non-Marking	Yes



+1.651.388.8211



5660 WORX Men's 6-inch Boot

ST EH

MADE IN CHINA

- Full Grain Brown Leather
- Direct Attach Welt Construction
- Steel Shank
- Removable Polyurethane Footbed
- Oil Resistant ENDURANCE Arrowhead Sole

Rating: ASTM F 2413-05, M I/75 C/75, EH
 Care: Boot Oil, Leather Protector
 Sizes: M 7-12,13,14 W 8-12,13 WW 8-12,13

Slip Resistance	Good
Oil/Gas	Best
Chemicals	Best
Abrasions	Best
Non-Marking	Yes



ENDURANCE Arrowhead



5525 WORX Men's 6-inch Boot

ST EH

MADE IN CHINA

- Full Grain, Oil Tanned Brown Leather
- Direct Attach Welt Construction
- Steel Shank
- Removable Polyurethane Footbed
- Oil Resistant ENDURANCE Cross Wire Sole

Rating: ASTM F 2413-05, M I/75 C/75, EH
 Care: Boot Oil, Leather Protector
 Sizes: M 7-12,13,14 W 7-12,13,14 WW 8-12,13

Slip Resistance	Good
Oil/Gas	Best
Chemicals	Better
Abrasions	Best
Non-Marking	Yes



ENDURANCE Cross Wire

KING TOE



8286 WORX Men's 5-inch Boot

ST EH PR

MADE IN CHINA

- Full Grain Brown Leather
- Direct Attach Welt Construction
- Steel Shank
- Removable EVA Footbed
- Oil Resistant ENDURANCE Arrowhead Sole

Rating: ASTM F 2413-05, M I/75 C/75, EH, PR
 Care: Boot Oil, Leather Protector
 Sizes: EEE 5-12,13,14

Slip Resistance	Good
Oil/Gas	Best
Chemicals	Best
Abrasions	Best
Non-Marking	Yes



ENDURANCE Arrowhead



8295 WORX Men's 5-inch Boot

ST EH

MADE IN CHINA

- Full Grain Brown Leather
- Direct Attach Welt Construction
- Steel Shank
- Removable EVA Footbed
- Oil Resistant ENDURANCE Arrowhead Sole

Rating: ASTM F 2413-05, I/75 C/75, EH
 Care: Boot Oil, Leather Protector
 Sizes: EEE 6-12, 13, 14

Slip Resistance	Good
Oil/Gas	Best
Chemicals	Best
Abrasions	Best
Non-Marking	Yes



ENDURANCE Arrowhead



8296 WORX Men's 5-inch Boot

ST EH

MADE IN CHINA

- Full Grain Black Leather
- Direct Attach Welt Construction
- Steel Shank
- Removable EVA Footbed
- Oil Resistant ENDURANCE Arrowhead Sole

Rating: ASTM F 2413-05, I/75 C/75, EH
 Care: Boot Oil, Leather Protector
 Sizes: EEE 5-12,13,14

Slip Resistance	Good
Oil/Gas	Best
Chemicals	Best
Abrasions	Best
Non-Marking	Yes



ENDURANCE Arrowhead



6552 WORX Men's Chukka

NT EH

MADE IN CHINA

- PU Coated Black Leather
 - Cement Construction
 - Non-Metallic Shank
 - Removable Polyurethane Footbed
 - Oil/Slip Resistant SSRT Diamond Sole
- Rating: ASTM F 2413-05, M I/75 C/75, EH
 Care: Leather Protector, Polish
 Sizes: M 7-12,13,14,15 W 7-12,13,14,15 WW 8-12,13

Slip Resistance	Best
Oil/Gas	Best
Chemicals	Best
Abrasions	Best
Non-Marking	Yes



NEW
Available 2011

4216 Red Wing Men's 6-inch Boot

NT EH



MADE IN CHINA

- Full Grain, Cordura® Upper with Boa® Technology Closure
 - Dual Density Supersole® Welt Construction
 - Fiberglass Shank
 - Cambrelle® Covered Polyurethane Footbed
 - Oil Resistant Rubber/PU Auger Sole
- Rating: ASTM F 2413-05, M I/75 C/75, EH
 Care: Leather Protector, NaturSeal®
 Sizes: D 7-12,13,14,15 EE 8-12,13,14



Slip Resistance	Better
Oil/Gas	Best
Chemicals	Best
Abrasions	Best
Non-Marking	Yes



Available in
Soft Toe-954

2239 Red Wing Men's 8-inch Boot

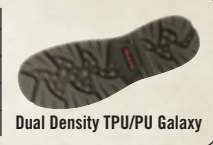
NT EH

MADE IN CHINA

- Full Grain, Poplar Frontier Leather
 - Direct Attach Construction
 - TPU Shank
 - Nylon Covered Polyurethane Footbed
 - Oil Resistant Dual Density TPU/PU Galaxy Sole
- Rating: ASTM F 2413-05, M I/75 C/75, EH
 Care: Leather Protector
 Sizes: B 9-12,13,14,15 D 6-12,13,14,15,16 EE 7-12,13,14 H 8-12,13,14



Slip Resistance	Better
Oil/Gas	Best
Chemicals	Best
Abrasions	Best
Non-Marking	Yes



2233 Red Wing Men's 8-inch Boot

ST

MADE IN THE **USA**

- Full Grain, Water Resistant Velva Boomer Leather
 - SuperSole® Welt Construction
 - Steel Shank
 - Oil Resistant Mini Lug SuperSole®
- Rating: ASTM F 2413-05, M I/75 C/75
 Care: Boot Oil, Leather Protector
 Sizes: AA 10-12,13,14 A 10-12,13,14 B 8-12,13,14,15,16 C 8-12,13 D 5-12,13,14,15,16,17,18 E 6-12,13,14 EE 7-12,13,14 EEE 6-12,13,14,15



Slip Resistance	Good
Oil/Gas	Best
Chemicals	Better
Abrasions	Better
Non-Marking	Yes



Available in
Soft Toe-938

2238 Red Wing Men's 8-inch Boot

ST EH

MADE IN THE **USA** W/IMPORTED MATERIALS

- Full Grain, Turbo Vegas Leather
 - SuperSole® Welt Construction
 - Fiberglass Shank
 - Removable RedBed™ Footbed
 - Oil Resistant Horizon™ SuperSole®
- Rating: ASTM F 2413-05, M I/75 C/75, EH
 Care: Boot Oil, Leather Protector
 Sizes: B 9-12,13,14,15 D 6-12,13,14,15,16 E 9-12,13 EE 7-12,13,14,15 H 8-12,13



Slip Resistance	Good
Oil/Gas	Best
Chemicals	Better
Abrasions	Better
Non-Marking	Yes



+1.651.388.8211



5485 WORX Men's 8-inch Boot

ST EH

MADE IN CHINA

- Full Grain, Oil Tanned Brown Leather
- Direct Attach Welt Construction
- Steel Shank
- Removable Polyurethane Footbed
- Oil Resistant ENDURANCE Arrowhead Sole

Rating: ASTM F 2413-05, M I/75 C/75, EH
 Care: Boot Oil, Leather Protector
 Sizes: M 7-12,13,14 W 7-12,13 WW 8-12,13 WWW 8-12,13

Slip Resistance	Good
Oil/Gas	Best
Chemicals	Best
Abrasions	Best
Non-Marking	Yes



ENDURANCE Arrowhead



5860 WORX Men's 8-inch Boot

ST EH

MADE IN CHINA

- Full Grain Brown Leather
- Direct Attach Welt Construction
- Steel Shank
- Removable Polyurethane Footbed
- Oil Resistant ENDURANCE Arrowhead Sole

Rating: ASTM F 2413-05, M I/75 C/75, EH
 Care: Boot Oil, Leather Protector
 Sizes: M 7-12,13,14 WW 8-12,13

Slip Resistance	Good
Oil/Gas	Best
Chemicals	Best
Abrasions	Best
Non-Marking	Yes



ENDURANCE Arrowhead



NEW
Available 2011

2491 Red Wing Men's 8-inch Boot

ST EH

ASSEMBLED IN THE **USA** W/IMPORTED COMPONENTS

- Brown Cordura® Upper with Boa® Technology Closure
- Dual Density Supersole® Welt Construction
- Fiberglass Shank
- ComfortForce® Footbed
- Oil Resistant Dual Density Mini Lug II Sole

Rating: ASTM F 2413-05, M I/75 C/75, EH
 Care: Silicone
 Sizes: D 4-12,13,14,15 EE 6-12,13,14



Slip Resistance	Better
Oil/Gas	Best
Chemicals	Best
Abrasions	Best
Non-Marking	Yes



Dual Density Mini Lug II



966 Red Wing Men's 9-inch Pull-On

ST

MADE IN THE **USA**

- Full Grain, Water Resistant Brown Boomer Leather
- Leather Welt Construction
- Steel Shank
- Oil/Slip Resistant Neoprene Cord Sole

Rating: ASTM F 2413-05, M I/75 C/75
 Care: Boot Oil, Leather Protector
 Sizes: EE 6-12 EEE 6-12

Slip Resistance	Best
Oil/Gas	Best
Chemicals	Best
Abrasions	Best
Non-Marking	No



Neoprene Cord



8241 Red Wing Men's 9-inch Pull-On

ST EH PR

MADE IN THE **USA**

- Full Grain, Water Resistant Brown Boomer Leather
- SuperSole® Welt Construction
- Fiberglass Shank
- Oil Resistant Mini Lug SuperSole®

Rating: ASTM F 2413-05, M I/75 C/75, PR
 Care: Boot Oil, Leather Protector
 Sizes: EE 5-12,13 EEE 6-12

Slip Resistance	Good
Oil/Gas	Best
Chemicals	Better
Abrasions	Better
Non-Marking	Yes



Mini Lug SuperSole®



redwingsafety.com



8242 Red Wing Men's

9-inch Pull-On



MADE IN THE USA

- Full Grain, Water Resistant Brown Boomer Leather
- SuperSole® Welt Construction
- Fiberglass Shank
- Oil Resistant Mini Lug SuperSole®

Rating: ASTM F 2413-05, M I/75 C/75, EH
 Care: Boot Oil, Leather Protector
 Sizes: E 5-12,13,14 EE 5-12,13 EEE 6-12,13

Slip Resistance	Good
Oil/Gas	Best
Chemicals	Better
Abrasions	Better
Non-Marking	Yes



Mini Lug SuperSole®



8264 Red Wing Men's

9-inch Pull-On



MADE IN THE USA

- Brown Finished Leather
- SuperSole® Welt Construction
- Fiberglass Shank
- Oil Resistant Mini Lug SuperSole®

Rating: ASTM F 2413-05, M I/75 C/75, PR, EH
 Care: Leather Protector
 Sizes: EE 5-12,13 EEE 6-12,13,14

Slip Resistance	Good
Oil/Gas	Best
Chemicals	Better
Abrasions	Better
Non-Marking	Yes



Mini Lug SuperSole®



8266 Red Wing Men's

9-inch Pull-On



MADE IN THE USA

- Brown Finished Leather
- SuperSole® Welt Construction
- Fiberglass Shank
- Oil Resistant Mini Lug SuperSole®

Rating: ASTM F 2413-05, M I/75 C/75, EH
 Care: Leather Protector
 Sizes: E 5-12,13,14 EE 5-12,13 EEE 6-12,13,14

Slip Resistance	Good
Oil/Gas	Best
Chemicals	Better
Abrasions	Better
Non-Marking	Yes



Mini Lug SuperSole®



5455 WORX Men's

10-inch Pull-On



MADE IN CHINA

- Full Grain, Oil Tanned Brown Leather
- Direct Attach Welt Construction
- Steel Shank
- Removable Polyurethane Footbed
- Oil Resistant ENDURANCE Arrowhead Sole

Rating: ASTM F 2413-05, M I/75 C/75, EH
 Care: Boot Oil, Leather Protector
 Sizes: M 7-12,13,14 W 7-12,13 WW 8-12,13

Slip Resistance	Good
Oil/Gas	Best
Chemicals	Best
Abrasions	Best
Non-Marking	Yes



ENDURANCE Arrowhead

+1.651.388.8211



8297 WORX Men's 9-inch Pull-On



MADE IN CHINA

- Full Grain Brown Leather
- Direct Attach Welt Construction
- Steel Shank
- Removable EVA Footbed
- Oil Resistant ENDURANCE Arrowhead Sole

Rating: ASTM F 2413-05, I/75 C/75, EH
 Care: Boot Oil, Leather Protector
 Sizes: EE 6-11,12,13,14 EEE 7-11,12,13

Slip Resistance	Good
Oil/Gas	Best
Chemicals	Best
Abrasions	Best
Non-Marking	Yes



ENDURANCE Arrowhead



8298 WORX Men's 9-inch Pull-On



MADE IN CHINA

- Full Grain Brown Leather
- Direct Attach Welt Construction
- Steel Shank
- Removable EVA Footbed
- Oil Resistant ENDURANCE Arrowhead Sole

Rating: ASTM F 2413-05, I/75 C/75, EH, PR
 Care: Boot Oil, Leather Protector
 Sizes: EE 6-11,12,13,14 EEE 7-11,12,13

Slip Resistance	Good
Oil/Gas	Best
Chemicals	Best
Abrasions	Best
Non-Marking	Yes



ENDURANCE Arrowhead



2405 Red Wing Men's 11-inch Pull-On



MADE IN THE USA

- Full Grain, Water Resistant Mahogany Original Leather
- Dual Density SuperSole® Welt Construction
- Fiberglass Shank
- Removable ComfortForce® Footbed
- Oil Resistant Aztec SuperSole® 2.0

Rating: ASTM F 2413-05, M I/75 C/75, EH
 Care: Boot Oil, Leather Protector
 Sizes: B 9-12,13,14 D 7-12,13,14,15 EE 6-12,13,14

Slip Resistance	Better
Oil/Gas	Best
Chemicals	Best
Abrasions	Best
Non-Marking	Yes



Aztec SuperSole® 2.0



Available in
Soft Toe-1170

2270 Red Wing Men's 11-inch Pull-On



MADE IN THE USA W/IMPORTED MATERIALS

- Full Grain, Waterproof Dark Brown Gambler Leather
- SuperSole® Welt Construction
- Fiberglass Shank
- Removable ComfortForce® Footbed
- Oil Resistant Horizon™ DL SuperSole®

Rating: ASTM F 2413-05, M I/75 C/75, EH
 Care: NaturSeal®, Leather Protector, Mink Oil
 Sizes: B 10-12,13,14 D 7-12,13,14,15 EE 7-12,13,14 H 8-12,13

Slip Resistance	Good
Oil/Gas	Best
Chemicals	Better
Abrasions	Better
Non-Marking	Yes



Horizon™ DL SuperSole®





2274 Red Wing Men's 11-inch Pull-On

NT EH

MADE IN CHINA

- Full Grain, Poplar Frontier Leather
- Direct Attach Construction
- TPU Shank
- Nylon Covered Polyurethane Footbed
- Oil Resistant Dual Density TPU/PU Galaxy Sole

Rating: ASTM F 2413-05, M I/75 C/75, EH
 Care: Leather Protector
 Sizes: B 10-12,13,14 D 7-12,13,14,15 EE 8-12,13,14

Slip Resistance	Better
Oil/Gas	Best
Chemicals	Best
Abrasions	Best
Non-Marking	Yes



Dual Density TPU/PU Galaxy

KING TOE



2231 Red Wing Men's 11-inch Pull-On

ST

MADE IN THE USA

- Full Grain, Water-Resistant Velva Boomer Leather
- SuperSole® Welt Construction
- Steel Shank
- Oil Resistant Mini Lug SuperSole®

Rating: ASTM F 2413-05, M I/75 C/75
 Care: Boot Oil, Leather Protector
 Sizes: AA 10-12,13,14 A 10-12,13 B 4-12,13,14,15,16
 C 8-12,13 D 5-12,13,14,15,16 E 6-12,13,14
 EE 7-12,13,14,15 EEE 6-12,13,14

Slip Resistance	Good
Oil/Gas	Best
Chemicals	Better
Abrasions	Better
Non-Marking	Yes



Mini Lug SuperSole®



6500 WORX Men's 10-inch Pull-On

ST EH



MADE IN CHINA

- Cordura® with Leather Trim
- Direct Attach Welt Construction
- Steel Shank
- Removable Polyurethane Footbed
- Oil Resistant ENDURANCE Cross Wire Sole

Rating: ASTM F 2413-05, M I/75 C/75, EH
 Care: Silicone
 Sizes: M 8-12,13,14 WW 8-12,13

Slip Resistance	Good
Oil/Gas	Best
Chemicals	Better
Abrasions	Best
Non-Marking	Yes



ENDURANCE Cross Wire



2230 Red Wing Men's 11-inch Pull-On

ST EH



MADE IN THE USA W/IMPORTED MATERIALS

- Full Grain, Waterproof Raindance Leather
- SuperSole® Welt Construction
- Fiberglass Shank
- Removable ComfortForce® Footbed
- Oil Resistant Mini Lug SuperSole®

Rating: ASTM F 2413-05, M I/75 C/75, EH
 Care: Leather Protector, Mink Oil, NaturSeal®
 Sizes: B 10-12,13,14 D 7-12,13,14,15 EE 7-12,13,14
 H 8-12,13

Slip Resistance	Good
Oil/Gas	Best
Chemicals	Better
Abrasions	Better
Non-Marking	Yes



Mini Lug SuperSole®



+1.651.388.8211

INSULATED



Available in
Soft Toe-1206

2206 Red Wing Men's 6-inch Boot



MADE IN THE USA W/IMPORTED MATERIALS

- Full Grain, Waterproof Dark Brown Gambler Leather
- SuperSole® Welt Construction
- Fiberglass Shank
- Removable RedBed™ Footbed
- Oil Resistant Horizon™ DL SuperSole®

Rating: ASTM F 2413-05, M I/75 C/75, EH
Care: NaturSeal®, Leather Protector, Mink Oil
Sizes: D 7-12,13,14,15 EE 7-12,13,14 H 8-12,13

Slip Resistance	Good
Oil/Gas	Best
Chemicals	Better
Abrasions	Better
Non-Marking	Yes



Horizon™ DL SuperSole®



Available in
Soft Toe-1411

2211 Red Wing Men's 8-inch Boot



MADE IN THE USA W/IMPORTED MATERIALS

- Full Grain, Waterproof Dark Brown Gambler Leather
- SuperSole® Welt Construction
- Fiberglass Shank
- Removable RedBed™ Footbed
- Oil Resistant Horizon™ DL SuperSole®

Rating: ASTM F 2413-05, M I/75 C/75, EH
Care: NaturSeal®, Leather Protector, Mink Oil
Sizes: B 10-12,13,14 D 7-12,13,14,15,16 EE 7-12,13,14 H 8-12,13

Slip Resistance	Good
Oil/Gas	Best
Chemicals	Better
Abrasions	Better
Non-Marking	Yes



Horizon™ DL SuperSole®



4445 Red Wing Men's 11-inch Pull-On



MADE IN THE USA W/IMPORTED MATERIALS

- Full Grain, Waterproof Calico Brawny Leather
- SuperSole® Welt Construction
- Fiberglass Shank
- ComfortForce® Footbed
- Oil Resistant Mini Lug SuperSole®

Rating: ASTM F 2413-05, M I/75 C/75, EH
Care: NaturSeal®, Mink Oil, Leather Protector
Sizes: D 7-12,13,14,15 EE 7-12,13,14 H 8-12,13

Slip Resistance	Good
Oil/Gas	Best
Chemicals	Better
Abrasions	Better
Non-Marking	Yes



Mini Lug SuperSole®



redwingsafety.com



4441 Red Wing Men's 11-inch Pull-On



MADE IN THE USA

- Full Grain, Water-Resistant Velvea Boomer Leather
- SuperSole® Welt Construction
- Steel Shank
- Oil Resistant Mini Lug SuperSole®

Rating: ASTM F 2413-05, M I/75 C/75
 Care: Boot Oil, Leather Protector
 Sizes: D 6-12,13,14 EE 7-12,13,14

Slip Resistance	Good
Oil/Gas	Best
Chemicals	Better
Abrasions	Better
Non-Marking	Yes



Mini Lug SuperSole®



INSULATED



Similar Style Available in Soft Toe-3048 page 38

3049 Red Wing Men's 17-inch Pac



MADE IN CHINA

- Full Grain, Waterproof Black Leather
- Cement Construction
- Nylon Covered PU Footbed
- Slip Resistant Rubber/PU Apex Sole

Rating: ASTM F 2413-05, M I/75 C/75, SD
 Care: NaturSeal®
 Sizes: EE 6-15 (whole sizes only)

Slip Resistance	Best
Oil/Gas	Better
Chemicals	Best
Abrasions	Best
Non-Marking	No



Rubber/PU Apex



Available in Soft Toe-447

3547 Red Wing Men's 9-inch Boot



MADE IN CHINA

- Full Grain, Waterproof Cigar Cider Leather
- Direct Attach Construction
- TPU Shank
- Removable Polyurethane Footbed
- Oil/Slip Resistant Vibram® Galactic Fire & Ice Sole

Rating: ASTM F 2413-05, M I/75 C/75, EH, CSA Grade 1, ESR Rated, PR
 Care: Leather Protector, NaturSeal®
 Sizes: D 7-12,13,14,15 EE 8-12,13,14

Slip Resistance	Best
Oil/Gas	Best
Chemicals	Best
Abrasions	Best
Non-Marking	Yes



Vibram® Galactic Fire & Ice



4425 Red Wing Men's 6-inch Boot



MADE IN THE USA

- Full Grain, Waterproof Calico Brawny Leather
- Dual Density SuperSole® Welt
- Fiberglass Shank
- ComfortForce® Footbed
- Oil Resistant Aztec SuperSole® 2.0

Rating: ASTM F 2413-05, M I/75 C/75 EH
 Care: NaturSeal®, Mink Oil, Leather Protector
 Sizes: D 7-12,13,14,15 E 8-12,13 EEE 8-12,13,14

Slip Resistance	Better
Oil/Gas	Best
Chemicals	Best
Abrasions	Best
Non-Marking	Yes



Aztec SuperSole® 2.0

MADE TO ORDER



+1.651.388.8211

WOMEN'S



8202 Red Wing Women's Chukka



MADE IN CHINA

- Full Grain, Black Dottie Leather
- Cement Construction
- TPU Shank
- SD Cushion Footbed
- Oil Resistant Track SD Urethane Sole

Rating: ASTM F 2413-05, F I/75 C/75, SD, PR
 Care: Shoe Creme
 Sizes: D 6-10½, 11, 12, 13

Slip Resistance	Better
Oil/Gas	Best
Chemicals	Best
Abrasions	Best
Non-Marking	Yes



Track SD



5547 WORX Women's Oxford



MADE IN CHINA

- Full Grain, Tumbled Brown Leather
- Direct Attach Stitchdown Construction
- Steel Shank
- Removable Polyurethane Footbed
- Oil Resistant TPU/PU Dual Lite Sole

Rating: ASTM F 2413-05, F I/75 C/75, EH
 Care: Leather Protector, Polish
 Sizes: M 5½-11 W 5½-10½

Slip Resistance	Good
Oil/Gas	Best
Chemicals	Best
Abrasions	Best
Non-Marking	Yes



TPU/PU Dual Lite



2382 Red Wing Women's Oxford



MADE IN THE USA W/IMPORTED MATERIALS

- Full Grain, Water Resistant Black Nature Soft Leather
- Cement Construction
- Steel Shank
- SD Foil/Felt Cushion Footbed
- Oil Resistant Tuffy SD Urethane Sole

Rating: ASTM F 2413-05, F I/75 C/75, SD
 Care: Shoe Creme, Leather Protector
 Sizes: D 4-10

Slip Resistance	Better
Oil/Gas	Best
Chemicals	Better
Abrasions	Better
Non-Marking	Yes



Tuffy SD Urethane

redwingsafety.com



2691 Red Wing Women's Hiker Boot



MADE IN THE USA W/IMPORTED MATERIALS

- Waterproof Brown Leather
 - Strobel Stitched/Cement Construction
 - Nylon Covered Polyurethane Footbed
 - Oil/Slip Resistant Extensity™ XL Rubber Sole
- Rating: ASTM F 2413-05, F I/75 C/75, EH
 Care: NaturSeal®, Leather Protector
 Sizes: D 4-10,11

Slip Resistance	Best
Oil/Gas	Best
Chemicals	Better
Abrasions	Best
Non-Marking	Yes



Available in Soft Toe-1626

2326 Red Wing Women's 6-inch Boot



MADE IN THE USA W/IMPORTED MATERIALS

- Full Grain, Turbo Vegas Leather
 - SuperSole® Welt Construction
 - Fiberglass Shank
 - Removable RedBed™ Footbed
 - Oil Resistant Horizon™ SuperSole®
- Rating: ASTM F 2413-05, F I/75 C/75, EH
 Care: Leather Protector, Boot Oil
 Sizes: B 6-10 D 6-10 EE 7-10

Slip Resistance	Good
Oil/Gas	Best
Chemicals	Better
Abrasions	Better
Non-Marking	Yes



2375 Red Wing Women's Hiker Boot



MADE IN CHINA

- Full Grain, Waterproof Hazelnut Trampler Leather
 - Cement Construction
 - Steel Shank
 - Nylon Covered Polyurethane Footbed
 - Oil/Slip Resistant Vibram® Summit TC-4 Sole
- Rating: ASTM F 2413-05, M I/75 C/75, EH
 Care: NaturSeal®, Leather Protector
 Sizes: B 6-10,11 D 4-10

Slip Resistance	Best
Oil/Gas	Best
Chemicals	Best
Abrasions	Best
Non-Marking	Yes



2369 Red Wing Women's Hiker Boot



MADE IN CHINA

- Waterproof Nubuck Brown Leather
 - Cement Construction
 - Steel Shank
 - Removable EVA Footbed
 - Oil/Slip Resistant Rubber/EVA Xplorer Sole
- Rating: ASTM F 2413-05, F I/75 C/75, EH
 Care: Nubuck/Suede Cleaner Kit
 Sizes: B 5-10,11 D 5-10,11 EE 6-10

Slip Resistance	Best
Oil/Gas	Best
Chemicals	Best
Abrasions	Better
Non-Marking	Yes



Available in Soft Toe-1681

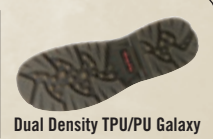
2381 Red Wing Women's 8-inch Boot



MADE IN CHINA

- Full Grain, Waterproof Hazelnut Trampler Leather
 - Direct Attach Construction
 - TPU Shank
 - Nylon Covered Polyurethane Footbed
 - Oil Resistant Dual Density TPU/PU Galaxy Sole
- Rating: ASTM F 2413-05, F I/75 C/75, EH
 Care: NaturSeal®, Leather Protector
 Sizes: B 6-10,11 D 6-10

Slip Resistance	Better
Oil/Gas	Best
Chemicals	Best
Abrasions	Best
Non-Marking	Yes



+1.651.388.8211



NEW

2323 Red Wing Women's Oxford



MADE IN CHINA

- Full Grain, Water-Resistant Black Star Leather
 - Opanka Construction
 - TPU Shank
 - Nylon Covered Polyurethane-SD Footbed
 - Oil/Slip Resistant Forager Sole
- Rating: ASTM F 2413-05, F I/75 C/75, SD
 Care: Leather Protector, Shoe Creme
 Sizes: B 5-10,11 D 5-10 EE 5-10

Slip Resistance	Best
Oil/Gas	Best
Chemicals	Best
Abrasions	Best
Non-Marking	No



NEW

2324 Red Wing Women's Oxford



MADE IN CHINA

- Full Grain, Brown Akiba Leather
 - Opanka Construction
 - TPU Shank
 - Nylon Covered Polyurethane-SD Footbed
 - Oil/Slip Resistant Forager Sole
- Rating: ASTM F 2413-05, F I/75 C/75, SD
 Care: Leather Protector, Shoe Creme
 Sizes: B 5-10,11 D 5-10 EE 5-10

Slip Resistance	Best
Oil/Gas	Best
Chemicals	Better
Abrasions	Best
Non-Marking	No



NEW

2321/2322 Red Wing Women's Slip-On



MADE IN CHINA

- Full Grain, Water-Resistant Black Star Leather (2321)
 - Full Grain, Brown Akiba Leather (2322)
 - Opanka Construction
 - TPU Shank
 - Nylon Covered Polyurethane-SD Footbed
 - Oil/Slip Resistant Forager Sole
- Rating: ASTM F 2413-05, F I/75 C/75, SD
 Care: Leather Protector, Shoe Creme
 Sizes: B 5-10,11 D 5-10 EE 5-10

Slip Resistance	Best
Oil/Gas	Best
Chemicals	Best
Abrasions	Best
Non-Marking	No



Slip Resistance	Best
Oil/Gas	Best
Chemicals	Better
Abrasions	Best
Non-Marking	No



NEW

4174 Red Wing Women's Oxford

MADE IN CHINA

- Full Grain Black Leather
 - Cement Construction
 - Nylon Shank
 - Polyurethane Footbed
 - Slip Resistant Victoria Sole
- Care: Shoe Creme
 Sizes: N 7-10 M 5-10,11,12 W 6-10,11,12

Slip Resistance	Best
Oil/Gas	Good
Chemicals	Good
Abrasions	Best
Non-Marking	Yes



NEW

5109 WORX Women's Oxford



MADE IN CHINA

- Synthetic Leather
 - Cement Construction
 - Non-metallic Shank
 - Removable Polyurethane Footbed
 - Rubber/EVA Viper Sole
- Ratings: ASTM F 2413-05, F I/75 C/75, EH
 Care: Leather Protector
 Sizes: M 5-10,11 W 6-10

Slip Resistance	Better
Oil/Gas	Better
Chemicals	Best
Abrasions	Best
Non-Marking	Yes





SINGAPORE

9224 WORX Men's Oxford



MADE IN CHINA



- Full Grain, Oil Tanned Water-Resistant Brown Leather
 - Direct Attach Welt Construction
 - Steel Shank
 - Removable EVA Footbed
 - Oil Resistant ENDURANCE Arrowhead Sole
- Rating: ASTM F 2413-05, M I/75 C/75, EH, SS513 SB
 Care: Leather Protector, Boot Oil
 Sizes: WW 5-11,12,13

Slip Resistance	Good
Oil/Gas	Best
Chemicals	Best
Abrasions	Best
Non-Marking	Yes



ENDURANCE Arrowhead

9225 WORX Men's 5-inch Boot



MADE IN CHINA



- Full Grain, Oil Tanned Water-Resistant Brown Leather
 - Direct Attach Welt Construction
 - Steel Shank
 - Removable EVA Footbed
 - Oil Resistant ENDURANCE Arrowhead Sole
- Rating: ASTM F 2413-05, M I/75 C/75, EH, SS513 SB
 Care: Leather Protector, Boot Oil
 Sizes: WW 5-11,12,13

Slip Resistance	Good
Oil/Gas	Best
Chemicals	Best
Abrasions	Best
Non-Marking	Yes



ENDURANCE Arrowhead

9227 WORX Men's 9-inch Pull-On



MADE IN CHINA



- Full Grain, Oil Tanned Water-Resistant Brown Leather
 - Direct Attach Welt Construction
 - Steel Shank
 - Removable EVA Footbed
 - Oil Resistant ENDURANCE Arrowhead Sole
- Rating: ASTM F 2413-05, M I/75 C/75, EH, SS513 SB
 Care: Leather Protector, Boot Oil
 Sizes: WW 5-11,12,13

Slip Resistance	Good
Oil/Gas	Best
Chemicals	Best
Abrasions	Best
Non-Marking	Yes



ENDURANCE Arrowhead

+1.651.388.8211



EN

3235 Red Wing Men's Oxford



MADE IN CHINA

- Full Grain, Water-Resistant Black Scout Leather
- Direct Attach Construction
- TPU Shank
- Nylon Covered Polyurethane-SD Footbed
- Oil/Slip Resistant Vibram® Galactic TC-4 plus SD Sole

Rating: EN ISO 20345 (S3)
 Care: Leather Protector, Shoe Creme
 Sizes: 36-46 (whole sizes only)

Slip Resistance	Best
Oil/Gas	Best
Chemicals	Best
Abrasions	Best
Non-Marking	Yes



Vibram® Galactic TC-4



3236 Red Wing Men's Oxford



MADE IN CHINA

- Full Grain, Water-Resistant Poplar Frontier Leather
- Direct Attach Construction
- TPU Shank
- Nylon Covered Polyurethane-SD Footbed
- Oil/Slip Resistant Vibram® Galactic TC-4 plus SD Sole

Rating: EN ISO 20345 (S3)
 Care: Leather Protector
 Sizes: 36-46 (whole sizes only)

Slip Resistance	Best
Oil/Gas	Best
Chemicals	Best
Abrasions	Best
Non-Marking	Yes



Vibram® Galactic TC-4



3245 Red Wing Men's 6-inch Boot



MADE IN CHINA

- Full Grain, Water-Resistant Black Scout Leather
- Direct Attach Construction
- TPU Shank
- SD Cushion Footbed
- Oil/Slip Resistant Vibram® Galactic TC-4 plus SD Sole

Rating: EN ISO 20345 (S3)
 Care: Leather Protector, Shoe Creme
 Sizes: 36-46 (whole sizes only)

Slip Resistance	Best
Oil/Gas	Best
Chemicals	Best
Abrasions	Best
Non-Marking	Yes



Vibram® Galactic TC-4



redwingsafety.com



3285 Red Wing Men's 8-inch Boot



MADE IN CHINA

- Full Grain, Water-Resistant Black Scout Leather
- Direct Attach Construction
- TPU Shank
- Nylon Covered Polyurethane-SD Footbed
- Oil/Slip Resistant Vibram® Galactic TC-4 plus SD Sole

Rating: EN ISO 20345 (S3)
 Care: Boot Oil, Leather Protector
 Sizes: 36-46 (whole sizes only)

Slip Resistance	Best
Oil/Gas	Best
Chemicals	Best
Abrasions	Best
Non-Marking	Yes



Vibram® Galactic TC-4



3286 Red Wing Men's 8-inch Boot



MADE IN CHINA

- Full Grain, Water-Resistant Poplar Frontier Leather
- Direct Attach Construction
- TPU Shank
- Nylon Covered Polyurethane-SD Footbed
- Oil/Slip Resistant Vibram® Galactic TC-4 plus SD Sole

Rating: EN ISO 20345 (S3)
 Care: Leather Protector
 Sizes: 36-46 (whole sizes only)

Slip Resistance	Best
Oil/Gas	Best
Chemicals	Best
Abrasions	Best
Non-Marking	Yes



Vibram® Galactic TC-4



3274 Red Wing Men's 9-inch Pull-On



MADE IN CHINA

- Full Grain, Water-Resistant Poplar Frontier Leather
- Direct Attach Construction
- TPU Shank
- Nylon Covered Polyurethane-SD Footbed
- Oil/Slip Resistant Vibram® Galactic TC-4 plus SD Sole

Rating: EN ISO 20345 (S3)
 Care: Leather Protector
 Sizes: 36-46 (whole sizes only)

Slip Resistance	Best
Oil/Gas	Best
Chemicals	Best
Abrasions	Best
Non-Marking	Yes



Vibram® Galactic TC-4



3247 Red Wing Men's 6-inch Boot



MADE IN CHINA

- Full Grain, Water-Resistant Black Scout Leather
- Direct Attach Construction
- TPU Shank
- Nylon Covered Polyurethane-SD Footbed
- Oil/Slip Resistant Vibram® Galactic TC-4 plus SD Sole

Rating: EN ISO 20345 (S3)
 Care: Leather Protector, Shoe Creme
 Sizes: 36-46 (whole sizes only)

Slip Resistance	Best
Oil/Gas	Best
Chemicals	Best
Abrasions	Best
Non-Marking	Yes



Vibram® Galactic TC-4



+1.651.388.8211


3246 Red Wing Men's 6-inch Boot


MADE IN CHINA

- Full Grain, Water-Resistant Poplar Frontier Leather
- Direct Attach Construction
- TPU Shank
- Nylon Covered Polyurethane-SD Footbed
- Oil/Slip Resistant Vibram® Galactic TC-4 plus SD Sole

Rating: EN ISO 20345 (S3)
 Care: Leather Protector
 Sizes: 36-46 (whole sizes only)

Slip Resistance	Best
Oil/Gas	Best
Chemicals	Best
Abrasions	Best
Non-Marking	Yes



Vibram® Galactic TC-4


KING TOE **SWEN-FLEX**

3227 Red Wing Men's 6-inch Boot


MADE IN THE USA

- Full Grain, Water-Resistant Turbo Vegas Leather
- Dual Density Supersole® Welt Construction
- Fiberglass Shank
- SD Cushion Footbed
- Oil/Slip Resistant Mini Lug SuperSole® 2.0

Rating: EN ISO 20345 (S3)
 Care: Boot Oil, Leather Protector
 Sizes: 38-48 (whole sizes only)

Slip Resistance	Best
Oil/Gas	Best
Chemicals	Best
Abrasions	Best
Non-Marking	Yes



Mini Lug SuperSole® 2.0


3270 Red Wing Men's 8-inch Boot


MADE IN THE USA

- Full Grain Turbo Vegas Leather
- Dual Density Supersole® Welt Construction
- Fiberglass Shank
- SD Cushion Footbed
- Oil/Slip Resistant Mini Lug SuperSole® 2.0

Rating: EN ISO 20345 (S3)
 Care: Leather Protector, Shoe Creme
 Sizes: 38-48 (whole sizes only)

Slip Resistance	Best
Oil/Gas	Best
Chemicals	Best
Abrasions	Best
Non-Marking	Yes



Mini Lug SuperSole® 2.0


3250 Red Wing Men's 9-inch Pull-On


MADE IN THE USA

- Full Grain, Turbo Vegas Leather
- Dual Density Supersole® Welt Construction
- Fiberglass Shank
- Removable Polyurethane-SD Footbed
- Oil/Slip Resistant Mini Lug SuperSole® 2.0

Rating: EN ISO 20345 (S3)
 Care: Boot Oil, Leather Protector
 Sizes: 38-48 (whole sizes only)

Slip Resistance	Best
Oil/Gas	Best
Chemicals	Best
Abrasions	Best
Non-Marking	Yes



Mini Lug SuperSole® 2.0





3210 Red Wing Men's Oxford



MADE IN CHINA

- PU Coated Black Leather
- Direct Attach Construction
- Non-metallic Shank
- Removable Polyurethane-SD Footbed
- Oil/Slip Resistant TPU/PU Transport Sole

Rating: EN ISO 20345 (S1)
 Care: Nubuck/Suede Cleaner Kit
 Sizes: 38-48 (whole sizes only)

Slip Resistance	Best
Oil/Gas	Best
Chemicals	Best
Abrasions	Best
Non-Marking	Yes



TPU/PU Transport



3211 Red Wing Men's Hiker Boot



MADE IN CHINA

- PU Coated Black Leather
- Direct Attach Construction
- Non-metallic Shank
- Removable Polyurethane-SD Footbed
- Oil/Slip Resistant TPU/PU Transport Sole

Rating: EN ISO 20345 (S1)
 Care: Nubuck/Suede Cleaner Kit
 Sizes: 38-48 (whole sizes only)

Slip Resistance	Best
Oil/Gas	Best
Chemicals	Best
Abrasions	Best
Non-Marking	Yes



TPU/PU Transport



NEW

3282 Red Wing Men's 8-inch Boot



MADE IN CHINA

- Brown Cordura® Upper with Boa® Technology Closure
- Direct Attach Construction
- TPU Shank
- Removable Polyurethane-SD Footbed
- Oil/Slip Resistant Vibram® Galactic TC-4 Sole

Rating: EN ISO 20345 (S3)
 Care: Silicone
 Sizes: 38-46 (whole sizes only)

Slip Resistance	Best
Oil/Gas	Best
Chemicals	Best
Abrasions	Best
Non-Marking	Yes



Vibram® Galactic TC-4



EN

+1.651.388.8211



SOFT TOE



8646 Red Wing Men's Slip-On

ASSEMBLED IN THE USA W/IMPORTED COMPONENTS

- Full Grain, Waterproof Black Rio Grande Leather
- Strobel Stitched/Cement Construction
- H-Tech Stabilizer Shank
- Removable Leather Covered Polyurethane Footbed
- Oil Resistant TPU/PU Omni Comfort Sole

Care: Leather Protector
 Sizes: EE 6-12,13 H 6-12,13

Slip Resistance	Better
Oil/Gas	Best
Chemicals	Best
Abrasions	Best
Non-Marking	Yes



TPU/PU Omni Comfort



8647 Red Wing Men's Slip-On

ASSEMBLED IN THE USA W/IMPORTED COMPONENTS

- Full Grain, Waterproof Dark Brown Worn Saddle Leather
- Strobel Stitched/Cement Construction
- H-Tech Stabilizer Shank
- Removable Leather Covered Polyurethane Footbed
- Oil Resistant TPU/PU Omni Comfort Sole

Care: Shoe Creme, Leather Protector
 Sizes: EE 7-12,13,14 H 6-12,13

Slip Resistance	Better
Oil/Gas	Best
Chemicals	Best
Abrasions	Best
Non-Marking	Yes



TPU/PU Omni Comfort



8636 Red Wing Men's Oxford

ASSEMBLED IN THE USA W/IMPORTED COMPONENTS

- Full Grain, Water-Resistant Black Rio Grande Leather
- Strobel Stitched/Cement Construction
- H-Tech Stabilizer Shank
- Removable Leather Covered Polyurethane Footbed
- Oil Resistant TPU/PU Omni Comfort Sole

Care: Shoe Creme, Leather Protector
 Sizes: B 10-12,13,14 D 7-12,13,14,15 EE 8-12,13 H 8-12,13

Slip Resistance	Better
Oil/Gas	Best
Chemicals	Best
Abrasions	Best
Non-Marking	Yes



TPU/PU Omni Comfort

redwingsafety.com

8637 Red Wing Men's Oxford



- Full Grain, Water-Resistant Dark Brown Worn Saddle Leather
- Strobel Stitched/Cement Construction
- H-Tech Stabilizer Shank
- Removable Leather Covered Polyurethane Footbed
- Oil Resistant TPU/PU Omni Comfort Sole

Care: Shoe Creme, Leather Protector
 Sizes: B 10-12,13,14 D 8-12,13,14 EE 8-12,13

Slip Resistance	Better
Oil/Gas	Best
Chemicals	Best
Abrasions	Best
Non-Marking	Yes



TPU/PU Omni Comfort

8195 Red Wing Men's 9-inch Pull-On



MADE IN THE USA

- Hawthorne Rough & Tough Distressed Pull-Up Leather
- Leather Welt Construction
- Oil/Slip Resistant Nitrile Cork Sole

Care: Boot Oil, Leather Protector
 Sizes: E 6-12 EE 6-12 EEE 6-12

Slip Resistance	Best
Oil/Gas	Best
Chemicals	Best
Abrasions	Best
Non-Marking	Yes



Nitrile Cork

1155 Red Wing Men's 11-inch Pull-On



MADE IN THE USA

- Full Grain, Water-Resistant Velva Boomer Leather
- Leather Welt Construction
- Steel Shank
- Oil Resistant Vibram® Chemigum Cork Sole

Care: Boot Oil, Leather Protector
 Sizes: B 9-12,13,14 C 9-12,13 D 4½-12,13,14,15,16 E 6-12,13 EE 6-12,13 EEE 7-12,13,14

Slip Resistance	Better
Oil/Gas	Best
Chemicals	Best
Abrasions	Best
Non-Marking	Yes



Vibram® Chemigum Cork



1188 Red Wing Men's 9-inch Pull-On



MADE IN THE USA

- Abilene Roughout Leather
- Leather Welt Construction
- Steel Shank
- Leather Insole
- Oil/Slip Resistant Nitrile Cork Sole

Care: Suede Brush
 Sizes: EEE 7-12

Slip Resistance	Best
Oil/Gas	Best
Chemicals	Best
Abrasions	Best
Non-Marking	Yes



Nitrile Cork

SOFT TOE

+1.651.388.8211



1177 Red Wing Men's 11-inch Pull-On

MADE IN THE USA

- Full Grain, Water-Resistant Brown Boomer Leather
- Leather Welt Construction
- Steel Shank
- Leather Insole
- Oil/Slip Resistant Nitrile Cork Sole

Care: Boot Oil, Leather Protector
 Sizes: EEE 6-12,13,14

Slip Resistance	Best
Oil/Gas	Best
Chemicals	Best
Abrasions	Best
Non-Marking	Yes



Nitrile Cork



8606 Red Wing Men's Oxford



MADE IN THE USA W/IMPORTED MATERIALS

- Full Grain, Black Mustang Leather
- Cement Bond Construction
- Oil/Slip Resistant Urethane Wedge Sole

Care: Shoe Creme, Leather Protector
 Sizes: EEE 6-12,13

Slip Resistance	Best
Oil/Gas	Best
Chemicals	Good
Abrasions	Good
Non-Marking	Yes



Urethane Wedge



8611 Red Wing Men's Slip-On



MADE IN THE USA W/IMPORTED MATERIALS

- Full Grain Black Leather
- Cement Bond Construction
- SD Foil/Felt Cushion Footbed
- Oil/Slip Resistant Urethane Wedge Sole

Care: Shoe Creme, Leather Protector
 Sizes: EEE 6-12,13

Slip Resistance	Best
Oil/Gas	Best
Chemicals	Good
Abrasions	Good
Non-Marking	Yes



Urethane Wedge

SOFT TOE



Similar Style Available in Safety Toe-3049 page 27

NEW

3048 Red Wing Men's 17-inch Pac



MADE IN CHINA

- Full Grain, Waterproof Leather with Realtree Hardwoods® Cordura®
- Cement Construction
- Nylon Covered PU Footbed
- Slip Resistant Rubber/PU Apex Sole

Rating: SD
 Care: Leather Protector, NaturSeal®
 Sizes: EE 8,9,10,11,12,13,14

Thinsulate Ultra
 1000 gram



Slip Resistance	Best
Oil/Gas	Better
Chemicals	Best
Abrasions	Best
Non-Marking	No



Rubber/PU Apex



Steel Toe
 Casco de Acero



Non-Metallic Toe
 Casco No Metálico



Aluminum Toe
 Casco de Aluminio



Electrical Hazard
 Di-Eléctrico



Puncture Resistant
 Resistente a las Perforaciones



DRI-FOOT

97222: White with Burgundy Accent

SIZES: 6-9, 9-12, 12-16
CONTENT: 80% Hi-Bulk Acrylic
10% Cotton
10% Stretch Nylon
UNIT: 6 pair



CUSHION CREW

97339: White / 97340: Black

SIZES: 6-9, 9-12, 12-16
CONTENT: 60% Cotton
15% Akwatek™
23% Stretch Nylon
2% Lycra
UNIT: 12 pair



ULTIMATE DIABETIC

97230: White / 97232: Black

SIZES: 6-9, 9-12, 12-16
CONTENT: 60% CoolMax®
30% Nylon
5% Polyester
4% X-Static®
1% Lycra® 3D™
UNIT: 6 pair



ARCTIC

97200: Multi

SIZES: 9-12, 12-16
CONTENT: 84% Wool
9% Acrylic
5% Nylon
2% Lycra® Spandex
UNIT: 6 pair



COTTON CREW

97228: White 97229: Black

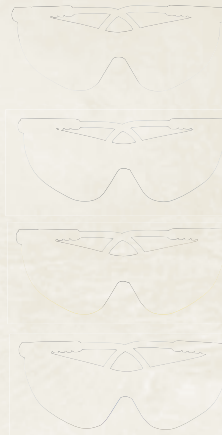
SIZES: 6-9, 9-12, 12-16
CONTENT: 85% Cotton
15% Stretch Nylon
UNIT: 6 pair



CLIMATECONTROL (COLD)

97208: Gray

SIZES: 6-9, 9-12, 12-16
CONTENT: 50% Duraspun® Acrylic
24% Wool
20% Stretch Nylon
5% Silk
1% Lycra® Spandex
UNIT: 6 pair



RED WING PREMIUM SAFETY GLASSES

95204: Clear

95205: Dark Gray

95206: Amber (cool)

95207: Blue Mirror

- Red Wing logo on temple
 - Co-injected soft nose pad prevents slipping while providing a pillow soft fit
 - Co-injected browbar improves air circulation and provides cushion during impact
 - Ratchet temple adjustment allows customized fit and improves wearers comfort
 - Meets ANSI Z87.1, CE EN 166
 - Durable Polyamide frame offers good resistance to oil, grease, aromatic solvents and alkaline
 - Single panoramic lens provides wide-angle vision incorporating side-shield and brow protection
 - Lens is made from UV385 Polycarbonate that filters out 99.9% of harmful UV radiation
 - Lens is hard coated to prevent scratching
- UNIT: 144 each

RED WING DELUXE SAFETY GLASSES

95222: Clear

95223: Smoke (Gray)

95224: Amber

95225: Cool I/O Mirror

95226: Silver Mirror

- Full wrap-around with curved Polycarbonate lens provides seamless front & side protection, without the distraction normally associated with traditional side shields with defined seams
 - Hard-coated anti-scratch / anti-fog lens with UV 385 stabilizer provides 99.9% UV protection
 - Black Polycarbonate frame w/nylon temple tips
 - Multi-adjustment system including 5-position lens tilt & 4-position temple length adjustment
 - Adjustable PVC nose pad provides comfort and reduces slipping for all day comfort
 - Ventilation slots between the frame and lens allow air circulation
 - Meet ANSI Z87.1, EN 166-F CE Standards
 - Red Wing Shoes logo on both temples
- UNIT: 12 each

RED WING SAFETY GLASSES

95220: Dark Gray

95221: Silver

- Wrap-around Polycarbonate lens offers unobstructed wide-angle viewing
 - Lens is made from UV385 Polycarbonate that filters out 99.9% of harmful UV radiation
 - Lens is finished with anti-scratch hard coating and added anti-fog advantage
 - Specification: ANZI Z87.1 CE EN 166
- UNIT: 12 each

FLAME RETARDANT SOCK

97314: Black

SIZES: 6-9, 9-12, 12-16
CONTENT: 85% Modacrylic
13% Nylon
2% Lycra® Spandex
UNIT: 6 pair



REVOLUTION



96323

SIZES: 3 fits women 5-5½
 4 fits women 6-6½
 5 fits women 7-7½
 6 fits women 8-8½, men 6-6½
 7 fits women 9-9½, men 7-7½
 8 fits women 10-10½, men 8-8½
 9 fits women 11-11½, men 9-9½
 10 fits women 12-12½, men 10-10½
 11 fits men 11-11½
 12 fits men 12-13½
 14 fits men 14-14½

- Podiatrist designed with therapeutic shell sealed between layers of Hypercel® and EVA foam
- Deep heel cup and molded arch designed for maximum under foot comfort

CUSTOM COMFORT



96386

SIZES: 3 fits women 4½-5
 4 fits women 5½-6
 5 fits women 6½-7
 6 fits women 7½-8, men 5½-6
 7 fits women 8½-9, men 6½-7
 8 fits women 9½-10, men 7½-8
 9 fits women 10½-11, men 8½-9
 10 fits women 11½-12, men 9½-10
 11 fits women 13, men 10½-11
 12 fits women 14, men 11½-12
 13 fits women 15, men 12½-13
 14 fits men 14
 15 fits men 15
 16 fits men 16

- Custom moldable footbed with moisture managing fabric cover
- Deep heel cup
- Poron middle layer, offering exceptional heel to toe support

REDBED™



96388

SIZES: 6, 7, 8, 9, 10, 11, 12, 13, 14, 15

- Moisture managing Agion® fabric covering
- Impact absorbing urethane foam
- Heel strike gel elastomer cushion pad and supportive instep columns
- Deep heel cup and wrap-around motion stabilizer
- Provides under foot comfort and support

POLYURETHANE FOOTBEDS



96324 (Polyurethane)

SIZES: 6, 7, 8, 9, 10, 11, 12, 13, 14, 15

- Shock absorbing polyurethane
- Contoured arch lift provides comfort
- Heel cup provides stability
- Durable nylon fabric lining



96325 (KING TOE®)

SIZES: 6, 7, 8, 9, 10, 11, 12, 13, 14, 15, 16

- Shock absorbing polyurethane
- Contoured arch lift provides comfort
- Heel cup provides stability
- Durable nylon fabric lining



96326 (Static-Dissipative)

SIZES: 6, 7, 8, 9, 10, 11, 12, 13, 14, 15

- Shock absorbing polyurethane
- Contoured arch lift provides comfort
- Heel cup provides stability
- Durable nylon fabric lining

COMFORTFORCE® (MEN'S SOFT TOE)



96368: Loden Green

SIZES: 8, 10, 12, 14

- Unique Venturi Air perfs for air exchange
- Weave pattern to facilitate energy wave caused during walking
- Comfort curved ribbed arch lift
- Heel cup channels for ventilation
- CFP-5 shock attenuating elastomer pad
- Shock absorbing urethane

YAKTRAX® PRO



95192

SIZES: SML (5-8.5), MED (9-11),
 LRG (11.5-13.5), XLG (14+)

Red Wing Yaktrax® PRO gives you confidence and safety in snowy and icy conditions while walking to the office or in the city. Made of compression molded natural rubber and hand-wound high strength, abrasion-resistant 1.4mm steel coils, the Red Wing Yaktrax® PRO conforms to the shape of your boot or shoe and is easy to put on and take off. The over boot strap keeps the Red Wing Yaktrax® PRO secure on your footwear. With its patented SkidLock coil design, the Red Wing Yaktrax® PRO provides 360 degrees of traction on packed snow and ice and can be worn in temperatures as low as -41°F.

UNIT: 6 pair

YAKTRAX® WALKER



95190

SIZES: XSM (1-4.5), SML (5-8.5),
 MED (9-11), LRG (11.5-13.5)

Red Wing Walker gives you instant confidence and safety in snowy and icy conditions while walking to the office or in the city. Made of an injection-molded, thermal plastic elastomer and hand-wound high strength, abrasion-resistant 1.2 mm steel coils, the Red Wing Walker conforms to the shape of your boot or shoe and is easy to put on and take off. With its patented SkidLock coil design, the Red Wing Walker provides 360 degrees of traction on packed snow and ice and can be worn in temperatures as low as -41°F. Walk as you normally would and experience stability on ice and snow like you have never felt before.

UNIT: 6 pair

TRI-FOLD WALLET



96571

- Men's genuine Aged Bark leather
- Tri-Fold construction w/stitching
- 4½" long x 3¾" wide
- 3 inside slots - 6 card slots
- Divided compartment for bills

UNIT: 6 pack

BI-FOLD WALLET



96570

- Men's genuine Aged Bark leather
- Bi-Fold construction w/stitching
- 4½" long x 3¾" wide
- 2 inside slots - 8 card slots
- Divided compartment for bills

UNIT: 6 pack

CELL PHONE CASE



96573

- Men's genuine Aged Bark leather
- Side goring accommodates most cell phones
- 4½" long x 2½" wide
- Hidden magnetic closure on flap
- Sturdy metal clip on back

UNIT: 6 pack

GENERAL UTILITY™



95241

SIZES: MED, LRG, XLG

- Durable synthetic leather
- Reinforced thumb and saddle
- Terry cloth sweat-wipe on thumb
- Molded Velcro strap w/ID tag
- 100% machine washable
- 'Built Tough by Ironclad' tag

UNIT: 3 pair

COWHIDE UNLINED GLOVES



95250: Gold

SIZES: MED, LRG, XLG

- Premium smooth grain cowhide
- Full palm patch including wing thumb
- Box X stitching
- Inside elastic for snug fit
- Self hem
- Red Wing Shoes embossed logo

UNIT: 3 pair

WORK CREW™



95240

SIZES: MED, LRG, XLG

- Durable synthetic leather
- Reinforced thumb and saddle
- Open cuff design
- 100% machine washable
- 'Built Tough by Ironclad' tag

UNIT: 3 pair

RANCH WORX®



95243

SIZES: MED, LRG, XLG

- Shrink resistant genuine leather
- DuPont™ Kevlar® reinforced high wear zones
- Terry cloth sweat-wipe on thumb
- Flexible 'ExoGuard' finger protection
- Combo Cuff® w/hidden Velcro tag
- 100% machine washable
- 'Built Tough by Ironclad' Tag

UNIT: 3 pair

COLD CONDITION® WATERPROOF



95244

SIZES: MED, LRG, XLG

- Durable synthetic leather
- Waterproof, windproof, breathable lining
- DuPont™ Teflon® treated shell
- Terry cloth sweat-wipe on thumb
- Neoprene cuff w/ID tag
- 100% machine washable
- 'Built Tough by Ironclad' tag

UNIT: 3 pair

HEAVY UTILITY™



95242

SIZES: MED, LRG, XLG

- Durable synthetic leather
- DuraClad® reinforced palm, fingers, thumb
- Terry cloth sweat-wipe on thumb
- Molded Velcro strap w/ID tag
- 100% machine washable
- 'Built Tough by Ironclad' tag

UNIT: 3 pair

THREE EASY STEPS TO BOOT CARE

Boots that are designed and built for rugged, wet or rough work environments require personal attention and proper boot care. The long-term life and daily comfort of your footwear will be prolonged by taking a few valuable minutes to apply the proper boot maintenance. Your boots and your feet will feel the difference. The three easy but important steps are as follows:

1 CLEAN

Boots made of waterproof leather should only be cleaned with warm water and a stiff bristle brush. For suedes and roughouts, the **Nubuck/Suede Cleaner Kit** can be used to remove dirt and retain nap. Other leathers can be cleaned with Red Wing's **Leather Cleaner** in order to remove excess dirt, waxes and other abrasive materials on the leather.

2 CONDITION

The finish of your boot can determine which conditioner to use. Here are some rules of thumb. On oil-tanned leathers, either **Boot Oil**, **Leather Conditioner** or **Mink Oil** can be used. On dry-tanned leathers, we recommend **Silicone** products. Silicone products may also be used on suedes and roughout leathers so that it will not matte the desired appearance. During the waterproof tanning processes, our waterproof leathers are

impregnated with conditioners at the time of tanning. Red Wing **Mink Oil** is the only approved care product to recondition these leathers. However, a small amount of **Silicone** can be occasionally applied to darken leathers based on personal preferences. Hold each boot upside down for each application. Notice that liquid and paste soaks into the leather immediately, especially if the leather is old, worn or dry. **DO NOT HEAT.** Use an old toothbrush to make sure you have adequate coverage of the dressing in close areas where your fingers cannot reach: welts, seams, gusset closures, around hardware. Let boots stand for a few minutes and apply a second coat if required.

3 PROTECT

The final step is to add extra protection and help preserve your footwear investment with Red Wing **Leather Protector**. This special non-aerosol liquid adds a layer of protection to keep the conditioner in the leather and the water, dirt, oil and mud out. Simply apply the **Leather Protector** to the entire boot, including the fabric, if any.

Proper care is that easy. You will see for yourself how easy these steps improve the life, function and comfort of your footwear.

1 CLEAN

LEATHER CLEANER

95163: (24 - 4 oz. containers with brush applicator)

Red Wing's Leather Cleaner creates a foaming action that helps to lift dirt particles from leather surfaces without drying or damaging. The water-based formula is environmentally safe and gentle to the natural fibers of leather. Be sure to re-protect the leather with the proper care products after cleaning.

BRUSH & DAUBER

95164: Brush (12) Brush measures approx. 6" x 2"

95165: Dauber (24) - Dauber measures approx. 4" long x 1½" in diameter

Polish Brush & Dauber made by hand with genuine horsehair bristles make perfect applicators and buffers for paste and creme polishes.

NUBUCK/SUEDE CLEANER KIT

95166: (12 per case)

Kit combines a 1.3 oz. cleaner bar with a nylon bristle brush. Removes marks, spots and soil from suede and nubuck shoes, boots, purses, coats, clothing and accessories. All suede and suede-like fabrics will look new, bringing matted, worn appearance to life. Using this cleaner bar will not change the color or texture of suede.



2 CONDITION

SILICONE

95110: (24 - 4 oz. cans/dauber) **95115:** (24 - 6 fl. oz. spray pumps)

95155: (1 - 1 gallon container)

Formulated especially for our dry-tanned leathers. Red Wing Silicone will help preserve your boots and shoes, giving them added water-repellency. For an easier and faster application, Red Wing Silicone is available in a convenient spray pump.

ALL NATURAL BOOT OIL

95132: (24 - 8 oz. containers)

All natural ingredients of pine pitch and mink oil are combined in various formulations to make this water-repellent conditioner. The pine pitch adds the natural aroma of freshly cut pine and has been used on leathers for centuries by Native Americans. This product contains no silicone or petroleum ingredients.

BOOT OIL

95120: (48 - ¾ fluid oz. cans) **95130:** (24 - 8 fluid oz. cans)

95150: (1 - 1 gallon*) **95151:** (12 - 32 fluid oz. containers*)

95152: (12 - 16 oz. oil containers w/adjustable brush - empty*)

Specially designed for oil-tanned Red Wing shoes and boots. Made of petrolatum, beeswax, and other natural waxes. Provides optimal conditioning qualities.



*For refill sales, Red Wing Boot Oil should only be sold in properly labeled containers.

SHOE CREAM

95170: BLACK, 95171: DUSKY BROWN, 95172: MEDIUM BROWN, 95181: LONDON TAN/ORO, 95174: BURGUNDY, 95177: NEUTRAL, 95176: WHITE (12 - 1.6 oz. glass jars - not pictured)

Colors are available to match Red Wing footwear. Shoe Cremes are a blend of high quality waxes, solvents, and dyes with lanolin added. When applied, these cremes lubricate leather to prevent drying out and give a lustrous glossy finish. Just enough dye is added to bring back the original color without over coloring.

MINK OIL

95160: (24 - 2% oz. containers - not pictured)

Red Wing Mink Oil is always popular with outdoor people. Long known for its softening and conditioning qualities, Mink Oil with lanolin and silicone also helps waterproof. Can be applied to all smooth leathers. Approved for use with waterproof leathers.

ALL NATURAL LEATHER DRESSING

95142: (24 - 4 oz. containers - not pictured)

Beeswax is combined with pine pitch and mink oil to formulate this paste version of our All Natural Boot Oil. This water-repellent conditioner has the natural aroma of freshly cut pine and contains no silicone or petroleum ingredients.

LEATHER CONDITIONER

95140: (24 - 6 oz. containers - not pictured)

Specially designed for oil-tanned Red Wing Shoes. A paste version of our liquid oil containing beeswax and natural waxes.

BLACK LEATHER CONDITIONER

95126: (24 - 2% ounce cans)

Petroleum based Red Wing Leather Conditioner with dye added. Conditions, waterproofs and restores color on all smooth oil-tanned black leathers.



MINK OIL

95122: (48 - .75 oz. containers)

Red Wing Mink Oil is always popular with outdoor people. Long known for its softening and conditioning qualities, Mink Oil with lanolin and silicone also helps waterproof. Can be applied to all smooth leathers. Approved for use with waterproof leathers.



3 PROTECT

NATURSEAL® WATERPROOFING



95144: (24 - 4 oz. containers - liquid)
95145: (24 - 4 oz. containers - paste)
95146: (1 gallon - liquid)

Leather is one of nature's most appealing gifts. It is very rugged, enduring treatment far better than most man-made fabrics. However, most leather is hydrophilic, which means leather is a very efficient sponge. Surrounding each fiber with a hydrophobic (water repelling) material to prevent the absorption of water is what NaturSeal® is all about. NaturSeal® has no odor...there is no offensive smell to put up with during application. NaturSeal® silicone base formula is unique in its ability to allow leather to breathe while remaining waterproof. NaturSeal® not only waterproofs, it conditions the leather for longer life and maximum protection. NaturSeal® penetrates leather deeply to maintain a waterproof barrier that does not wear off with usage and abrasion. NaturSeal® (liquid & paste) is approved by W.L. Gore & Associates for use on all footwear using their waterproofing bootie and by Red Wing Shoe Company for use on Red Wing waterproof leathers.

LEATHER PROTECTOR



95162: (12 - 4 oz. non-aerosol pumps)

Red Wing's Leather Protector is one of the most advanced products available for the protection of leather and fabrics. Its invisible coating keeps water, salt, grease and grime on the surface where they can easily be wiped away. Safe for all colors, especially light shades, because this product will not darken or change color.

TOE ARMOR™



95128: BROWN, 95129: BLACK (6 - 2 oz. containers)

Toe Armor™ is a water based urethane acrylic that will provide a protective shield over the toe of your footwear. Dries to a waterproof hard surface resistant to scuffs and knocks. Adheres to all kinds of materials.

RED WING/PEET BOOT DRYER



95116: (6 pack) **95118:** (18 pack)

Safely removes perspiration, wetness and odor overnight from any footwear. Cool air is pulled in through bottom vents and warmed. Warm air rises naturally to circulate through footwear. Silent thermal convection prevents shoe and boot damage.

SHOE GOO®



95124: (12 - 3.7 fl. oz. tubes)

ORIGINAL FORMULA is a superior adhesive and sealant that easily and permanently repairs all types of footwear. Dries to a waterproof, flexible rubber. Adheres to all kinds of materials. Can be used to mend rubber soles, canvas or leather tops, waders and rubber boots.

BOOT BUMPERS



95182: BLACK, 95183: DARK BROWN, 95184: TAN, 95185: MULTI-PACK DISPLAY

(12 per case) One size fits all

Boot Bumpers offer an economical solution to premature wearing of the toe area of boots. Flexible pieces of sturdy synthetic material adapt to the shape of the footwear and act as a covering for worn areas or help protect new leather. Lightweight Boot Bumpers are easy to apply with the specially formulated glue. They are resistant to cold, heat, water, chemicals and friction and will not mark floors. Recommended for use on plain toe footwear only. This product may void Red Wing Shoe Co. footwear warranty if applied incorrectly.

LASTS

All boots begin with a last. A last is a plastic mold shaped like a foot. This shape is what the boot is built around in manufacturing. The dimensions of the last correspond to the size and width of the boot. The same last can be used in multiple applications resulting in different looking, but similar fitting boots. As a result, if you previously fit into a particular size shoe using a certain last, you should fit into any style shoe built around that last. At Red Wing we use many lasts to create a variety of shoes and boots that meet any challenge.

LEATHERS

At Red Wing we use only A-select full grain leather (the best of the best) to make our boots and shoes superior to others in the marketplace. But we don't stop there. For each boot we select the right leather to match the typical working conditions and environment in which the boot or shoe will be used.



LEATHER PERFORMANCE MEASURES

Temper: Refers to the general firmness of a particular leather usually rated on a scale from 1 the firmest to 10 the softest.

Weight: Refers to the thickness of the leather. The ranking from thinnest to thickest is: LM, M, HM, H, HH, PHH, HHH.

Water-Resistant: Describes leather that has been tanned to resist moisture penetration, allowing water and other liquids to run off in order to keep the foot dry.

Waterproof: Describes leather that has been tanned and treated so that water cannot penetrate and the foot is kept dry under all conditions.

Full Grain: Refers to the outermost layer of leather whose grain has not been corrected or reduced. This is the highest quality leather available.

Barnyard-Resistant: Specially treated for the unique elements associated with farms including manure, urine, fertilizers and herbicides.

Polishable: Refers to leather that can be polished, is easily cleaned and has a tight surface to reduce absorption.

FOOTWEAR TECHNOLOGY

Fit Sizes Available: Footwear available in sizes and widths that cover all categories, allowing the best fit possible and will be in stock.



KING TOE®: Large non-metallic toe box (44% larger) which provides more room and comfort in toe area.



PROTECTION

DISCLAIMER: While all Red Wings protect your feet in one way or another, accidents can still happen and injuries can still occur. In an effort to prevent or minimize injury in the event of an accident, we offer footwear with the following features as added protection for your feet from the dangers of the job:

Steel Toe: Made from one of the most durable and dependable material on earth, Red Wing uses steel toe caps as additional protection in the event of an accident.

Aluminum Toe: Durable, aluminum toe caps are 31% lighter than steel, and meet ASTM F 2413-05, M I/75 C/75 standards for impact and compression.

Non-Metallic Toe: This exclusive feature to Red Wing offers the protection of a steel toe cap without added weight or the inconvenience of tripping metal detectors.

Internal/External Metatarsal Guard: This footwear is designed to prevent or reduce the severity of injury to the wearer's metatarsal area and toes. Metguards must meet both impact and compression standards.

LININGS

In selecting the right lining material for Red Wing boots, we consider everything. What other materials are going to be used? Where will the boot be worn? Under what conditions will the boot be exposed? Only after a complete understanding of the boot's needs, can we match the right lining to the job.

Brushed Tricot: A nylon that is knit and processed to deliver soft comfort and durability while keeping the foot dry.

Cambrelle®: This non-woven synthetic fabric provides excellent breathability and durability and is the world's best-known and most-used branded shoe lining. Cambrelle® possesses superior abrasion resistance ensuring you won't wear a hole in the lining.

Dri-Lex®: This two sided lining fabric keeps the foot dry and cool by pulling moisture away from the foot and sock. Approved by APMA for use in footwear.

Alpine: While providing a soft touch, this lining moves moisture away from the foot and is treated to be antibacterial and anti-fungal.

Twill: A cotton duck fabric that allows even shaping of the footwear to the foot, breathes well and dries quickly.

WATERPROOFING



A waterproof boot is created when the shoe and its materials are treated so the water cannot penetrate through the boot to the foot.

GORE-TEX®

In heavy-duty work boots, Red Wing uses GORE-TEX® for the ultimate in comfort and protection. GORE-TEX® has over 9 billion pores per square inch that prevents water from getting to your feet while allowing sweat vapor to pass right through keeping your feet dry and comfortable in all conditions.

Red Wing Waterproofing System: This system uses a three layer approach to keep feet dry. 1- A waterproof bootie is a barrier to keep water out. 2- Tricot is a protective material applied to the outside of the bootie to ensure a complete waterproof system. 3- Linings help move moisture away from the foot to help keep your feet dry.



INSULATION



Insulation protects the body from cold by trapping the body's own heat and preventing it from escaping.

Thinsulate™ Ultra INSULATION

Thinsulate™ Ultra Insulation: A product of 3M, Thinsulate™ Ultra Insulation sets the standard in lightweight insulation. Thinsulate™ Ultra Insulation combines moisture resistance, breathability and warmth in one package. Thinsulate™ Ultra Insulation even retains its insulating ability in damp conditions.

HARDWARE

Hardware enhances the lacing capabilities of work shoes and boots. Each type of hardware used by Red Wing is specifically selected to give the wearer the best fit and enhances the overall appearance of the boot.

Buckles: Red Wing buckles are durable and provide an ultra quick release making the boot easier to take off and put on than using traditional laces.

D-Rings: D-rings let the lace flow through easily so a boot can be fit snugly in just one pull.

Eyelets: At Red Wing our eyelets are stamped from brass sheet stock and resist perspiration, moisture and rusting. They are cinched through the leather to protect the leather from the laces and provide long-lasting fit and comfort.

Haverhill: Haverhill hardware is designed so the lace can be pulled through the loop easily and are riveted to the leather for extra strength and long-lasting durability.

Stud Hooks: Stamped from stock into a slug form, these hooks are very strong and will not collapse when hit, bumped, or banged. Their smaller size prevents them from hooking each other. Because they are riveted into the leather they will not rip out.

Klondike Hooks: Larger than stud hooks, this traditional hardware is stamped out of metal to form a hook that is especially easy to work and allows speed with putting on or taking off your boots. Red Wing's Klondikes are exceptionally strong and will seldom bend compared to inferior alternatives.

COUNTER

Counter refers to the material that is inserted in the back of the boot to help stabilize the heel and allow for a natural motion while walking.

Backstay Reinforcer: Generally made of fiberglass, this traditional counter allows the shoe to get the break-in feeling quickly while providing superior support.

Heel-Molded: This thermoplastic material actually takes the shape of the last resulting in a more durable and longer lasting counter.

FOOTBEDS

The footbed is what you feel most when you walk. It must be tough, stable and soft all at once. All of our footbeds are designed to keep your heel from flattening, receive impact and send it in the right direction (heel-outer foot-ball-big toe). We use technically superior materials to ensure healthy walking day after day.

Cambrelle® Covered Polyurethane: This footbed gives you lasting comfort by adding the durability and abrasion resistance of Cambrelle® to the shock absorption of Red Wing's specially formulated urethane.

ComfortForce®: This removable unit features unique Venturi air perforations to help keep feet cool and dry all day. The special weave pattern helps channel the energy caused by walking and the arch is curved to add extra comfort. The dual density dissipates shock, keeping your feet from tiring as the workday wears on.

FOOTBEDS (continued)

Dual Density Urethane/Comfort Supreme:

Using two unique urethanes, specially formulated by Red Wing, this footbed allows for superior energy channeling and comfort.

FoamTech™ SD: Combines brushed polyester, open cell polyurethane and SD material composed of polyester and conductive fibers that results in a footbed that is extremely breathable and static-dissipative.

Nylon Tricot Covered Polyurethane: Combines the superior shock absorption and breathability of an open cell polyurethane with the durable plushness of nylon tricot.

RedBed™: Advanced comfort via 4-layer construction of moisture managing fabric cover, impact absorbing urethane foam, heel and motion wrap-around stabilizer and heel strike gel elastomer cushion pad. Also features perforated ventilation, instep supporting columns, longitudinal arch support and engineered heel wall geometry for upper heel strike control.

SD Foil/Felt Cushion: This part urethane, part vinyl material allows for the dissipation of static combined with the soft texture of felt.

Urethane w/ PORON® heel: Combines the unique shock absorption quality of these materials to ensure your comfortable all day.

Formatic: An unrivaled infrastructure constructed on a polyurethane shelf with gel pads and self-customizing cork EVA.

INSOLES

The insole keeps the rest of the components working together. Below the insole you have stability, cushioning and wear resistance. From the insole up, there's comfort, stability and shock absorption working with the shape of your foot. Our insoles help the boot maintain its shape so the rest of the comfort features perform at optimum levels. Traditionally, insoles have been measured in "irons," with each 1.5 iron representing .8 millimeters or 1/32 of an inch. Insoles vary in thickness to match the needs and features of the entire boot.

Bon-Foam®: Utilizes the unique open cell structure of Bon-Foam® material with Bontex® to enhance the flow of air and help keep the foot cool and dry while adding to underfoot cushioning.

Leather Covered Cushion: Provide excellent moisture absorption in a lightweight natural material.

PORON®: This material is used for its three unique characteristics: cushioning, durability and lightweight combined with superior midsoles and outsole to provide long lasting comfort and stability.

SD Foam: This part urethane, part vinyl material allows for the dissipation of static combined with the soft cushion of foam.

Texon® w/Fleece: This lightweight material is ideal due to its durability. It only flexes in one direction (across the ball of the foot) to assist in the proper walking motion. The comfort of fleece is added to insulated boots.

DynaForce™: A built-in footbed system that absorbs pressure and provides overall support, stability and comfort. This innovative technology dramatically reduces underfoot pressure, and blocks painful pressure points by redistributing them evenly across the foot while minimizing shock.

SHANK

Shanks provide structural and torsional rigidity to a boot and ensure the boot flexes near the forefoot and not the heel. Also, a shank prevents you from feeling pain when you step on a shovel while digging.

Fiberglass: Lighter than steel but with exceptional strength. Fiberglass shanks don't set off metal detectors in airports and secure building sites.

Steel: Made from one of the most durable and dependable materials on earth, Red Wing uses steel shanks to support your feet.

Lineman: Wider than traditional steel shanks, it is designed to provide extra strength and support to withstand the rigors of climbing.

TC Tech™ / H-Tech Plate: Provides lightweight torsional stability with an anatomically contoured shank plate. This component is an integrated piece of nylon designed with a solid instep area for multi-directional strength and a series of "fingers" that extend toward the ball of the foot to allow flexibility.

MIDSOLE

In the midsole, cushioning and stability are the main jobs. Most boot companies use primarily the same materials. The difference is how they're put together. We take extra care in the midsole to ensure cushioning and foot stability stay constant for the life of the boot, rather than wear down prematurely. Most of the materials used in most midsoles are measured in "irons" which refers to the thickness of the material – the more "irons" the thicker the material.

Black 4 Iron: Made of nitrile rubber to add just the right amount of cushioning.

White 5 Iron SBR: Thicker than the Black 4 Iron to provide more comfort.

6 Iron Neoprene: This non-porous material provides superior oil resistance and excellent adhesion for long life.

7 Iron Hi-Tech: This low density blown rubber offers lightweight and flexibility for added comfort.

7½ Iron Hi-Tech and Steel Flex: Combines the comfort and lightweight of low-density rubber with the puncture resistance of stainless steel.

Black 7 Iron Oil-Resistant: Made from low density blown rubber this midsole combines lightweight, flexibility and oil resistance.

Black 7½ Iron Hi-Tech: Our thickest midsole for all day comfort.

Blown Polyester: Cushioning, lightweight and oil resistance in one midsole.

Leatherboard: Offers the support and solid foundation needed for heavy work and the durability for long days.

Leatherboard and Black Rubber: Combines the stability and solid foundation of leather with the cushioning and durability of rubber.

Swen-Flex®: Non-Metallic puncture resistant midsoles are manufactured from high strength woven fibers. Meets or exceeds all world standards for puncture resistance including CSA, ASTM and EN.

OUTSOLE

Our outsoles perform two functions. They withstand abuse from below, yet aren't so rigid your body "jars" with impact. They also cushion, but not to the point your feet tire out. We use specially formulated urethane and rubbers to achieve the perfect outsole for the right condition.

Urethane: We mold our urethane outsoles using a unique formula that puts cushioning and durability in a lightweight boot.

Rubber: Rubber outsoles are both high heat resistant and abrasion resistant. They are durable enough to last through your longest days and provide excellent resistance to cuts and scratches.

Crepe: This cellular rubber gives you the durability of traditional rubber with less weight so your feet and legs don't tire as the day goes on.

FOOTWEAR STANDARDS

WORK ENVIRONMENT HAZARDS

Every work environment exposes workers to different types of hazards. Each employer is required to perform a workplace assessment to determine the presence of work hazards and the need for personal protective equipment (PPE). In the case of foot injuries, common potential hazards include falling or rolling objects, electrical shock or piercing of footwear soles with sharp objects. There are countless situations and hazards that occur in the workplace everyday that can cause serious foot injury. The best protection from the work hazards that you can and cannot anticipate is quality PPE. For footwear, Red Wing Shoe Company is committed to providing quality, safety footwear for every worker every day.

The footwear protection guidelines and chart in this catalog were gathered to provide a general overview and quick comparison of global footwear safety standards. This information is not a definitive standard and we encourage you to refer to the official safety standard for clarification. Specific standards outlined in this catalog include:

- ASTM F2413-05 Standard Specification for Performance Requirements for Foot Protection
- CAN/CSA-Z195-02 Protective Footwear
- EN ISO 20345:2004 Personal Protective Equipment – Safety Footwear
- Singapore Standard SS 513 ISO 20345:2004 Personal Protective Equipment- Footwear

TESTING METHODS

1. IMPACT RESISTANCE This is a test of a shoe's capacity to protect the toe area of the foot against falling objects. For Impact testing, a weight is dropped onto the protective toe cap area of the footwear. The clearance remaining inside the cap after impact is then determined. Each standard identifies the atmospheric conditions of the test, the shape of the striker, the amount of weight and distance from which the weight must be dropped, the velocity of the drop and the impact energy delivered.

2. COMPRESSION RESISTANCE This is a test of a shoe's capacity to protect the toe area of the foot against heavy rolling objects. For Compression testing, the toe cap area of the footwear is compressed between parallel platens at a given rate of speed until the required compressive force is reached. The clearance remaining inside the cap after the compression is then determined.

3. METATARSAL PROTECTION This test measures the level of protection provided to the upper foot (metatarsal bones) and toe areas. Footwear offering metatarsal protection is designed to prevent or reduce injuries when the toe and metatarsal areas of the foot are exposed to “drop” hazards. Metatarsal protection safety shoes may be constructed with either internal or external metatarsal guards. For testing, a wax form is fit into the footwear and a weight is dropped onto the protected metatarsal area of the footwear, similar to the impact test. The height of the wax form after impact is then determined.

4. PUNCTURE RESISTANCE PR footwear reduces the possibility of sharp objects (nails, glass or metal) penetrating through the outsole causing injury to the foot. Protection is provided by a steel or puncture resistant material imbedded in the insole of the footwear. Puncture resistant devices are tested using a sharp steel pin forced into the device at a given speed. The force required to puncture the device is measured. The devices are also tested for flexibility and corrosion resistance.

5. ELECTRIC SHOCK RESISTANCE This type of footwear is designed to provide a secondary source of protection against accidental contact with live electrical circuits, electrically energized conductors, parts or apparatus under dry conditions, reducing the potential of electric shock. Protection is severely deteriorated in wet environments. To test electric shock resistant properties, the footwear is placed on a metal mesh platform acting as a large electrode. The footwear is filled with small metal spheres and a second electrode is placed within the spheres. A specified high voltage is applied to the footwear through the metal platform for a given length of time. Resistance is determined by the current flow (or leakage) through the footwear.

6. STATIC DISSIPATION This footwear is constructed to reduce excess static electricity by conducting the charge from the body to the ground. The footwear allows for limited protection against incidental contact with live electrical circuits and should not be worn around highly charged electrical equipment. It is recommended that static dissipative footwear be worn only in clean environments and worn in conjunction with static dissipative flooring.

Test methods for Static Dissipation vary by standard, using either human subjects or metal spheres inside footwear that are placed on either a wet or dry base electrode plate. A specified voltage is applied for a prescribed time and the electrical resistance is measured. Test conditions also vary in specified atmospheric conditions.

7. CONDUCTIVITY Conductive footwear is designed to facilitate/discharge static electricity from your body through your shoes into grounded floors. The floors must be grounded so that a charge can be dissipated properly, minimize static electricity and reduce the possibility of ignition of volatile chemicals

or explosives. To test for conductivity, the footwear is placed on a base electrode plate. Depending on the standard, it is tested dry or in water. The footwear is filled with small metal spheres and a second electrode is embedded in the spheres. A specified voltage is applied for a prescribed time and the electrical resistance is measured.

THE STANDARDS FOR FOOTWEAR PROTECTION

ASTM

The American Society for Testing and Materials (ASTM) International, a preeminent source for technical documentation for industries world wide announced that the former ANSI Z41 Standard for Personal Protection Protective Footwear was withdrawn in 2005. It was replaced by two new ASTM standards, titled F 2413-05 Standard Specification for Performance Requirements for Foot Protection and F 2412-05 Standard Test Methods for Foot Protection. These new standards provide safety and performance standards previously put forward by ANSI since 1967. ASTM website www.astm.org

CAN/CSA-Z195-02 Protective Footwear

A National Standard of Canada approved March 2003

The Canadian Standards Association (CSA) was chartered in 1919 and is a non-profit, voluntary membership association engaged in standards development and certification activities. The standards are used widely by industry and commerce and often adopted by municipal, provincial and federal governments in their regulations.



CSA Standard Z195, Protective Footwear, covers the design and performance requirements for protective footwear, including toe protection, sole puncture protection, electric-shock resistant soles and other requirements relating to metatarsal protection and general stability of the footwear. CSA website www.csa.ca

EN ISO 20345:2004

The European Standard was approved by CEN (European Committee for Standardization) on 2 January 2004 and supersedes EN 345. This European Standard specifies basic and additional (optional) requirements for safety footwear. The European Standard exists in three official versions (English, French and German). A version in any other language made by translation under the responsibility of a CEN member into its own language and notified to the Central Secretariat has the same status as the official versions. CEN members are the national standards bodies of Austria, Belgium, Cyprus, Czech Republic, Denmark, Estonia, Finland, France, Germany, Greece, Hungary, Iceland, Ireland, Italy, Latvia, Lithuania, Luxembourg, Malta, Netherlands, Norway, Poland, Portugal, Slovakia, Slovenia, Spain, Sweden, Switzerland and United Kingdom.

EN website www.iso.org

Singapore Standard SS 513:2005 (ISO 20345:2004)

This Singapore Standard was prepared by the Technical Committee on Personal Safety and Ergonomics under the purview of the General Engineering and Safety Standards Committee. This standard, comprised of Part 1 and Part 2, supersedes SS 105: 1997—‘Safety footwear’. Part 1 specifies basic and additional (optional) requirements for safety footwear and Part 2 specifies methods for testing footwear designed as personal protective equipment.

Part 1 of SS 513 is identical with EN ISO 20345:2004 —‘Personal protective equipment- Safety footwear’. Part 2 of SS 513 is identical with EN ISO 20344:2004 Personal protective Equipment- Test Methods for Footwear. Singapore Standard website www.standards.org.sg

DISCLAIMER: Red Wing Shoe Company, Inc. and their agents expressly state that these descriptions do not represent the actual formal standard—it only provides a quick comparison and general descriptions of testing methods and requirements. Refer to the actual published standards for specific requirements.

This general standards reference guide does not purport to address all of the safety concerns, if any, associated with its use. It is the responsibility of the user of these standards to establish appropriate safety and health practices and determine the applicability of regulatory limitations prior to use.

The standards are subject to revision at any time by the responsible technical committee(s). ASTM standards must be reviewed every five years and if not revised, either re-approved or withdrawn.

REFERENCES

ASTM: www.astm.org

Canadian Standards Association (CSA): www.csa.ca

European Standard (EN): www.iso.org

Singapore Standard (SS): www.standards.org.sg

American National Standards Institute (ANSI): www.ansi.org

International Organization for Standardization (ISO): www.iso.ch

Occupational Safety and Health Administration (OSHA): www.osha.gov

ASTM standards information is copyrighted by ASTM International, 100 Barr Harbor Drive, PO Box C700, West Conshohocken, PA 19428-2959, United States. EN standards information is copyrighted by the European Committee for Standardization, rue de Stassart, 36, B-1050 Brussels. CAN/CSA standards information by Canadian Standards Association, 5060 Spectrum Way, bureau 100, Mississauga, Ontario, Canada L4W 5N6. SS standards information is copy by SPRING Singapore, 2 Bukit Merah Central, Singapore 159835.

	ASTM	CSA	EN	SINGAPORE																					
IMPACT REQUIREMENT	<p>Class 75 (I) footwear for men shall demonstrate a minimum interior height clearance of 12.7 mm (0.50 in.) during impact exposure to 101.7 J (75 ft-lbf). Applies to both steel and composite protective caps.</p> <p>Class 75 footwear for women shall demonstrate a minimum interior height clearance and 11.9 mm (0.468 in.) during impact exposure of 101.7 J (75 ft-lbf). Applies to both steel and composite protective caps.</p>	<p>Grade 1 Footwear for men and women must withstand an impact energy of 125 joules (the equivalent of a 50 lb. object dropped at a height of 22 inches) with no cracking through the thickness of the cap wall.</p> <p>Samples must be conditioned and tested at both 70 and 0 degrees Fahrenheit. The minimum interior height clearance varies according to shoe size (ranging from 10.7 mm for a woman's size 3 to 14.2 mm for a man's size 14). Protective toecaps must show no signs of corrosion when exposed to a 5% salt solution for 24 hours.</p>	<p>Safety footwear must be tested in accordance with EN345. After an impact energy of 200 joules is delivered, the clearance under the toe cap shall be the following:</p> <table border="1"> <thead> <tr> <th>French Size</th> <th>English Size</th> <th>Min. Clearance</th> </tr> </thead> <tbody> <tr> <td>< 36</td> <td>< 3.5</td> <td>12.5 mm</td> </tr> <tr> <td>37-38</td> <td>4-5</td> <td>13.0 mm</td> </tr> <tr> <td>39-40</td> <td>5.5-6.5</td> <td>13.5 mm</td> </tr> <tr> <td>41-42</td> <td>7-8</td> <td>14.0 mm</td> </tr> <tr> <td>43-44</td> <td>8.5-10</td> <td>14.5 mm</td> </tr> <tr> <td>45+</td> <td>10.5 +</td> <td>15.0 mm</td> </tr> </tbody> </table>	French Size	English Size	Min. Clearance	< 36	< 3.5	12.5 mm	37-38	4-5	13.0 mm	39-40	5.5-6.5	13.5 mm	41-42	7-8	14.0 mm	43-44	8.5-10	14.5 mm	45+	10.5 +	15.0 mm	<p>Tested in accordance with SS513; 2005</p> <p>Singapore test methods and requirements are identical to the EN Standard.</p>
French Size	English Size	Min. Clearance																							
< 36	< 3.5	12.5 mm																							
37-38	4-5	13.0 mm																							
39-40	5.5-6.5	13.5 mm																							
41-42	7-8	14.0 mm																							
43-44	8.5-10	14.5 mm																							
45+	10.5 +	15.0 mm																							
COMPRESSION REQUIREMENT	<p>Class 75 (C) footwear for men shall demonstrate a minimum interior height clearance of 12.7 mm (0.50 in.) during exposure to a compressive force of 11,121 newtons (2500 lbf). Applies to both steel and composite protective caps.</p> <p>Class 75 footwear for women shall demonstrate a minimum interior height clearance of 11.9 mm (0.468 in.) during exposure to a compressive force of 11,121 newtons (2500 lbf). Applies to both steel and composite protective caps.</p>	<p>There is no compression standard for CSA.</p>	<p>Safety footwear must be tested in accordance with EN345. The clearance under the toe cap at a compression load of 15,000 newtons shall be the following:</p> <table border="1"> <thead> <tr> <th>French Size</th> <th>English Size</th> <th>Min. Clearance</th> </tr> </thead> <tbody> <tr> <td>< 36</td> <td>< 3.5</td> <td>12.5 mm</td> </tr> <tr> <td>37-38</td> <td>4-5</td> <td>13.0 mm</td> </tr> <tr> <td>39-40</td> <td>5.5-6.5</td> <td>13.5 mm</td> </tr> <tr> <td>41-42</td> <td>7-8</td> <td>14.0 mm</td> </tr> <tr> <td>43-44</td> <td>8.5-10</td> <td>14.5 mm</td> </tr> <tr> <td>45+</td> <td>10.5 +</td> <td>15.0 mm</td> </tr> </tbody> </table>	French Size	English Size	Min. Clearance	< 36	< 3.5	12.5 mm	37-38	4-5	13.0 mm	39-40	5.5-6.5	13.5 mm	41-42	7-8	14.0 mm	43-44	8.5-10	14.5 mm	45+	10.5 +	15.0 mm	<p>Tested in accordance with SS513; 2005</p> <p>Singapore test methods and requirements are identical to the EN Standard.</p>
French Size	English Size	Min. Clearance																							
< 36	< 3.5	12.5 mm																							
37-38	4-5	13.0 mm																							
39-40	5.5-6.5	13.5 mm																							
41-42	7-8	14.0 mm																							
43-44	8.5-10	14.5 mm																							
45+	10.5 +	15.0 mm																							
METATARSAL REQUIREMENT	<p>Metatarsal (Mt) protective footwear must first meet the Class 75 requirements for impact and compression resistant footwear.</p> <p>The height of the wax form used to measure metatarsal protection of men's footwear shall be a minimum of 25.4 mm (1.0 inch) after exposure of impact energy of 101.7 J (75 ft-lbf).</p> <p>For women's metatarsal protection there shall be a minimum of 23.8 mm (0.937 in.) after exposure of impact energy of 101.7 J (75 ft-lbf).</p>	<p>Metatarsal protective footwear must meet the Grade 1 Toe Cap requirement for impact resistant footwear.</p> <p>The Metatarsal protector must overlap the protective toe cap. Metal metatarsal guards must show no signs of corrosion when exposed to a 5% salt solution for 24 hours.</p>	<p>Safety footwear must be tested in accordance with EN345. The minimum clearance at the moment of impact shall be:</p> <table border="1"> <thead> <tr> <th>French Size</th> <th>English Size</th> <th>Min. Clearance</th> </tr> </thead> <tbody> <tr> <td>< 36</td> <td>< 3.5</td> <td>37.0 mm</td> </tr> <tr> <td>37-38</td> <td>4-5</td> <td>38.0 mm</td> </tr> <tr> <td>39-40</td> <td>5.5-6.5</td> <td>39.0 mm</td> </tr> <tr> <td>41-42</td> <td>7-8</td> <td>40.0 mm</td> </tr> <tr> <td>43-44</td> <td>8.5-10</td> <td>40.5 mm</td> </tr> <tr> <td>45 +</td> <td>10.5 +</td> <td>41.0 mm</td> </tr> </tbody> </table>	French Size	English Size	Min. Clearance	< 36	< 3.5	37.0 mm	37-38	4-5	38.0 mm	39-40	5.5-6.5	39.0 mm	41-42	7-8	40.0 mm	43-44	8.5-10	40.5 mm	45 +	10.5 +	41.0 mm	<p>Tested in accordance with SS513; 2005</p> <p>Singapore test methods and requirements are identical to the EN Standard.</p>
French Size	English Size	Min. Clearance																							
< 36	< 3.5	37.0 mm																							
37-38	4-5	38.0 mm																							
39-40	5.5-6.5	39.0 mm																							
41-42	7-8	40.0 mm																							
43-44	8.5-10	40.5 mm																							
45 +	10.5 +	41.0 mm																							
PUNCTURE RESISTANCE REQUIREMENT	<p>Puncture Resistant (PR) footwear must also meet the Class 75 requirements for impact and compression resistant footwear.</p> <p>The puncture resistant insole must withstand a puncture force of 270 lbs., will not crack after 1.5 million flexes and show no signs of corrosion when exposed to a 5% salt solution for 24 hours.</p>	<p>Footwear with protective sole inserts must also meet the Grade 1 requirement for impact resistant footwear.</p> <p>The puncture resistant insert shall cover the sole including the heel area.</p> <p>The puncture resistant insole must withstand a puncture force of 1200 newtons, will not crack after 1.5 million flexes and show no signs of corrosion when exposed to a 5% salt solution for 24 hours.</p> <p>Footwear is labeled with a green triangle.</p>	<p>Penetration Resistant Footwear must be tested in accordance with EN345. The force required to penetrate the sole unit shall not be less than 1,100 newtons. The metal insole must not crack after 1 million flexes and show no more than 5 areas of corrosion smaller than 2.5 mm² when exposed to a 1% salt solution for 7 days. Non-metallic penetration resistant insoles will be tested according to EN345.</p>	<p>Tested in accordance with SS513; 2005</p> <p>Singapore test methods and requirements are identical to the EN Standard.</p>																					
ELECTRIC SHOCK RESISTANCE REQUIREMENT	<p>Electric Shock Resistant (EH) footwear shall also meet the Class 75 requirements for impact and compression resistant footwear.</p> <p>Must withstand the application of 14,000 volts at 60 Hz for 1 minute with no current flow or leakage in excess of 3.0 milliamperes under dry conditions.</p>	<p>Electric Shock Resistant (ESR) footwear must also meet the Grade 1 requirement for impact resistant footwear.</p> <p>ESR footwear must withstand a test potential of 18,000 volts at 60Hz for 1 minute without disruptive discharge to ground. Under dry conditions, the leakage current shall not exceed 1 milliamperes.</p> <p>Footwear is labeled with an orange omega on a white rectangle.</p>	<p>Electrical Insulation is determined according to the method described in EN345. Footwear must comply with electrical class 0 or 00.</p>	<p>Tested in accordance with SS513; 2005</p> <p>Singapore test methods and requirements are identical to the EN Standard.</p>																					
STATIC DISSIPATIVE REQUIREMENT	<p>Static dissipative (SD) footwear shall also meet the Class 75 requirements for impact and compression resistant footwear.</p> <p>SD footwear shall reduce the accumulation of excess static electricity while maintaining a level of electrical resistance between 10⁸ ohms (1 megohm) and 10⁹ ohms (100 megohms).</p>	<p>Static dissipative footwear may or may not meet Grade 1 impact resistance. It is tested in water and the electrical resistance shall fall within a range of 10⁸ ohms (€2) to 10⁹ ohms (€2) for a period of 5 seconds.</p> <p>Footwear is labeled with a green "SD" on a yellow rectangle.</p>	<p>Antistatic Footwear must be tested in accordance with EN345 after conditioning in both wet and dry conditions. Electrical resistance shall be above 100,000 ohms (10⁵ €2) and less than or equal to 1,000 megohms (10⁹ €2).</p>	<p>Tested in accordance with SS513; 2005</p> <p>Singapore test methods and requirements are identical to the EN Standard.</p>																					
CONDUCTIVE PROTECTION REQUIREMENT	<p>Conductive (CD) footwear must also meet the Class 75 requirements for impact and compression resistant footwear.</p> <p>Footwear shall dissipate static electricity from the body to reduce the possibility of ignition of volatile compounds. Electrical resistance must range between 0 to 500,000 ohms.</p>	<p>Conductive footwear must meet also the Grade 1 requirement for impact resistant footwear and must be electrically ground the foot.</p> <p>The footwear is tested in water and the electrical resistance shall fall within a range of 0 to 500,000 ohms (€2) for a period of 5 seconds.</p> <p>Footwear is labeled with a black "C" on a red rectangle.</p>	<p>The electrical resistance of Conductive footwear must be tested in accordance with EN345 after conditioning in a dry atmosphere and cannot be greater than 100,000 ohms (€2).</p>	<p>Tested in accordance with SS513; 2005</p> <p>Singapore test methods and requirements are identical to the EN Standard.</p>																					
OTHER REQUIREMENTS	<p>ASTM safety footwear must be tested by a third party laboratory. The footwear does not need to be retested unless the standard is revised or the platform construction changes.</p>	<p>CSA safety footwear and the factories that produce the footwear must be certified by CSA International. CSA performs regular audits of both the factory and the footwear. One pair for every 500 pair produced must be tested by the manufacturing facility.</p>	<p>EN safety footwear must be tested by an EN certifying body. EN certification encompasses far more than just the safety aspects of the shoe. All components are individually tested as well as the fit and comfort of the footwear. EN has several categories of safety footwear depending on performance and the footwear is labeled accordingly. The footwear does not need to be retested unless the standard is revised or the platform construction changes.</p>	<p>Singapore safety footwear and the factories that produce the footwear must be tested by an approved certifying body. Singapore certification encompasses far more than just the safety aspects of the shoe. All components are individually tested as well as the fit and comfort of the footwear. Singapore has several categories of safety footwear depending on performance and the footwear is labeled accordingly. Singapore performs regular audits of the factory and each batch of footwear is inspected upon entry into Singapore.</p>																					

Limited Warranty

Limited Warranty Relating to Red Wing Branded Footwear

Red Wing branded footwear products are warranted against defects in workmanship and materials. If within 6 months of purchase, a defect occurs in a Red Wing branded footwear product as the result of normal use, Red Wing Shoe Company, Inc. ("Red Wing") will repair the defect or exchange the product. If a product defect occurs as the result of normal use within 6 to 12 months after purchase, Red Wing will repair the defect or issue a credit for 50% of the purchase price. If a product defect occurs as the result of normal use 12 months or more after purchase, Red Wing may, at its option, issue a fair and reasonable credit that can be applied to the purchase of Red Wing branded footwear. The amount of the credit will be determined in the dealer's sole judgment. Product failures caused by excessive or abusive wear conditions do not qualify for exchange or purchase credit. This warranty is available only to the original purchaser and is not transferable. No adjustment will be given without the original receipt of purchase. You must return your footwear to the Red Wing Shoe dealer from which the footwear was purchased.

DISCLAIMER: Except for express waterproof warranties for certain footwear styles, the above warranty is in lieu of any other warranty, expressed or implied, including any warranty of merchantability or fitness for a particular purpose. No agent, employee or representative of Red Wing has any authority to bind Red Wing to any affirmation, representation or warranty concerning Red Wing branded footwear products, except as stated herein. Red Wing shall not be liable for any consequential or incidental damages.

This limited product warranty gives you specific legal rights, and you may also have other rights that vary from state to state. Any implied warranties shall be effective for a period not exceeding 12 months from the date of purchase. Some states do not allow manufacturers to impose time limitations on certain implied warranties, so the above limitation may not apply to you.

Limited Warranty Relating to WORX Branded Footwear

WORX footwear products are warranted against defects in workmanship and materials. If within 6 months of purchase, a WORX footwear product defect occurs as the result of normal use, Red Wing Shoe Company, Inc. ("Red Wing") will repair the defect or exchange the product. If a product defect occurs as the result of normal use 6 months or more after purchase, Red Wing may, at its option, issue a fair and reasonable credit that can be applied to the purchase of WORX footwear, as applicable. The amount of the credit will be determined in the dealer's sole judgment. Product failures caused by excessive or abusive wear conditions do not qualify for exchange or purchase credit. This warranty is available only to the original purchaser and is not transferable. No adjustment will be given without the original receipt of purchase. You must return your footwear to the WORX dealer from which the footwear was purchased.

DISCLAIMER: Except for express waterproof warranties for certain footwear styles, the above warranty is in lieu of any other warranty, expressed or implied, including any warranty of merchantability or fitness for a particular purpose. No agent, employee or representative of Red Wing has any authority to bind Red Wing to any affirmation, representation or warranty concerning WORX footwear products, except as stated herein. Red Wing shall not be liable for any consequential or incidental damages.

This limited product warranty gives you specific legal rights, and you may also have other rights that vary from state to state. Any implied warranties shall be effective for a period not exceeding 6 months from the date of purchase. Some states do not allow manufacturers to impose time limitations on certain implied warranties, so the above limitation may not apply to you.

6 month Waterproof Warranty: This WORX product is warranted not to leak for six months from the date of purchase provided they are properly maintained. If within six months these boots leak as the result of normal use, WORX will repair the defect or exchange the product. Product failures caused by excessive or abusive wear conditions (cut, punctured or severely scraped) do not qualify for exchange or purchase credit. This warranty is available only to the original purchaser and is not transferable. No adjustment will be given without the original receipt of purchase. You must return your footwear to the WORX Footwear dealer where the footwear was purchased.

DISCLAIMER: The above warranty is in lieu of any other waterproof warranty. No agent, employee or representative of the Red Wing Shoe Company has any authority to bind Red Wing to any affirmation, representation or warranty concerning WORX products, except as stated herein. Red Wing shall not be liable for any consequential or incidental damages. This limited product warranty gives you specific legal rights and may also provide other rights that vary from state to state. No other written or express guaranties or warranties shall apply. Any implied warranties shall be effective for a period not exceeding six months from the date of purchase. Some states do not allow manufacturers to impose time limitations on certain implied warranties, so the above limitations may not apply to you.

Catalog Icon and Logo Key

PROTECTION STANDARDS

ASTM F 2413-05: Refers to the ASTM Standard Specification for Performance Requirements for Foot Protection. *I/75 C/75:* This rating is for impact and compression resistance. It determines a shoe's capacity to protect the toe area against falling or rolling objects. "*I/75 and C/75*" refer to the impact and compression energy in foot pounds for which the boot is rated. Class 75 is the highest level and is recommended for most applications.

DISCLAIMER: *While all Red Wings protect your feet in one way or another, accidents can still happen and injuries can still occur. In an effort to prevent or minimize injury in the event of an accident, we offer footwear with the following features as added protection for your feet from the dangers of the job.*

ST Steel Toe: Made from one of the most durable and dependable materials on earth, Red Wing uses steel toe caps as additional protection in the event of an accident. Tempered steel toe caps that meet ASTM F2413-05, *I/75 C/75* standards for impact and compression.

NT Non-metallic Toe: This Red Wing exclusive offers the protection of a steel toe cap without added weight or the inconvenience of tripping metal detectors. Non-metallic toe caps designed for metal sensitive areas that meet ASTM F2413-05, *I/75 C/75* standards for impact and compression.

AT Aluminum Toe: Durable, aluminum toe caps are 31% lighter than steel, and meet ASTM F 2413-05, *M I/75 C/75* standards for impact and compression.

EH Electrical Hazard (EH): Protective sole and heel. The sole and heel construction of this footwear is designed to reduce hazards due to contact of the outsole with electrically energized parts. It provides a secondary source of protection on substantially insulated surfaces. EH designates footwear that is designed to withstand 14,000 volts (rms) at 60Hz for one minute with no current flow or leakage in excess of 3.0 milliamperes (mA) under dry conditions. Extra protection from accidental contact with electrically energized objects. Meets ASTM F2413-05 standards. **WARNING:** EH non-conductive footwear is not to be worn near explosives or in other environments requiring conductive footwear.

PR Puncture-Resistant (PR): Standards for reducing the possibility of puncture wounds to the sole of the foot by penetrating objects. Footwear contains a puncture-resistant protective device that must be an integral part of the shoe to meet ASTM F 2413-05. Must withstand a minimum force of not less than 270 pound-force. Stainless steel midsole reduces foot injuries due to sole puncture. Meets ASTM F2413-05 standards.

MT Internal/External Metatarsal Guard: This footwear is designed to reduce or prevent the severity of injury to the wearer's metatarsal (instep) area and toes from "drop" hazards. Metguards must meet both impact and compression standards. Equipped with a guard that protects the metatarsal area and toes from falling objects. Meets ASTM F2413-05 standards.

Static-Dissipative (SD): Standard for the reduction of the accumulation of excess static electricity by conducting the charge from the body to the ground, while maintaining electrical resistance from 10⁶ ohms (1 megohm) to 10⁸ ohms (100 megohm). Ideal for sensitive electronic environments. Meets ASTM F2413-05 standards.

CANADIAN STANDARDS

CSA Grade 1 & ESR Rated: Refers to the Canadian Standards Association's (CSA) approval (CAN/CSA-Z195-02) for protective footwear. Grade 1 (green triangle tag) indicates the highest Canadian standard, 125 joules of energy, for toe impact with sole protection. There is a puncture-resistant midsole in every pair of CSA Grade 1 footwear that withstands a force of not less than 1200 N. ESR (white with orange omega tag) indicates soles that provide resistance to electrical shock. Under dry conditions, leakage current shall not exceed 1 mA when footwear is exposed to 18 kV at 60Hz for 1 minute.

ADDITIONAL LOGOS

Waterproof: Boot construction that keeps feet dry in wet conditions.

Insulated: Layers of insulating components to provide warmth in cold environments.

Fit Sizes Available: Footwear available in sizes and widths that cover all categories, allowing the best fit possible and will be in stock.

Vibram®: Exceptional design intersects with innovative rubber compounds to create versatile, performance outsoles. Art meets function, experience confronts the future, Vibram outsoles are poetry in motion. Proven over time, these soles offer excellent traction and high abrasion resistance in a multitude of environments.

GORE-TEX®: In heavy-duty work boots, Red Wing uses GORE-TEX for the ultimate in comfort and protection. GORE-TEX has over 9 billion pores per square inch that prevents water from getting to your feet while allowing sweat vapor to pass right through keeping your feet dry and comfortable in all conditions.

Thinsulate™ Ultra Insulation: A product of 3M, Thinsulate Ultra Insulation sets the standard in lightweight insulation. Thinsulate Ultra Insulation combines moisture resistance, breathability and warmth in one package. Thinsulate Ultra Insulation even retains its insulating ability in damp conditions.

KING TOE® Red Wing KING TOE®: Large non-metallic toe box (44% larger) which provides more room and comfort in toe area.

RedBed™: Advanced comfort via 4-layer construction of moisture managing fabric cover, impact absorbing urethane foam, heel and motion wrap-around stabilizer and heel strike gel elastomer cushion pad. Also features perforated ventilation, instep supporting columns, longitudinal arch support and engineered heel wall geometry for upper heel strike control.

SuperSole®: Single density urethane **SUPERSOLE™** sole designed to provide durability and comfort. It delivers performance factors of abrasion resistance, cut resistance, traction, and oil and chemical resistance.

SuperSole® 2.0: Dual density urethane **SUPERSOLE™** sole designed with inner sole to provide cushion and comfort and outer sole to provide durability and protection. This premium sole not only provides top performance in traction, abrasion resistance, cut resistance, oil and chemical resistance, but also delivers maximum comfort.

ComfortForce®: This removable footbed unit features unique Venturi air perforations to help keep feet cool and dry all day. The special weave pattern helps channel the energy caused by walking and the arch is curved to add extra comfort. The dual density dissipates shock, keeping your feet from tiring as the workday wears on.

Red Wing DynaForce™: This new technology dramatically reduces underfoot pressure, blocking painful pressure points by redistributing them evenly across the foot while minimizing shock.

ForceShield™: ForceShield™ internal metguard system features a unique foam material that absorbs shock the same way a hard plastic or metallic metatarsal guard would. This innovative product meets ASTM F2413-05 metatarsal standards for impact.

SWEN-FLEX® Swen-Flex®: Non-Metallic puncture resistant midsoles are manufactured from high strength woven fibers. Meets or exceeds all world standards for puncture resistance including CSA, ASTM and EN.

Red Wing Waterproofing System: This system uses a three layer system that has an inner moisture wicking fabric that moves moisture away from the foot.

6 MONTHS WORX Waterproof Warranty: Boots with this icon are warranted not to leak for 6 months from the date of purchase provided they are properly maintained. See full warranty for specific details.

+1.651.388.8211

Contact Information

Africa

Mehdi Nafa

314 Main Street
Red Wing, MN 55066 USA

e-mail: mehdi.nafa@redwingshoes.com

Tel: +1.651.385.6583

Fax: +1.651.385.0897

International Mobile: +1.651.269.8908

Japan Mobile: +81 90 4169 2840

Europe/Russia

David Harrison

Brook House
Tithe Barn Lane, Scorton
Preston UK
PR3 1BH

e-mail: david.harrison@redwingshoes.com

Tel: +44 1995 600789

Mobile: +44 7771 734304

Jan Henningsen

Lindholm Havnevej 31.2
5800 Nyborg DK

e-mail: jan.henningsen@redwingshoes.com

Tel: +1.651.890.9607

Fax: +45 5151 0663

Mobile: +45 9673 7747

Peter Skou

314 Main Street
Red Wing, MN 55066 USA

e-mail: peter.skou@redwingshoes.com

Tel: +1.651.385.6583

Fax: +1.651.385.0897

Mobile: +7 985 76 76 973

Latin America/Caribbean

Tory Kinson

314 Main Street
Red Wing, MN 55066 USA

e-mail: tory.kinson@redwingshoes.com

Tel/Fax: +1.865.288.3463

Mobile: +1.954.829.6833

Middle East/CIS Countries

Paul Olson

314 Main Street
Red Wing, MN 55066 USA

e-mail: paul.olson@redwingshoes.com

Tel: +1.651.385.1310

Fax: +1.651.385.0897

Mobile: +1.612.483.0390

Pacific Rim

Peter Darula

314 Main Street
Red Wing, MN 55066 USA

e-mail: peter.darula@redwingshoes.com

Tel: +1.651.385.1195

Fax: +1.651.385.0897

Mobile: +1.651.214.6634

United States/Canada

Kyle Pfeiffer

2710 Reed Road
Houston, TX 77051 USA

e-mail: kyle.pfeiffer@redwingshoes.com

Tel: +1.713.738.5104

Fax: +1.713.738.6870

Mobile: +1.651.260.2216

Lenny Moore

2710 Reed Road
Houston, TX 77051 USA

e-mail: lenny.moore@redwingshoes.com

Tel: +1.713.738.5106

Fax: +1.713.738.6870

Mobile: +1.281.682.9770



Red Wing Shoes

- Experience, quality, safety, and comfort.

At Red Wing Shoes, we take great pride in offering only the highest quality products to protect hard-working individuals in more than 80 different countries. Our customers expect superior products and customer service, and we deliver by continuously exceeding expectations one pair at a time.

Footwear Size Conversion Chart

USA Men's		3.5	4	4.5	5	5.5	6	6.5	7	7.5	8	8.5	9	9.5	10	10.5	11	11.5	12	13	14	15	16	
USA Women's	4	4.5	5	5.5	6	6.5	7	7.5	8	8.5	9	9.5	10	10.5	11	12								
European	34	34.5	35	35.5	36	37	37.5	38	38.5	39	40	41	41.5	42	42.5	43	44	44.5	45	46	47	48	49	50
British	1.5	2	2.5	3	3.5	4	4.5	5	5.5	6	6.5	7	7.5	8	8.5	9	9.5	10	10.5	11	12	13	14	15
cm Men's		21.5	22	22.5	23	23.5	24	24.5	25	25.5	26	26.5	27	27.5	28	28.5	29	29.5	30	31	32	33	34	
cm Women's	21	21.5	22	22.5	23	23.5	24	24.5	25	25.5	26	26.5	27	27.5	28	28.5								

Footwear Index

966.....	22	6500.....	25
1155	37	6550.....	16
1177.....	38	6552.....	21
1188.....	37	6602.....	12
		6604.....	12
2206.....	26	6607.....	13
2211	26	6633.....	14
2223	19	6634.....	14
2226	18	6646.....	13
2230	25	6647.....	13
2231	25	6667.....	16
2233	21	6668.....	16
2234.....	19	6670.....	17
2235	19	6674.....	17
2238	21	6681.....	17
2239	21	6682.....	17
2245	18	6690.....	17
2270	24	6700.....	14
2274.....	25	6702.....	14
2321.....	30	6703.....	14
2322.....	30	6704.....	15
2323.....	30		
2324.....	30	8195.....	37
2326.....	29	8202.....	28
2369.....	29	8204.....	13
2375.....	29	8207.....	13
2381.....	29	8212.....	18
2382.....	28	8215.....	18
2405.....	24	8241.....	22
2491.....	22	8242.....	23
2691.....	29	8249.....	18
		8264.....	23
3049.....	27	8266.....	23
3210.....	35	8281.....	15
3211.....	35	8286.....	20
3227.....	34	8291.....	15
3235.....	32	8294.....	16
3236.....	32	8295.....	20
3245.....	32	8296.....	20
3246.....	34	8297.....	24
3247.....	33	8298.....	24
3250.....	34	8606.....	38
3270.....	34	8611.....	38
3274.....	33	8636	36
3282	35	8637.....	37
3285.....	33	8646	36
3286.....	33	8647.....	36
3547.....	27	8701.....	12
4174.....	30	9224.....	31
4206.....	19	9225.....	31
4216.....	21	9227.....	31
4407.....	12		
4408.....	12		
4425.....	27		
4441.....	27		
4445.....	26		
5109.....	30		
5411.....	16		
5445.....	19		
5455.....	23		
5485.....	22		
5503.....	15		
5504.....	15		
5525.....	20		
5547.....	28		
5660.....	20		
5860.....	22		



Style numbers marked in **BOLD** indicate styles that have variety of widths.

Product Comparison Chart

	ST	NT	AT	EH	MT	PR	⚡	💧	❄️	Page #
8701	•									12
4407	•									12
4408	•			•						12
6602	•									12
6604	•									12
6607	•									13
8204	•									13
8207	•									13
6646	•			•						13
6647	•			•						13
6633	•			•						14
6634	•			•						14
6700		•								14
6702		•								14
6703		•								14
6704		•								15
5503	•									15
5504	•									15
8281	•			•						15
8291	•			•						15
8294	•			•						16
5411	•					•				16
6550	•	•		•						16
6667	•			•						16
6668	•			•						16
6681	•			•						17
6682	•			•						17
6690		•		•						17
6674		•		•						17
6670	•			•						17
8212	•					•				18
8215	•			•						18
8249	•			•						18
2245	•									18
2226	•			•						18
2223	•			•						19
2234		•		•						19
2235		•		•						19
4206		•		•						19
5445	•			•						19
5660	•			•						20
5525	•			•						20
8286	•			•						20
8295	•			•						20
8296	•			•						20
6552	•			•						21
4216	•			•						21
2239	•			•						21
2233	•									21
2238	•			•						21
5485	•			•						22
5860	•			•						22
2491	•			•						22
966	•			•						22
8241	•			•						22
8242	•			•						23
8264	•			•						23
8266	•			•						23
5455	•			•						23
8297	•			•						24
8298	•			•						24
2405	•			•						24
2270	•			•						24
2274		•		•						25
2231	•									25
6500	•			•						25
2230	•			•						25
2206	•			•						26
2211	•			•						26
4445	•			•						26
4441	•			•						27
3049		•		•						27
3547	•			•						27
4425	•			•						27

	ST	NT	AT	EH	MT	PR	⚡	💧	❄️	Page #
8202	•									28
5547	•			•						28
2382	•									28
2691	•			•						29
2326	•			•						29
2375	•			•						29
2369	•			•						29
2381	•			•						29
2323		•								30
2324		•								30
2321		•								30
2322		•								30
4174		•								30
5109		•		•						30
9224	•			•						31
9225	•			•						31
9227	•			•						31
3235				•						32
3236				•						32
3245				•						32
3285				•						33
3286				•						33
3274				•						33
3247				•						33
3246				•						34
3227				•						34
3270				•						34
3250				•						34
3210				•						35
3211				•						35
3282										35
8646										36
8647										36
8636										36
8637										37
8195										37
1155										37
1188										37
1177										38
8606										38
8611										38

Icon Key

- ST** Steel Toe
Casco de Acero
- NT** Non-Metallic Toe
Casco No Metálico
- AT** Aluminum Toe
Casco de Aluminio
- EH** Electrical Hazard
Di-Eléctrico
- MT** Metatarsal Guard
Protección Metatarsal
- PR** Puncture Resistant
Resistente a las Perforaciones
- ⚡** Static-Dissipative
Anti-Estática
- 💧** Waterproof
A Prueba de Agua/Impermeable
- ❄️** Insulated
Aislamiento Térmico

RED WING SHOES®



Red Wing Shoe Company, Inc.
314 Main Street
Red Wing, MN 55066 USA

+1.651.388.8211

redwingsafety.com



Mixed Sources
Product group from well-managed
forests, controlled sources and
recycled wood or fiber

Cert no. SCS-COC-001065
www.fsc.org
© 1996 Forest Stewardship Council

©2010 Red Wing Shoe Company, Inc. 94511 Rev 12/10