

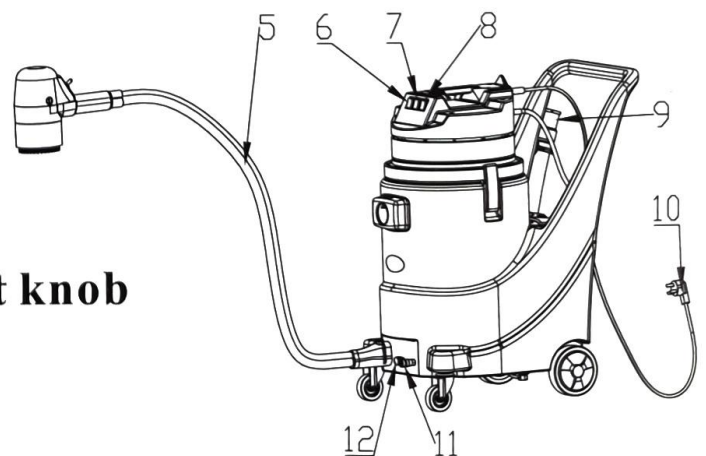
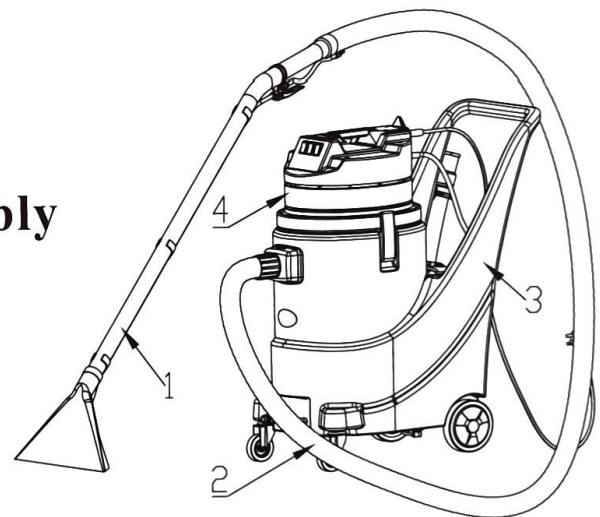
# **-Product Description-**

You are welcome to purchase and use the CB-3 multifunctional sofa cleaner machine. The machine has a compact design and is easy to operate. It can realize a variety of cleaning modes, such as dead dust, water absorption, suction washing, sofa cleaning, etc.), which can help property and cleaning companies to better save costs and improve efficiency. Suitable for all industrial and commercial environments, carpet vacuuming, water absorption and washing; sofa and curtain cleaning, etc.

## **-The main structure-**

Schematic diagram of the main operation structure of the CB-3 multifunctional sofa cleaner machine:

- 1. Squeegee components**
- 2. water suction nozzle assembly**
- 3 barrel body components**
- 4. Head assembly**
- 5. Grinding head components**
- 6. Main power switch**
- 7. Water suction switch**
- 8. Water spray switch**
- 9. Sewage pipe**
- 10. Power plug**
- 11. Sprinkler pipe joint**
- 12. Foam volume adjustment knob**





## Danger

Do not use the machine in a room with flammable substances (eg gasoline, thinner, fuel oil, etc.). Electrical or mechanical parts of the machine may cause these items to burn.



## Danger

Regularly check the power cord for tears or aging; if the machine is not in a safe and proper condition, do not start the machine and have it repaired by an authorized professional.



## Danger

The machine is faulty or damaged and must be repaired by a professional before being put back into service.



## Danger

This machine may only be used by persons who have been adequately trained in its use.



## Warn:

Do not insert or unplug the power plug with wet hands.



## Warn:

When operating this machine, it is necessary to avoid the machine rolling over the power cord to avoid damage to the power cord; avoid oil or sharp objects that cause the power cord to be bent, torn or damaged.



## Warn:

Make sure that the voltage rating in the outlet matches the voltage specified on the machine label.



## Warn:

The machine should be stored in a dry, dust-free, non-corrosive room. The temperature is not lower than +10°C or 3510°C. Low temperature, humidity and dust can severely shorten the life of electrical components



## Warn:

In the following cases, turn off the power of the machine and pull out the power plug

- ◆ When cleaning, maintaining, repairing, or replacing parts of the machine
- ◆ When the machine is in use temporarily or is left unattended.
- ◆ When the machine is stored.

# -Operation instructions-

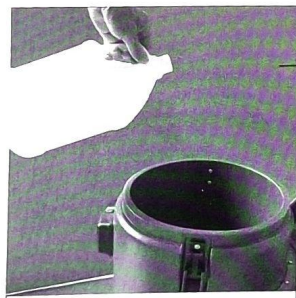
## The operation of pumping and absorbing water:

1. If necessary, add appropriate foam defoaming agent to the sewage tank. Turn the aviation lock sleeve counterclockwise and pull out the aviation plug. Open the bucket ears and remove the handpiece. Pour a suitable foam defoamer into the waste bucket. Put the machine head back, fasten the ear buckle, insert the aviation plug and turn the lock sleeve clockwise to lock the aviation plug (Pictures 1, 2, 3)

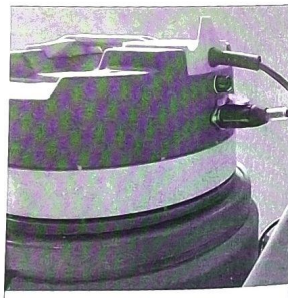
2. Insert the short connector of the water suction and spray pipe assembly into the new square interface, and insert the 1-point quick-connect male plug of the water-absorbing water-spray pipe assembly into the water spray pipe connector (1-point quick-connect female plug) (Figure 4, 5). The long connector is inserted into the interface of the squeegee, and the 1-point quick-connect female socket of the water-suction nozzle assembly is connected with the 1-point quick-connect female socket of the squeegee (Figure 6, 7)



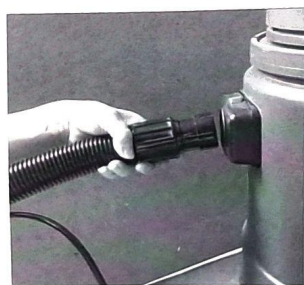
Picture 1



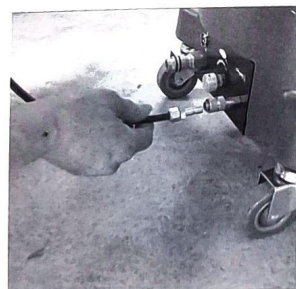
Picture 2



Picture 3



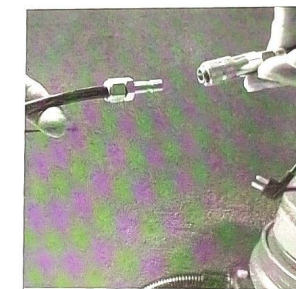
Picture 4



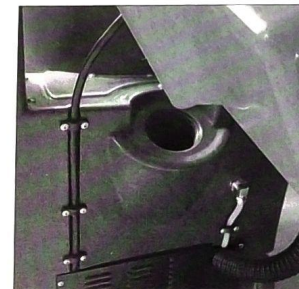
Picture 5



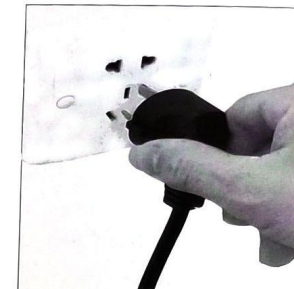
Picture 6



Picture 7



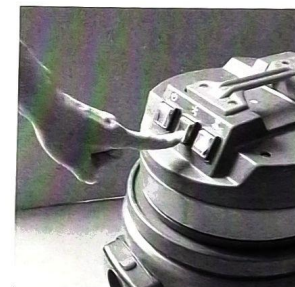
Picture 8



Picture 9



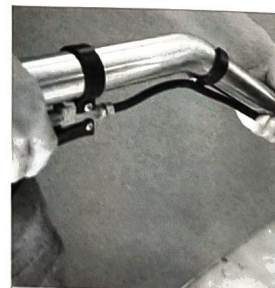
Picture 10



Picture 11



Picture 12



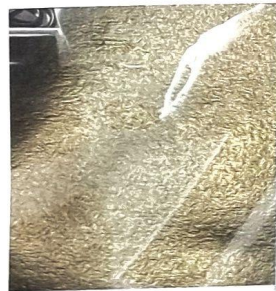
Picture 13

3. Open the cover of the clean water tank and pour clean water into the clean water tank. Close the solution tank cover (Figure 8).

4. Insert the plug of the power cord into the power socket, and press the main power switch, water suction motor switch, and waterspray motor switch respectively (Figure 10, 11, 12). Hold the handle of the water spray switch tightly, and the suction port of the squeegee is close to the carpet and pulled back tightly, and the suction port of the squeegee is close to the carpet and pulled back to perform the cleaning of the carpet (Figure 13). When cleaning the curtains, the portable squeegee assembly should be pulled back quickly.

## Sofa cleaning operation:

1. Rotate the aviation lock sleeve counterclockwise and pull out the aviation plug. Open the bucket ears and remove the handpiece. Pour a suitable foam defoamer into the waste bucket. Put the machine head back, fasten the ear buckle, insert the aviation plug and turn the lock sleeve clockwise to lock the aviation plug (Figure 14, 15, 16)
2. Insert the short joint of the water suction and spray pipe assembly into the new square interface, and insert the 1-point quick-connect male plug of the water-absorbing water-spray pipe assembly into the water spray pipe joint (1-point quick-connect female plug) (Figure 17, 18). The long connector is inserted into the port of the hand-held squeegee, and the 1-point quick-connect female socket of the water-suction nozzle assembly is connected with the 1-point quick-connect female socket of the hand-held squeegee (Figure 19, 20)
3. Open the cover of the clean water tank and pour clean water into the clean water tank. Close the solution tank cap (Figure 21).
4. Open the rubber stopper of the soaking tank, put on the funnel, pour the high-foaming mixed liquid into the soaking tank, and close the rubber stopper (Picture 22)
5. Insert the bubble inlet connector of the grinding head assembly into the bubble outlet connection port of the main unit (Figure 23)



Picture 14



Picture 15



Picture 16



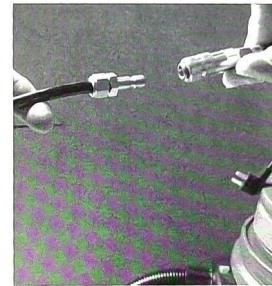
Picture 17



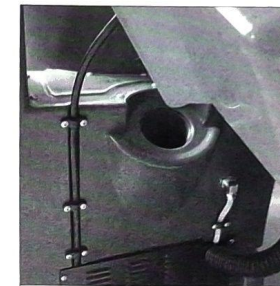
Picture 18



Picture 19



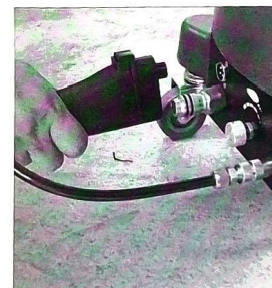
Picture 20



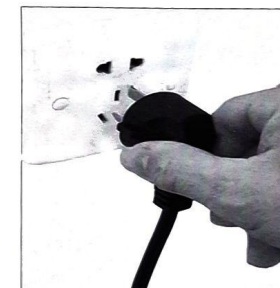
Picture 21



Picture 22



Picture 23



Picture 24



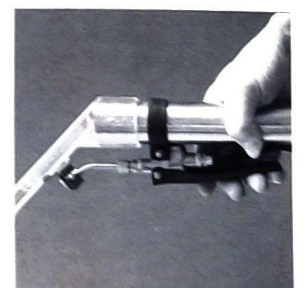
Picture 25



Picture 26



Picture 27



Picture 28

6. Insert the plug of the power cord into the power socket, press the main power switch, and turn the rotary switch of the grinding head assembly to the top, and the cleaning foam will flow out after a while. Adjust the foam knob to adjust the size of the foam. The sofa can be cleaned at this time. When the toggle switch is turned to the middle, the outflow of foam can be turned off. (Figures 24, 25, 26, 27)
7. Grasp the hand-held squeegee assembly with your hands to suck up the cleaned sofa residue (Figure 28)

## Cleaning of the sewage tank:

1. Turn off all switches and pull out the power plug to store the power cord. (Fig. 29).
2. Push the machine to the sewage outlet, pull out the sewage pipe, open the rubber stopper, put down the sewage pipe, and discharge the sewage. (Fig. 30).
3. Rotate the aviation lock sleeve counterclockwise and pull out the aviation plug (Figure 31).
4. Remove the machine head and clean the sewage bucket. After washing, put the machine head back, fasten the lock, insert the aviation plug and turn the lock sleeve clockwise to lock the aviation plug (Figure 32).



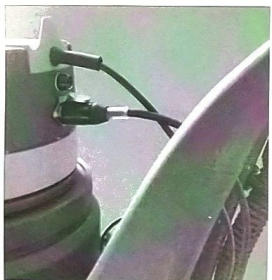
Picture 29



Picture 30



Picture 31



Picture 32

## -The main technical parameters-

Voltage:	220VAC
Frequency:	50Hz/60Hz
Suction motor	220VAC/1600W
Air pump:	220VAC/20W
Water spraying motor:	24VDC/30W
Foam Motor:	24VAC/16W
Brush motor:	24VDC/60W
Water tank:	21L
Sewage tank:	30L
Foam tank:	2.3L
Suction:	250 mbar
Noise	83dB

### Common malfunctions:

1. Press the main power switch and the light does not light up. Please check whether the power outlet has power and whether the power cord is damaged. Is the fuse intact.
2. Press the main power switch, the light will turn on, press the water suction motor switch or the water spray motor switch, the machine will not work. Please check whether the cable connecting the barrel body and the machine head is well connected.
3. Insufficient suction of the machine: please check whether the machine head is in place and whether the bucket ear buckle is fastened. Check hoses and connections for blockages.
4. No foam or bad foaming. Please check that the foam tank has high-foaming mixed water or that the concentration is as specified for the high-foaming cleaner.