

# USE AND MAINTENANCE MANUAL



COMMERCIAL AUTOSCRUBBER




## CONTENT


CONTENT .....	1
GENERAL SAFETY REGULATIONS .....	1
RECHARGING THE BATTERIES .....	2
USING THE MACHINE .....	2
DEACTIVATION OF THE MACHINE .....	3
MAINTENANCE .....	3
TRANSPORT .....	4
DISPOSAL .....	4
SYMBOLS USED IN THE MANUAL .....	5
SYMBOLS USED ON THE MACHINE .....	5
PURPOSE AND CONTENT OF THE MANUAL .....	5
TARGET GROUP .....	5
PRESERVATION OF THE USER .....	5
ON CONSIGNMENT OF THE MACHINE .....	5
INTRODUCTORY COMMENT .....	5
IDENTIFICATION DATA .....	5
TECHNICAL DESCRIPTION .....	5
TECHNICAL DESCRIPTION .....	5
SAFETY .....	5
SERIAL NUMBER PLATE .....	5
SPARE PARTS .....	6
HANDLING THE PACKAGED MACHINE .....	6
HOW TO UNPACK THE MACHINE .....	6
HOW TO MOVE THE MACHINE .....	6
BATTERY TYPE .....	6
RECHARGING THE BATTERY .....	6
PREPARATION OF MACHINE .....	7
PREPARING TO WORK .....	7
WORK .....	7
AT THE END OF THE WORK .....	7
MAINTENANCE .....	8
SQUEEGEE RUBBER KIT adjustment .....	8
TROUBLESHOOTING .....	8
DISPOSAL .....	9


## GENERAL SAFETY REGULATIONS


The following symbols are used to indicate any potentially hazardous situations. Always read this information carefully and take the necessary precautions to protect any people and/or objects that may be present.


Operator cooperation is paramount for accident prevention. No accident prevention program can be effective without the full cooperation of the person directly responsible for the machine's operation. Most accidents that occur at the workplace, during work activities, or while in transit, are caused by the failure to respect the most basic safety regulations. An attentive, careful operator is most effective guarantee against accidents and is fundamental in order to implement any prevention program.


 **DANGER:** Indicates an imminent danger that could cause serious injury or death.

 **WARNING:** Indicates a probable dangerous situation that could cause serious injury or death.

 **CAUTION:** Indicates a probable dangerous situation that could cause minor injuries.

 **ATTENTION:** Indicates a probable dangerous situation that could damage objects.

 **N.B.:** Indicates a note regarding essential or useful functions.

 **CONSULTATION:** Indicates the need to consult the Operator's Manual before performing any operation.

## RECHARGING THE BATTERIES



### DANGER:

- If the battery charger power cable is damaged or broken, it should be replaced by the manufacturer, by authorized service personnel or else by a qualified person, in order to protect against hazards.
- Keep sparks, flames, and incandescent materials at a safe distance from the batteries.
- Before charging check that the electric cable that connects the battery charger to the batteries is not damaged, and if it is damaged do not use it and contact technical assistance.
- Before using the battery charger, check that the electric socket that connects the battery charger to the mains is not damaged, and if it is do not use it and contact an authorized service technician or another qualified person, in order to avoid and hazardous situations.
- Do not disconnect the battery charger cable from the machine socket when the battery charger is operating. This is necessary to prevent electric arcs forming. To disconnect the battery charger when charging, first disconnect the power cable from the mains socket.



### WARNING:

- Do not use incompatible battery chargers since they could damage the batteries and potentially cause a fire. To charge the battery only use the detachable power pack provided with this machine.
- Keep the battery charger's cable at a safe distance from any hot surfaces.
- Carefully read the user manual of the battery charger you want to use before recharging.
- Do not disconnect the battery charger from the mains socket with wet hands.

## USING THE MACHINE



### DANGER:

- In the event of danger, quickly press the machine's main switch and remove the battery from the battery compartment.
- Never collect gases, explosive/inflammable liquids or powders, nor acids and solvents! These include gasoline, paint thinners and fuel oil (which, when mixed with the vacuum air, can form explosive vapors or mixtures), and also non-diluted acids and solvents, acetones, aluminum and magnesium powders. These substances may also corrode the materials used to construct the machine.
- If the machine is used in dangerous areas (e.g. petrol stations), the relative safety standards must be observed. It is forbidden to use the machine in environments with a potentially explosive atmosphere.



### WARNING:

- The machine must be exclusively used by authorized, trained personnel.
- Do not use the machine on surfaces with a slope greater than the one indicated on the serial number plate.
- The machine is not suitable for cleaning rough or uneven floors. Do not use the machine on slopes.
- In the event of a fire, use a powder extinguisher. Do not use water.
- Adapt the speed to the adhesion conditions.
- In order to prevent the unauthorized use of the machine, the power supply must be interrupted, switch the machine off using the main switch, remove the battery from the battery compartment.
- Do not use the machine without the requisite knowledge and authorizations.
- Do not use the machine if you have not read and understood the following user manual.
- Do not use the machine under the influence of alcohol or drugs.
- Do not use the machine when using a mobile phone or other types of electronic devices.
- Do not use the machine if it is not working correctly.
- Do not use the machine in areas where there are inflammable vapors or liquids or combustible powders.
- Do not use the machine in areas that are too dark to see the controls or operate the machine safely, unless the work lights or the front headlights are on.



### CAUTION:

- This machine must not be used by people (including children) with reduced physical, sensorial and mental capabilities, or by people without any experience or knowledge, unless they have been controlled and instructed in the use of the machine by those responsible for their safety. Children must be supervised to ensure they do not play with the machine.
- During the working of the machine, pay attention to other people and especially to children.
- The machine must only be powered with a voltage equal to that shown on the serial number plate.
- Read the labels on the machine carefully. Do not cover them for any reason, and replace them immediately if they become damaged.

- The machine must only be used and stored in an enclosed or covered environment.
- The machine must not be used or stored outdoors in damp conditions or directly exposed to rain.
- The machine does not cause harmful vibrations.
- Use the machine only in the way described in this manual.
- Do not pick up anything that is burning or smoldering, like cigarettes, matches or glowing embers.
- Always follow the instructions for mixing, use and disposal on the containers of the chemical substances.

 **ATTENTION:**

- Always take appropriate measures to protect any individuals and/or objects that may be present while using this machine.
- Be careful to avoid collisions with shelving or scaffolding, above all if there is a risk of objects falling from heights.
- Do not place any liquid containers on the machine.
- The machine must only be used under temperature conditions ranging from 0 °C to +40 °C.
- When using detergents to clean the flooring, always follow the instructions and respect the warnings indicated on the containers' labels.
- Always use appropriate gloves and protective equipment when handling the detergents used to clean the floor.
- Avoid working with the brushes when the machine is standing still, so as to avoid damage to the floor.
- Do not allow any objects to penetrate into the machine's openings. Do not use the machine if the openings are obstructed.
- Keep the machine's openings free of any dust, lint, hairs, or any other foreign materials that could reduce the airflow.
- Do not remove or alter any labels affixed to the machine.
- Use only the brush supplied with the machine or those specified in the following manual. Using other brushes compromises the safety of the machine and its operator.
- Before starting to work check that there are no leaks.
- Before starting to work check that all the safety devices have been installed and are working correctly.
- Take all due precautions so that hair, jewelry, loose clothing do not get entangled in the machine's moving parts.
- Only use the machine in well-lit areas.

## DEACTIVATION OF THE MACHINE



**The machine must not be transported or parked in its rest position when the solution tank and recovery tank are full.**

 **WARNING:**

- Always protect the machine against sunlight, rain, and other atmospheric agents, both while it is stationary and while it is in function. Store the machine in a dry, sheltered place: this machine is only designed for use under dry conditions, and must not be used or stored outdoors under humid conditions.
- Do not park the machine near combustible materials, powders, gases or liquids.
- Stop the machine on a flat surface.
- Switch off the machine and remove the battery from the battery compartment.
- If the machine is left unattended, it must be protected from any accidental movements

 **CAUTION:**

- In order to prevent the unauthorized use of the machine, the power supply must be interrupted, switch the machine off using the main switch, remove the battery from the battery compartment

 **ATTENTION:**

- The machine must only be stored under temperature conditions ranging from 0 °C to +40 °C. The humidity level must be between 30% and 95%.

## MAINTENANCE

 **DANGER:**

- In order to avoid short-circuits when working in the vicinity of electrical components, do the following: avoid the use of non-insulated tools; do not place or allow metallic objects to fall upon the electrically powered components; remove any rings, watches and/or clothing with metallic parts that might come into contact with the electrically powered components.

**WARNING:**

- Read all the relevant instructions carefully before performing any maintenance/repair operations.
- If the machine does not work properly, check this is not caused by failure to carry out routine maintenance. Otherwise, ask for intervention of the authorized technical assistance centre.
- Restore all electrical connections after any maintenance interventions.

**CAUTION:**

- For any maintenance work, switch the machine off using the main switch, remove the battery from the battery compartment.
- Avoid contact with moving parts. Do not wear loose clothing or jewelry and tie long hair back.

**ATTENTION:**

- Never tamper with the machine's protection devices for any reason; always follow the supplied routine maintenance instructions scrupulously.
- If any issues are encountered while using the machine, check to make sure that these are not due to a lack of proper maintenance. Otherwise, request the intervention of authorized personnel or an Authorized service centre.
- When replacing parts, ask for ORIGINAL spare parts from a Dealer or an authorized retailer.
- In order to ensure the machine is safe to use and operates properly, carry out the maintenance work specified in this manual.
- Do not clean the machine with direct or pressurized jets of water, or with corrosive substances.
- Have the machine checked by an authorized technical assistance centre every year.
- When disposing of consumable materials, observe the laws and regulations in force. Once the machine has reached the end of its service life, the materials contained within it must be disposed of in an appropriate manner, keeping in mind that the machine itself has been built using fully recyclable materials.
- All repairs must be carried out by qualified personnel.
- Do not physically change the design characteristics of the machine.
- Use spare parts provided by authorized service centre.
- Wear personal protective equipment as required and as suggested in the manual.

## TRANSPORT

**WARNING:**

- **Drain both tanks before transport.**
- Move the squeegee to the rest position.
- Remove the battery from the battery compartment.

## DISPOSAL

**ATTENTION:**

- The machine should not be abandoned at the end of its working life because of the presence of toxic-harmful substances in it, which are subject to regulations that regulate their disposal in special centers.

The descriptions contained in this document are not binding. The company therefore reserves the right to make any modifications at any time to elements, details, or accessory supply, as considered necessary for reasons of improvement or manufacturing/commercial requirements. The reproduction, even partial, of the text and drawings contained in this document is prohibited by law.

The company reserves the right to make any technical and/or supply modifications. The images are for reference purposes only, and are not binding in terms of design and supply.

## SYMBOLS USED IN THE MANUAL

-  **Open book symbol with an "i"**  
Indicates the need to consult the instruction manual.

---

-  **Open book symbol**  
Tells the operator to read the user manual before using the device.

---

-  **Covered place symbol:**  
The operations preceded by this symbol must always be carried out in a dry, covered area.

---

-  **Warning symbol:**  
Carefully read the sections preceded by this symbol meticulously following the instructions indicated for the safety of the operator and the device.

---

-  **Protective gloves symbol:**  
Always wear protective gloves, to avoid the risk of serious injury to your hands.

---

-  **Tool symbol:**  
Indicates the need to use tools not included in the supply.

---

-  **Explosion risk symbol:**  
Indicates that the battery may explode in certain conditions, if not handled in accordance with the directives indicated in the manufacturer's manual.

---

-  **Disposal symbol:**  
Carefully read the sections marked with this symbol for disposing of the appliance.

---

-  **Recycling symbol:**  
Tells the operator to carry out the operations in compliance with environmental regulations in force in the place where the appliance is being used.


---

-  **Tank drainage symbol:**  
Informs the operator that the recovery tank must be emptied every time the solution tank is filled.


---

-  **Recycling symbol:**  
Carefully read the sections marked with this symbol in order to fill the solution tank correctly.


## SYMBOLS USED ON THE MACHINE

-  **Main switch symbol:**  
Used on the central rear of the machine to indicate the main switch.

---

-  **Solenoid valve switch symbol:**  
Used on the rear of the machine to indicate the solenoid valve control switch.


---

-  **Lifting point symbol:**  
Used to indicate the location of the elements for lifting the machine or else moving the mobile parts of the machine.

---

- "OPEN" symbol:**  
OPEN Used on the upper part of the appliance to indicate the position of the handle for opening the front carter.

---

-  **Warning symbol not to rotate the machine:**  
Indicates that the machine must not be rotated when the tanks are full.

## PURPOSE AND CONTENT OF THE MANUAL

The aim of this manual is to provide customers with all the information needed to use the machine in the safest, most appropriate and most autonomous way. This includes information concerning technical aspects, safety, operation, downtime, maintenance, spare parts and scrapping. The operators and qualified technicians must carefully read the instructions in this manual before carrying out any operations on the machine. If in doubt about the correct interpretation of instructions, contact your nearest Customer Service Centre to obtain the necessary clarifications.

## TARGET GROUP

This manual is written both for operators and for qualified machine maintenance technicians. Operators must not perform operations that should be carried out by qualified technicians. The manufacturer is not liable for damages resulting from failure to comply with this prohibition.

## PRESERVATION OF THE USER

The following document must be stored in its special pouch close to the machine, protected from liquids and anything else that could compromise its legibility.

## ON CONSIGNMENT OF THE MACHINE

When the machine is consigned to the customer, an immediate check must be performed to ensure all the material mentioned in the shipping documents has been received, and also to check the machine has not suffered damage during transportation. If this is the case, the carrier must ascertain the extent of the damage at once, informing our customer service office. It is only by prompt action of this type that the missing material can be obtained, and compensation for damage successfully claimed.

## INTRODUCTORY COMMENT

Any machine can only work properly and effectively if used correctly and kept in full working order by carrying out the maintenance operations described in the attached documentation. We therefore suggest you read this instruction booklet carefully and read it again whenever difficulties arise while using the machine. If necessary, remember that our assistance service (organized in collaboration with our dealers) is always available for advice or direct intervention.

## IDENTIFICATION DATA


For technical assistance or to request replacement parts, always give the model, the version and the serial number (written on the relevant plate).

## TECHNICAL DESCRIPTION

The **W01C** is a floor scrubbing machine that cleans a wide range of flooring and dirt types by means of the mechanical action of a cylindrical brush and the chemical action of a water-detergent solution, collecting the dirt as it moves forward that has been removed and the detergent solution that has not been absorbed by the floor. The machine must only be used for this purpose.

## TECHNICAL DESCRIPTION

This machine was designed and built for the cleaning (scrubbing and drying) of smooth, compact flooring in the commercial, residential and industrial sectors by a qualified operator in proven safety conditions. The machine is not suitable for cleaning rugs or carpets. The machine is only suitable for use in closed (or at least covered) places.

 **WARNING:** The machine is not suitable for use in the rain, or under jets of water.

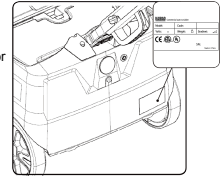
**IT IS FORBIDDEN** to use the machine for picking up dangerous dusts or inflammable liquids in places with an explosive atmosphere. In addition, it is not suitable as a means of transport for people or objects.

## SAFETY

Operator cooperation is paramount for accident prevention. No accident prevention program can be effective without the full cooperation of the person directly responsible for machine operation. The majority of occupational accidents that happen either in the workplace or whilst moving are caused by failure to respect the most basic safety rules. An attentive, careful operator is most effective guarantee against accidents and is fundamental in order to implement any prevention program.

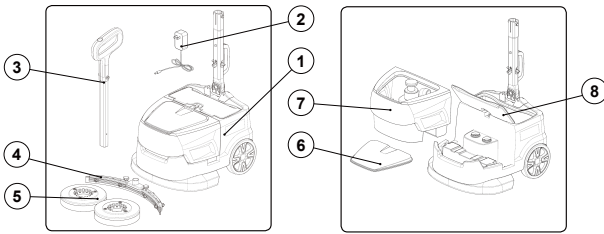
## SERIAL NUMBER PLATE

The serial number plate is located at the rear of the machine and indicates its general characteristics, especially the serial number. The serial number is a very important piece of information and should always be provided with any request for assistance or purchase of spare parts.



TECHNICAL DATA	U/M	W01C
Total power	W	150
Working width	mm	380
Working capacity, up to	m <sup>2</sup> /h	1200
Central brush (number / (diameter x length))	No. / (Ømm)	2 / (185)
Brush motor (rated)	V/W	24 / 100
Suction motor (rated)	V/W	24 / 70
Maximum gradient	°	10
Solution tank capacity	l	4.8
Recovery tank capacity	l	5.8
Machine body length	mm	428
Machine body height	mm	280
Overall dimensions in standby position (L x h x w)	mm	428 x 1080 x 413
Overall dimensions in idle position (L x h x w)	mm	335 x 836 x 413
Rated battery voltage	V / mAh	25.6 / 6000
Battery weight	kg	1
Machine weight when empty (machine + brush + squeegee)	kg	9
Machine weight in transport (machine + battery + brush + squeegee)	kg	10
Machine weight ready to use (machine + battery + detergent solution + brush + squeegee)	kg	11.4
Sound pressure level (ISO 11201) - L <sub>pa</sub>	dB (A)	<70
Uncertainty K <sub>pa</sub>	dB (A)	1.5
Hand vibration level (ISO 5349)	m/s <sup>2</sup>	< 2.5
Vibration measurement uncertainty		4%

## SPARE PARTS

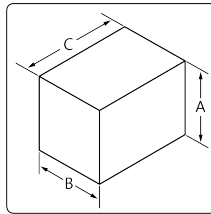


POS.	CODE	QTY	DESCRIPTION
1	440974	1	MACHINE BASE
2	441033	1	BATTERY CHARGER
3	439888	1	CONTROL HANDLEBAR
4	224800	1	SQUEEGEE RUBBER KIT
5	224615	2	BRUSH
6	441023	1	RECOVERY FILLING CAP
7	227332	1	RECOVERY TANK
8	224619	1	SOLUTION FILLING CAP

## HANDLING THE PACKAGED MACHINE

The machine is delivered in specific packaging. These packaging elements (plastic bags, clips, etc.) are potential sources of danger and must be kept out of the reach of children, persons with intellectual disabilities, etc. The overall weight of the machine plus its packaging is 12 kg. The packaging dimensions are as follows:

	U/M	WD 1 C
A	mm	414
B	mm	450
C	mm	512



## HOW TO UNPACK THE MACHINE

The procedure for unpacking the machine is as follows:

- Place the lower part of the outer packaging in contact with the floor.

**CAUTION:** Use the pictograms printed on the box as reference.

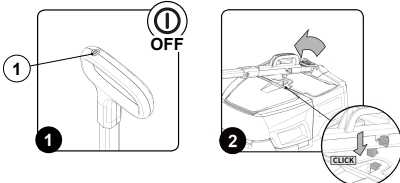
- Open the outer box.
- Remove the accessories from the box and carefully lay them on the ground.
- Take the machine out of the box.

**ATTENTION:** it is recommended that all the packaging components be kept for any future machine transportation.

**CAUTION:** these operations must be carried out using protective gloves to avoid any possible contact with the edges or tips of metal objects.

## HOW TO MOVE THE MACHINE

The procedure for the safe transportation of the machine is the following:

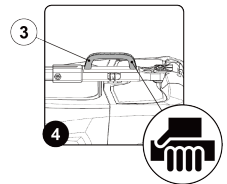
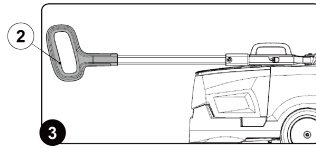


- If the machine is running, switch it off by pressing the main switch (1) (Fig.1).
- Make sure the recovery tank is empty. If it isn't, empty it completely.
- Make sure the solution tank is empty. If it isn't, empty it completely.
- Block the handlebar in the horizontal position. Rest your foot on the body of the machine to prevent it from tilting, then push the handle away from you until it snaps into the horizontal position (Fig.2).

**CAUTION:** do not rest your foot on the main switch.

- Rotate the stop lever of the command handlebar (2) in the direction of the arrow (Fig.3).
- To lift the machine off the floor, use the handle (3) on its rear (Fig.4)

**CAUTION:** When transporting on vehicles, secure it firmly in place in compliance with the directives in force so that it cannot slide or tip over.



**CAUTION:** these operations must be carried out using protective gloves to avoid any possible contact with the edges or tips of metal objects.

**ATTENTION:** The machine must not be transported or parked in its rest position when the solution tank and recovery tank are full.

## BATTERY TYPE

To power the appliance, use only the battery supplied in the packaging or one supplied by a specialised technician. **OTHER BATTERY TYPES CANNOT BE USED.** The machine is powered by a lithium-ion battery. The battery compartment can accommodate a single battery slot at 25.55V.

**WARNING:** for the maintenance and disposal of the battery, refer to the document supplied by the battery manufacturer.

## RECHARGING THE BATTERY

The battery must be charged prior to the first use, and when it doesn't provide enough power for tasks that could formerly be performed without difficulty. To recharge the battery, proceed as follows:

- Take the machine to the designated place for charging the battery.

**WARNING:** the place for charging the battery should be suitably ventilated.

- If the machine is running, switch it off by pressing the main switch (1) (Fig.1).
- Block the handlebar in the vertical position.

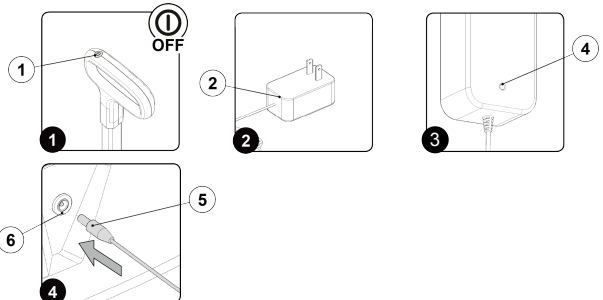
**CAUTION:** during this operation, do not rest your foot on the machine.

- Connect the power plug (2) to the mains supply (Fig.2).

**CAUTION:** before connecting the battery charger to the socket, make sure the characteristics of the mains supply correspond to those of the battery charger.

**WARNING:** the battery charger must only be used in a covered place.

**WARNING:** make sure the green LED (4) on the battery charger lights up when you enable the battery charger base circuit (Fig.3). This LED indicates that the battery charger circuit is correctly powered.



- Insert the battery charger power cable plug (5) in the socket (6) on the battery (Fig.4).

**WARNING:** make sure the green LED (4) on the battery charger lights up when you enable the charger (Fig.3). This LED indicates that the battery charger circuit is correctly powered.

**CAUTION:** before inserting the plug (5) in the socket (6), make sure the battery charger housing compartment is not dirty (dust, condensation or other types of liquid).

**CAUTION:** make sure the red LED (4) on the battery charger lights up when you insert the plug(5) in the socket (6). This LED indicates that the battery is recharging.

- Perform a complete battery charging cycle.

**ATTENTION:** the red LED (4) remains on until the battery is fully charged. When the recharging cycle has ended, the red LED goes off and the green LED comes on.

**ATTENTION:** The charger and the battery can be left connected to the power outlet. The red LED (4) lights up when the charger occasionally tops up the battery.

**ATTENTION:** the red charge status LED (4) does not provide any indication of the battery charge level.

**ATTENTION:** during the charging phase, the battery may overheat. This is normal and does not mean there is any problem with the battery.

**⚠ ATTENTION:** if the battery used in this machine is over-charged, this may cause a risk of fire, explosion or chemical burns.

7. Once the charging cycle is completed, remove the plug (2) on the battery charger from the mains socket.

**⚠ ATTENTION:** To prevent damaging to the mains socket, disconnect the plug from the mains socket by directly pulling the plug and not the power cable.

8. Take the power cable plug (5) out of the socket (6) on the battery.

## PREPARATION OF MACHINE

1. Take the package to the dedicated maintenance area.
2. Remove the machine and all the accessories from the box.
3. Connect the connector (2) between the connecting rod (1). (Fig.1).
4. Fix the handlebar to the joint using the screw and nut (3), making sure the hole on the handlebar coincides with the hole on the joint (Fig.2).

**⚠ N.B.:** the screwdriver is not supplied.

5. Block the handlebar in the horizontal position. Rest your foot on the body of the machine to prevent it from tilting, then push the handle away from you until it snaps into the horizontal position (Fig.3).

**⚠ CAUTION:** do not rest your foot on the main switch.

## PREPARING TO WORK

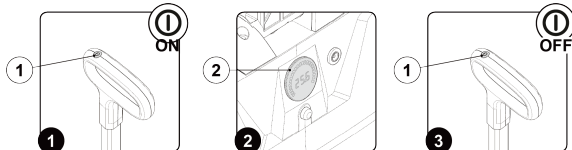
Before beginning to work, it is necessary to:

**🔋 N.B.:** before beginning the first work cycle, fully recharge the battery (read "RECHARGING THE BATTERY").

1. Before using the machine, make sure it is in a good, safe working condition. If everything is not in order, the machine must not be used.

2. Rotate the handlebar so it is vertical.

**⚠ CAUTION:** During this operation, do not rest your foot on the machine.



3. Start the machine using the main switch (1) (Fig.1).

**ⓘ N.B.:** If the LED of the main switch (2) (Fig.2) is lit up, this means there is electrical continuity.

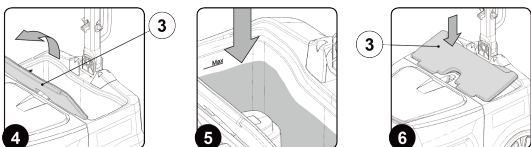
4. Check the battery charge level. There are four LEDs (2) on the battery to show the charge percentage (Fig.2). If all the LEDs are lit up, the battery is fully charged; if they are all switched off, the battery is completely run down.

5. Switch off the machine using the main switch (1) (Fig.3).

6. Make sure the condition of the squeegee rubbers is suitable for the work you want to carry out. If it isn't, perform the necessary maintenance (read "MAINTENANCE").

7. Make sure the condition of the brush is suitable for the work you want to carry out. If it isn't, perform the necessary maintenance (read "MAINTENANCE").

**⚠ CAUTION:** these operations must be carried out using protective gloves to avoid any possible contact with the edges or tips of metal objects.



8. Remove the detergent solution filling cap (3) on the solution tank (Fig.4).

9. Add water and an appropriate amount of **low-foam detergent** and do not exceed the water level line (Fig.5)

10. Fill with clean water, at a temperature no higher than 50°C and no lower than 10°C.

**🚰 N.B.:** The formation of excess foam could damage the vacuum motor, so use only the minimum amount of detergent that is necessary.

**🚰 N.B.:** always use detergents whose manufacturer's label indicates their suitability for scrubbing machines. Do not use acid or alkaline products or solvents without this indication. Acid or alkaline maintenance detergents can be used, as long as they have pH values between four and ten, and do not contain: oxidizing agents, chlorine or bromine, formaldehyde, mineral solvents.

**⚠ CAUTION:** protective gloves should always be worn before handling detergents or acidic or alkaline solutions, to avoid serious injury to the hands.

**🚰 N.B.:** always use **low-foam detergent**. To avoid the production of foam, put a minimum quantity of **anti-foam liquid** in the recovery tank before starting to clean. Do not use pure acids.

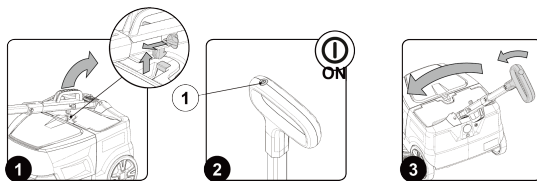
11. Replace the detergent solution filling cap (3) in its seat on the solution tank (Fig.6).

**🚰 N.B.:** it is good practice to empty the recovery tank every time you top up the solution tank level.

## WORK

Before beginning to work, it is necessary to:

1. Carry out the operations described in the "PREPARING TO WORK" chapter.
2. Release the handlebar from its vertical position and rotate it towards you (Fig.1).



**⚠ CAUTION:** During this operation, do not rest your foot on the machine.

3. Adjust the control handlebar.
4. Start the machine using the main switch (2) (Fig.2).

**ⓘ N.B.:** if the LED of the main switch is lit up, this means there is electrical continuity.

**ⓘ N.B.:** As soon as the machine starts, the LEDs will light up and both the brush motor and the suction motor will start working.

5. The machine will now begin to work with full efficiency until the battery runs down or until the detergent solution has finished.

**ⓘ N.B.:** The joint on the body of the machine provides greater manageability. To make a left-hand turn, rotate the handle to the left (Fig.3); rotate it to the right when you want to turn right.

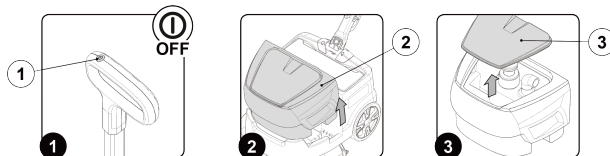
**ⓘ N.B.:** if you need to turn back while you are working, just rotate the machine by 180° by turning the control handle.

**ⓘ N.B.:** if the charge level reaches a certain value during use, the brush motor and the electric pump will stop working. After a few seconds, the suction motor will switch off automatically as well. Both the LED of the main switch and that of the electric pump control switch will remain ON.

## AT THE END OF THE WORK

At the end of the work, and before carrying out any type of maintenance, perform the following operations:

1. Switch off the machine using the main switch (1) (Fig.1).
2. Rotate the handlebar so it is vertical.



**⚠ CAUTION:** During this operation, do not rest your foot on the machine.

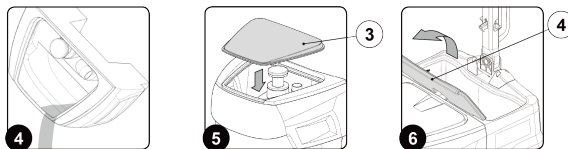
3. Take the appliance to the dedicated dirty water drainage area.

**♻ ATTENTION:** the place designated for this operation must comply with current environmental protection regulations.

**⚠ CAUTION:** these operations must be carried out using protective gloves to avoid any possible contact with the edges or tips of metal objects.

4. Remove the recovery tank (2) from the machine (Fig.2).
5. Remove the lid (3) on the recovery tank (Fig.3).

**⚠ ATTENTION:** protective gloves should always be worn before handling detergents or acidic or alkaline solutions, to avoid serious injury to the hands.

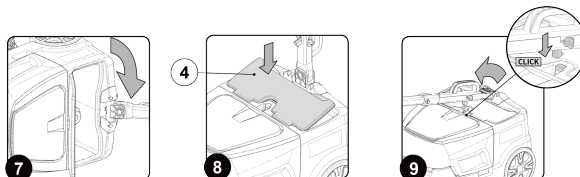


6. Empty the tank (Fig.4).

7. Cover the lid (3) on the recovery tank (Fig.5).

8. Lift the lid of solution tank (4) (Fig.6).

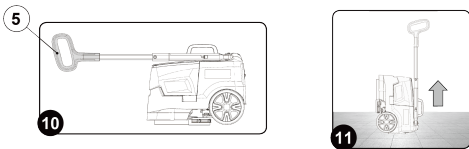
9. Empty the tank (Fig.7).





- Rinse the inside of the tank with a jet of water.
- Cover the lid of the solution tank (4) (Fig.8).
- Block the handlebar in the horizontal position (Fig.9).

**CAUTION:** During this operation, do not rest your foot on the machine.

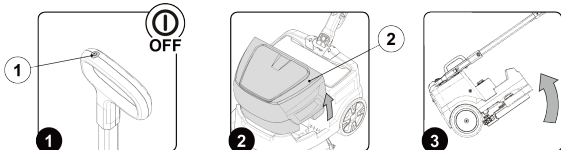


- Take the machine to the designated machine storage place.
- Position the machine with its rear part in contact with the floor (Fig.11).

**WARNING:** Park the machine in an enclosed place, on a flat surface; near the machine there must be no objects that could either damage it, or be damaged through contact with it.

## MAINTENANCE

At the end of the work, and before carrying out any type of maintenance, perform the following operations:



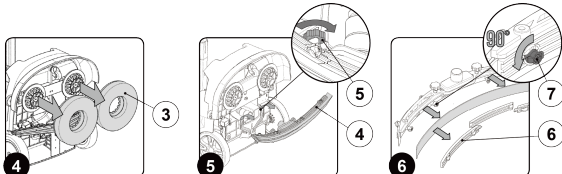
- Switch off the machine using the main switch (1) (Fig.1).

**CAUTION:** During this operation, do not rest your foot on the machine.

- Take the machine to the designated maintenance area.

**N.B. :** the place designated for this operation must comply with current environmental protection regulations.

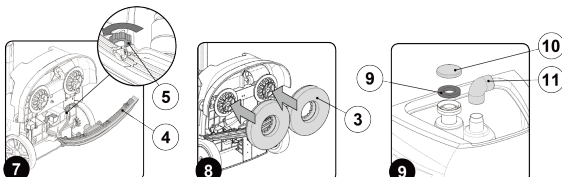
- Remove the recovery tank (2) (Fig.2) and press the arrow (Fig.3) to lift the machine.



- Remove the brush (3) from the machine (Fig.4).

**ATTENTION:** During this operation, keep the control handlebar still, in order to prevent the machine from moving accidentally.

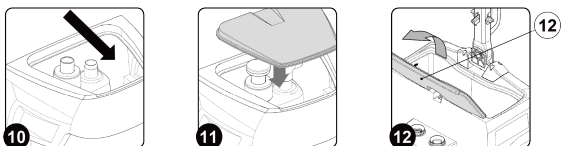
- Clean the brush under running water and remove any impurities present in the bristles of the brush. Check that the bristles are not worn; in the event of excessive wear, replace the brush (the bristles should be at least 15 mm long).
- Unscrew the fixing screw (5) and remove the squeegee rubber kit (4) (Fig.5).
- Rotate the rubber fixing screw (7) 90 degrees to remove the rubber clamp (6) (Fig.6).



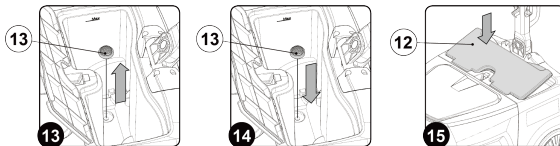
- After cleaning or replacing the rubber, install the machine as it is and tighten the fix screw (5) (Fig.7).
- Reinstall the brush (3) into the machine (Fig.8).

**ATTENTION:** protective gloves should always be worn before handling detergents or acidic or alkaline solutions, to avoid serious injury to the hands.

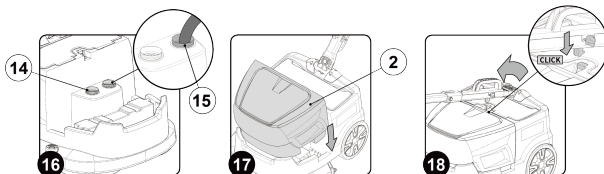
- Remove the guide elbow (11) and the upper cover of the filter (10) in the recovery tank, and clean the filter cotton (9) (Fig.9).



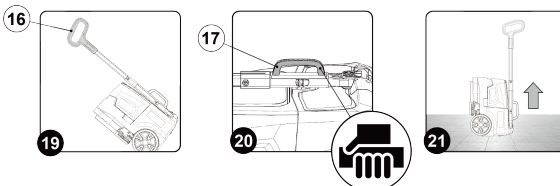
- Rinse the inside of the tank with a jet of water (Fig.10).
- Reinstall the recovery tank and cover the recovery tank cover as it is (Fig.11).
- Remove the lid (12) from the solution tank (Fig.12).
- Rinse the inside of the tank with a jet of water.
- Remove the water filter from the solution tank (13) (Fig.13).



- After cleaning the water filter (13), reinstall the solution tank (Fig.14).
- Covered the solution tank cover (12) (Fig.15).



- Check the air inlet (14) of the machine fan for debris (Fig.16).
- Water pipe flushing machine suction mouth (15) (Fig.16).



- Reseat the recovery tank (2) on the base of the machine (Fig.17).
- Block the handlebar in the horizontal position (Fig.18).
- You can lift the handle (16) to drag the machine (Fig.19).
- You can also lift the handle (17) and lift the machine (Fig.20).

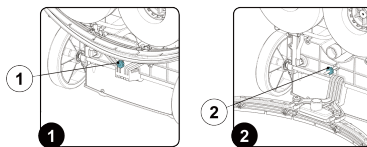
**ATTENTION:** During this operation, do not rest your foot on the machine.

- Take the machine to the specified machine storage location (Fig.21).

**ATTENTION:** Park the machine in an enclosed place, on a flat surface; near the machine there must be no objects that could either damage it, or be damaged through contact with it.

## SQUEEGEE RUBBER KIT ADJUSTMENT

- If the rubber skin is too close to the ground, you need to raise your head. First loosen the locking nut (1), then raise the limit nut (2), and finally tighten the locking nut (1).



- Conversely, if the rubber is not fit enough, then loosen the locking nut (1) first, then lower the limit nut (2), and finally tighten the locking nut (1).

## TROUBLESHOOTING

This chapter lists the most common problems linked with the use of the machine. If you are unable to resolve the problems with the information given here, please contact your nearest assistance centre.

PROBLEM	POSSIBLE CAUSE	SOLUTION
THE MACHINE DOES NOT START	The main switch is OFF.	Press the main switch.
	Check that the battery is correctly inserted in the machine.	Insert the battery correctly in the machine.
	Check the battery charge level, view the LED on the rear of the machine.	If the battery charge level is critical, perform a complete recharge cycle.
THE BATTERY HAS NOT BEEN CHARGED CORRECTLY	The power supply cable plug is not correctly inserted in the battery charger power cable is connected to the socket on the battery charger base.	Check that the plug on the battery charger power cable is connected to the socket on the battery charger base.
	The power supply cable plug is not correctly inserted in the mains socket.	Check that the battery charger power supply cable plug is connected to the mains socket.
	The characteristics of the mains power supply do not correspond to those required by the battery charger.	Check that the characteristics in the battery charger plate are the same as those of the mains supply.
	The LED on the battery charger base flashes repeatedly.	Referring to the battery charger use and maintenance manual, check the meaning of the flashing signals that the battery charger emits during the battery recharge stage.

THE MACHINE HAS A VERY LOW WORK AUTONOMY	Check the battery level and check that the voltage on the power display is not less than 23V.	If the battery charge level is critical, perform a complete recharge cycle.
NOT ENOUGH DETERGENT SOLUTION ON THE BRUSH	The quantity of detergent solution in the water system is not sufficient for the work to be carried out.	Fill the solution tank with detergent.
	Detergent solution filter obstructed.	Remove the obstructions from the detergent solution filter (read "MAINTENANCE").
THE MACHINE DOES NOT CLEAN CORRECTLY	The machine does not start.	Read the section "THE MACHINE DOES NOT START".
	Not enough detergent solution comes out.	Read the section "NOT ENOUGH DETERGENT SOLUTION ON THE BRUSH".
	The brush is not correctly inserted in the machine.	Insert the brush correctly in the machine.
	The brush bristles are subject to excessive wear	Check the condition of the brush, and replace it if necessary (read "MAINTENANCE").
THE SQUEEGEE DOES NOT DRY PERFECTLY	The vacuum device is obstructed	Remove the obstructions from the squeegee body (read "MAINTENANCE").
		Remove the obstructions from the vacuum duct (read "MAINTENANCE").
		Remove the obstructions from the recovery tank cover (read "MAINTENANCE").
EXCESSIVE FOAM PRODUCTION	The detergent being used is not suitable.	Check that a low foam detergent has been used.
	The floor is not very dirty.	Dilute even more the detergent inside the solution tank.
THE DEVICE DOES NOT VACUUM CORRECTLY	The recovery tank is full	Empty the recovery tank (read the chapter "AT THE END OF THE WORK").
	The vacuum device is obstructed	Read the section "THE SQUEEGEE DOES NOT DRY PERFECTLY".

## DISPOSAL

To dispose of the machine, take it to a demolition centre or an authorised collection centre. Before scrapping the machine, it is necessary to remove and separate out the following materials, then send them to the appropriate collection centers in accordance with the environmental hygiene regulations currently in force:

- Brush
- Electric and electronic parts\*
- Battery
- Plastic parts
- Metallic parts

(\* ) In particular, contact your distributor when scrapping electric and electronic parts.