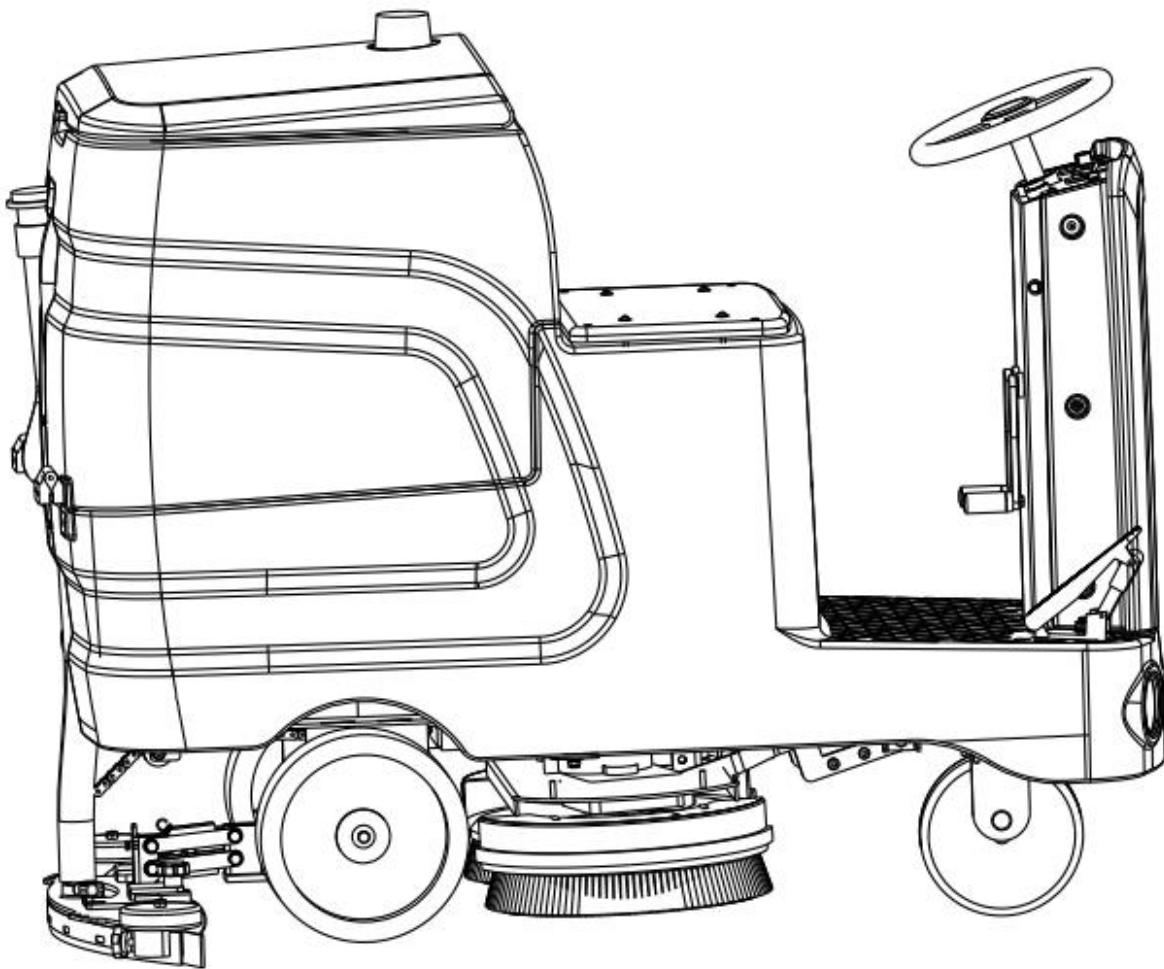




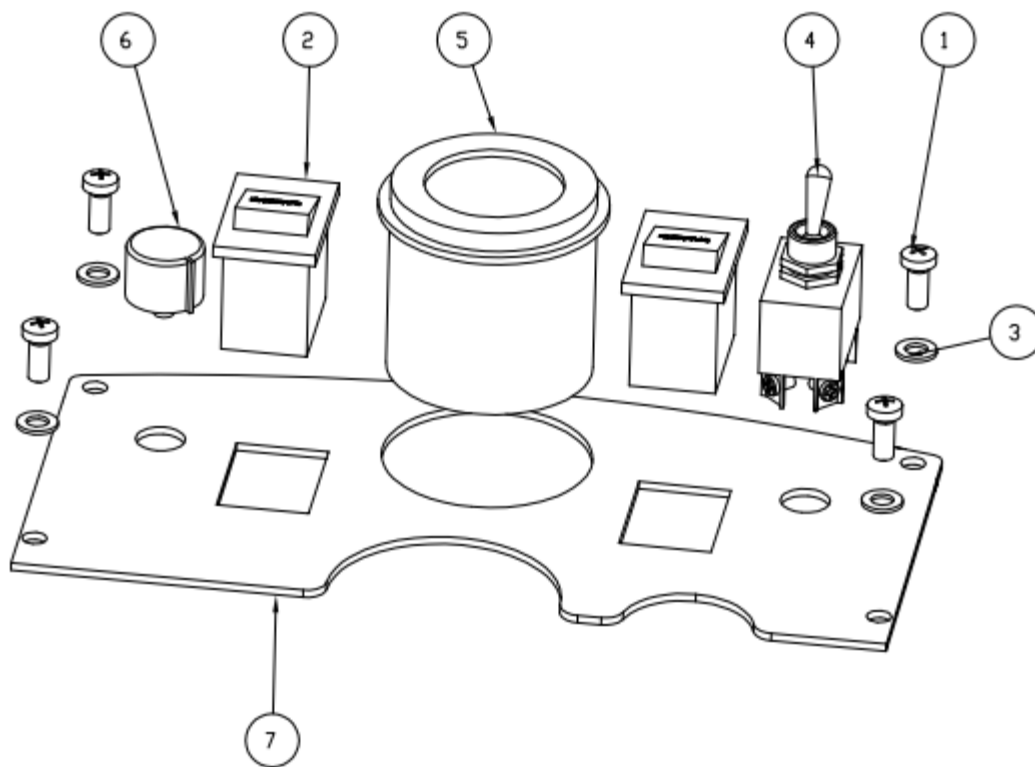
— SCHEMATIC DRAWINGS —

Scrubber Dryer RO 22

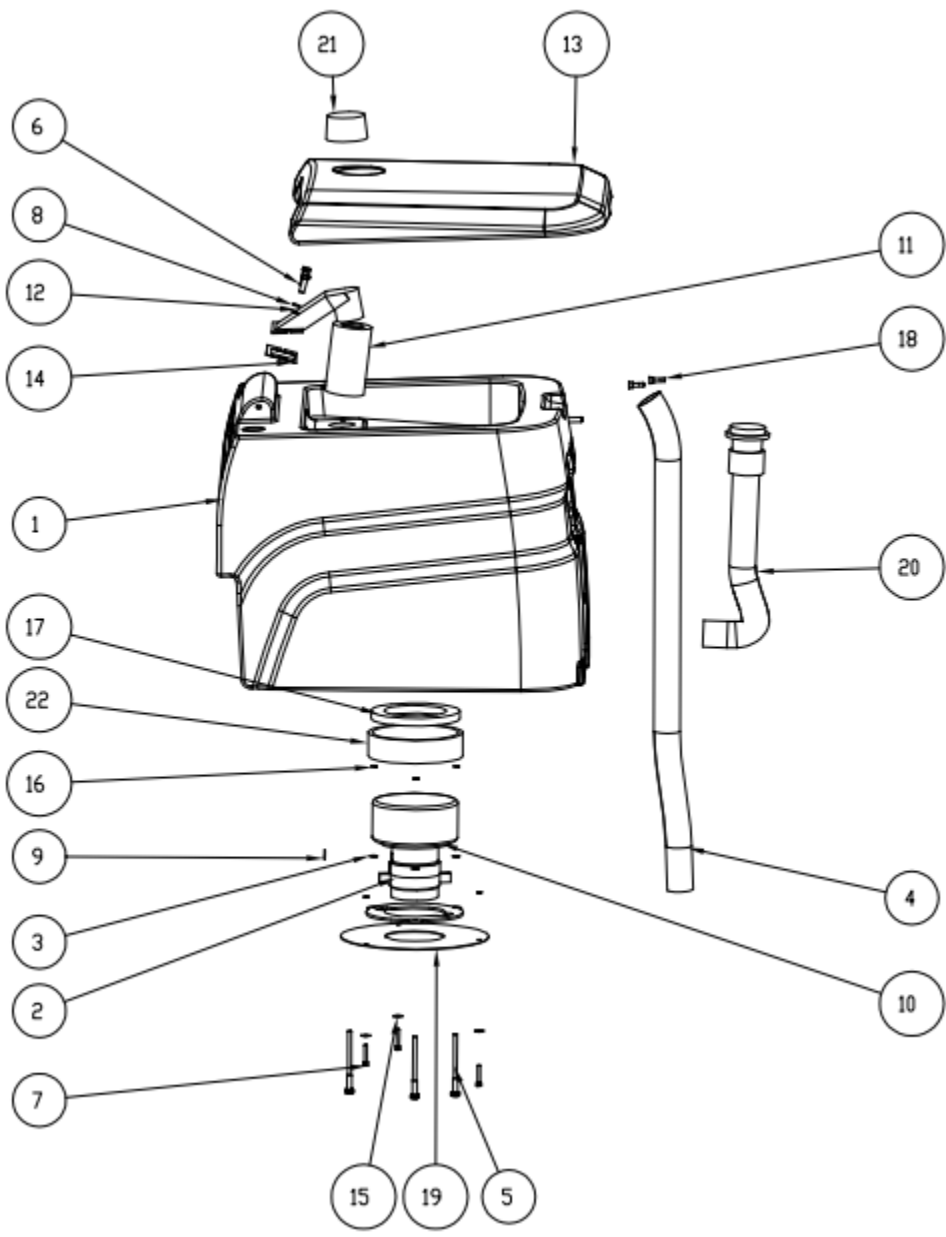


Content

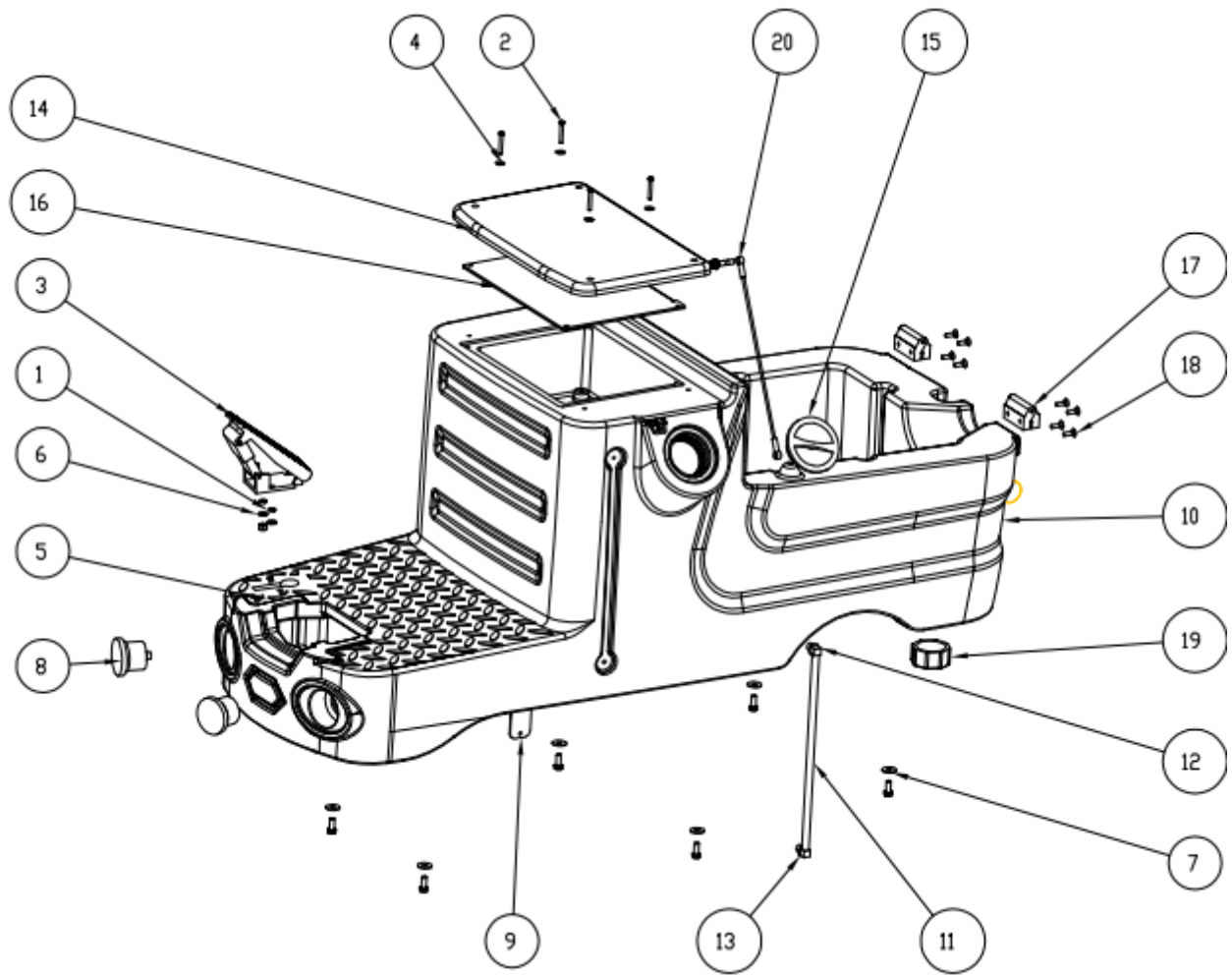
- 1. ELECTRIC CABINET ASSEMBLY3
- 2. RECOVERY TANK ASSEMBLY4
- 3. SOLUTION TANK ASSEMBLY5
- 4. NOSE ASSEMBLY.....7
- 5. FRAME ASSEMBLY9
- 6. SUPPORT FRAME ASSEMBLY10
- 7. SQUEEGEE ASSEMBLY11



	Part No.	DESCRIPTION	Quantity
1	G010123	Pan head cross screw M5 * 12 stainless steel	4
2	E010102	Rocker switch	2
3	G010172	Flat washer Φ 5* Φ 10 * 1 stainless steel	4
4	E010142	Forward and backward switch	1
5	E010130	Power indicator 24V	1
6	E010129	Speed control knob	1
7	A010145	Display panel 2	1

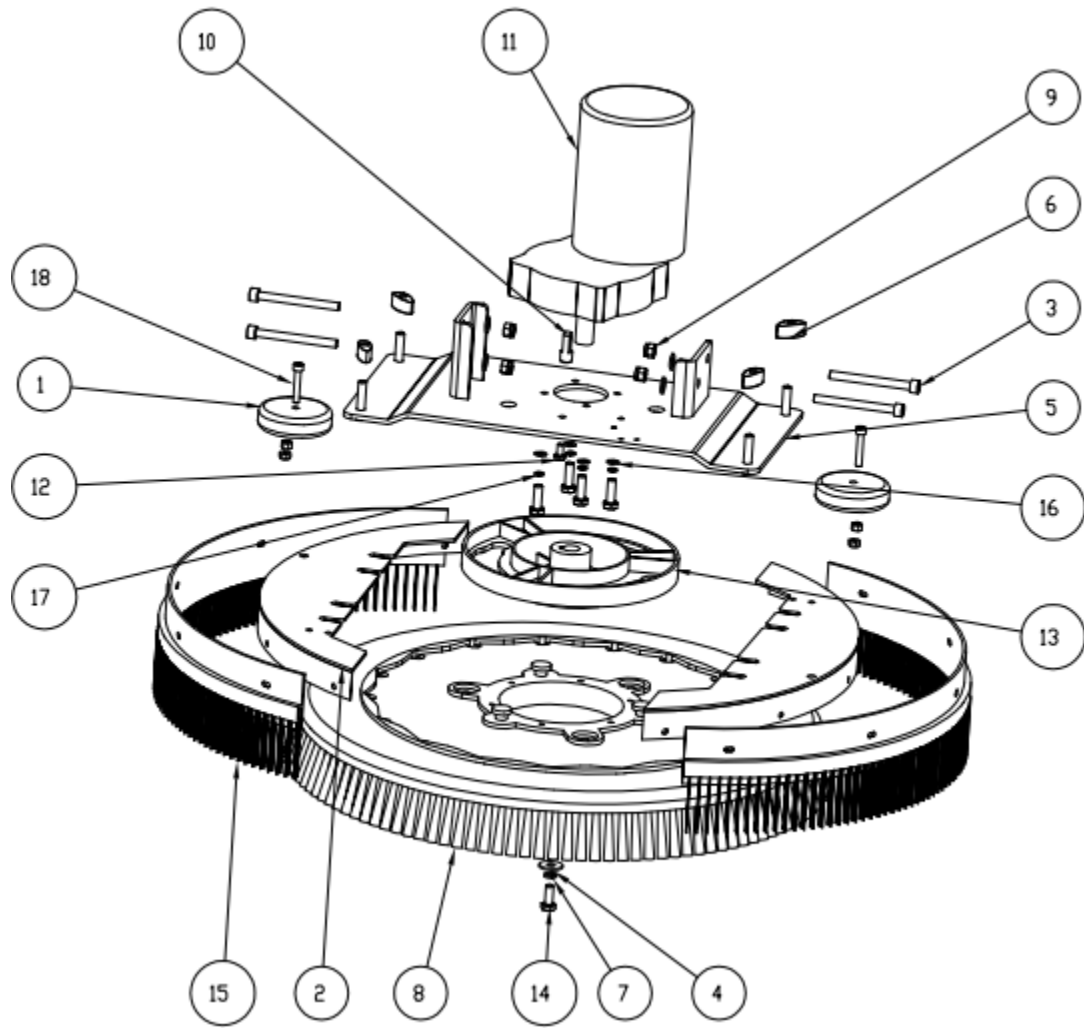


	Part No.	DESCRIPTION	Quantity
1	B010106	Sewage tank 560	1
2	G010168	Spring washer M5 stainless steel	3
3	G010175	Flat washer Φ 6* Φ 12 * 1 stainless steel	3
4	B010143	Dirt suction pipe Φ 38*1000 (01+06)	1
5	G010131	Hexagon socket head cap screw M6 * 16 stainless steel	3
6	G010143	M6-35 outer hexagon bolt	2
7	G010153	Hexagonal M8 * 25 stainless steel	3
8	G010174	Flat washer Φ 5* Φ 15 * 1.5 stainless steel	2
9	G010177	Flat washer Φ 8* Φ 16 * 1.5 stainless steel	1
10	E010109	Suction motor 24V 500W air outlet from two-layer side pipe	1
11	B010153	Suction port cage	1
12	B010151	Suction port body	1
13	B010107	Sewage tank cover 560	1
14	B010152	Gasket of dirt suction port	1
15	G010172	Flat washer Φ 5* Φ 10 * 1 stainless steel	3
16	G010169	Spring washer M6 stainless steel	3
17	B010175	Sealing ring of suction motor Φ 145* Φ 90*10	1
18	G010153	M8 * 25 outer hexagon screw	2
19	A010114	Cover plate of suction motor	1
20	B010139	Sewage pipe Φ 38*400 (01+09)	1
21	E010151	Warning light 24V	1
22	B010176	Suction motor silencing cotton 650 * 100	1

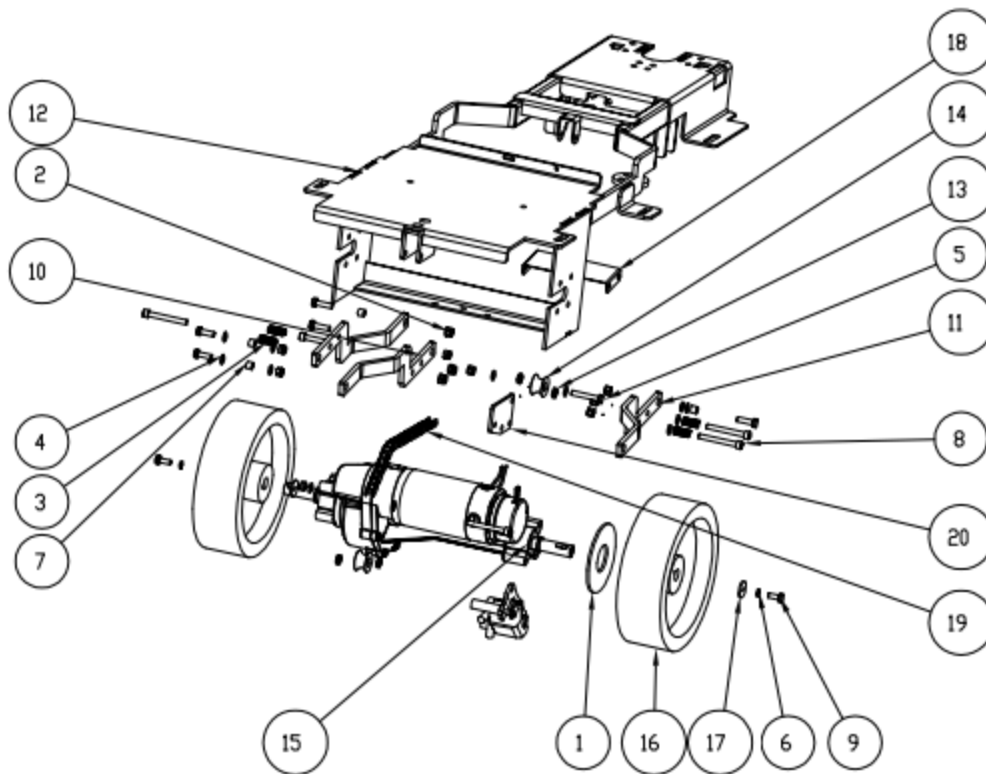


	Part No.	DESCRIPTION	Quantity
1	G010170	Spring washer M8 stainless steel	7

2	G010125	Pan head cross screw M5 * 25 stainless steel	4
3	E010161	Accelerator pedal 24V	1
4	G010172	Flat washer Φ 5* Φ 10 * 1 stainless steel	6
5	G010107	Self locking nut M8 stainless steel	2
6	G010177	Flat washer Φ 8* Φ 16 * 1.5 stainless steel	2
7	G010178	Flat washer Φ 8* Φ 24 * 2 stainless steel	6
8	E010145	Round lamp 2.5 "24V	2
9	A010162	Filter holder	1
10	B010105	Clean water tank 560	1
11		Water level display tube Φ 12*	1
12		Silicone stopper	2
13	B010191	Water level plastic elbow Φ twelve	2
14	B010172	cushion	1
15	B010147	filler cap	1
16	A010150	Seat support plate	1
17	B010181	Plastic hinge 65X65	2
18	G010114	Countersunk hexagonal socket M6 * 20 stainless steel	8
19	B010146	Drain cap	1
20	C010131	Water tank cable 600	1



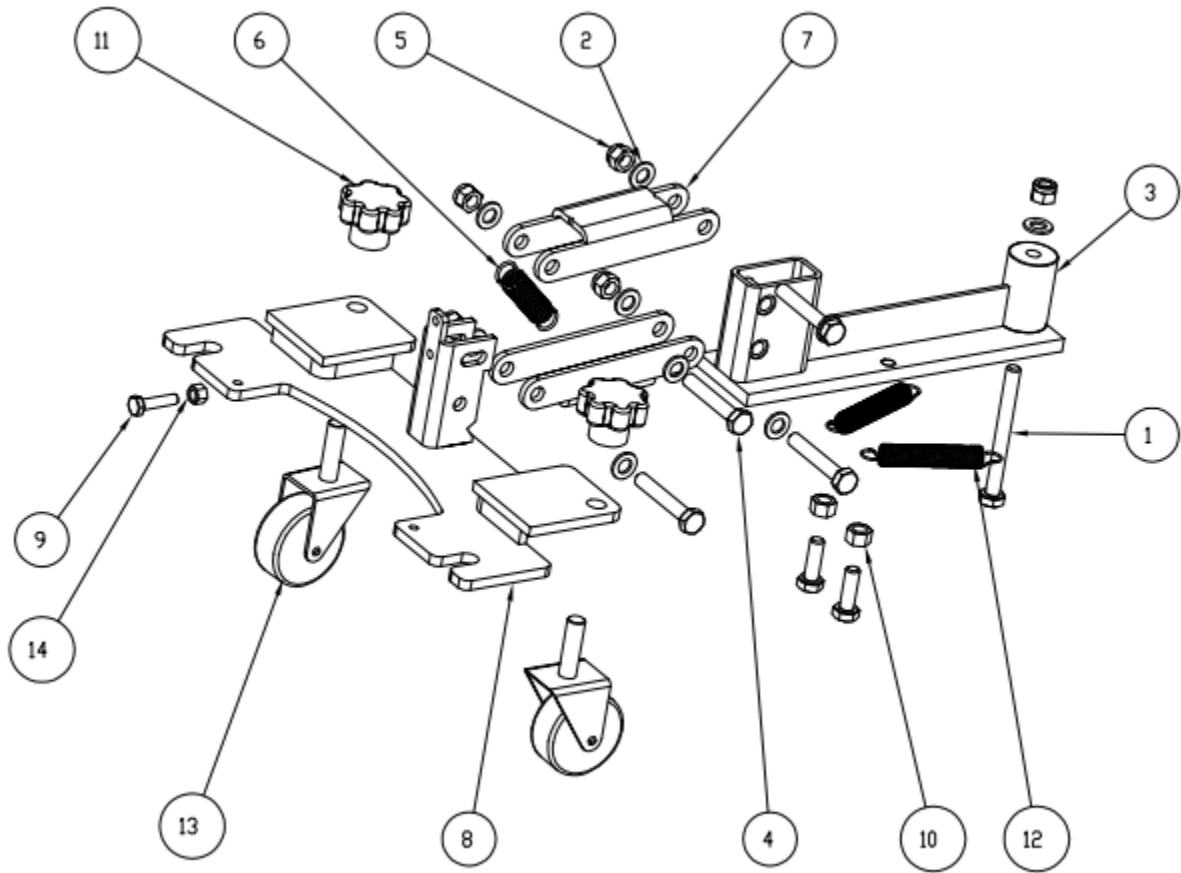
	Part No.	DESCRIPTION	Quantity
1	B010196	Anti-collision wheel Φ 80*25	2
2	A010160	Brush disc shield	2
3	G010135	Hexagon socket head cap screw M8 * 50 stainless steel	4
4	G010178	Flat washer Φ 8* Φ 24 * 2 stainless steel	1
5	A010190	Motor mounting plate (double brush)	1
6	B010218	Plum handle M8 * 40	4
7	G010170	Spring washer M8 stainless steel	1
8	B010127	Pin brush disc 21 inch	1
9	G010107	Self locking nut M8 stainless steel	4
10		Type I connector	1
11	E010101	Brush disc motor 24V 300W Φ eighteen	1
12	G010150	Outer hexagon M6 * 12 stainless steel	1
13	C010134	Pin brush disc buckle	1
14	G010152	Hexagonal M8 * 20 stainless steel	4
15	B010200	Skirt 550mm	2
16	G010175	Flat washer Φ 6* Φ 12 * 1 stainless steel	4
17	G010169	Spring washer M6 stainless steel	4
18	G010131	Hexagon socket head cap screw M6 * 16 stainless steel	2



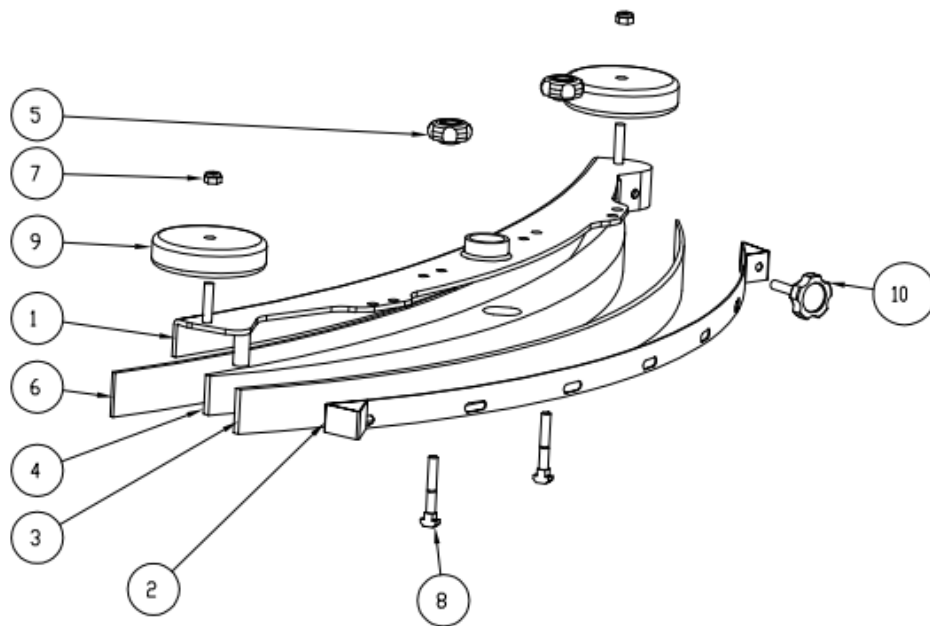
	Part No.	DESCRIPTION	Quantity
1		Brake pads	1
2	G010107	Self locking nut M8 stainless steel	11
3	C010142	Compression spring Φ 2X Φ 12X55	4
4	G010177	Flat washer Φ 8* Φ 16 * 1.5 stainless steel	15
5	G010153	Hexagonal M8 * 25 stainless steel	1
6	G010170	Spring washer M8 stainless steel	3
7	C010122	Copper sleeve Φ 8x Φ 12x9	5
8	G010136	Hexagon socket head cap screw M8 * 70 stainless steel	5

9	G010152	Hexagonal M8 * 20 stainless steel	3
10	A010152	Head pull arm I	1
11	A010153	Head pull arm II	2
12	A010140	Base frame 560	1
13	G010195	Bearing 688 zz	4
14	C010102	Pulley Φ thirty-five	2
15	E010115	Drive motor 24V 500W	1
16	B010157	Drive wheel Φ 256*80	2
17	G010176	Flat washer Φ 8* Φ 32 * 3 stainless steel	2
18	A010148	Buffer plate of brush disc motor	1
19		chain	1
20	A010216	Push rod support	1

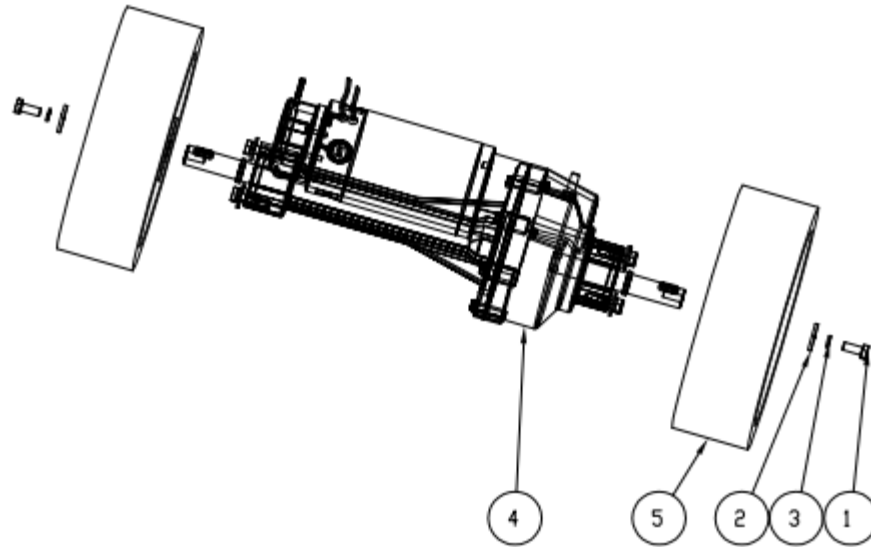
]



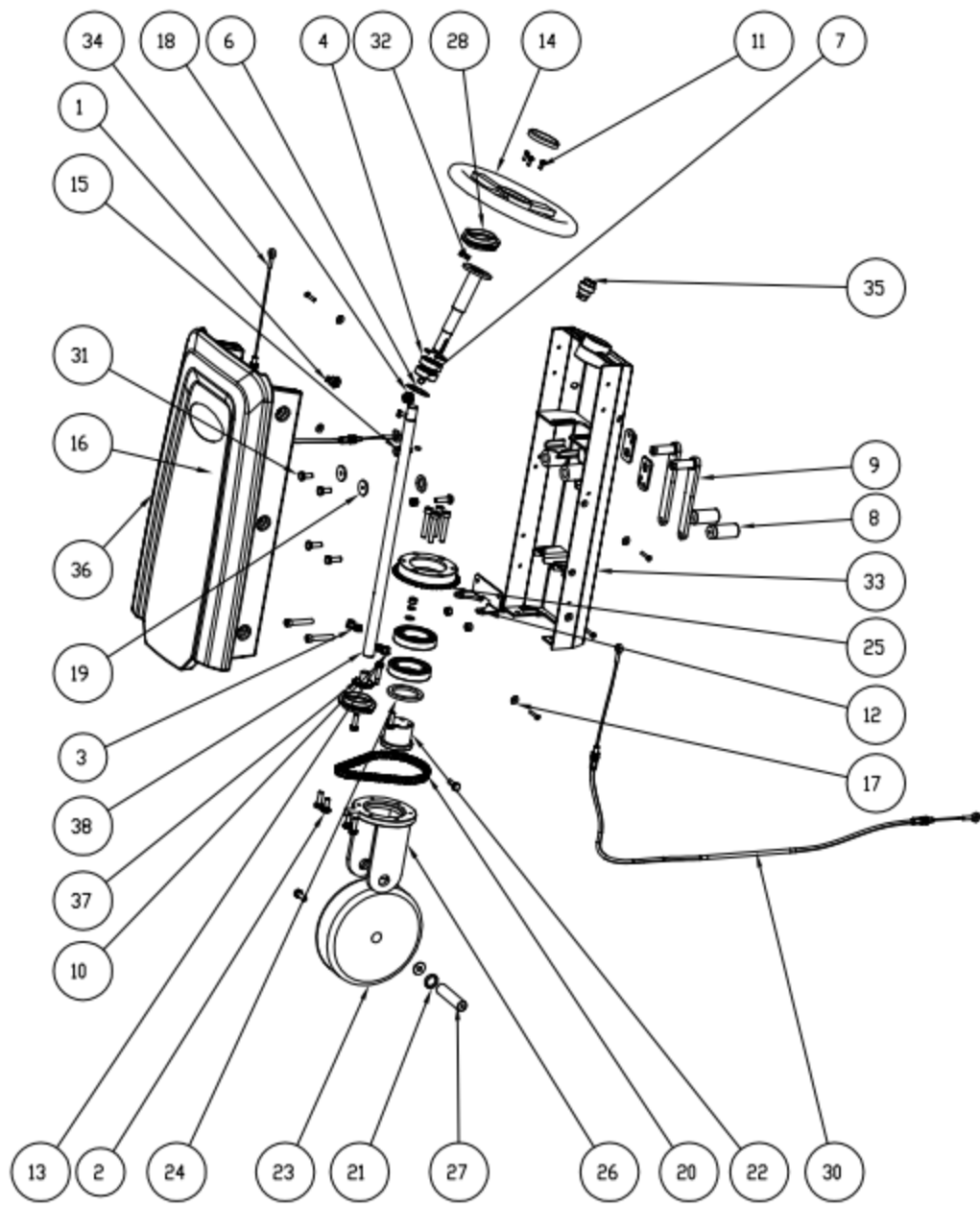
	Part No.	DESCRIPTION	Quantity
1	G010157	External hexagonal M8 * 50 half tooth stainless steel	1
2	G010177	Flat washer Φ 8* Φ 16 * 1.5 stainless steel	9
3	A010155	Suction rack upper support	1
4	G010153	Hexagonal M8 * 25 stainless steel	4
5	G010107	Self locking nut M8 stainless steel	5
6	C010137	drag spring Φ 2X Φ 13X60X34	1
7	A010157	Connecting rod of suction rack	2
8	A010156	Suction lower bracket	1
9	G010143	Outer hexagon M6 * 35 stainless steel	1
10	G010101	Nut M8 stainless steel	2
11	B010195	Bakelite cross handle M10	2
12	C010144	drag spring Φ 1.5X Φ 12X85X62	2
13	B010220	Universal wheel 2-inch screw M10 * 40	2
14	G010100	Nut M6 stainless steel	1



	Part No.	DESCRIPTION	Quantity
1	C010151	Suction raking main body1060	1
2		Suction bar 1060	1
3	B010190	Rear rubber strip52*1160	1
4	B010224	Rubber strip pressing plate1060	1
5	B010194	Bakelite cross handle M8	2
6	B010189	Front rubber strip 52*1091	1
7	G010107	Self locking nut M8 stainless steel	2
8	G010154	Hexagonal M8 * 30 stainless steel	2
9	B010196	Anti-collision wheel Φ 80*25	2
10		Seven star bakelite handle M8X40	1



	Part No.	DESCRIPTION	Quantity
1	G010152	Hexagonal M8 * 20 stainless steel	9
1	G010152	Hexagonal M8 * 20 stainless steel	9
2	G010176	Flat washer Φ 8* Φ 32 * 3 stainless steel	2
2	G010176	Flat washer Φ 8* Φ 32 * 3 stainless steel	2
3	G010170	Spring washer M8 stainless steel	9
3	G010170	Spring washer M8 stainless steel	9
4	E010115	Drive motor 24V 500W	1
4	E010115	Drive motor 24V 500W	1
5	B010157	Drive wheel Φ 256*80	2
5	B010157	Drive wheel Φ 256*80	2



	Part No.	DESCRIPTION	Quantity
1	E010147	Headlight switch	1
2	G010163	Carriage bolt M8 * 20 stainless steel	2
3	G010177	Flat washer Φ 8* Φ 16 * 1.5 stainless steel	6
4	G010194	Bearing 6010 2RS	2
5	G010199	a universal coupling Φ 18* Φ 32*85	1
6	G010206	Circlip A for hole	2
7	G010150	Outer hexagon M6 * 12 stainless steel	2
8	C010118	Lifting handle	2
9	C010119	Stop rocker arm	2
10	G010170	Spring washer M8 stainless steel	4
11	G010123	Pan head cross screw M5 * 12 stainless steel	3
12	A010144	Tensioning support	1
13	G010101	Nut M8 stainless steel	6
14	B010170	Steering wheel Φ two hundred and sixty-five	1
15	G010107	Self locking nut M8 stainless steel	2
16	G010125	Pan head cross screw M5 * 25 stainless steel	6
17	G010172	Flat washer Φ 5* Φ 10 * 1 stainless steel	6
18	E010148	Horn switch	1
19	G010176	Flat washer Φ 8* Φ 32 * 3 stainless steel	2
20		chain	1
21	C010106	Front wheel shaft sleeve	2
22	B010159	Bearing wheel Φ 200*60	1

23	B010156	Front wheel	1
24	A010159	Washer	1
25	C010105	Sprocket	1
26	A010158	Front wheel mounting bracket	1
27	C010107	wheel axle	1
28	G010196	Bearing PFL205/SB205	2
29		chain	1
30	C010131	Stay wire	1
31	G010152	Hexagonal M8 * 20 stainless steel	2
32	C010117	Front steering shaft	1
33	A010141	Bogie 560	1
34		Stay wire 2	1
35	E010134	Key switch (double contact)	1
36	B010108	Steering cover 560	1
37	C010105	Sprocket	1
38	C010104	Direction axis	1