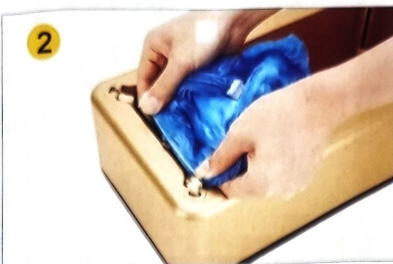


## INSTALLATION FOR SHOE COVER



1 Unfold a bundle of shoe covers, paying attention to the length of the shoe cover



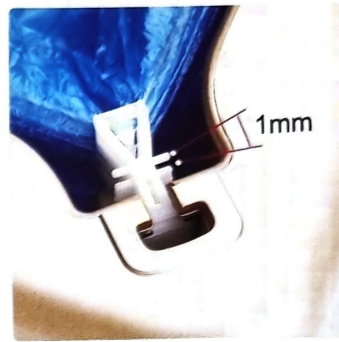
2 Squeeze the entire stack of buttons, align with the T-shaped slot at the corner of the shoe cover machine, and press the button into the slot



3 The shoe cover must be installed diagonally, and install the remaining clips in the same way as in step 2



4 After the four corners are installed, loosen the tie that is tied to the shoe cover buckle



THE DISPENSER IS SUIT  
FOR ALL KINDS OF SHOES  
CHANGING PLACES



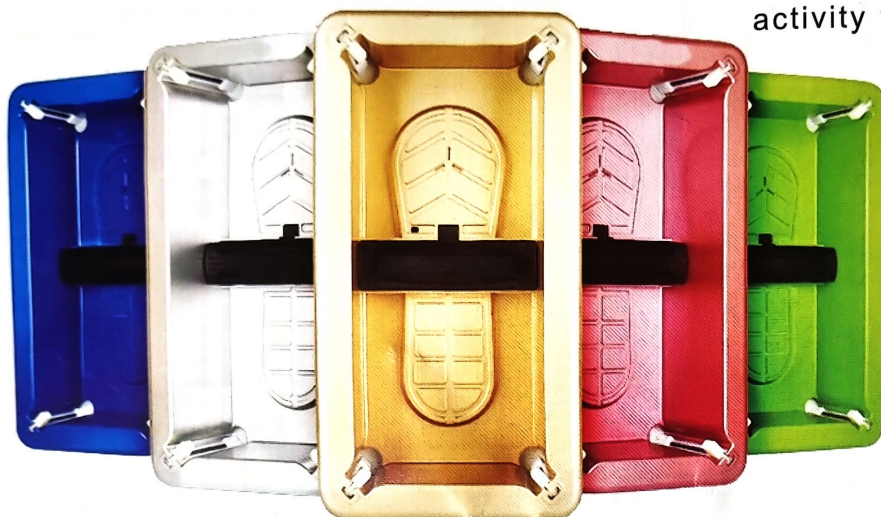


# AUTOMATIC SHOE COVER DISPENSER INSTRUCTION MANUAL

## PRODUCT INTRODUCTION

Thank you for using automatic shoe cover dispenser. Please read this manual carefully before using and keep it in right place.

Shoe cover dispenser is a rapid and safe sanitary product for the protection of hygienic environments. It can be widely used in houses, hospitals, hotels, factories, labs, clean rooms, museums, show homes, airport buses and religious activity venues.



## HOW TO USE THE DISPENSER

## ATTENTIONS



Leiyuruf foot stepped in the middle of the machine

With a little effort, one stop in the end

Shoe cover automatically put on



1. Make sure the length and width sides of shoe covers are in the right direction with dispenser.

2. When loading more shoe covers, press the top T-Clip remaining inside the T-opening and put down the new T-clips at the same time. Otherwise the new T-clips cannot be loaded and the dispenser may be broken if pressing hard.

3. Make sure that T-clips are loaded to all corners and every ribbon on the T-Clips are untied.

4. Before using the dispenser, make sure that the top T-clip is pulled out of the opening about 1mm by the rubber band. If not, pull out the top T-clip slightly.

5. When using the dispenser, step in the center part of the dispenser and press with even and one-time strength. Otherwise the shoe cover releasing will be affected.

6. If the sliding block does not work well after using for a long time, spread some lubricating oil in the sliding slot to reduce the friction force.

7. The shoe cover releasing may be affected if shoe covers are loaded long time before using. It is better to load the shoe covers just before using.

## AFTER SALES SERVICE

With fine mechanical structure, this product is not easy to breakdown. If there is any problem during using this product, please contact with the local seller.