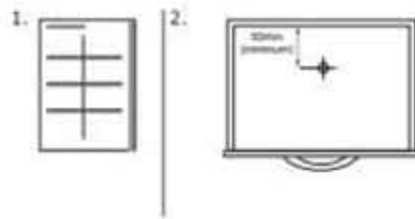


## INSTALLATION (INTO DRAWER)



1. Follow 'Wall-Mounted' instruction number 1 to 6. Substituting the drawer base for the wall.
2. Ensure the initial screw hole for the bracket is drilled at least 50mm from the back of the drawer to allow the unit to be hooked in place.

## CAUTION

- ▶ This appliance is not intended for use by persons (including children) with reduced physical, sensory or mental capabilities, or lack of experience and knowledge, unless they have been given supervision or instruction concerning use of the appliance by a person responsible for their safety.
- ▶ The hair dryer is fitted with an automatic overheating protection device. In the event of the unit overheating the hair dryer will switch off. Unplug the unit from the mains and allow to cool.
- ▶ Never use the product near any source of water such as wash basins, baths, sinks etc.
- ▶ Never immerse the product in any water or other liquids.
- ▶ Never use the product with wet hands.
- ▶ Never insert foreign objects into the air inlet or outlet.



## WARNING

- ▶ Do not operate the appliance with a broken cord or plug, or if the appliance malfunctions, or is dropped or damaged in anyway.
- ▶ If the supply cord is damaged, it must be replaced by the manufacturer or its service agent or a similarly qualified person in order to avoid a hazard.
- ▶ Do not let the cord hang over the edge of the work surface or let it touch any hot surfaces.
- ▶ The use of attachments that are not supplied by the manufacturer may cause fire, electric shock or injury and damage to the appliance.

## GENERAL MAINTENANCE

- ▶ Always unplug the hair dryer before cleaning.
- ▶ Use a slightly damp cloth to clean the body of the hair dryer, and dry with a clean cloth.
- ▶ Store the appliance in a drawer away from dust or moisture if do not use the appliance in a long time.

## GUARANTEE

- ▶ This product is guaranteed against defects in material and workmanship for a period of one year from the date of original purchase.
- ▶ If this hair dryer become defective during the guarantee period, return it to the store of purchase together with your proof of purchase for repair or replacement.
- ▶ The guarantee become invalid in the case of misuse, alteration or repair by unauthorised persons.
- ▶ If your hair dryer occurs a problem outside of the warranty period, we offer a pay-for-service where we can collect and professionally repair your hair dryer.

## WALL MOUNTED HAIR DRYER



## Operation Instruction

### Dear Customer

Thank you for your purchase. We are sure you will enjoy using our hair dryer. Please read the safety instructions before using this hair dryer. Protect yourself and others by observing all safety information. Retain instructions for future reference.

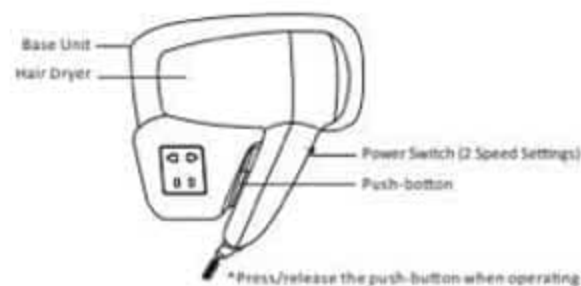
This manual provides instructions for models with and without a shaver socket.

## TECHNICAL DATA

Rated Voltage: 220-240V   
 Rated Frequency: 50/ 60 Hz  
 Rated Power: 1300W

Rated Voltage: 110-120V   
 Rated Frequency: 50/ 60 Hz  
 Rated Power: 1100W

## PARTS IDENTIFICATION



### Fixing Pack

3 x Install Screw



3 x Wall Plug



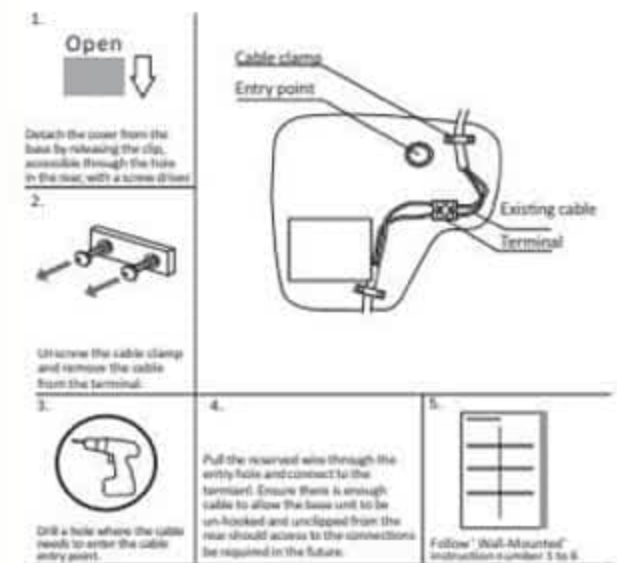
3 x Cap



## INSTALLATION (WALL-MOUNTED)



## INSTALLATION (WITH RESERVED WIRE)



## ELECTRICAL INSTALLATION

