



CLIMB ON



## TYPE IA 300LBS RATED

### USER INSTRUCTIONS

Congratulations on your purchase the Little Giant Select Step®. These instructions will help you make the most of your Little Giant Select Step by learning how to use it safely. **Please do not ignore** the instructions, **study them!** If you have questions about how to operate your ladder system, please search our safety resources at [www.LittleGiantLadders.com/SafetyToolbox](http://www.LittleGiantLadders.com/SafetyToolbox), or call us before using your ladder system. Your safety and satisfaction is most important to us.

To learn more about accessory options, please call our customer experience team.

Welcome to the Little Giant Family!



Little Giant Ladders



@RealLittleGiant



LittleGiantLadderSystems



LittleGiantLadderSystems

Customer Care: 800-453-1192 or 801-489-3684 • Monday - Friday, 7am - 5pm MST  
Little Giant Ladder Systems • 1198 North Spring Creek Place • Springville, UT 84663 • USA  
[www.LittleGiantLadders.com](http://www.LittleGiantLadders.com)

### GETTING TO KNOW YOUR LADDER

Your Little Giant Select Step® is a multi-use ladder system made up of two major components: one inner ladder assembly and one outer ladder assembly that telescopes over the inner section. The inner and outer assemblies work together with the Rock Locks to adjust the ladder into different lengths and positions, including:

1. A-Frame stepladder
2. 90-degree (only used against a secure wall, never in front of a door)
3. Staircase



©2015 Little Giant Ladder Systems 52993 v9 8.16

## GENERAL OPERATING SAFETY TIPS

### Select Step Operating Safety Tips

1. Make sure you support the inner ladder assembly with one hand while releasing each Rock Lock, and the outer ladder assembly when using the twist handle. Failure to do so may result in injury.
2. Make sure each of the two Rock Locks are fully engaged in the appropriate rung tube before climbing the ladder.
3. The 90-Degree position must only be used when the back of the ladder is against a secure wall.
4. Keep your hands and loose clothing away from the moving parts of the ladder.
5. To avoid pinching, place your hands on the top cap or the upper vertical rails when telescoping your ladder up or down.
6. Warning: Metal conducts electricity. Do not let ladders of any material come in contact with live electrical circuits.
7. Keep all ladder rungs, ladder feet, work steps, and other standing and gripping surfaces clean and free from foreign materials.
8. The Select Step has a Type IA ANSI duty rating of 300 lbs. For your safety, do not exceed the weight limit.
9. The AirDeck® is rated to hold 25 pounds of tools and materials. For your safety, do not exceed this weight limit.
10. Do not use the ladder without outer flared section attached.

### General Ladder Safety Tips

1. Select the correct ladder for your job—a ladder that is both rated for your weight and designed for the appropriate height and type of work you're doing.

2. Do a basic safety check before you get on any ladder. Look it over and make sure that rivets and welds are tight and in good condition, that the rails are in place, and that the ladder doesn't wobble unsafely. Check the feet of the ladder to make sure there's no build up of dirt, oil, or other material that would create an uneven surface.
3. Face forward and climb one rung at a time while going up or down a ladder.
4. Do not stand on the top cap or above the Comfort Step.
5. When on a ladder, don't lean or reach too far to one side. A good rule of thumb is to always keep your belt buckle between the side rails. It's better to be safe and come down from the ladder and move it closer to your desired work area than to reach out too far and cause the ladder to fall.



ALI MEMBER

For additional safety training visit [www.laddersafety.org](http://www.laddersafety.org)

SCAN THE CODE TO VIEW INSTRUCTION AND SAFETY VIDEO

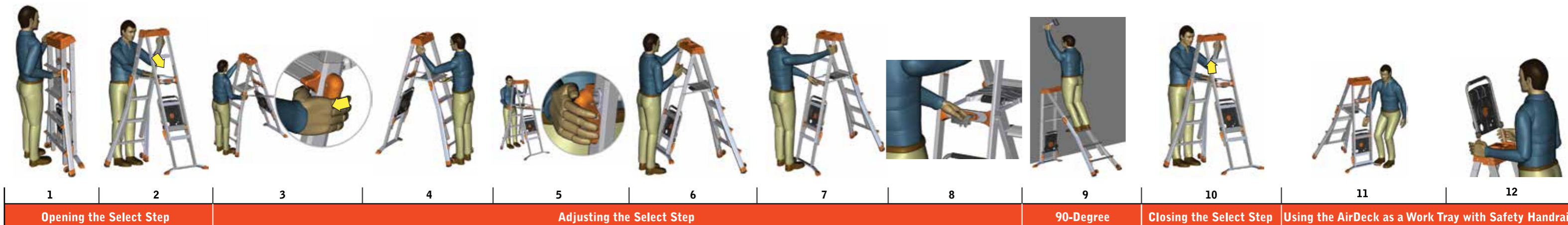


FREE QR READER DOWNLOAD AT YOUR APP STORE

MODEL	4'-6"	5'-8"	6'-10"
STEPLADDER SIZE	4'-6"	5'-8"	6'-10"
HIGHEST STANDING LEVEL	1'-10" TO 3'-9"	2'-10" TO 5'-8"	3'-9" TO 7'-7"

### Warranty

The Select Step ladder is offered with a limited lifetime warranty against manufacturer defects. Please register your product by going online to [www.LittleGiantLadders.com/registration](http://www.LittleGiantLadders.com/registration) or by completely filling out the warranty card and mailing it in.



This quick start guide shows you how to use each feature of the Select Step safely and easily. Please read the entire instruction manual to get the most out of your ladder.

### Select Step Operating Instructions

#### Opening the Select Step

1. Rest the ladder's weight on its front legs. (see Figure 1)
2. To open the legs of the ladder, grip the Comfort Step and push it forward until it is secure. (see Figure 2)

#### Adjusting the Height

1. Unlock both Rock Locks while supporting the inner section with one hand. (see Figure 3)
2. Raise the inner ladder assembly to the desired height. (see Figure 4)
3. Align and engage both Rock Locks in the rung tubes. (see Figure 5)
4. Turn the twist handle to unlock the rear legs of the ladder. (see Figure 6)
5. Telescope the back legs down to meet the height of the front legs. (see Figure 7)
6. Release the twist handle to lock the rear legs in place. (see Figure 8)

#### Adjusting for Uneven Surfaces, Staircase, and 90-Degree

1. Unlock both Rock Locks while supporting the inner section with one hand. (see Figure 3)
2. Raise the inner ladder assembly to the desired height. (see Figure 4)

#### Need Help?

Visit [www.LittleGiantLadders.com](http://www.LittleGiantLadders.com) or call Customer Care at 800-453-1192.

The AirDeck is designed to work with several Little Giant Ladder Systems products. Please visit [www.LittleGiantLadders.com](http://www.LittleGiantLadders.com) for information or to view instructional videos.

3. Align and engage both Rock Locks in the rung tubes. (see Figure 5)
4. Turn the twist handle to unlock the rear legs. (see Figure 6)
5. Telescope the back legs up or down until they reach the desired height. (see Figure 7)
6. Release the twist handle to lock the rear legs in place. (see Figure 8)
7. The 90-degree position is intended to bring the user of the ladder closer to a work surface, without reaching to the side. The 90-degree position (where one side is 1 rung shorter than the other and the ladder is placed on a level flat surface) must be used only when the back of the ladder is against a secure wall. (see Figure 9) Do not stand on or above the Comfort Step in the 90-degree position. The AirDeck is not intended for use in the 90-degree position.

#### Closing the Select Step

1. Rest the ladder's weight on its front legs. Be sure to place your hands as shown in the illustration. (see Figure 1)
2. Grip the Comfort Step and pull it toward you until the ladder is fully closed. (see Figure 10)

#### Using the AirDeck as a Safety Handrail

1. Remove the AirDeck from storage position. (see Figure 11)
2. With the bottom side of the tray facing you, insert the two posts into the vertical holes in the top cap until the handrail locks engage. (see Figure 12)
3. While standing on the Select Step, use the safety handrail to help keep your balance. (see Figure 14)

#### Using the AirDeck Safety Handrail and Tool Tray in the Vertical Position

1. Remove the AirDeck from storage position. (see Figure 11)
2. Stand securely on the ladder and with the bottom side of the tray facing you, insert the two posts into the vertical holes in the top cap until the handrail locks engage. (see Figure 12 & 13)
3. Raise the lower portion of the tool tray to the open position until it locks into place. (see Figure 15)

#### Storing the AirDeck

1. Push buttons on both sides to release the locks. (see Figure 16)
2. Allow the tool tray to rotate down into the closed position. (see Figure 17)
3. Release the orange handrail locks and pull the rail posts out of the top cap. (see Figure 18)
4. Hang the AirDeck on the bar located on the inside of the Select Step's back legs. (see Figure 19)

#### Using the AirDeck Tool Tray in the Horizontal Position

1. Remove the AirDeck from storage position. (see Figure 19)
2. Insert the two posts into the horizontal holes in the top cap until the handrail locks engage. (see Figure 20)

