



Control Stations

Reliable made affordable





About Himel

Himel is a multinational manufacturer and provider of electrical products successfully combining global expertise with local knowledge.

Founded by a Spanish entrepreneur in 1958, the company pioneered in exporting quality electrical enclosures, establishing Himel brand globally. Today, our global footprint and technology enable us to provide the best combination of affordable and reliable offers for Low Voltage Power distribution, Industry Automation and Home Electric to our long-term customers and partners in over 50 countries where we are present.

Himel. Reliable made affordable





HLAY5CS Control Stations



HLAY5CS is Himel's range of Control Stations, designed for auxiliary or direct control of industrial machinery and processes.

The HLAY5CS control stations are available in plastic and come in a wide variety of composition and cut-outs. These can be used with HLAY5 range Ø 22 mm control and signaling units, providing a wide choice of circular heads.



One-Brand Solution

The use of Himel control stations and pushbuttons simplifies your operation mechanism choices.

Optimized Flexibility

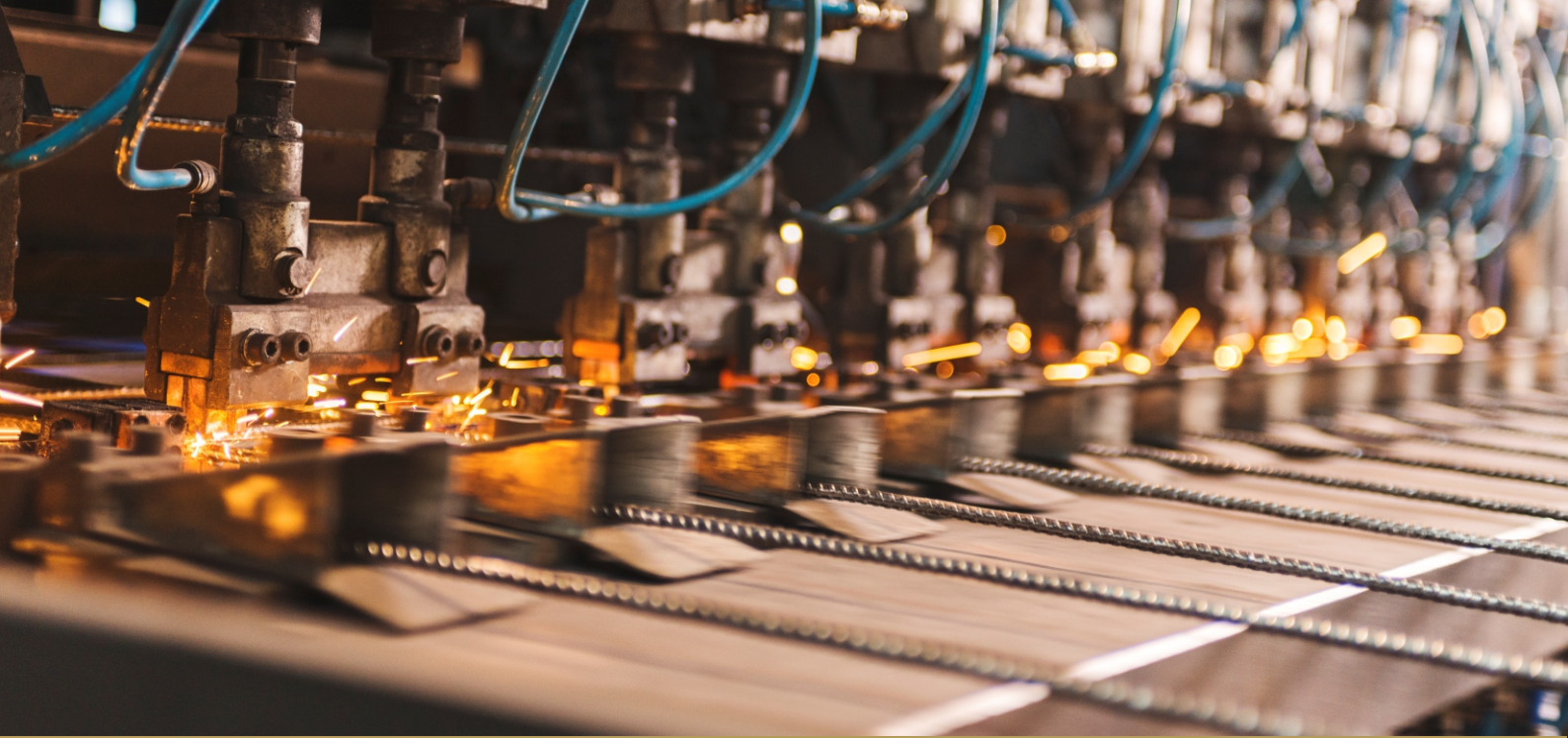
- Empty control stations and pushbuttons are easily available to assemble as per customer convenience.
- Complete control stations with ready-to-use buttons



Wide Offer Portfolio

Comprehensive range of pushbuttons and accessories for most of the common operation actions.





Target Applications

HLAY5CS control stations are the perfect choice for:

- Industrial: Machine tools, packaging, materials handling, and textile;
- Building: Garage doors, rolling shutters, and smoke extraction vents;
- Infrastructure: Constructions.

...



Industrial



Building



Infrastructure



Industrial Control & Protection

HLAY5CS Control Stations

Standard: IEC 60947-5-1



Range presentation

HLAY5CS is Himel's range of Control Stations, designed for auxiliary or direct control of industrial machinery and processes.

Technical Parameters

Main

Associated control and signaling units	Ø 22 control and signaling units
Number of cut-outs	1, 2, 3, 4 or 5
Material	ABS
Lid colour	White or yellow
Degree of protection	IP40 (IP54 with protective cover)
Function	According to equipment fitted: <ul style="list-style-type: none"> ▫ Start or Stop ▫ Start-Stop with pilot light ▫ Motion control ▫ Emergency stop
Knockout diameter	M20(PG13.5)

Complementary

Rated insulation voltage (Ui)	660V
Rated conventional thermal current (Ith)	6A
Rated voltage (Ue)	220V/380V
Rated current (Ie)	AC-15 1.3A/3A
	DC-13 0.27A/0.55A

Environment

Ambient air temperature for storage	-25 to +70°C
Ambient air temperature for operation	-25 to +70°C
Conformity to standards	IEC60947-5-1



Selection Code

Series Name	Range Name	Enclosure Material	Number of Cut-outs	Color of Enclosure Cover	Pushbutton Material	Empty Enclosures/ Complete Stations (Pushbutton Code)
HLAY5	CS	P	1	1	B	A
CS: Control Station	P: Plastic	1: 1-hole 2: 2-hole 3: 3-hole 4: 4-hole 5: 5-hole	1: White 5: Yellow	B: Metal E: Plastic	Default: Empty enclosures A: Flush S: Emergency stop pushbuttons, turn to release	

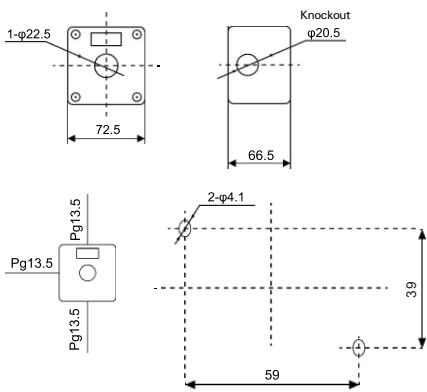
HLAY5CS Control Stations

Standard: IEC 60947-5-1

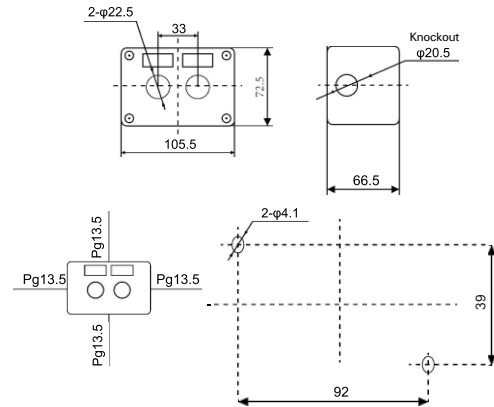
Overall Dimensions

Unit: mm

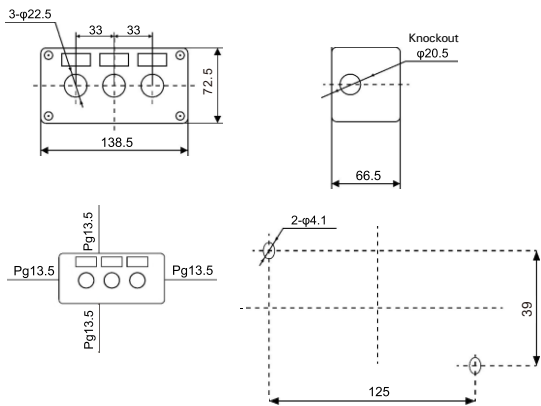
HLAY5CSP1- 1 hole



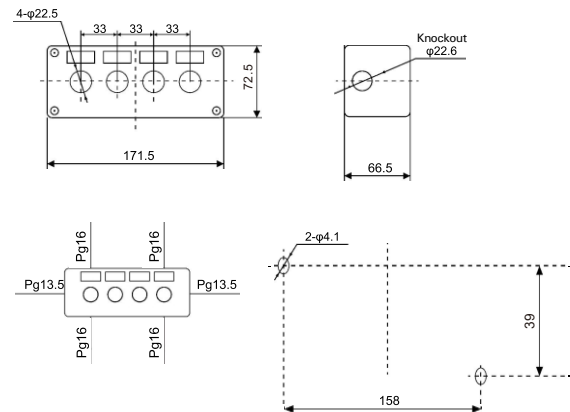
HLAY5CSP2- 2 holes



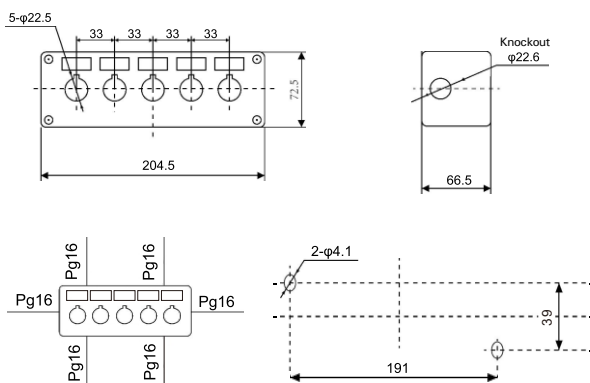
HLAY5CSP3- 3 holes

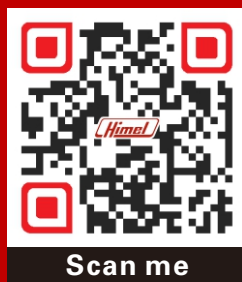


HLAY5CSP4- 4 holes



HLAY5CSP5- 5 holes





Himel
www.himel.com

Jul 2020



©2020 HIMEL