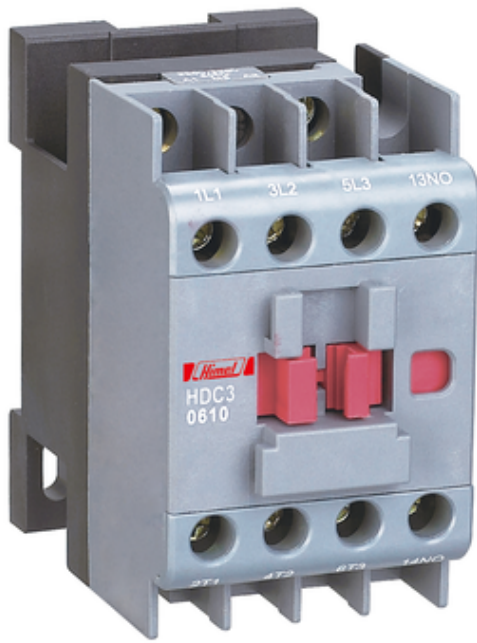


Product data sheet

HDC30610M7

Characteristics

Contactor, HDC3-0610, 220/230 V, 50/60 Hz



Main

Range of product	HDC3
Product or component type	Contactor
Contactor application	Non-reversing
Poles description	3P
[Ith] conventional free air thermal current	25 A

Complementary

Utilisation category	AC-3 AC-4
[In] rated current	6 A
[Uc] control circuit voltage	220/230 V AC 50/60 Hz
Auxiliary contact composition	1 NO
[Ui] rated insulation voltage	690 V
[Ie] rated operational current	6 A at 380/400 V AC-3 3.8 A at 660/690 V AC-3 2.6 A at 380/400 V AC-4 1 A at 660/690 V AC-4
Motor power kW	2.2 kW at 380/400 V AC-3 3 kW at 660/690 V AC-3 1.1 kW at 380/400 V AC-4 0.75 kW at 660/690 V AC-4

Environment

Installation category	III
Pollution degree	3
Ambient air temperature for operation	-5...40 °C
Average ambient air temperature for operation	= 35 °C (average over 24 hours)
Ambient air temperature for storage	-25...55 °C
Operating altitude	2000 m
Standards	IEC 60947-4-1
Product certifications	CB CE SEMKO
IP degree of protection	IP20
Relative humidity	0...50 % at 0...40 °C 0...90 % at 0...20 °C

Packing Units

Unit Type of Package 1

PCE

Number of Units in Package 1

1
