



HIGH CORROSION RESISTANT VALVES (316L STAINLESS STEEL)



2/2

Actuation	Body	Function	Port Size	Orifice (mm)	Flow Factor Kv(l/min)	MOPD (bar)	Max Fluid Temp. (°C)	Page Parker Valves	Page Parker LUCIFER® Valves
Direct Operated	316L Stainless St./Pipe Mounting	Normally Closed	1/4"	1.5 to 3.5	2.3	20	140	166	-
			1/8"	1.5 to 2.5	2.3	20	140	166	-
			1/2"	5 to 6.2	13	4	140	168	-
			3/8"	5 to 6.2	13	4	140	168	-
			1/4"	1	0.6	98	75	-	170
Magnalift	316L Stainless St./Pipe Mounting	Normally Closed	1/2"	15	50	10	140	172	-
			3/4"	24	95	10	140	172	-
			3/8"	15	40	10	140	172	-
			1"	24	105	10	140	174	-

High corrosion-resistant valves (Stainless Steel)

2/2

Applications

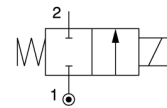
The valves in this section are made of corrosion-resistant material internally and externally. Please refer to the fluid compatibility chart in this catalogue for detailed fluid compatibility.



Direct operated

Port size	Orifice (mm)	Flow factors (L/min)			Admissible differential pressure bar			Fluid temp. °C			Seat disc	Reference numbers				Power consumption (W)		Wt. (g)	El. Part Group *	Dim ref.
		Liquids kv	Qmax	Gases Qn	Min	Max		Gas	Liquid	Oil		Global valve reference	Valve reference no.	Housing	Coil	DC	AC			

Normally closed



303 Stainless steel body/Pipe mounting

1/4	1.5	1.5	12.5	80	0	20	20	100	100	100	FKM	7121VVG2GV00	121V5406	2995	481865	9	8	410	2	6
	1.5	1.5	12.5	80	0	20	20	120	120	120	FKM			4270	481000	8	8	530	2	
1/4	1.5	1.5	15	80	0	25	60	-	100	-	Ruby	7121VVG2GR00	121V5463	2995	481865	9	8	410	2	6
	1.5	1.5	15	80	0	30	75	-	130	-	Ruby			4270	481000	8	8	530	2	
	1.5	1.5	15	80	0	55	100	-	140	-	Ruby			4270	486265	14	14	540		
1/4	2.5	3.5	8.5	220	0	7	14	100	100	100	FKM	7121VVG2LV00	121V5706	2995	481865	9	8	410	2	6
	2.5	3.5	8.5	220	0	9	14	120	120	120	FKM			4270	481000	8	8	530	2	
	2.5	3.5	8.5	220	0	14	14	120	120	120	FKM			4270	486265	14	14	540		
1/4	2.5	3.5	25	220	0	10	28	-	100	-	Ruby	7121VVG2LR00	121V5763	2995	481865	9	8	410	2	6
	2.5	3.5	25	220	0	12	34	-	130	-	Ruby			4270	481000	8	8	530	2	
	2.5	3.5	25	220	0	22	50	-	140	-	Ruby			4270	486265	14	14	540		
1/4	3	4.5	9	315	0	8.5	10	75	75	75	FKM	7121VVG2NV1D	121V53061D	-	483250	8	8	1375	5	6773
	3	4.5	27	315	0	7	10	100	100	100	FKM	7121VVG2NV00	121V5306	2995	481865	9	8	410	2	6
	3	4.5	27	315	0	8.5	10	120	120	120	FKM			4270	481000	8	8	530	2	
3	4.5	27	315	0	10	10	120	120	120	FKM	4270			486265	14	14	530			
1/4	3	4.5	27	315	0	7	20	-	100	-	Ruby	7121VVG2NR00	121V5363	2995	481865	9	8	410	2	6
	3	4.5	27	315	0	8.5	25	-	130	-	Ruby			4270	481000	8	8	530	2	
	3	4.5	27	315	0	15	36	-	140	-	Ruby			4270	486265	14	14	540		
1/4	4	7	10.5	450	0	4	10	100	100	100	FKM	7121VVG2QV00	121V5206	2995	481865	9	8	410	2	6
	4	7	10.5	450	0	5	10	120	120	120	FKM			4270	481000	8	8	530	2	
	4	7	10.5	450	0	10	-	120	120	120	FKM			4270	486265	14	-	540		
1/4	4	7	35	450	0	4	12	-	100	-	Ruby	7121VVG2QR00	121V5263	2995	481865	9	8	410	2	6
	4	7	35	450	0	5	15	-	130	-	Ruby			4270	481000	8	8	530	2	
	4	7	35	450	0	10	22	-	130	-	Ruby			4270	486265	14	14	540		
1/4	4	7	35	450	0	3.5	3.5	-	-	100	PTFE	7121VVG2QT00	121V5212	2995	481865	9	8	410	2	6
	4	7	35	450	0	3.5	3.5	-	-	130	PTFE			4270	481000	8	8	530	2	

High corrosion-resistant valves (Stainless Steel) 2/2 - Direct operated

