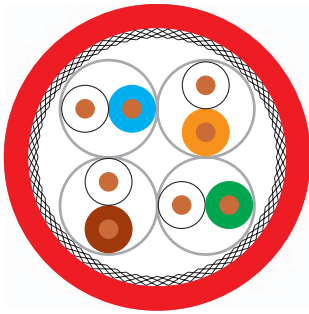


LAN Cable

Category 6

HELUKAT®300
S/FTP

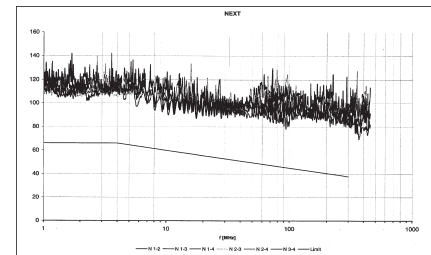


Cable structure

Conductor material:
Core insulation:
Core colours:
Separator:
Screen over stranding element:
Screen 1 over stranding:
Screen 2 over stranding:
Outer sheath material:
Outer diameter:
Outer sheath colour:

S/FTP 4x2xAWG 24/1 FRNC

Copper, bare
Foam-skin-PE
wh/bu, wh/og, wh/gn, wh/bn
-
Alu-Foil
Cu braid
-
FRNC
approx. 7,0 mm
red, similar to RAL 3000



Electrical data

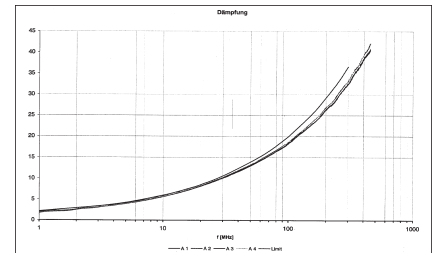
Characteristic impedance: 100 Ohm ± 15 ohm at 1 to 100 MHz
100 Ohm ± 20 ohm at 101 to 500 MHz
Loop resistance: 165 Ohm/km max.
Mutual capacitance: 43 nF/km nom.
Rel. propagation velocity: 79 %

Typical values

Frequency (MHz)	10	16	62,5	100	250	500
Attenuation (dB/100m)	5,3	6,8	13,6	17,3	27,7	41,9
Next (dB)	> 100	> 100	97	95	90	83,0
ACR (dB/100m)	94,7	93,2	83,4	77,7	62,3	41,1

Technical data

Weight: approx. 53 kg/km
bending radius, repeated: 60 mm
Operating temperature range min.: -20°C
Operating temperature range max.: +60°C
Caloric load, approx. value: 0,50 MJ/m
Copper weight: 23,00 kg/km



Norms

Acc. to ISO/IEC 11801, Acc. to EN 50173, Acc. to EIA/TIA 568-A, Category 6, Flame-retardant acc. to IEC 60332-3, Smoke density acc. to IEC 61034, Halogen-free acc. to 60754-2, Corrosiveness acc. to EN50267-2-3.

Anwendung

HELUKAT®300 data cables are used in the tertiary, but also in the secondary level of a network. They are characterized by large performance reserves and outstanding performance. They can be used to implement services such as Gigabit Ethernet, Fast Ethernet, Ethernet, TM155, FDDI, token ring 4/16 Mbit/s, or ISDN absolutely trouble-free. Likewise, the mechanical characteristics are perfectly suited for the application in tight cable channels and platforms due to their optimized construction.

Part no.

805640, S/FTP 4x2xAWG24/1 FRNC (S-STP)

Dimensions and specifications may be changed without prior notice.